

CSMFO Chapters
November - December 2022

A California Local Government Finance Update

Michael Coleman

coleman@muniwest.com

530.219.3691

CaliforniaCityFinance.com

The California Local Government Finance Almanac

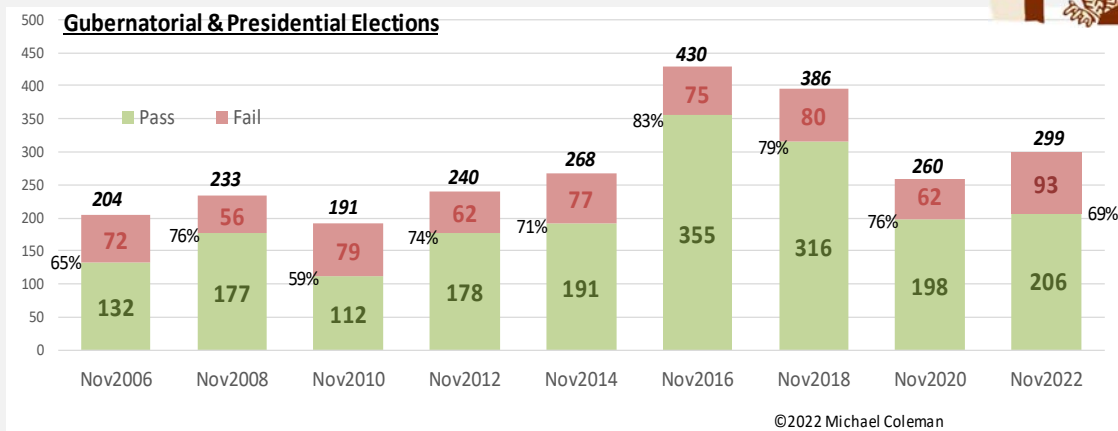


California Propositions November 2022

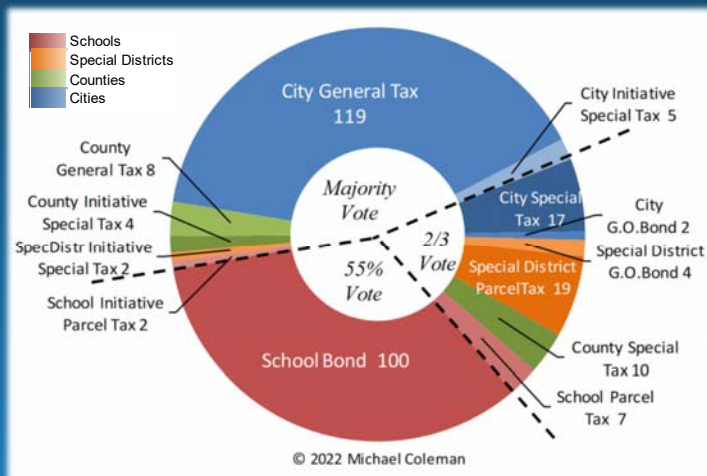
- ✓ **Prop 1.** Constitutional right to Reproductive Freedom.
- ✗ **Prop 26.** Sports Betting on tribal lands (Tribes).
- ✗ **Prop 27.** On-line Sports Betting (Apps). Dedicates licensing revenue to homeless and mental health services and tribal economic development
- ✓ **Prop 28.** Required minimum funding for music, arts education.
- ✗ **Prop 29.** Kidney Dialysis Clinics. (Reprise of Prop 8 in 2018 and Prop 23 in 2020)
- ✗ **Prop 30.** Tax for EVs and Wildfire Prevention. Increases personal income tax on income over \$2 million. Dedicates license revenue to EV and wildfire programs
- ✓ **Prop 31.** Flavored Tobacco Sales. Upholds the ban.



Local Tax & Bond Measures

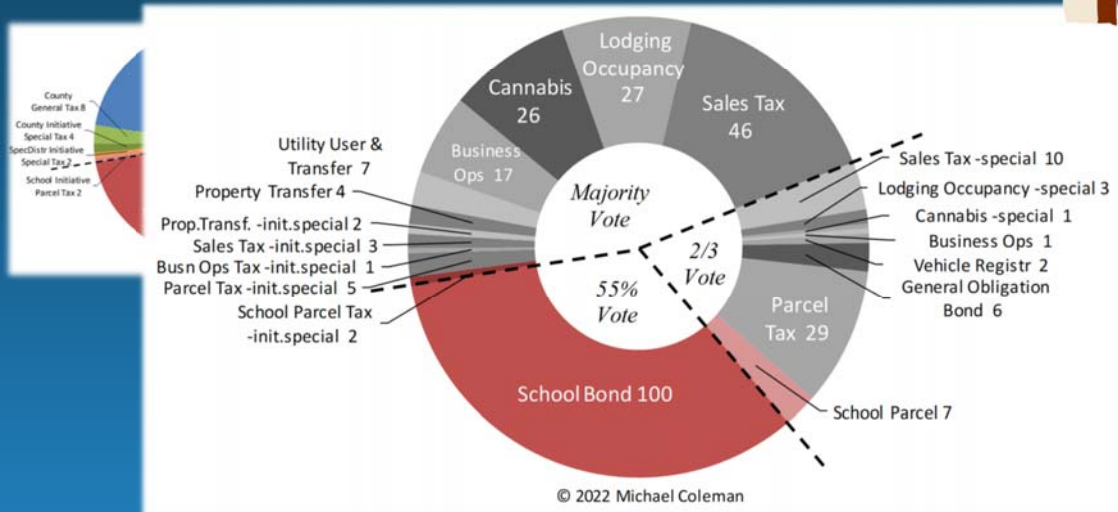


Local Tax & Bond Measures November 2022



- ✓ 299 tax and bond measures (plus 170 others: land use, term limits, appoint clerk/treasurer, etc.)
- ✓ 143 city, 22 county, 25 special district, 109 school
- ✓ 13 Special Taxes by initiative

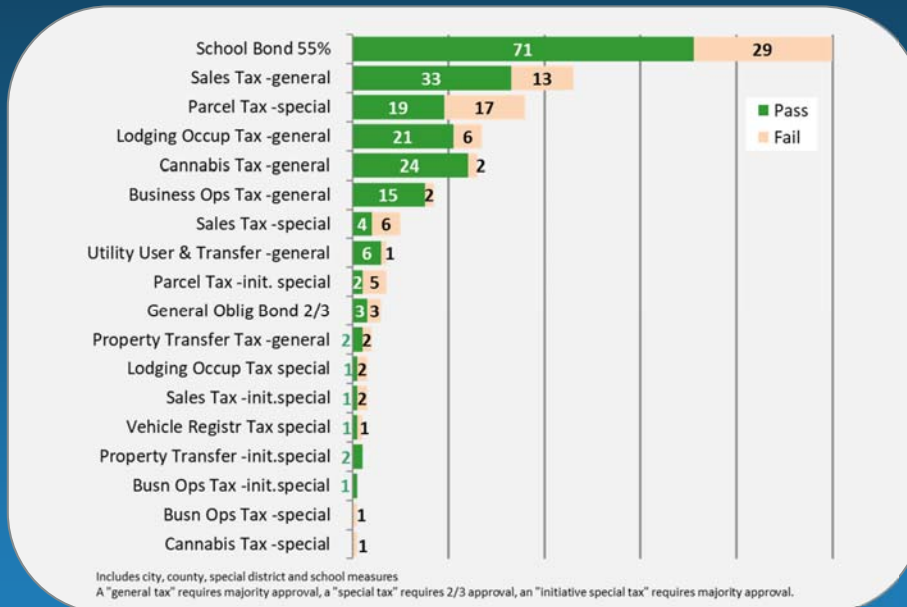
Local Tax & Bond Measures November 2022



CaliforniaCityFinance.com

November 2022

Local Tax & Bond Measures Nov. 2022



CaliforniaCityFinance.com

November 2022

California State Budget 2022

- ❖ \$308 billion budget
 - including a \$234 billion General Fund
- ❖ General Fund reserves will grow to \$38 billion
- ❖ Substantial increases to education, health & human services
- ❖ Refunds to most California taxpayers
- ❖ Gann Appropriations Limit



California State Budget 2022

\$12 billion tax relief

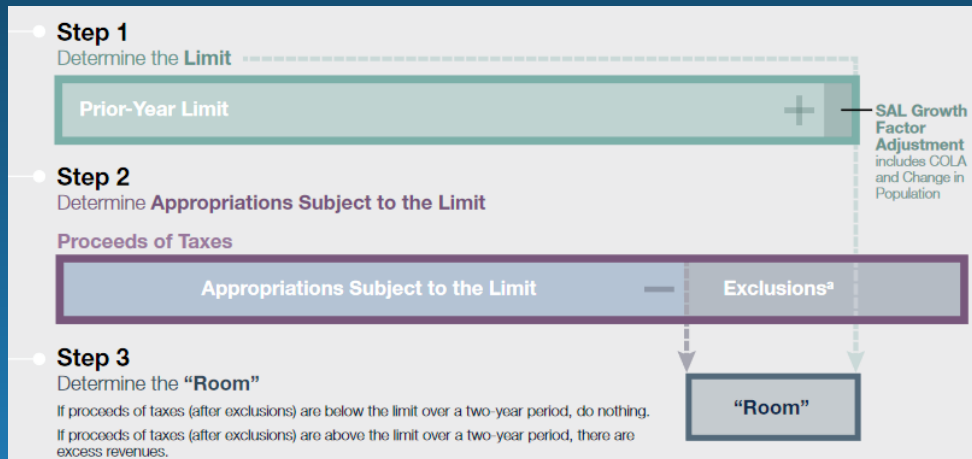
- ✓ Tax Rebates. Taxpayer, spouse and up to one dependent.
 - \$350 for filers with incomes below \$75,000;
 - \$250 for filers with incomes between \$75,000 and \$125,000;
 - \$200 for filers with incomes between \$125,000 and \$250,000.
- ✓ Supplemental Social Security Grants to reach non-filers.
 - \$39/month for individuals, \$100 for couples.
- ✓ Expand access to Young Child Tax Credit and new Foster Youth Tax Credit.
- ✓ CalWORKs increase



For more details see: **Alexei Koseff** in CalMatters



The Article XIIIIB “Gann” Appropriations Limit



More on your Gann Limit: CaliforniaCityFinance.com or
“The California Municipal Revenue Sources Handbook” Chapter 10

CaliforniaCityFinance.com

November 2022



California State Budget 2022

Article XIIIIB “Gann” Appropriations Limit

- ✓ Allocations to excluded purposes:
 - Infrastructure (“qualified capital outlay”)
 - tax refunds
 - emergency response
- ✓ Changed state law re “*subventions*” so that more state funding to locals is to be calculated under local Limits, not the state’s ...
effective for FY 2021-22 on.
 - ❖ *Locals will need to recalculate FY2021-22, FY2022-23.*

CaliforniaCityFinance.com

November 2022



Local Streets and Roads Revenues



CaliforniaCityFinance.com

Local Streets and Roads Revenues



Local \$ to
HUTA

Str&Hwy2103
Previously price-based
Gasoline Excise Tax
reset to @17.3¢ on 7/1/19

Now 19.7 ¢

inflation adjusted
annually July 1

Str&Hwy2104-2108
Base rate
**Gasoline
Excise Tax** 18¢

Now 20.5 ¢

inflation adjusted
annually July 1

Local \$ to
**RMRA &
grants**

**Gasoline
Excise Tax +12¢**

Now 13.7 ¢

inflation adjusted
annually July 1

**Transportation
Improvement Fee**
\$25 to \$175/year
depending on auto value

Now \$28-196

inflation adjusted
annually January 1

**Diesel
Excise Tax**
+20¢/gal

Now 25.1 ¢

inflation adjusted
annually July 1

ZEV Registration Fee
inflation adjusted
annually July 1
\$100/yr on 2020 models / later

CaliforniaCityFinance.com

November 2022



California Fuel Taxes



California Gasoline Excise Tax Rates - Per Gallon				
Effective Date	Base Rate	Sec2103	SB1 Rate	Total
July 1, 2010	\$ 0.180	\$ 0.173		\$ 0.353
July 1, 2011	\$ 0.180	\$ 0.177		\$ 0.357
July 1, 2012	\$ 0.180	\$ 0.180		\$ 0.360
July 1, 2013	\$ 0.180	\$ 0.215		\$ 0.395
July 1, 2014	\$ 0.180	\$ 0.180		\$ 0.360
July 1, 2015	\$ 0.180	\$ 0.120		\$ 0.300
July 1, 2016	\$ 0.180	\$ 0.098		\$ 0.278
July 1, 2017	\$ 0.180	\$ 0.117		\$ 0.297
Nov 1, 2017*	\$ 0.180	\$ 0.117	\$ 0.120	\$ 0.417
July 1, 2019	\$ 0.180	\$ 0.173	\$ 0.120	\$ 0.473
July 1, 2020	\$ 0.192	\$ 0.185	\$ 0.128	\$ 0.505
July 1, 2021	\$ 0.194	\$ 0.187	\$ 0.130	\$ 0.511
July 1, 2022	\$ 0.205	\$ 0.197	\$ 0.137	\$ 0.539

CaliforniaCityFinance.com

November 2022



California Fuel Taxes



Calif. Gas Excise Tax per gallon		Calif. Diesel Excise Tax per gallon	
Effective Date	Total	Effective Date	Total
July 1, 2017	\$ 0.297	July 1, 2017	\$ 0.160
Nov 1, 2017*	\$ 0.417	Nov 1, 2017*	\$ 0.360
July 1, 2019	\$ 0.473	July 1, 2019	\$ 0.360
July 1, 2020	\$ 0.505	July 1, 2020	\$ 0.385
July 1, 2021	\$ 0.511	July 1, 2021	\$ 0.389
July 1, 2022	\$ 0.539	July 1, 2022	\$ 0.411

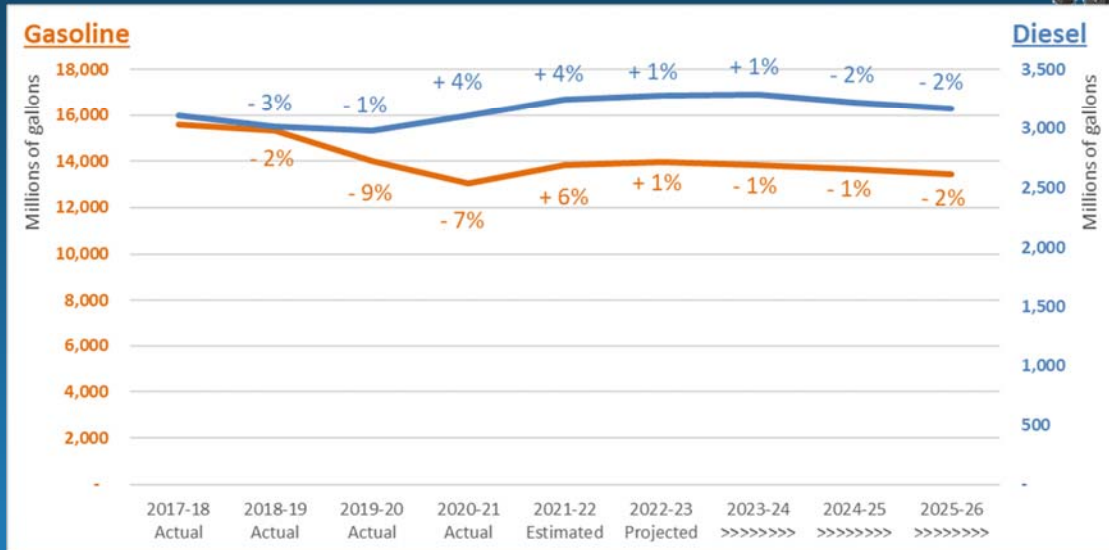
Vehicle Registration Tax (Transportation Improvement Fee)				
Vehicle Value	Jan 2018	Jan 2020	Jan 2021	Jan 2022
0 - \$4,999	\$ 25	\$ 27	\$ 27	\$ 28
\$5,000 - \$24,999	\$ 52	\$ 54	\$ 55	\$ 56
\$25,000 - \$34,999	\$ 105	\$ 107	\$ 110	\$ 112
\$35,000 - \$59,999	\$ 157	\$ 161	\$ 165	\$ 168
\$60,000 & over	\$ 183	\$ 188	\$ 192	\$ 196

CaliforniaCityFinance.com

November 2022



Fuel Consumption



Local Streets and Roads \$ to Cities and Counties

