

Shared Revenue Estimates: State Revenue Allocations to Cities and Counties
Local Streets and Roads Estimates: 2020-21, 2021-22
Including Highway Users Tax Account (HUTA) and
Road Maintenance and Rehabilitation Account (RMRA)

The state of California imposes per-gallon excise taxes on gasoline and diesel fuel, sales taxes on gasoline and diesel fuel and registration taxes on motor vehicles with allocations dedicated to transportation purposes.¹ The local (city and county) portions of these allocations flow through the Highway Users Tax Account (HUTA), the familiar gasoline tax revenues that have been in place for decades, and the Road Maintenance and Rehabilitation Account (RMRA) which allocates much of the revenue from the Road Repair and Accountability Act of 2017 (SB1 Beall).

State taxes transferred to and allocated through the state Highway Users Tax Account (HUTA) include:

- The per gallon “gasoline tax” and “diesel fuel tax” imposed on the use of vehicle fuels.
- The “use fuel tax,” imposed on vendors and users of motor vehicle fuels that are not taxed under either the gasoline or diesel fuel tax, such as liquefied petroleum gas, ethanol, methanol and natural gas (both liquid and gaseous) for use on state highways. Use Fuel Tax rates vary depending on the type of fuel.
- Variable rate per gallon gasoline diesel fuel excise taxes imposed in 2010-11 in a complicated arrangement known as the “fuel tax swap.” This rate replaced the previous Proposition 42 sales tax on gasoline.

Transportation taxes allocated to cities and counties through the Road Maintenance and Rehabilitation Account (RMRA) established by the Road Repair and Accountability Act of 2017 (SB1 Beall) include:

- An additional 12 cent per gallon increase to the gasoline excise tax effective November 1, 2017 with annual inflation adjustments beginning July 1, 2020.
- An additional 20 cent per gallon increase to the diesel fuel excise tax effective November 1, 2017 with half of the revenues going to the state Trade Corridor Enhancement Account (TCEA) and half to the RMRA. Annual inflation adjustments beginning July 1, 2020.
- An additional vehicle registration tax called the “Transportation Improvement Fee” with rates based on the value of the motor vehicle effective January 1, 2018 with annual inflation adjustments beginning July 1, 2020.
- An additional \$100 vehicle registration tax on zero emissions vehicles of model year 2020 or later effective July 1, 2020 with annual inflation adjustments beginning July 1, 2021.

The Road Repair and Accountability Act of 2017 (SB1 Beall) also adopted annual inflationary adjustments beginning July 1, 2020 to all per-gallon motor vehicle fuel excise taxes including the rates allocated through the Highway Users Tax Account (HUTA).

¹ Taxes on aircraft jet fuel are transferred to the state Aeronautics Account.

Highway Users Tax Account (HUTA)

Revenue Allocations – Streets & Highways Code Sec 2103-2108 “HUTA”

Cities and counties receive revenue from the motor vehicle fuel taxes imposed pursuant to Revenue and Taxation Code Section 7360(a) and (b) through the Highway User Tax Account under the following formulas outlined in the Streets and Highways code and illustrated in Figure 1.

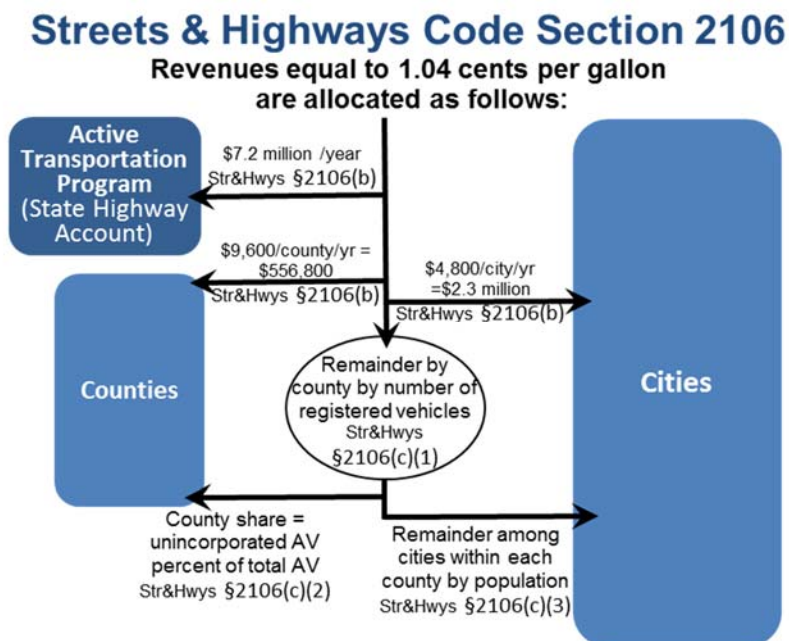
Section 2104. Section 2104 allocates funds to counties with designated allotments for engineering and administration, snow removal, heavy rainfall / storm damage as well as county streets, roads and public mass transit guideways and facilities.

Section 2105. Section 2105(a) allocates 11.5 percent of the tax revenues in excess of 9 cents per gallon (i.e. the Proposition 111 rate) monthly among counties based on population.

Section 2105(b) allocates 11.5 percent of the tax revenues in excess of 9 cents per gallon (i.e. the Proposition 111 rate) monthly among cities based on population.

Section 2106. Revenues equal to 1.04 cents per gallon are allocated as follows:

- \$7.2 million per year to the State Bicycle Transportation Account.
- \$400 per month to each city (\$2,308,800 per year among the 481 eligible cities²)
- \$800 per month to each county (\$556,800 per year among the 58 counties)
- The residual amount to each county and the cities in that county based on registered vehicles. In each county, from this amount, the county receives an allotment based on the share of assessed value of the county which is in the unincorporated area. The remainder is allocated to the cities within the county based on population.



² The city of Rolling Hills has only private streets and is therefore not eligible to receive these allocations.

Section 2107. This section provides monthly allocations to cities of 1.315 cents per gallon of gasoline, 1.8 cents per gallon of diesel, and 2.59 cents per liquefied petroleum gas (LPG), as follows.

- a. Each city with snow removal costs in excess of \$5,000 is allocated 50 percent of the cost exceeding \$5,000.
- b. The remainder is allocated to cities based on population.

Section 2107.5. These funds (about \$2.7 million per year) are allocated to cities annually in July based on population as follows:

Streets & Highway Code §2107.5	
City Population	Annual Allocation
over 500,000	\$ 20,000
100,000 to 500,000	\$ 10,000
50,000 to 99,999	\$ 7,500
25,000 to 49,999	\$ 6,000
20,000 to 24,999	\$ 5,000
15,000 to 19,999	\$ 4,000
10,000 to 14,999	\$ 3,000
5,000 to 9,999	\$ 2,000
less than 5,000	\$ 1,000

Section 2107.5 funds must be used for engineering costs and administrative expenses related to city streets. Cities with populations under 10,000 may also expend the moneys for street construction or acquisition of street rights-of-way.

Section 2103 HUTA and the 2010 Gasoline Sales Tax – Excise Tax Swap

In March 2010 as a part of a special budget session called by Governor Schwarzenegger, the Legislature enacted a swap of state sales taxes on gasoline for a gasoline excise tax. Intended to be “revenue neutral,” the fuel tax swap provided the Legislature with greater flexibility in the use of funds, in particular relieving the general fund from the cost of state transportation debt service payments. The fuel tax swap:

1. Repealed the state sales tax on gasoline (local rates including the Bradley Burns are NOT affected);
2. Increased the excise tax on gasoline by 17.322 cents and added an annual adjustment mechanism intended to ensure the new excise tax provides, over time, the same amount of revenues expected from the sales tax on gas (no more, no less);
3. Increased the sales tax on diesel by 1.75 percent and allocated 75 percent to local transit agencies and 25 percent to state transit programs. The excise tax on diesel was reduced from 18 cents to 13.6 cents. Sales tax revenues from diesel must go to transit funding.
4. Provided for a specific allocation of the funds among state and local transportation needs.

Revenues from the new Section 2103 excise tax rate are now allocated as follows:

1. State transportation debt service;
2. Remainder allocated:
 - a. 44 percent to the State Transportation Improvement Program (STIP);
 - b. 12 percent State Highway Operation and Protection Program (SHOPP);
 - c. 44 percent evenly split between cities and counties using current HUTA formulas.

Section 2103 funds are allocated to cities on a per capita basis and to counties 75 percent based on the proportion of registered vehicles and 25 percent based on the proportion of maintained county road miles.

The law included expressed legislative intent to fully replace the local streets and road funds cities and counties would have received under Proposition 42 state sales tax on gasoline with allocations from the new higher motor vehicle excise tax (HUTA) rate.

However, the swap created certain revenue effects related to the timing and receipt of revenues. In particular, the law provided that the new excise tax rate be adjusted annually by the BOE to garner an amount of revenues equal to what Prop42 would have provided in the prior year. Thus, the annual Sec 2103 funds were always “looking backward.” If the Section 2103 amounts generated less than Prop42 would have, the difference was made up until the following year.

In the years following the swap, there were a number of snafus and changes in interpretation of the Section 2103 allocation. In FY2011-12 SCO allocated more money to cities and counties and did not fully backfill state transportation programs for weight fees that were used for debt service and loans that those funds would have otherwise received. This was contrary to the Legislature’s intention, but the statute was not clear. The statute was clarified in the 2013 budget to clarify the original intent of the weight fee swap to fully backfill state transportation funds. [Streets & Highways Code 2103 (a)(1)(D)].

The Section 2103 Local Streets and Roads allocation to cities and counties have varied and declined dramatically and, due to BOE’s failure to enact a rate increase in 2018, fell to \$244 million for FY2018-19, about 5 percent down from prior year.

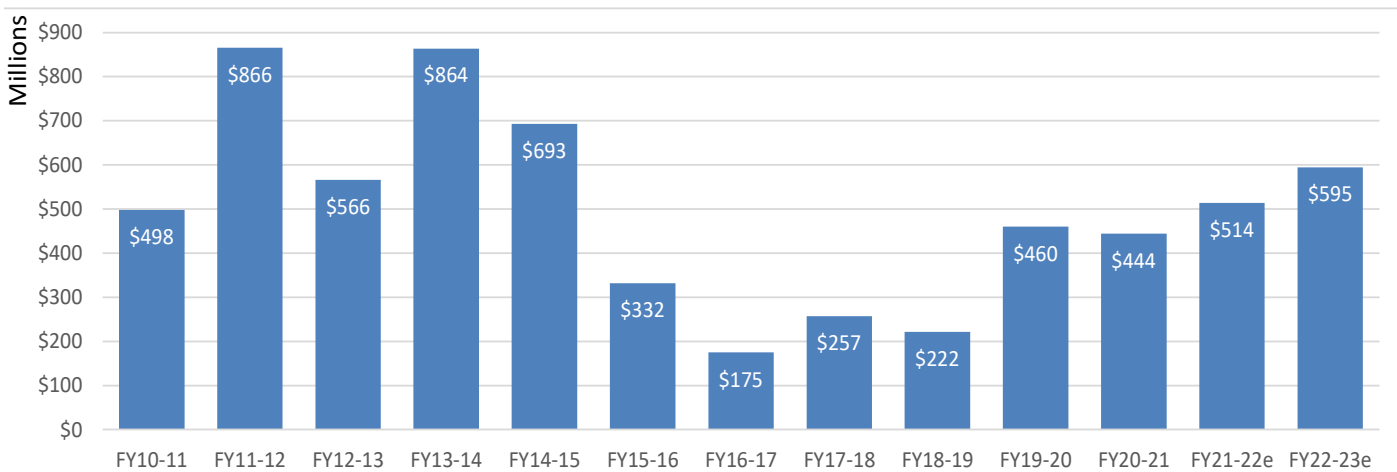
Changes to HUTA Allocated Rates, Including the Variable Rate by the Road Repair and Accountability Act of 2017 (SB1 Beall)

In addition to increasing various fuel and motor vehicle registration taxes, the Road Repair and Accountability Act of 2017 (SB1 Beall) removed BOE’s discretionary rate setting role over the Section 2103 variable rate and reset the variable rate at 17.3 cents per gallon on July 1, 2019, up from the current 11.7 cents. This adjustment more than doubled Section 2103 revenue allocations for FY2019-20 over the prior year.

With regard to diesel fuel taxes, SB1 also eliminated the price-based adjustment mechanism applied to the diesel fuel tax rate.

On July 1, 2020, and every July 1 thereafter, the gasoline and diesel fuel excise tax rates including the 18 cent per gallon base rate, the 17.3 percent per gallon rate, the diesel fuel excise tax rate and vehicle registration taxes are increased by the change in the California Consumer Price Index.

Streets & Highways Code Section 2103 Variable Gas Tax Allocations to Cities and Counties

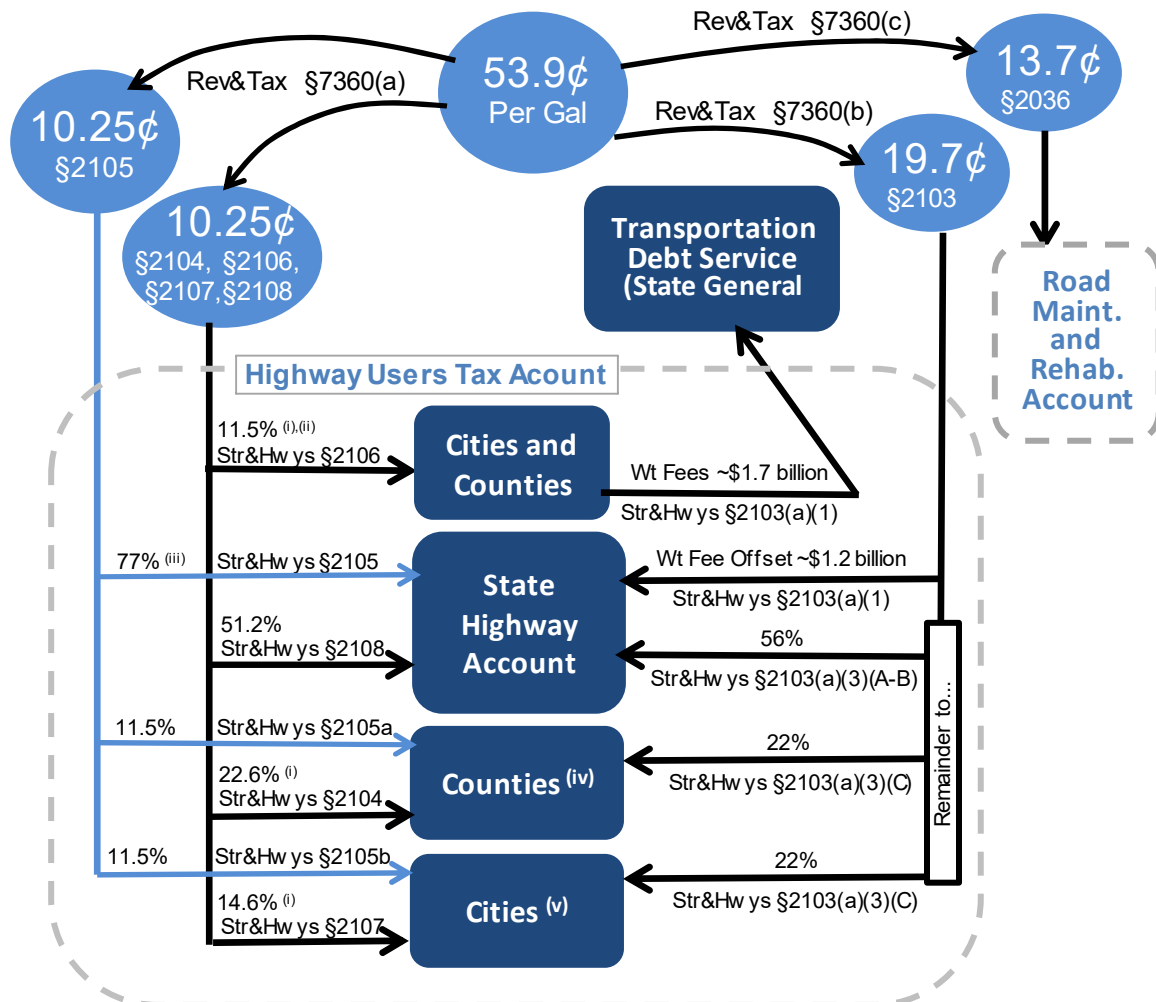


California Gasoline Excise Tax Rates - Per Gallon				
Effective Date	Base Rate	Sec2103	SB1 Rate	Total
July 1, 2010	\$ 0.180	\$ 0.173		\$ 0.353
July 1, 2011	\$ 0.180	\$ 0.177		\$ 0.357
July 1, 2012	\$ 0.180	\$ 0.180		\$ 0.360
July 1, 2013	\$ 0.180	\$ 0.215		\$ 0.395
July 1, 2014	\$ 0.180	\$ 0.180		\$ 0.360
July 1, 2015	\$ 0.180	\$ 0.120		\$ 0.300
July 1, 2016	\$ 0.180	\$ 0.098		\$ 0.278
July 1, 2017	\$ 0.180	\$ 0.117		\$ 0.297
Nov 1, 2017*	\$ 0.180	\$ 0.117	\$ 0.120	\$ 0.417
July 1, 2019	\$ 0.180	\$ 0.173	\$ 0.120	\$ 0.473
July 1, 2020	\$ 0.192	\$ 0.185	\$ 0.128	\$ 0.505
July 1, 2021	\$ 0.194	\$ 0.187	\$ 0.130	\$ 0.511
July 1, 2022 est	\$ 0.205	\$ 0.197	\$ 0.137	\$ 0.539

California Diesel Excise Tax Rates			
Effective Date	Base Rate	SB1 Rate	Total
July 1, 2017	\$ 0.160		\$ 0.160
Nov 1, 2017*	\$ 0.160	\$ 0.200	\$ 0.360
July 1, 2019	\$ 0.160	\$ 0.200	\$ 0.360
July 1, 2020	\$ 0.171	\$ 0.214	\$ 0.385
July 1, 2021	\$ 0.173	\$ 0.216	\$ 0.389
July 1, 2022 est	\$ 0.183	\$ 0.228	\$ 0.411

Rates effective July 1, 2022

Allocation of Gasoline Excise Tax Revenues



Use of Funds: HUTA

The use of local Motor Vehicle Fuel Tax funds is restricted by Article XIX of the California State Constitution and by Streets and Highways Code Section 2101. All Motor Vehicle Fuel Tax funds allocated from the Highway Users Tax Account must be expended for the following:

- (a) The research, planning, construction, improvement, maintenance, and operation of public streets and highways (and their related public facilities for nonmotorized traffic), including the mitigation of their environmental effects, the payment for property taken or damaged for such purposes, and the administrative costs necessarily incurred in the foregoing purposes.
- (b) The research and planning for exclusive public mass transit guideways (and their related fixed facilities), the payment for property taken or damaged for such purposes, and the administrative costs necessarily incurred in the foregoing purposes.
- (c) The construction and improvement of exclusive public mass transit guideways (and their related fixed facilities), including the mitigation of their environmental effects, the payment for property taken or damaged for such purposes, the administrative costs necessarily incurred in the foregoing purposes, and the maintenance of the structures and the immediate right-of-way for the public mass transit guideways.
- (d) The payment of principal and interest on voter-approved bonds issued for the purposes specified above.

Three Year State General Fund TCRF Loan Repayment Funds

SB1 stipulated the repayment of \$706 million by the state General Fund to transportation funds over three fiscal years: 2017-18, 2018-19, and 2019-20. Under SB1, \$75 million was allocated to local streets and roads from repayments of Transportation Congestion Relief Funds (TCRF) in each of these three years. These funds were allocated half to cities and half to counties with the city funds allocated among cities on a per capita basis, the county funds allocated among counties based on numbers of registered vehicles and county road mileage.

These TCRF revenues may be deposited in local HUTA funds.³ However, these TCRF funds carry slightly different use requirements than HUTA funds. TCRF funds may be expended only for street and highway maintenance, rehabilitation, reconstruction or storm damage repair. For these purposes,

- “Maintenance” means patching and/or overlay and sealing.
- “Reconstruction” includes any overlay, sealing or widening of the roadway, if the widening is necessary to bring the roadway width to the state minimum standards, but does not include widening for the purpose of traffic capacity.
- “Storm damage repair” is repair or reconstruction of local streets and highways and related drainage improvements that have been damaged due to winter storms and flooding, and construction of drainage improvements to mitigate future roadway flooding and damage problems, in those jurisdictions that have been declared disaster areas by the President of the United States.

³ Note that the “loan repayment” is between the state general fund and state transportation funds. From an accounting standpoint this is NOT a debt repayment to local agencies, it is simply revenue.

Road Maintenance and Rehabilitation Account (RMRA)

Revenue Allocations – Streets & Highways Code Sec 2031 “RMRA”

The Road Repair and Accountability Act of 2017 (SB1 Beall) represented a significant additional investment in California’s transportation systems of over \$5 billion per year. The Act increased per gallon fuel excise taxes, diesel fuel sales taxes and vehicle registration taxes, stabilized the problematic price-based fuel tax rates and provided for inflationary adjustments to rates in future years. The Act is more than doubling local streets and road funds allocated through the Highway Users Tax Account (HUTA) and through the Road Maintenance and Rehabilitation Account (RMRA) which it established.

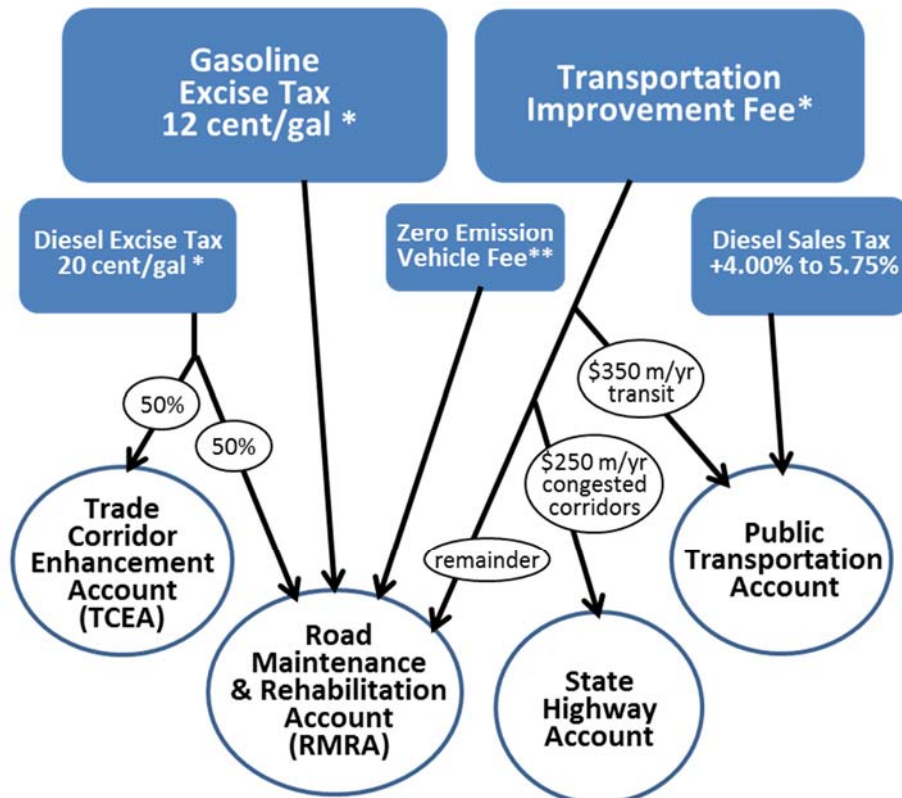
The RMRA receives funds⁴ from the following new taxes imposed under the Road Repair and Accountability Act of 2017:

- A 12 cent per gallon increase to the gasoline excise tax effective November 1, 2017.
- A 20 cent per gallon increase to the diesel fuel excise tax effective November 1, 2017, half of which will be allocated to Trade Corridors Enhancement Account (TCEA) with the remaining half to the RMRA.
- A new vehicle registration tax called the “transportation improvement fee,” effective January 1, 2018, based on the market value of the vehicle.
- An additional new \$100 vehicle registration tax on zero emission vehicles model year 2020 and later effective July 1, 2020.
- Annual rate increases to these taxes beginning July 1, 2020 (July 1, 2021 for the ZEV fee), and every July 1 thereafter for the change in the California Consumer Price Index. The first adjustment made on July 1, 2020 covered CPI change for two years: November 1, 2017 through November 12, 2019.

SB1 Transportation Improvement Fee				
	Effective Date			
Vehicle Value	Jan 2018	Jan 2020	Jan 2021	Jan 2022
0 - \$4,999	\$ 25	\$ 27	\$ 27	\$ 28
\$5,000 - \$24,999	\$ 52	\$ 54	\$ 55	\$ 56
\$25,000 - \$34,999	\$ 105	\$ 107	\$ 110	\$ 112
\$35,000 - \$59,999	\$ 157	\$ 161	\$ 165	\$ 168
\$60,000 & over	\$ 183	\$ 188	\$ 192	\$ 196

⁴ In addition, funds from a 4 percent increase in the diesel sales tax to 5.75 percent from the prior 1.75 percent effective November 1, 2017 are allocated to the Public Transportation Account.

Road Maintenance and Rehabilitation Account Revenues



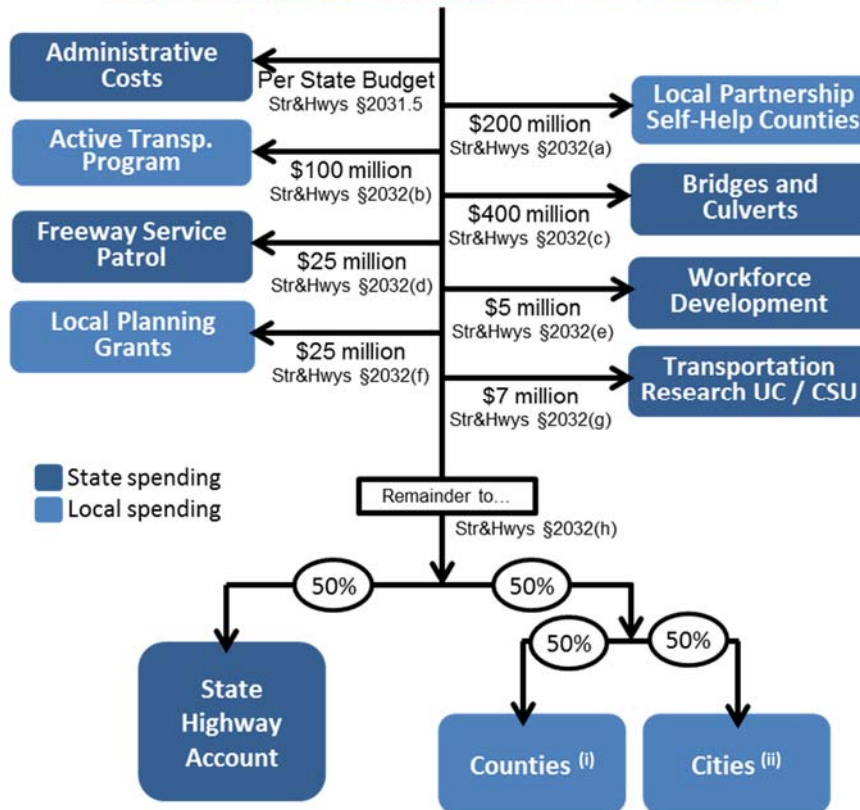
* adjusted for inflation annually beginning 7/1/2020

** effective 7/1/2020 adjusted for inflation annually beginning 7/1/2021

The Road Repair and Accountability Act directs the State Controller to allocate, on a monthly basis, fifty percent of the revenues in the RMRA to the State Highway Operation and Protection Program (SHOP) in the State Highway Account and half to cities and counties. But there are a series of specific program allocations, subject to appropriation in the annual state budget, to be taken out first:

1. Administrative costs.
2. \$200 million for the State-Local-Partnership Program for existing and aspiring self-help jurisdictions.
3. \$100 million annually for the Active Transportation Program for the purpose of encouraging increased use of active modes of transportation, such as biking and walking.
4. \$400 million for state bridge and culvert maintenance and rehabilitation.
5. \$25 million for the state's Freeway Service Patrol program.
6. \$5 million for five years through FY 2021-22 for pre-apprenticeship training programs of the California Workforce Development Board.
7. \$25 million for local planning grants to encourage local and regional planning.
8. \$7 million for transportation research and transportation-related workforce education, training, and development including \$5 million to the University of California and \$2 million to the California State University.

Allocation of Road Maintenance and Rehabilitation Account Revenues



(i) County apportionments are based on numbers of registered vehicles and county road mileage.
(ii) City apportionments are based on population.

Use of Funds: RMRA [Streets and Highways Code Section 2030]

The use of RMRA local streets and roads funds is similar but, not identical, to HUTA use rules. Pursuant to Streets and Highways Code Section 2030, RMRA local streets and roads allocations must be used for projects "that include, but are not limited to," the following

- Road maintenance and rehabilitation
- Safety projects
- Railroad grade separations
- Traffic control devices
- Complete street components, "including active transportation purposes, pedestrian and bicycle safety projects, transit facilities, and drainage and storm-water capture projects in conjunction with any other allowable project."

RMRA funds may also be used to satisfy a match requirement for projects eligible for state or federal funds.

SB1 also contains non-obligatory intent language regarding the use of funds. "To the extent possible and cost effective," cities and counties are to use a use:

- advanced recycling techniques that reduce greenhouse gas emissions;
- automotive technologies, ZEV fueling, infrastructure-to-vehicle;
- communications autonomous vehicle systems;

- resiliency re climate change, fires, floods, sea level rise; and
- complete street elements, access for bicycles, pedestrians.

If a city or county has an average Pavement Condition Index that meets or exceeds 80, the city or county may spend its RMRA funds on transportation priorities other than these. [Streets and Highways Code Sec 2037]

Maintenance of Effort: RMRA [Streets and Highways Code Sec 2036]

The Road Repair and Accountability Act contains a local agency maintenance of effort (MOE) requirement that applies to funds allocated through the RMRA. The Act states that the MOE requirement is to ensure that these new roads funds do not supplant existing levels of city and county general revenue spending on streets and roads. The MOE for the receipt of RMRA funds state that a city or county must maintain general fund spending for street, road, and highway purposes at no less than average of 2009–10, 2010–11, and 2011–12 years. In making this calculation an agency may exclude one-time funds. A city or county that fails to comply in a particular year may make it up with in additional expenditures in the following year.

The Act provides that the State Controller may perform audits to ensure compliance with these MOE rules. If the State Controller determines that a city or county has not met its MOE, the agency will be required to reimburse the state for the funds it received during that fiscal year. However, a city or county that fails to comply in a particular fiscal year may expend during that fiscal year and the following fiscal year a total amount that is sufficient to comply. Any funds withheld or returned as a result of a failure to comply will be reapportioned to the other counties and cities whose expenditures are in compliance.

For further guidance, see the State Controller’s *“Guidelines Relating to Gas Tax Expenditures for Cities and Counties.”*

Spending Plans and Reports: RMRA [Streets and Highways Code Sec 2034]

The Road Repair and Accountability Act stipulates that, prior to receiving RMRA funds in a fiscal year, a city or county must submit to the California Transportation Commission (CTC) a project list pursuant to an adopted budget. The list must include for each project: description, location, schedule, useful life. [Streets and Highways Code Sec 2034(a)]

The Road Repair and Accountability Act also requires that a city or county submit to the CTC an annual report of project completion in order to receive RMRA funds. The report must include descriptions of all projects for which RMRA funds were expended including: description, location, funds expended, completion date, estimated useful life of the project.

There are no additional use or reporting requirements on Highway Users Tax Account funds (Streets and Highways Code Sec 2103-2107) or on the three year transportation loan repayment funds.

Budgeting and Accounting for RMRA Funds: The ~60 Day Delay

The allocation of Road Maintenance and Rehabilitation Account (RMRA) revenues to cities and counties takes many weeks. It takes the State Controller’s Office roughly 30 to 60 days from the time of revenue collection by the state, through the various statutory set asides to distribute the funds to cities and counties in monthly allocations. Consequently, the estimates shown in this report are for revenues collected for July through June are not received on a cash basis by local agencies until September through August. That is, for example, the FY2022-23 figure for your agency is revenues collected in and for July 2022 through June 2023 but distributed in

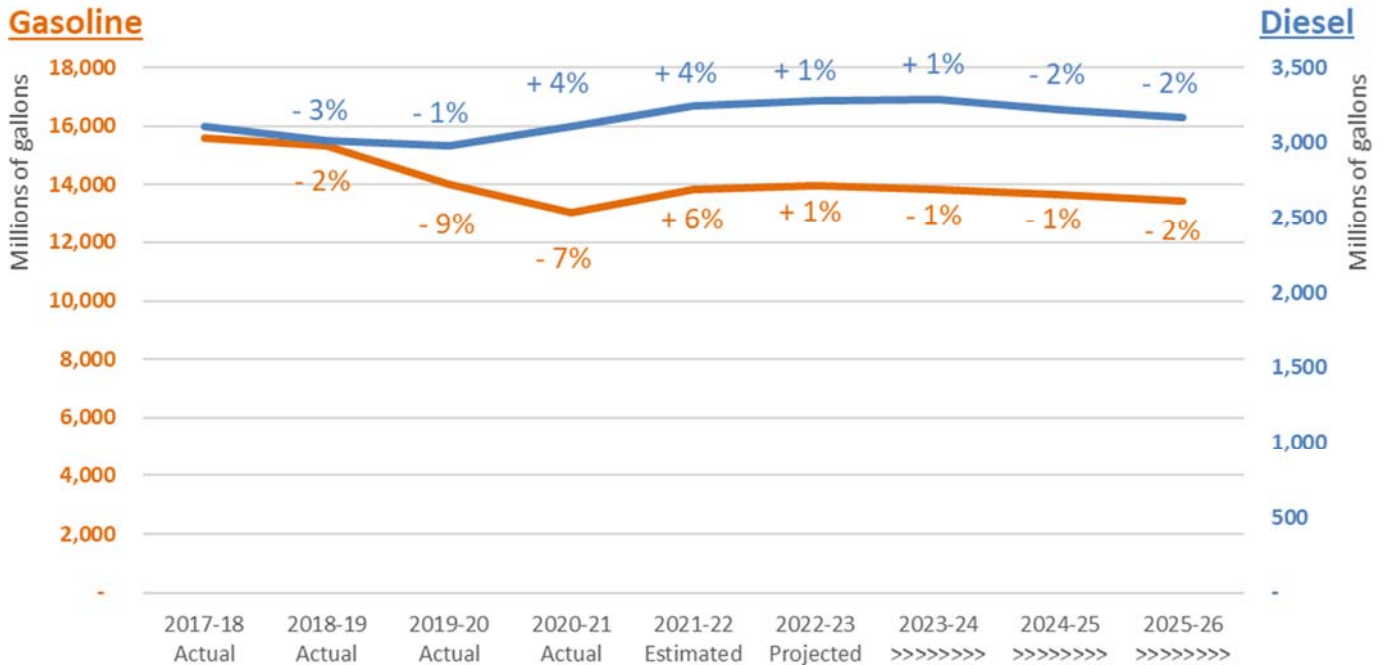
monthly allocations September 2022 through August 2023. Cities and counties thus have two choices in the budgeting and accounting of RMRA revenues:

- 1) apply a 60 day accrual policy to RMRA funds (*recommended*); or
- 2) adjust RMRA budgets (especially in FY2017-18) to reflect a distributed cash basis.

Local Streets and Roads (HUTA and RMRA) Revenue Estimates for FY2021-22 and FY2021-23

We have computed revenue estimates for each city and county using a model reflecting the local allocation formulas, latest population figures used by the State Controller for allocations and estimates by the state Department of Finance (DOF) of statewide HUTA and RMRA tax revenues provided with the **Governor’s May Revision to his Proposed 2022-23 Budget (released May 13, 2022)** and analyses of SB1(Beall), The Road Repair and Accountability Act of 2017.

Fuel consumption was sharply down during the height of the COVID-19 pandemic but has largely recovered to its prior, slightly declining trajectory. Recently, fuel prices have increased steeply but the price of fuel no longer has a direct effect on local streets and roads revenues because all rates are per gallon, regardless of price.



Despite lower fuel consumption, scheduled rate increases stipulated in SB1 have kept local allocations of revenue growing at a modest pace. Total 2019-20 LSR allocations (including HUTA, TCRF, and RMRA) were 4.0 percent above 2018-19. Allocations in 2020-21 were 2.8 percent up from 2019-20. For the current year FY2021-22, the Department of Finance currently (*May 2022*) projects total LSR allocations to cities and counties will be 9.3 percent above the prior year. For the budget year FY2022-23, DOF estimates total local streets and roads allocations will grow 11.0 percent.

Governor’s Proposal to Suspend the Annual Fuel Tax Rate Adjustments

In his FY 2022-23 Proposed Budget, the Governor floats the idea of a fuel tax increase suspension for 2022. That is, the fuel tax rate increases that would otherwise occur under SB1 would be suspended for one year. The Legislature would have had to have acted by May 1 to suspend any of the fuel tax increases scheduled to go into effect July 1. They did not.

HUTA (Highway Users Tax Account)

Revenues allocated to cities and counties through HUTA under Sections 2103-2107 of the Streets and Highways Code are derived from per gallon rates. As described above, these rates are adjusted annually on July 1. Revenue changes depend on the combined effects of 1) these rate adjustments, 2) taxable gallonage, and 3) the relative change of statutory transfers including the “weight fee offset” that pays state transportation bond debt.

Statewide fuel consumption (gallons) had been relatively flat in recent years. The COVID-19 pandemic and related restrictions caused a steep decline in fuel consumption in the spring of 2020. The effects of this are expected to ease up gradually as restrictions are lifted and travel resumes. Sec2104-2108 HUTA allocations (not including RMRA or the sec2103 variable fuel taxes) dropped 6.5 percent in 2019-20 from the prior 2018-19 year. But this drop-off was more than offset by the doubling of the Sec2103 allocations due to the reset of the formerly price-based rate. FY2019-20 contained the most dramatic fiscal and economic effects of the pandemic, those during the months of April through June 2020.

With a recovery in fuel consumption as the COVID effects begin to ease and with additional rate adjustments kicking in each July 1, DOF estimates total HUTA revenue growth in FY 2021-22 of 11.9 percent and 10.5 percent growth in FY2022-23 (*updated May 2022*).

RMRA (Road Maintenance and Rehabilitation Account)⁵

The Road Repair and Accountability Act (SB1) taxes that provide funding to cities and counties through the RMRA began on November 1, 2017 when the new per-gallon fuel excise taxes took effect. On January 1, 2018, the new vehicle registration tax, the “Transportation Improvement Fee,” took effect. Cities, counties and other recipients of these revenues saw the first full year of these revenues in FY2018-19. A \$100 zero emission vehicle registration tax began on July 1, 2020.

DOF now estimates FY2021-22 RMRA revenues will be 6.2 percent higher than FY2020-21 actuals and that FY2022-23 revenues will grow by 11.8 percent over the current year. (*updated May 2022*)

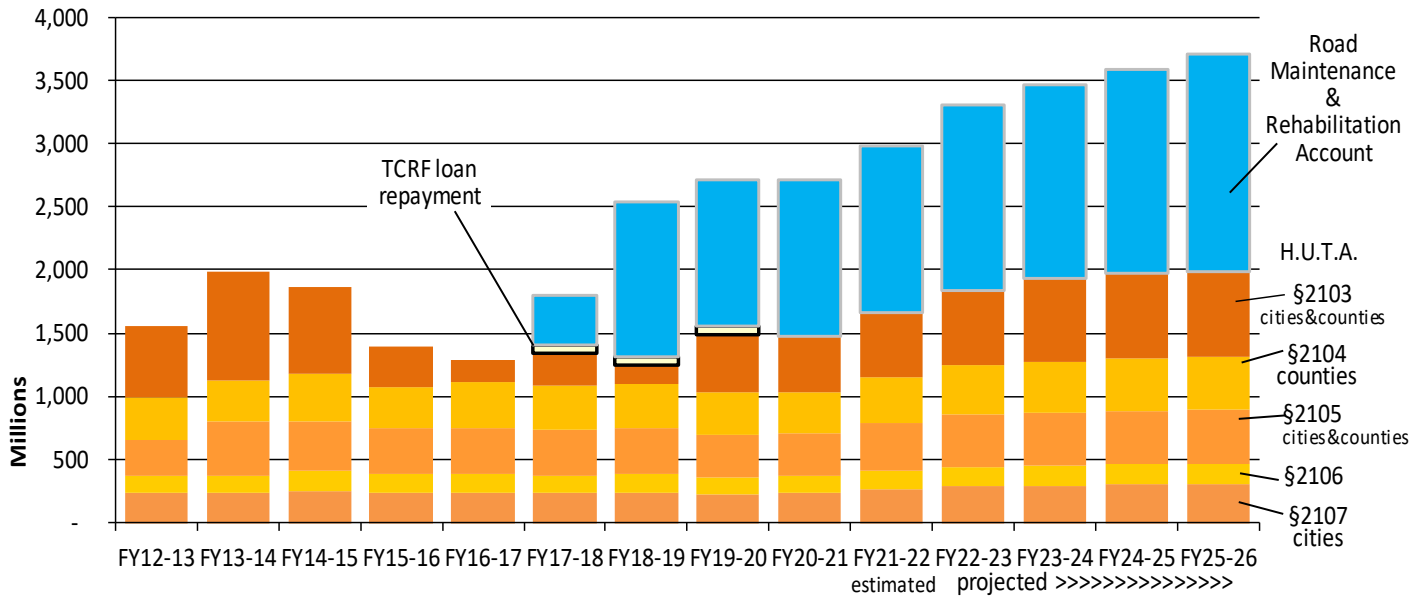
Why does city/county RMRA growth differ from city/county HUTA growth? Under SB1, various fixed-amount statutory allocations are made from the new SB1 tax rates prior to the city and county allocations.

Your Mileage Revenues May Vary

An individual city’s allocations will of course also be affected by change in the city’s population relative to the change in state population. Changes for allocations to counties will be affected other factors in the allocation rules including relative numbers of vehicle registrations, assessed values and maintained road miles.

⁵ Note that RMRA revenues are delayed 60 days from collection to allocation. That is, the revenues for a July 1 to June 30 fiscal year are allocated September 1 through August 31. These are spendable in the fiscal year because your accounting staff “accrues” them back into your fiscal year.

California Local Streets and Roads Program - State Funds to Cities and Counties



Looking Ahead: Long Term Estimates of Local Streets and Roads Funding

Assuming a gradual recovery from the COVID-19 pandemic of 2020, we can expect stable, modest year over year growth in local streets and roads revenues in future years. While fuel consumption may remain flat overall, annual cost of living adjustments will help to maintain revenues.

Due to complicated statutory transfers from these revenues before the city and county allocations are made (including the \$1.7 billion transfer for state transportation debt service), actual growth in funding allocated to cities and counties varies somewhat among the various categories of local streets and roads allocations and will not exactly mirror total tax collections. Taking all these factors into account, for the purposes of long-term transportation program planning, we estimate transportation allocations to cities and counties will increase in outyears at the following growth rates:

	<u>2023-24</u>	<u>2024-25</u>	<u>2025-26</u>	<u>2026-27</u>	<u>Beyond</u>
HUTA 2103	1.3%	0.7%	0.8%	-0.8%	0.5%
HUTA 2104	1.9%	2.3%	1.2%	1.6%	1.8%
HUTA 2105	1.9%	2.3%	1.2%	1.6%	1.8%
HUTA 2106 county	1.7%	2.1%	1.0%	1.3%	1.5%
HUTA 2106 city	2.1%	2.5%	1.3%	1.7%	1.9%
HUTA 2107	1.9%	2.3%	1.2%	1.6%	1.8%
RMRA	5.0%	5.3%	6.0%	7.2%	5.9%

Your Mileage Revenues May Vary

Allocations to each particular city also will be affected by annual changes in the city’s population relative to the change in state population in cities. The current forecast for California population, provided by the Demographics Unit of the California Department of Finance is as follows:⁶

California	<u>2021</u>	<u>2022</u>	<u>2023</u>	<u>2024</u>	<u>2025</u>	<u>2026</u>	<u>2027</u>	<u>2028</u>
Population	39,466,855	39,657,243	39,862,922	40,080,241	40,311,181	40,529,241	40,742,869	40,951,365
Population in Cities	33,012,988	33,188,953	33,377,891	33,576,762	33,787,241	33,987,124	34,183,479	34,375,717
percent change		0.53%	0.57%	0.60%	0.63%	0.59%	0.58%	0.56%
		<u>2029</u>	<u>2030</u>	<u>2031</u>	<u>2032</u>	<u>2033</u>	<u>2034</u>	<u>2035</u>
Population		41,153,499	41,350,915	41,539,031	41,717,426	41,886,845	42,047,279	42,198,325
Population in Cities		34,562,797	34,746,091	34,921,744	35,089,387	35,249,638	35,402,476	35,547,550
percent change		0.54%	0.53%	0.51%	0.48%	0.46%	0.43%	0.41%

If you think your city’s population growth will be significantly different from the statewide average in cities, then you should adjust accordingly. For example, the City of Agatha’s planning department estimates the city will see average annual residential population growth of 1.5 percent annually over the next ten years. The city’s estimated HUTA 2105 allocation for FY2022-23 is \$381,200. The long term projection of Section 2105 revenue would be:

$$\$381,200 \times \text{Sec2105 growth} \times \text{Agatha Population Growth} \div \text{Statewide City Population Growth}$$

$$\text{So, for 2023-24, the city would estimate } \$381,200 \times 1.019 \times 1.015 \div 1.0057 = \$391,149$$

And long term ...

	<u>2022-23</u>	<u>2023-24</u>	<u>2024-25</u>	<u>2025-26</u>	<u>2026-27</u>	<u>2027-28</u>	<u>2028-29</u>
HUTA Sec2015	\$ 381,200						
2105 growth		1.9%	2.3%	1.2%	1.6%	1.8%	1.8%
Agatha pop		1.5%	1.5%	1.5%	1.5%	1.5%	1.5%
Cities pop		0.57%	0.60%	0.63%	0.59%	0.58%	0.56%
HUTA Sec2015	\$ 392,035	\$ 404,640	\$ 413,036	\$ 423,440	\$ 434,792	\$ 446,536	

Changes for allocations to counties will be affected by other factors in the allocation rules, including relative numbers of vehicle registrations, assessed values and maintained road miles.

mjgc

ATTACHMENTS:

- A) Local Streets and Roads - Projected Individual City Revenues – FY2021-22
- B) Local Streets and Roads - Projected Individual City Revenues – FY2022-23
- C) Local Streets and Roads - Projected Individual County Revenues – FY2021-22
- D) Local Streets and Roads - Projected Individual County Revenues – FY2022-23

⁶ See <http://www.dof.ca.gov/Forecasting/Demographics/projections/> California population in cities estimated by author based on recent historic trend of proportion of population in cities.

Local Streets and Roads - Projected FY2021-22 Revenues

Based on State Dept of Finance statewide revenue projections

Estimated May 2022

	Highway Users Tax Acct (HUTA) ⁽¹⁾ Streets & Highways Code					TOTAL HUTA	Road Mntnc Rehab Acct	TOTAL
	Sec2103 ⁽⁵⁾	Sec2105 ⁽³⁾	Sec2106 ⁽³⁾	Sec2107 ⁽³⁾	Sec2107.5 ⁽⁴⁾			
ALAMEDA COUNTY								
ALAMEDA	628,413	464,425	261,360	632,346	7,500	1,994,044	1,602,592	3,596,636
ALBANY	144,035	106,449	63,605	144,937	4,000	463,025	367,322	830,347
BERKELEY	907,152	670,427	375,160	912,829	10,000	2,875,568	2,313,440	5,189,009
DUBLIN	502,635	371,470	210,009	505,781	7,500	1,597,396	1,281,832	2,879,228
EMERYVILLE	97,785	72,267	44,722	98,396	3,000	316,170	249,372	565,543
FREMONT	1,819,875	1,344,970	747,795	1,831,264	10,000	5,753,904	4,641,087	10,394,991
HAYWARD	1,228,242	907,727	506,251	1,235,929	10,000	3,888,148	3,132,291	7,020,439
LIVERMORE	708,685	523,750	294,133	713,120	7,500	2,247,189	1,807,305	4,054,494
NEWARK	379,601	280,542	159,778	381,976	6,000	1,207,897	968,066	2,175,964
OAKLAND	3,383,643	2,500,665	1,386,229	3,404,818	10,000	10,685,355	8,629,042	19,314,397
PIEDMONT	87,762	64,860	40,630	88,311	3,000	284,564	223,813	508,377
PLEASANTON	608,888	449,996	253,389	612,699	7,500	1,932,473	1,552,801	3,485,274
SAN LEANDRO	678,175	501,202	281,676	682,419	7,500	2,150,973	1,729,498	3,880,471
UNION CITY	565,443	417,888	235,651	568,981	7,500	1,795,463	1,442,004	3,237,467
ALPINE COUNTY								
AMADOR COUNTY								
AMADOR	1,437	1,062	5,580	1,446	1,000	10,526	3,665	14,191
IONE	61,517	45,464	38,181	61,902	2,000	209,065	156,883	365,948
JACKSON	36,135	26,705	24,408	36,361	1,000	124,609	92,152	216,762
PLYMOUTH	7,808	5,771	9,037	7,857	1,000	31,473	19,913	51,385
SUTTER CREEK	19,431	14,360	15,344	19,553	1,000	69,688	49,553	119,241
BUTTE COUNTY								
BIGGS	13,418	9,916	10,131	13,502	1,000	47,967	34,218	82,185
CHICO	866,200	640,161	348,971	871,621	10,000	2,736,954	2,209,003	4,945,957
GRIDLEY	51,153	37,804	25,125	51,473	2,000	167,556	130,452	298,008
OROVILLE	138,783	102,567	59,943	139,652	4,000	444,945	353,928	798,873
PARADISE	203,696	150,540	85,735	237,387	6,000	683,358	519,469	1,202,827
CALAVERAS COUNTY								
ANGELS CAMP	31,372	23,186	27,442	31,569	1,000	114,569	80,007	194,576
COLUSA COUNTY								
COLUSA	48,698	35,990	17,819	49,003	2,000	153,509	124,191	277,700
WILLIAMS	42,630	31,506	16,196	42,897	2,000	135,229	108,716	243,946

Local Streets and Roads - Projected FY2021-22 Revenues

Based on State Dept of Finance statewide revenue projections

Estimated May 2022

	Highway Users Tax Acct (HUTA) ⁽¹⁾ Streets & Highways Code					TOTAL HUTA	Road Mntnc Rehab Acct	TOTAL
	Sec2103 ⁽⁵⁾	Sec2105 ⁽³⁾	Sec2106 ⁽³⁾	Sec2107 ⁽³⁾	Sec2107.5 ⁽⁴⁾			
CONTRA COSTA COUNTY								
ANTIOCH	876,751	647,959	389,179	882,238	10,000	2,806,127	2,235,910	5,042,037
BRENTWOOD	513,528	379,520	229,938	516,742	7,500	1,647,228	1,309,611	2,956,838
CLAYTON	87,545	64,699	43,181	88,092	3,000	286,517	223,258	509,775
CONCORD	1,004,362	742,269	445,126	1,010,647	10,000	3,212,404	2,561,346	5,773,750
DANVILLE	341,119	252,103	154,351	343,254	6,000	1,096,827	869,930	1,966,757
EL CERRITO	193,036	142,663	89,430	194,244	5,000	624,373	492,285	1,116,658
HERCULES	200,945	148,508	92,897	202,203	6,000	650,553	512,456	1,163,009
LAFAYETTE	197,014	145,602	91,174	198,247	6,000	638,037	502,430	1,140,467
MARTINEZ	286,120	211,456	130,239	287,911	6,000	921,726	729,671	1,651,397
MORAGA	130,680	96,578	62,092	131,498	4,000	424,847	333,263	758,110
OAKLEY	333,264	246,298	150,908	335,350	6,000	1,071,820	849,899	1,921,718
ORINDA	148,223	109,543	69,783	149,150	4,000	480,700	378,001	858,701
PINOLE	150,484	111,214	70,774	151,426	4,000	487,898	383,767	871,665
PITTSBURG	578,798	427,758	258,553	582,420	7,500	1,855,029	1,476,064	3,331,092
PLEASANT HILL	265,190	195,987	121,063	266,849	6,000	855,089	676,293	1,531,382
RICHMOND	855,634	632,352	379,921	860,989	10,000	2,738,896	2,182,057	4,920,953
SAN PABLO	241,167	178,233	110,531	242,676	6,000	778,608	615,030	1,393,638
SAN RAMON	651,558	481,530	290,451	655,635	7,500	2,086,675	1,661,617	3,748,291
WALNUT CREEK	554,084	409,493	247,718	557,551	7,500	1,776,346	1,413,037	3,189,383
DEL NORTE COUNTY								
CRESCENT CITY	59,381	43,885	24,120	59,752	2,000	189,139	151,434	340,573
EL DORADO COUNTY								
PLACERVILLE	84,592	62,517	59,003	85,122	3,000	294,235	215,729	509,964
SOUTH LAKE TAHOE	181,786	134,348	121,281	1,228,112	5,000	1,670,528	463,596	2,134,123

Local Streets and Roads - Projected FY2021-22 Revenues

Based on State Dept of Finance statewide revenue projections

Estimated May 2022

	Highway Users Tax Acct (HUTA) ⁽¹⁾ Streets & Highways Code					TOTAL HUTA	Road Mntnc Rehab Acct	TOTAL
	Sec2103 ⁽⁵⁾	Sec2105 ⁽³⁾	Sec2106 ⁽³⁾	Sec2107 ⁽³⁾	Sec2107.5 ⁽⁴⁾			
FRESNO COUNTY								
CLOVIS	946,566	699,555	346,002	952,490	10,000	2,954,612	2,413,954	5,368,566
COALINGA	140,523	103,853	55,453	141,403	4,000	445,233	358,366	803,599
FIREBAUGH	63,133	46,658	27,557	63,529	2,000	202,878	161,004	363,882
FOWLER	51,285	37,902	23,286	51,606	2,000	166,080	130,789	296,869
FRESNO	4,248,025	3,139,483	1,536,054	4,274,610	20,000	13,218,171	10,833,409	24,051,581
HURON	57,524	42,513	25,535	57,884	2,000	185,456	146,699	332,155
KERMAN	125,226	92,547	49,939	126,009	4,000	397,722	319,353	717,075
KINGSBURG	101,654	75,127	41,442	102,290	3,000	323,512	259,239	582,752
MENDOTA	96,712	71,475	39,661	97,318	3,000	308,166	246,638	554,804
ORANGE COVE	74,438	55,013	31,632	74,904	2,000	237,986	189,833	427,819
PARLIER	122,973	90,882	49,127	123,742	4,000	390,724	313,608	704,332
REEDLEY	202,678	149,788	77,858	203,946	6,000	640,270	516,874	1,157,144
SANGER	212,514	157,057	81,403	213,844	6,000	670,818	541,958	1,212,776
SAN JOAQUIN	32,204	23,800	16,408	32,405	1,000	105,817	82,127	187,944
SELMA	190,247	140,601	73,377	191,438	5,000	600,663	485,172	1,085,835
GLENN COUNTY								
ORLAND	66,249	48,961	25,927	66,663	2,000	209,801	168,949	378,750
WILLOWS	48,426	35,789	20,243	48,729	2,000	155,188	123,497	278,685
HUMBOLDT COUNTY								
ARCATA	133,873	98,938	70,857	134,711	4,000	442,379	341,406	783,785
BLUE LAKE	9,805	7,246	9,638	9,866	1,000	37,555	25,005	62,560
EUREKA	211,255	156,127	109,040	212,577	6,000	695,000	538,748	1,233,748
FERNDALE	10,652	7,872	10,056	10,718	1,000	40,298	27,164	67,462
FORTUNA	92,657	68,478	50,520	93,237	3,000	307,891	236,295	544,186
RIO DELL	26,167	19,339	17,712	26,331	1,000	90,548	66,732	157,280
TRINIDAD	2,851	2,107	6,207	2,869	1,000	15,035	7,272	22,306
IMPERIAL COUNTY								
BRAWLEY	212,304	156,902	93,707	213,633	6,000	682,546	541,423	1,223,969
CALEXICO	314,540	232,460	136,521	316,509	6,000	1,006,030	802,148	1,808,178
CALIPATRIA	59,863	44,241	29,869	60,237	2,000	196,210	152,663	348,872
EL CENTRO	349,596	258,367	151,201	351,783	6,000	1,116,947	891,547	2,008,494
HOLTVILLE	48,449	35,806	25,089	48,753	2,000	160,098	123,557	283,654
IMPERIAL	157,631	116,497	70,812	158,618	4,000	507,558	401,995	909,554
WESTMORLAND	17,908	13,235	12,299	18,020	1,000	62,463	45,670	108,133
INYO COUNTY								
BISHOP	30,487	22,531	18,364	30,678	1,000	103,059	77,748	180,808

Local Streets and Roads - Projected FY2021-22 Revenues

Based on State Dept of Finance statewide revenue projections

Estimated May 2022

	Highway Users Tax Acct (HUTA) ⁽¹⁾ Streets & Highways Code					TOTAL HUTA	Road Mntnc Rehab Acct	TOTAL
	Sec2103 ⁽⁵⁾	Sec2105 ⁽³⁾	Sec2106 ⁽³⁾	Sec2107 ⁽³⁾	Sec2107.5 ⁽⁴⁾			
KERN COUNTY								
ARVIN	171,034	126,402	54,038	172,104	5,000	528,577	436,174	964,750
BAKERSFIELD	3,087,461	2,281,773	893,627	3,106,783	10,000	9,379,645	7,873,713	17,253,358
CALIFORNIA CITY	109,703	81,075	36,382	110,389	3,000	340,549	279,766	620,315
DELANO	412,092	304,555	123,434	414,671	7,500	1,262,252	1,050,926	2,313,178
MARICOPA	8,966	6,626	7,381	9,022	1,000	32,995	22,865	55,860
MCFARLAND	109,112	80,639	36,212	109,795	3,000	338,758	278,260	617,018
RIDGECREST	229,902	169,908	70,985	231,340	6,000	708,134	586,300	1,294,435
SHAFTER	158,867	117,410	50,535	159,861	5,000	491,673	405,146	896,818
TAFT	72,464	53,554	25,661	72,918	2,000	226,598	184,800	411,398
TEHACHAPI	111,987	82,763	37,039	112,688	3,000	347,477	285,591	633,068
WASCO	208,334	153,968	64,776	209,638	6,000	642,716	531,298	1,174,014
KINGS COUNTY								
AVENAL	120,463	89,028	40,422	121,217	4,000	375,130	307,208	682,338
CORCORAN	192,780	142,473	61,807	193,986	5,000	596,046	491,632	1,087,678
HANFORD	466,011	344,403	142,605	468,927	7,500	1,429,446	1,188,432	2,617,878
LEMOORE	208,287	153,934	66,393	209,591	6,000	644,205	531,179	1,175,384
LAKE COUNTY								
CLEARLAKE	118,482	87,564	46,758	119,223	4,000	376,027	302,155	678,183
LAKEPORT	37,091	27,412	17,935	37,323	1,000	120,760	94,589	215,350
LASSEN COUNTY								
SUSANVILLE	139,436	103,049	45,694	222,895	4,000	515,075	355,592	870,667
LOS ANGELES COUNTY								
AGOURA HILLS	158,937	117,461	70,023	159,931	5,000	511,352	405,324	916,676
ALHAMBRA	670,165	495,282	279,815	674,359	7,500	2,127,122	1,709,070	3,836,192
ARCADIA	447,978	331,076	188,637	450,782	7,500	1,425,973	1,142,445	2,568,418
ARTESIA	128,365	94,867	57,477	129,168	4,000	413,876	327,358	741,235
AVALON	30,867	22,812	17,467	31,061	1,000	103,208	78,719	181,927
AZUSA	385,257	284,722	162,898	387,668	6,000	1,226,544	982,490	2,209,034
BALDWIN PARK	589,962	436,009	246,902	593,655	7,500	1,874,028	1,504,536	3,378,564
BELL	282,174	208,539	120,595	283,939	6,000	901,247	719,605	1,620,853
BELLFLOWER	601,795	444,754	251,758	605,561	7,500	1,911,368	1,534,712	3,446,080
BELL GARDENS	328,121	242,496	139,451	330,175	6,000	1,046,243	836,782	1,883,025
BEVERLY HILLS	265,003	195,849	113,549	266,662	6,000	847,064	675,818	1,522,881
BRADBURY	8,142	6,017	8,141	8,193	1,000	31,494	20,765	52,259
BURBANK	807,767	596,977	336,283	812,822	10,000	2,563,849	2,059,986	4,623,835
CALABASAS	189,113	139,763	82,406	190,296	5,000	606,578	482,280	1,088,858
CARSON	712,554	526,610	297,210	717,014	7,500	2,260,888	1,817,172	4,078,061
CERRITOS	388,838	287,369	164,367	391,272	6,000	1,237,847	991,624	2,229,471
CLAREMONT	277,419	205,025	118,644	279,155	6,000	886,243	707,479	1,593,722
COMMERCE	99,626	73,628	45,683	100,249	3,000	322,187	254,068	576,255

Local Streets and Roads - Projected FY2021-22 Revenues

Based on State Dept of Finance statewide revenue projections

Estimated May 2022

	Highway Users Tax Acct (HUTA) ⁽¹⁾ Streets & Highways Code					TOTAL HUTA	Road Mntnc Rehab Acct	TOTAL
	Sec2103 ⁽⁵⁾	Sec2105 ⁽³⁾	Sec2106 ⁽³⁾	Sec2107 ⁽³⁾	Sec2107.5 ⁽⁴⁾			
COMPTON	759,644	561,411	316,535	764,398	7,500	2,409,488	1,937,262	4,346,750
COVINA	379,399	280,393	160,494	381,773	6,000	1,208,058	967,551	2,175,609
CUDAHY	184,948	136,685	80,697	186,106	5,000	593,437	471,660	1,065,096
CULVER CITY	309,257	228,555	131,710	311,193	6,000	986,715	788,675	1,775,390
DIAMOND BAR	440,652	325,662	185,630	443,410	7,500	1,402,853	1,123,760	2,526,614
DOWNEY	868,391	641,780	361,161	873,826	10,000	2,755,158	2,214,591	4,969,749
DUARTE	166,706	123,203	73,211	167,749	5,000	535,870	425,138	961,007
EL MONTE	904,853	668,727	376,124	910,515	10,000	2,870,218	2,307,575	5,177,794
EL SEGUNDO	129,437	95,660	57,917	130,247	4,000	417,260	330,092	747,352
GARDENA	468,831	346,487	197,194	471,765	7,500	1,491,778	1,195,624	2,687,402
GLENDALE	1,583,649	1,170,388	654,681	1,593,560	10,000	5,012,279	4,038,658	9,050,937
GLENDORA	400,430	295,936	169,124	402,936	7,500	1,275,927	1,021,186	2,297,113
HAWAIIAN GARDENS	112,399	83,068	50,925	113,102	3,000	362,493	286,641	649,135
HAWTHORNE	675,922	499,537	282,178	680,152	7,500	2,145,289	1,723,752	3,869,041
HERMOSA BEACH	151,548	112,001	66,991	152,497	4,000	487,036	386,481	873,518
HIDDEN HILLS	14,863	10,984	10,899	14,956	1,000	52,702	37,903	90,605
HUNTINGTON PARK	457,900	338,409	192,708	460,765	7,500	1,457,282	1,167,746	2,625,028
INDUSTRY	3,504	2,590	6,238	3,526	1,000	16,857	8,936	25,793
INGLEWOOD	855,859	632,519	356,018	861,215	10,000	2,715,612	2,182,632	4,898,244
IRWINDALE	11,196	8,274	9,394	11,266	1,000	41,130	28,551	69,681
LA CANADA FLINTRIDGE	157,297	116,250	69,350	158,282	5,000	506,179	401,143	907,323
LA HABRA HEIGHTS	42,351	31,299	22,179	42,616	2,000	140,444	108,003	248,448
LAKEWOOD	623,238	460,601	260,558	627,139	7,500	1,979,036	1,589,397	3,568,433
LA MIRADA	377,829	279,233	159,850	380,194	6,000	1,203,105	963,549	2,166,654
LANCASTER	1,253,749	926,577	519,300	1,261,595	10,000	3,971,221	3,197,339	7,168,560
LA PUENTE	311,448	230,174	132,609	313,397	6,000	993,629	794,262	1,787,891
LA VERNE	257,040	189,964	110,281	258,648	6,000	821,934	655,509	1,477,442
LAWNDALE	254,592	188,155	109,277	256,186	6,000	814,211	649,268	1,463,478
LOMITA	158,735	117,312	69,940	159,728	5,000	510,715	404,809	915,524
LONG BEACH	3,633,939	2,685,645	1,496,057	3,656,681	10,000	11,482,321	9,267,353	20,749,674
LOS ANGELES	30,481,646	22,527,317	12,513,532	30,672,409	20,000	96,214,904	77,734,988	173,949,891
LYNWOOD	542,919	401,242	227,597	546,317	7,500	1,725,576	1,384,565	3,110,141
MALIBU	98,243	72,606	45,116	98,858	3,000	317,822	250,541	568,364
MANHATTAN BEACH	272,975	201,741	116,820	274,683	6,000	872,219	696,146	1,568,365
MAYWOOD	214,977	158,878	93,020	216,322	6,000	689,196	548,239	1,237,435
MONROVIA	298,955	220,941	127,482	300,826	6,000	954,205	762,402	1,716,607
MONTEBELLO	488,798	361,244	205,388	491,857	7,500	1,554,787	1,246,544	2,801,332
MONTEREY PARK	469,111	346,694	197,309	472,047	7,500	1,492,660	1,196,337	2,688,997
NORWALK	820,043	606,049	341,320	825,175	10,000	2,602,587	2,091,292	4,693,878
PALMDALE	1,212,587	896,157	502,408	1,220,176	10,000	3,841,328	3,092,367	6,933,695
PALOS VERDES ESTATES	104,404	77,159	47,644	105,057	3,000	337,265	266,253	603,518
PARAMOUNT	428,866	316,951	180,793	431,550	7,500	1,365,660	1,093,703	2,459,364

Local Streets and Roads - Projected FY2021-22 Revenues

Based on State Dept of Finance statewide revenue projections

Estimated May 2022

	Highway Users Tax Acct (HUTA) ⁽¹⁾ Streets & Highways Code					TOTAL HUTA	Road Mntnc Rehab Acct	TOTAL
	Sec2103 ⁽⁵⁾	Sec2105 ⁽³⁾	Sec2106 ⁽³⁾	Sec2107 ⁽³⁾	Sec2107.5 ⁽⁴⁾			
PASADENA	1,128,927	834,328	468,077	1,135,992	10,000	3,577,325	2,879,016	6,456,340
PICO RIVERA	490,686	362,639	206,163	493,757	7,500	1,560,745	1,251,359	2,812,104
POMONA	1,175,644	868,854	487,248	1,183,001	10,000	3,724,748	2,998,154	6,722,902
RANCHO PALOS VERDES	323,537	239,109	137,570	325,562	6,000	1,031,778	825,092	1,856,870
REDONDO BEACH	518,586	383,258	217,612	521,831	7,500	1,648,787	1,322,509	2,971,296
ROLLING HILLS ⁽²⁾								
ROLLING HILLS ESTATES	62,916	46,498	30,619	63,310	2,000	205,342	160,449	365,791
ROSEMEAD	421,322	311,376	177,698	423,959	7,500	1,341,854	1,074,465	2,416,318
SAN DIMAS	264,180	195,241	113,211	265,833	6,000	844,465	673,717	1,518,182
SAN FERNANDO	192,321	142,134	83,723	193,525	6,000	617,704	490,463	1,108,166
SAN GABRIEL	310,345	229,359	132,156	312,287	6,000	990,147	791,449	1,781,596
SAN MARINO	102,143	75,488	46,716	102,782	3,000	330,130	260,488	590,618
SANTA CLARITA	1,721,461	1,272,238	711,235	1,732,235	10,000	5,447,168	4,390,110	9,837,278
SANTA FE SPRINGS	140,850	104,094	62,600	141,731	4,000	453,276	359,198	812,474
SANTA MONICA	722,297	533,810	301,209	726,817	7,500	2,291,633	1,842,018	4,133,652
SIERRA MADRE	84,818	62,684	39,607	85,348	3,000	275,456	216,304	491,760
SIGNAL HILL	90,256	66,703	41,838	90,821	3,000	292,619	230,173	522,792
SOUTH EL MONTE	165,455	122,279	72,698	166,491	5,000	531,922	421,948	953,870
SOUTH GATE	750,150	554,395	312,639	754,845	7,500	2,379,528	1,913,050	4,292,578
SOUTH PASADENA	199,423	147,382	86,637	200,671	6,000	640,113	508,572	1,148,685
TEMPLE CITY	281,443	207,999	120,296	283,205	6,000	898,943	717,743	1,616,686
TORRANCE	1,129,953	835,086	468,498	1,137,024	10,000	3,580,561	2,881,631	6,462,192
VERNON	2,292	1,694	5,741	2,306	1,000	13,033	5,845	18,878
WALNUT	231,797	171,309	99,923	233,248	6,000	742,276	591,135	1,333,411
WEST COVINA	824,308	609,201	343,071	829,467	10,000	2,616,047	2,102,169	4,718,216
WEST HOLLYWOOD	280,666	207,425	119,977	282,423	6,000	896,491	715,761	1,612,252
WESTLAKE VILLAGE	64,252	47,485	31,167	64,654	2,000	209,559	163,857	373,416
WHITTIER	669,683	494,926	279,617	673,874	7,500	2,125,601	1,707,842	3,833,443

Local Streets and Roads - Projected FY2021-22 Revenues

Based on State Dept of Finance statewide revenue projections

Estimated May 2022

	Highway Users Tax Acct (HUTA) ⁽¹⁾ Streets & Highways Code					TOTAL HUTA	Road Mntnc Rehab Acct	TOTAL
	Sec2103 ⁽⁵⁾	Sec2105 ⁽³⁾	Sec2106 ⁽³⁾	Sec2107 ⁽³⁾	Sec2107.5 ⁽⁴⁾			
MADERA COUNTY								
CHOWCHILLA	145,441	107,488	41,647	146,352	4,000	444,928	370,908	815,836
MADERA	514,111	379,951	135,049	517,328	7,500	1,553,939	1,311,097	2,865,036
MARIN COUNTY								
BELVEDERE	16,067	11,874	12,187	16,167	1,000	57,296	40,974	98,270
CORTE MADERA	77,918	57,585	40,624	78,406	3,000	257,534	198,709	456,243
FAIRFAX	58,254	43,053	31,583	58,619	2,000	193,509	148,561	342,071
LARKSPUR	94,739	70,016	48,358	95,332	3,000	311,445	241,605	553,051
MILL VALLEY	113,043	83,544	56,774	113,751	3,000	370,112	288,286	658,398
NOVATO	415,549	307,110	195,856	418,150	7,500	1,344,165	1,059,743	2,403,908
ROSS	19,788	14,625	13,898	19,912	1,000	69,223	50,465	119,688
SAN ANSELMO	98,585	72,859	50,126	99,202	3,000	323,771	251,413	575,184
SAN RAFAEL	458,514	338,862	215,610	461,383	7,500	1,481,869	1,169,312	2,651,180
SAUSALITO	57,143	42,231	31,073	57,501	2,000	189,948	145,728	335,676
TIBURON	73,467	54,295	38,578	73,926	2,000	242,266	187,356	429,622
MARIPOSA COUNTY								
MENDOCINO COUNTY								
FORT BRAGG	57,563	42,542	31,961	57,923	2,000	191,989	146,798	338,787
POINT ARENA	3,488	2,578	6,446	3,510	1,000	17,023	8,896	25,919
UKIAH	124,892	92,301	63,731	125,673	4,000	410,596	318,501	729,098
WILLITS	39,157	28,939	23,277	39,402	2,000	132,775	99,860	232,635
MERCED COUNTY								
ATWATER	247,142	182,649	82,889	248,688	6,000	767,368	630,266	1,397,635
DOS PALOS	43,314	32,011	18,486	43,585	2,000	139,396	110,460	249,856
GUSTINE	45,412	33,561	19,149	45,696	2,000	145,817	115,810	261,627
LIVINGSTON	120,020	88,700	42,723	120,771	4,000	376,215	306,078	682,293
LOS BANOS	333,062	246,148	110,038	335,147	6,000	1,030,395	849,384	1,879,779
MERCED	706,782	522,344	228,122	711,205	7,500	2,175,952	1,802,451	3,978,403
MODOC COUNTY								
ALTURAS	22,422	16,571	12,243	24,044	1,000	76,280	57,182	133,462
MONO COUNTY								
MAMMOTH LAKES	63,972	47,279	57,849	1,916,391	2,000	2,087,490	163,144	2,250,635

Local Streets and Roads - Projected FY2021-22 Revenues

Based on State Dept of Finance statewide revenue projections

Estimated May 2022

	Highway Users Tax Acct (HUTA) ⁽¹⁾ Streets & Highways Code					TOTAL HUTA	Road Mntnc Rehab Acct	TOTAL
	Sec2103 ⁽⁵⁾	Sec2105 ⁽³⁾	Sec2106 ⁽³⁾	Sec2107 ⁽³⁾	Sec2107.5 ⁽⁴⁾			
MONTEREY COUNTY								
CARMEL-BY-THE-SEA	31,256	23,100	14,506	31,452	1,000	101,313	79,710	181,022
DEL REY OAKS	12,975	9,589	8,829	13,056	1,000	45,449	33,088	78,537
GONZALES	65,961	48,748	25,282	66,374	2,000	208,367	168,216	376,583
GREENFIELD	142,971	105,662	49,196	143,866	4,000	445,694	364,607	810,301
KING CITY	116,361	85,996	40,933	117,089	3,000	363,379	296,746	660,125
MARINA	170,303	125,862	57,683	171,369	6,000	531,217	434,311	965,528
MONTEREY	220,509	162,966	73,273	221,889	6,000	684,635	562,346	1,246,981
PACIFIC GROVE	120,704	89,206	42,281	121,459	4,000	377,650	307,822	685,472
SALINAS	1,244,690	919,882	391,303	1,252,479	10,000	3,818,354	3,174,236	6,992,591
SAND CITY	2,991	2,211	5,729	3,010	1,000	14,941	7,628	22,569
SEASIDE	256,581	189,625	84,474	258,187	6,000	794,868	654,340	1,449,208
SOLEDAD	199,966	147,784	66,894	201,218	6,000	621,863	509,959	1,131,822
NAPA COUNTY								
AMERICAN CANYON	161,617	119,442	58,003	162,629	5,000	506,691	412,160	918,851
CALISTOGA	41,488	30,662	18,458	41,748	2,000	134,355	105,804	240,159
NAPA	616,860	455,887	207,865	620,720	7,500	1,908,833	1,573,130	3,481,963
SAINT HELENA	47,160	34,853	20,325	47,455	2,000	151,792	120,268	272,060
YOUNTVILLE	22,787	16,841	12,301	22,930	1,000	75,860	58,113	133,973
NEVADA COUNTY								
GRASS VALLEY	99,913	73,840	101,878	100,539	3,000	379,171	254,801	633,972
NEVADA CITY	23,937	17,691	28,058	24,087	1,000	94,773	61,045	155,818
TRUCKEE	125,964	93,093	127,190	1,736,675	4,000	2,086,921	321,236	2,408,157

Local Streets and Roads - Projected FY2021-22 Revenues

Based on State Dept of Finance statewide revenue projections

Estimated May 2022

	Highway Users Tax Acct (HUTA) ⁽¹⁾ Streets & Highways Code					TOTAL HUTA	Road Mntnc Rehab Acct	TOTAL
	Sec2103 ⁽⁵⁾	Sec2105 ⁽³⁾	Sec2106 ⁽³⁾	Sec2107 ⁽³⁾	Sec2107.5 ⁽⁴⁾			
ORANGE COUNTY								
ALISO VIEJO	387,013	286,020	177,324	389,435	7,500	1,247,291	986,968	2,234,259
ANAHEIM	2,746,202	2,029,568	1,229,014	2,763,388	10,000	8,778,172	7,003,427	15,781,599
BREA	350,683	259,171	161,129	352,878	6,000	1,129,861	894,320	2,024,182
BUENA PARK	634,178	468,686	287,507	638,146	7,500	2,036,017	1,617,294	3,653,311
COSTA MESA	876,223	647,568	395,407	881,706	10,000	2,810,904	2,234,563	5,045,466
CYPRESS	377,052	278,659	172,884	379,412	6,000	1,214,007	961,567	2,175,575
DANA POINT	259,114	191,497	120,309	260,736	6,000	837,656	660,799	1,498,455
FOUNTAIN VALLEY	429,744	317,600	196,373	432,433	7,500	1,383,650	1,095,942	2,479,593
FULLERTON	1,083,282	800,595	487,711	1,090,062	10,000	3,471,650	2,762,612	6,234,261
GARDEN GROVE	1,340,019	990,335	602,160	1,348,405	10,000	4,290,920	3,417,348	7,708,267
HUNTINGTON BEACH	1,529,575	1,130,425	686,661	1,539,147	10,000	4,895,808	3,900,757	8,796,565
IRVINE	2,109,864	1,559,285	945,345	2,123,069	10,000	6,747,564	5,380,624	12,128,188
LAGUNA BEACH	176,542	130,473	83,500	177,647	5,000	573,161	450,221	1,023,382
LAGUNA HILLS	241,416	178,417	112,419	242,927	6,000	781,179	615,664	1,396,843
LAGUNA NIGUEL	506,310	374,186	230,505	509,479	7,500	1,627,981	1,291,204	2,919,185
LAGUNA WOODS	126,430	93,437	61,161	127,221	4,000	412,249	322,425	734,674
LA HABRA	487,975	360,635	222,332	491,029	7,500	1,569,470	1,244,444	2,813,915
LAKE FOREST	656,802	485,406	297,592	660,912	7,500	2,108,212	1,674,991	3,783,203
LA PALMA	120,953	89,389	58,719	121,710	4,000	394,770	308,456	703,226
LOS ALAMITOS	89,642	66,250	44,761	90,203	3,000	293,856	228,608	522,464
MISSION VIEJO	731,240	540,419	330,775	735,816	7,500	2,345,750	1,864,824	4,210,574
NEWPORT BEACH	667,112	493,026	302,188	671,287	7,500	2,141,112	1,701,283	3,842,395
ORANGE	1,067,239	788,738	480,559	1,073,918	10,000	3,420,453	2,721,697	6,142,150
PLACENTIA	397,579	293,829	182,035	400,067	7,500	1,281,009	1,013,915	2,294,924
RANCHO SANTA MARGARITA	374,349	276,661	171,679	376,691	6,000	1,205,379	954,672	2,160,052
SAN CLEMENTE	497,741	367,853	226,685	500,856	7,500	1,600,635	1,269,350	2,869,984
SAN JUAN CAPISTRANO	278,149	205,565	128,795	279,890	6,000	898,398	709,342	1,607,740
SANTA ANA	2,574,508	1,902,678	1,152,476	2,590,620	10,000	8,230,282	6,565,569	14,795,851
SEAL BEACH	189,905	140,349	89,457	191,094	5,000	615,804	484,301	1,100,105
STANTON	307,455	227,223	141,859	309,379	6,000	991,916	784,078	1,775,994
TUSTIN	621,615	459,401	281,906	625,505	7,500	1,995,927	1,585,256	3,581,183
VILLA PARK	45,155	33,372	24,930	45,438	2,000	150,894	115,156	266,050
WESTMINSTER	710,628	525,186	321,587	715,075	7,500	2,279,975	1,812,259	4,092,234
YORBA LINDA	527,117	389,563	239,780	530,415	7,500	1,694,375	1,344,264	3,038,640

Local Streets and Roads - Projected FY2021-22 Revenues

Based on State Dept of Finance statewide revenue projections

Estimated May 2022

	Highway Users Tax Acct (HUTA) ⁽¹⁾ Streets & Highways Code					TOTAL HUTA	Road Mntnc Rehab Acct	TOTAL
	Sec2103 ⁽⁵⁾	Sec2105 ⁽³⁾	Sec2106 ⁽³⁾	Sec2107 ⁽³⁾	Sec2107.5 ⁽⁴⁾			
PLACER COUNTY								
AUBURN	112,134	82,872	56,044	112,836	3,000	366,887	285,968	652,854
COLFAX	16,875	12,471	12,512	16,981	1,000	59,838	43,035	102,873
LINCOLN	385,544	284,935	180,987	387,957	6,000	1,245,423	983,223	2,228,646
LOOMIS	52,893	39,091	28,971	53,224	2,000	176,180	134,890	311,070
ROCKLIN	547,495	404,624	254,996	550,922	7,500	1,765,537	1,396,235	3,161,772
ROSEVILLE	1,141,117	843,337	526,271	1,148,259	10,000	3,668,984	2,910,103	6,579,087
PLUMAS COUNTY								
PORTOLA	16,347	12,081	8,702	129,999	1,000	168,129	41,688	209,816
RIVERSIDE COUNTY								
BANNING	250,428	185,078	115,369	251,995	6,000	808,870	638,647	1,447,518
BEAUMONT	409,334	302,516	185,529	411,896	7,500	1,316,775	1,043,892	2,360,667
BLYTHE	161,734	119,529	76,209	162,746	5,000	525,217	412,457	937,674
CALIMESA	79,527	58,774	39,913	80,024	2,000	260,237	202,811	463,048
CANYON LAKE	85,657	63,304	42,619	86,193	3,000	280,773	218,443	499,216
CATHEDRAL CITY	419,333	309,906	189,944	421,957	7,500	1,348,640	1,069,392	2,418,032
COACHELLA	371,567	274,605	168,854	373,893	6,000	1,194,919	947,579	2,142,498
CORONA	1,316,540	972,983	586,079	1,324,780	10,000	4,210,382	3,357,471	7,567,853
DESERT HOT SPRINGS	233,747	172,750	108,004	235,210	6,000	755,712	596,108	1,351,820
EASTVALE	525,407	388,300	236,778	528,695	7,500	1,686,680	1,339,906	3,026,586
HEMET	656,701	485,332	294,747	660,811	7,500	2,105,090	1,674,733	3,779,823
INDIAN WELLS	42,172	31,167	23,420	42,436	2,000	141,194	107,547	248,742
INDIO	711,832	526,076	319,088	716,287	7,500	2,280,782	1,815,330	4,096,112
JURUPA VALLEY	839,839	620,679	375,606	845,095	10,000	2,691,218	2,141,776	4,832,995
LAKE ELSINORE	503,156	371,855	226,953	506,305	7,500	1,615,769	1,283,160	2,898,929
LA QUINTA	320,461	236,835	146,290	322,466	6,000	1,032,052	817,246	1,849,298
MENIFEE	774,491	572,384	346,753	779,338	7,500	2,480,467	1,975,125	4,455,592
MORENO VALLEY	1,627,095	1,202,497	723,195	1,637,278	10,000	5,200,065	4,149,455	9,349,520
MURRIETA	894,807	661,303	399,875	900,407	10,000	2,866,391	2,281,957	5,148,348
NORCO	210,261	155,392	97,634	211,577	6,000	680,864	536,212	1,217,076
PALM DESERT	418,704	309,441	189,666	421,324	7,500	1,346,634	1,067,787	2,414,422
PALM SPRINGS	371,016	274,197	168,611	373,337	6,000	1,193,161	946,172	2,139,333
PERRIS	613,597	453,476	275,715	617,437	7,500	1,967,724	1,564,808	3,532,532
RANCHO MIRAGE	146,055	107,941	69,286	146,969	4,000	474,252	372,473	846,726
RIVERSIDE	2,519,602	1,862,100	1,117,255	2,535,371	10,000	8,044,328	6,425,547	14,469,875
SAN JACINTO	398,325	294,380	180,668	400,818	7,500	1,281,690	1,015,817	2,297,507
TEMECULA	876,153	647,516	391,639	881,636	10,000	2,806,944	2,234,384	5,041,328
WILDOMAR	287,565	212,524	131,766	289,365	6,000	927,220	733,356	1,660,576

Local Streets and Roads - Projected FY2021-22 Revenues

Based on State Dept of Finance statewide revenue projections

Estimated May 2022

	Highway Users Tax Acct (HUTA) ⁽¹⁾ Streets & Highways Code					TOTAL HUTA	Road Mntnc Rehab Acct	TOTAL
	Sec2103 ⁽⁵⁾	Sec2105 ⁽³⁾	Sec2106 ⁽³⁾	Sec2107 ⁽³⁾	Sec2107.5 ⁽⁴⁾			
SACRAMENTO COUNTY								
CITRUS HEIGHTS	682,231	504,199	328,593	686,500	7,500	2,209,023	1,739,840	3,948,863
ELK GROVE	1,383,900	1,022,765	661,611	1,392,561	10,000	4,470,837	3,529,254	8,000,091
FOLSOM	639,437	472,573	308,282	643,439	7,500	2,071,232	1,630,708	3,701,940
GALT	202,903	149,955	101,100	204,173	6,000	664,131	517,449	1,181,579
ISLETON	6,464	4,777	7,868	6,505	1,000	26,614	16,485	43,099
RANCHO CORDOVA	618,919	457,409	298,544	622,792	7,500	2,005,164	1,578,380	3,583,544
SACRAMENTO	4,006,423	2,960,928	1,906,282	4,031,496	20,000	12,925,128	10,217,270	23,142,398
SAN BENITO COUNTY								
HOLLISTER	321,541	237,633	140,617	323,553	6,000	1,029,344	820,000	1,849,344
SAN JUAN BAUTISTA	16,712	12,351	11,859	16,816	1,000	58,738	42,619	101,357
SAN BERNARDINO COUNTY								
ADELANTO	273,068	201,810	126,176	274,777	6,000	881,831	696,384	1,578,214
APPLE VALLEY	577,648	426,908	261,560	581,263	7,500	1,854,879	1,473,131	3,328,010
BARSTOW	188,056	138,982	88,389	189,233	5,000	609,660	479,585	1,089,245
BIG BEAR LAKE	40,315	29,795	22,720	416,093	2,000	510,922	102,812	613,734
CHINO	685,129	506,341	309,334	689,416	7,500	2,197,720	1,747,231	3,944,951
CHINO HILLS	642,219	474,629	290,261	646,238	7,500	2,060,846	1,637,801	3,698,647
COLTON	421,081	311,198	191,967	423,716	7,500	1,355,462	1,073,850	2,429,312
FONTANA	1,662,197	1,228,439	743,632	1,672,599	10,000	5,316,867	4,238,972	9,555,840
GRAND TERRACE	96,332	71,193	47,619	96,935	3,000	315,078	245,667	560,745
HESPERIA	746,265	551,524	336,508	750,936	7,500	2,392,733	1,903,143	4,295,876
HIGHLAND	427,778	316,147	194,944	430,455	7,500	1,376,824	1,090,929	2,467,754
LOMA LINDA	193,417	142,944	90,772	194,627	5,000	626,760	493,256	1,120,017
MONTCLAIR	307,649	227,367	141,547	309,574	6,000	992,137	784,574	1,776,711
NEEDLES	41,589	30,736	23,286	41,849	2,000	139,461	106,061	245,522
ONTARIO	1,414,045	1,045,043	633,331	1,422,895	10,000	4,525,314	3,606,130	8,131,444
RANCHO CUCAMONGA	1,360,647	1,005,580	609,596	1,369,162	10,000	4,354,984	3,469,952	7,824,936
REDLANDS	552,817	408,557	250,522	556,277	7,500	1,775,674	1,409,807	3,185,481
RIALTO	796,875	588,926	359,004	801,862	10,000	2,556,667	2,032,208	4,588,875
SAN BERNARDINO	1,680,431	1,241,915	751,737	1,690,948	10,000	5,375,032	4,285,475	9,660,506
TWENTYNINE PALMS	232,823	172,067	108,288	234,280	6,000	753,457	593,750	1,347,207
UPLAND	609,992	450,811	275,936	613,809	7,500	1,958,048	1,555,615	3,513,663
VICTORVILLE	988,023	730,194	443,968	994,206	10,000	3,166,390	2,519,679	5,686,069
YUCAIPA	432,238	319,443	196,926	434,943	7,500	1,391,050	1,102,302	2,493,352
YUCCA VALLEY	173,489	128,216	81,914	174,574	5,000	563,193	442,435	1,005,628

Local Streets and Roads - Projected FY2021-22 Revenues

Based on State Dept of Finance statewide revenue projections

Estimated May 2022

	Highway Users Tax Acct (HUTA) ⁽¹⁾ Streets & Highways Code					TOTAL HUTA	Road Mntnc Rehab Acct	TOTAL
	Sec2103 ⁽⁵⁾	Sec2105 ⁽³⁾	Sec2106 ⁽³⁾	Sec2107 ⁽³⁾	Sec2107.5 ⁽⁴⁾			
SAN DIEGO COUNTY								
CARLSBAD	897,363	663,192	415,139	902,979	10,000	2,888,673	2,288,475	5,177,148
CHULA VISTA	2,132,279	1,575,851	979,832	2,145,623	10,000	6,843,585	5,437,786	12,281,372
CORONADO	191,879	141,807	92,541	193,079	5,000	624,306	489,333	1,113,639
DEL MAR	33,082	24,449	19,927	33,289	1,000	111,747	84,366	196,112
EL CAJON	802,127	592,808	371,590	807,147	10,000	2,583,672	2,045,602	4,629,274
ENCINITAS	483,942	357,655	226,094	486,971	7,500	1,562,162	1,234,161	2,796,324
ESCONDIDO	1,178,511	870,973	543,701	1,185,886	10,000	3,789,071	3,005,465	6,794,536
TIMPERIAL BEACH	215,785	159,475	103,472	217,135	6,000	701,867	550,299	1,252,166
LA MESA	462,880	342,089	216,462	465,777	7,500	1,494,708	1,180,447	2,675,155
LEMON GROVE	204,682	151,270	98,396	205,963	6,000	666,311	521,986	1,188,297
NATIONAL CITY	487,516	360,297	227,728	490,567	7,500	1,573,608	1,243,275	2,816,883
OCEANSIDE	1,373,256	1,014,899	632,752	1,381,851	10,000	4,412,758	3,502,110	7,914,867
POWAY	380,199	280,984	178,654	382,578	6,000	1,228,416	969,592	2,198,008
SAN DIEGO	10,962,758	8,101,975	5,017,768	11,031,366	20,000	35,133,867	27,957,476	63,091,343
SAN MARCOS	748,200	552,954	346,931	752,882	7,500	2,408,467	1,908,077	4,316,544
SANTEE	441,297	326,138	206,593	444,058	7,500	1,425,586	1,125,405	2,550,991
SOLANA BEACH	107,426	79,393	53,923	108,099	3,000	351,841	273,961	625,801
VISTA	802,321	592,951	371,679	807,342	10,000	2,584,294	2,046,097	4,630,391
SAN FRANCISCO COUNTY								
SAN FRANCISCO	6,798,223	5,024,194	1,883,479	6,840,768	20,000	20,566,664	17,336,982	37,903,646
SAN JOAQUIN COUNTY								
ESCALON	58,278	43,070	29,143	58,642	2,000	191,133	148,621	339,754
LATHROP	221,449	163,661	97,302	222,834	6,000	711,246	564,743	1,275,989
LODI	534,148	394,759	227,921	537,491	7,500	1,701,818	1,362,196	3,064,014
MANTECA	678,408	501,374	288,180	682,654	7,500	2,158,117	1,730,092	3,888,209
RIPON	126,578	93,547	57,673	127,370	4,000	409,167	322,801	731,968
STOCKTON	2,492,985	1,842,428	1,046,153	2,508,586	10,000	7,900,152	6,357,666	14,257,818
TRACY	766,062	566,154	324,794	770,856	7,500	2,435,366	1,953,628	4,388,993
SAN LUIS OBISPO COUNTY								
ARROYO GRANDE	136,390	100,799	75,873	137,244	4,000	454,306	347,825	802,131
ATASCADERO	230,150	170,091	124,732	231,591	6,000	762,564	586,934	1,349,499
EL PASO DE ROBLES	241,416	178,417	130,603	242,927	6,000	799,362	615,664	1,415,026
GROVER BEACH	102,213	75,540	58,064	102,853	3,000	341,669	260,666	602,335
MORRO BAY	79,511	58,762	46,234	80,009	3,000	267,516	202,771	470,287
PISMO BEACH	62,994	46,555	37,626	63,388	2,000	212,563	160,648	373,210
SAN LUIS OBISPO	357,839	264,459	191,271	360,078	6,000	1,179,647	912,569	2,092,216

Local Streets and Roads - Projected FY2021-22 Revenues

Based on State Dept of Finance statewide revenue projections

Estimated May 2022

	Highway Users Tax Acct (HUTA) ⁽¹⁾ Streets & Highways Code					TOTAL HUTA	Road Mntnc Rehab Acct	TOTAL
	Sec2103 ⁽⁵⁾	Sec2105 ⁽³⁾	Sec2106 ⁽³⁾	Sec2107 ⁽³⁾	Sec2107.5 ⁽⁴⁾			
SAN MATEO COUNTY								
ATHERTON	53,717	39,699	28,713	54,053	2,000	178,182	136,990	315,172
BELMONT	205,654	151,987	96,348	206,941	6,000	666,930	524,462	1,191,392
BRISBANE	35,576	26,292	20,637	35,798	1,000	119,303	90,726	210,029
BURLINGAME	231,106	170,798	107,678	232,552	6,000	748,134	589,371	1,337,506
COLMA	12,889	9,526	10,538	12,970	1,000	46,923	32,871	79,793
DALY CITY	843,739	623,561	380,397	849,019	10,000	2,706,717	2,151,723	4,858,439
EAST PALO ALTO	235,799	174,266	109,767	237,274	6,000	763,106	601,339	1,364,445
FOSTER CITY	255,160	188,575	118,386	256,756	6,000	824,877	650,714	1,475,591
HALF MOON BAY	95,632	70,677	47,371	96,231	3,000	312,911	243,884	556,795
HILLSBOROUGH	88,500	65,406	44,197	89,054	3,000	290,156	225,695	515,852
MENLO PARK	270,566	199,961	125,245	272,259	6,000	874,031	690,004	1,564,035
MILLBRAE	174,879	129,244	82,649	175,974	5,000	567,746	445,981	1,013,727
PACIFICA	294,379	217,559	135,845	296,221	6,000	950,005	750,732	1,700,737
PORTOLA VALLEY	35,428	26,183	20,571	35,650	1,000	118,832	90,349	209,181
REDWOOD CITY	661,805	489,104	299,408	665,947	7,500	2,123,764	1,687,751	3,811,515
SAN BRUNO	349,122	258,017	160,214	351,307	6,000	1,124,659	890,338	2,014,997
SAN CARLOS	231,634	171,188	107,914	233,084	6,000	749,820	590,719	1,340,538
SAN MATEO	800,588	591,671	361,188	805,599	10,000	2,569,046	2,041,679	4,610,725
SOUTH SAN FRANCISCO	521,593	385,480	236,991	524,857	7,500	1,676,421	1,330,177	3,006,598
WOODSIDE	43,726	32,315	24,265	43,999	2,000	146,305	111,510	257,815
SANTA BARBARA COUNTY								
BUELLTON	42,226	31,207	20,355	42,490	2,000	138,279	107,686	245,965
CARPINTERIA	102,524	75,770	42,568	103,165	3,000	327,027	261,459	588,485
GOLETA	251,252	185,686	97,356	252,824	6,000	793,118	640,748	1,433,866
GUADALUPE	64,843	47,922	28,687	65,248	2,000	208,699	165,363	374,063
LOMPOC	330,141	243,989	126,417	332,207	6,000	1,038,755	841,934	1,880,689
SANTA BARBARA	722,973	534,310	271,129	727,498	7,500	2,263,409	1,843,742	4,107,151
SANTA MARIA	834,773	616,935	312,314	839,998	10,000	2,614,020	2,128,858	4,742,878
SOLVANG	42,824	31,649	20,576	43,092	2,000	140,142	109,212	249,354

Local Streets and Roads - Projected FY2021-22 Revenues

Based on State Dept of Finance statewide revenue projections

Estimated May 2022

	Highway Users Tax Acct (HUTA) ⁽¹⁾ Streets & Highways Code					TOTAL HUTA	Road Mntnc Rehab Acct	TOTAL
	Sec2103 ⁽⁵⁾	Sec2105 ⁽³⁾	Sec2106 ⁽³⁾	Sec2107 ⁽³⁾	Sec2107.5 ⁽⁴⁾			
SANTA CLARA COUNTY								
CAMPBELL	322,683	238,477	141,388	324,702	6,000	1,033,250	822,913	1,856,163
CUPERTINO	455,717	336,795	197,700	458,569	7,500	1,456,281	1,162,179	2,618,459
GILROY	439,735	324,984	190,936	442,487	7,500	1,405,642	1,121,422	2,527,064
LOS ALTOS	237,042	175,184	105,137	238,525	6,000	761,889	604,509	1,366,397
LOS ALTOS HILLS	65,184	48,174	32,392	65,592	2,000	213,343	166,235	379,578
LOS GATOS	239,574	177,056	106,209	241,074	6,000	769,914	610,968	1,380,882
MILPITAS	587,849	434,447	253,631	591,528	7,500	1,874,955	1,499,146	3,374,102
MONTE SERENO	28,001	20,694	16,652	28,176	1,000	94,522	71,408	165,930
MORGAN HILL	368,063	272,015	160,598	370,367	6,000	1,177,043	938,643	2,115,686
MOUNTAIN VIEW	643,408	475,507	277,148	647,434	7,500	2,050,997	1,640,832	3,691,829
PALO ALTO	525,648	388,478	227,302	528,938	7,500	1,677,865	1,340,520	3,018,385
SAN JOSE	8,000,694	5,912,875	3,391,415	8,050,765	20,000	25,375,749	20,403,552	45,779,301
SANTA CLARA	1,015,806	750,727	434,781	1,022,163	10,000	3,233,477	2,590,532	5,824,008
SARATOGA	237,321	175,391	105,256	238,807	6,000	762,775	605,222	1,367,997
SUNNYVALE	1,195,129	883,255	510,687	1,202,609	10,000	3,801,680	3,047,846	6,849,526
SANTA CRUZ COUNTY								
CAPITOLA	78,400	57,941	37,511	78,891	3,000	255,743	199,938	455,681
SANTA CRUZ	465,739	344,202	199,120	468,654	7,500	1,485,215	1,187,738	2,672,953
SCOTTS VALLEY	91,328	67,496	42,905	91,900	3,000	296,629	232,907	529,536
WATSONVILLE	399,078	294,937	171,307	401,576	7,500	1,274,398	1,017,739	2,292,137
SHASTA COUNTY								
ANDERSON	83,147	61,449	52,364	83,667	3,000	283,628	212,044	495,672
REDDING	712,562	526,616	412,421	717,022	7,500	2,376,121	1,817,192	4,193,313
SHASTA LAKE	82,798	61,191	52,164	83,316	3,000	282,469	211,152	493,621
SIERRA COUNTY								
LOYALTON	5,975	4,415	6,138	22,267	1,000	39,795	15,237	55,032
SISKIYOU COUNTY								
DORRIS	7,699	5,690	8,831	7,748	1,000	30,968	19,635	50,603
DUNSMUIR	12,819	9,474	11,512	38,758	1,000	73,563	32,692	106,255
ETNA	5,773	4,266	7,822	5,809	1,000	24,670	14,721	39,391
FORT JONES	5,516	4,077	7,688	5,551	1,000	23,832	14,068	37,899
MONTAGUE	11,211	8,286	10,670	11,281	1,000	42,448	28,591	71,038
MOUNT SHASTA	26,478	19,568	18,663	95,080	1,000	160,788	67,524	228,313
TULELAKE	7,847	5,799	8,908	7,896	1,000	31,451	20,012	51,462
WEED	23,052	17,036	16,869	23,196	1,000	81,152	58,787	139,939
YREKA	60,329	44,586	36,386	61,372	2,000	204,672	153,852	358,524

Local Streets and Roads - Projected FY2021-22 Revenues

Based on State Dept of Finance statewide revenue projections

Estimated May 2022

	Highway Users Tax Acct (HUTA) ⁽¹⁾ Streets & Highways Code					TOTAL HUTA	Road Mntnc Rehab Acct	TOTAL
	Sec2103 ⁽⁵⁾	Sec2105 ⁽³⁾	Sec2106 ⁽³⁾	Sec2107 ⁽³⁾	Sec2107.5 ⁽⁴⁾			
SOLANO COUNTY								
BENICIA	210,634	155,668	104,833	211,952	6,000	689,086	537,163	1,226,249
DIXON	156,917	115,969	79,322	157,899	4,000	514,106	400,173	914,279
FAIRFIELD	916,817	677,569	440,209	922,555	10,000	2,967,151	2,338,088	5,305,239
RIO VISTA	78,315	57,878	41,993	78,805	2,000	258,990	199,720	458,710
SUISUN CITY	224,393	165,837	111,367	225,797	6,000	733,395	572,253	1,305,647
VACAVILLE	761,711	562,939	366,547	766,478	7,500	2,465,174	1,942,532	4,407,706
VALLEJO	915,582	676,656	439,622	921,312	10,000	2,963,173	2,334,938	5,298,110
SONOMA COUNTY								
CLOVERDALE	70,957	52,441	37,291	71,401	2,000	234,090	180,956	415,046
COTATI	57,718	42,656	31,229	58,079	2,000	191,683	147,194	338,877
HEALDSBURG	91,678	67,754	46,779	92,252	3,000	301,462	233,799	535,261
PETALUMA	474,736	350,851	222,179	477,707	7,500	1,532,973	1,210,682	2,743,655
ROHNERT PARK	330,071	243,938	155,938	332,137	6,000	1,068,084	841,755	1,909,839
SANTA ROSA	1,334,076	985,942	615,666	1,342,425	10,000	4,288,109	3,402,190	7,690,299
SEBASTOPOL	59,490	43,966	32,040	59,862	2,000	197,357	151,712	349,069
SONOMA	84,872	62,724	43,662	85,403	3,000	279,662	216,442	496,104
WINDSOR	216,414	159,940	103,895	217,768	6,000	704,017	551,904	1,255,921
STANISLAUS COUNTY								
CERES	379,927	280,783	164,091	382,305	6,000	1,213,106	968,898	2,182,004
HUGHSON	56,739	41,933	28,589	57,094	2,000	186,355	144,698	331,053
MODESTO	1,703,763	1,259,158	719,132	1,714,425	10,000	5,406,478	4,344,974	9,751,452
NEWMAN	92,936	68,684	43,765	93,518	3,000	301,904	237,009	538,913
OAKDALE	180,535	133,424	80,493	181,665	5,000	581,117	460,406	1,041,523
PATTERSON	181,056	133,809	80,711	182,189	5,000	582,764	461,733	1,044,497
RIVERBANK	195,701	144,632	86,851	196,926	6,000	630,110	499,081	1,129,191
TURLOCK	581,300	429,607	248,520	584,938	7,500	1,851,864	1,482,444	3,334,308
WATERFORD	69,489	51,355	33,934	69,924	2,000	226,702	177,212	403,914
SUTTER COUNTY								
LIVE OAK	72,775	53,784	34,793	73,231	2,000	236,582	185,593	422,175
YUBA CITY	549,881	406,387	231,420	553,322	7,500	1,748,509	1,402,318	3,150,827
TEHAMA COUNTY								
CORNING	59,544	44,006	30,206	59,917	2,000	195,672	151,850	347,522
RED BLUFF	110,884	81,948	52,111	111,578	3,000	359,520	282,778	642,298
TEHAMA	3,481	2,572	6,285	3,502	1,000	16,841	8,876	25,717
TRINITY COUNTY								

Local Streets and Roads - Projected FY2021-22 Revenues

Based on State Dept of Finance statewide revenue projections

Estimated May 2022

	Highway Users Tax Acct (HUTA) ⁽¹⁾ Streets & Highways Code					TOTAL HUTA	Road Mntnc Rehab Acct	TOTAL
	Sec2103 ⁽⁵⁾	Sec2105 ⁽³⁾	Sec2106 ⁽³⁾	Sec2107 ⁽³⁾	Sec2107.5 ⁽⁴⁾			
TULARE COUNTY								
DINUBA	206,019	152,257	85,307	207,308	6,000	656,891	525,394	1,182,284
EXETER	85,439	63,143	38,187	85,974	3,000	275,743	217,889	493,632
FARMERSVILLE	88,003	65,038	39,189	88,554	3,000	283,784	224,427	508,211
LINDSAY	101,700	75,161	44,542	102,337	3,000	326,740	259,358	586,098
PORTERVILLE	462,825	342,049	185,660	465,722	7,500	1,463,756	1,180,308	2,644,064
TULARE	537,994	397,602	215,033	541,360	7,500	1,699,489	1,372,003	3,071,492
VISALIA	1,081,907	799,578	427,580	1,088,678	10,000	3,407,744	2,759,105	6,166,848
WOODLAKE	62,574	46,245	29,252	62,966	2,000	203,037	159,578	362,615
TUOLUMNE COUNTY								
SONORA	38,093	28,152	30,724	38,331	1,000	136,300	97,145	233,446
VENTURA COUNTY								
CAMARILLO	541,583	400,254	251,890	544,972	7,500	1,746,199	1,381,157	3,127,356
FILLMORE	122,809	90,762	60,830	123,578	4,000	401,979	313,191	715,171
MOORPARK	279,547	206,598	132,340	281,297	6,000	905,782	712,908	1,618,691
OJAI	57,967	42,840	31,247	58,330	2,000	192,383	147,828	340,211
OXNARD	1,590,183	1,175,217	730,299	1,600,135	10,000	5,105,835	4,055,321	9,161,156
PORT HUENEME	181,600	134,210	87,652	182,736	5,000	591,199	463,120	1,054,319
SAN BUENAVENTURA	826,911	611,125	382,067	832,086	10,000	2,662,188	2,108,807	4,770,994
SANTA PAULA	238,448	176,224	113,589	239,940	6,000	774,200	608,095	1,382,295
SIMI VALLEY	967,030	714,679	445,994	973,082	10,000	3,110,786	2,466,143	5,576,928
THOUSAND OAKS	984,239	727,397	453,845	990,399	10,000	3,165,881	2,510,029	5,675,911
YOLO COUNTY								
DAVIS	538,374	397,883	238,055	541,744	7,500	1,723,555	1,372,974	3,096,530
WEST SACRAMENTO	419,286	309,872	186,459	421,910	7,500	1,345,027	1,069,273	2,414,300
WINTERS	59,187	43,742	30,443	59,557	2,000	194,928	150,939	345,867
WOODLAND	473,757	350,128	210,059	476,722	7,500	1,518,165	1,208,186	2,726,351
YUBA COUNTY								
MARYSVILLE	94,793	70,057	42,012	95,387	3,000	305,249	241,744	546,993
WHEATLAND	28,047	20,728	15,810	28,223	1,000	93,808	71,527	165,335
Statewide Total	\$ 257,035,000	\$ 189,960,500	\$ 110,481,899	\$ 263,867,500	\$ 2,709,500	\$ 824,054,399	\$ 655,496,500	\$ 1,479,550,899

Notes:

1. The Highway Users Tax is also known as the "Motor Vehicle Fuel Tax", the "Gasoline Excise Tax" and "Article XIX Revenues."
2. Rolling Hills has no public streets and is therefore not eligible for HUTA or RMRA allocations.
3. Str&HwysCode §§ 2103, 2105, 2106, 2107 and RMRA amounts are paid monthly. Includes special payments for snow removal.
4. Str&HwysCode § 2107.5 amounts are typically paid by the State Controller once per year in July.
5. Str&HwysCode § 2103 allocations replace the former Prop42 TCRF revenues. Previously adjusted annually by the BOE until July 2019.

Local Streets and Roads - Projected FY2022-23 Revenues

Based on State Dept of Finance statewide revenue projections

Estimated May 2022

	Highway Users Tax Acct (HUTA) ⁽¹⁾ Streets & Highways Code					TOTAL HUTA	Road Mntnc Rehab Acct	TOTAL
	Sec2103 ⁽⁵⁾	Sec2105 ⁽³⁾	Sec2106 ⁽³⁾	Sec2107 ⁽³⁾	Sec2107.5 ⁽⁴⁾			
ALAMEDA COUNTY								
ALAMEDA	727,028	503,692	283,502	687,450	7,500	2,209,173	1,791,105	4,000,278
ALBANY	166,638	115,449	68,680	157,567	4,000	512,334	410,530	922,864
BERKELEY	1,049,510	727,111	407,124	992,376	10,000	3,186,120	2,585,570	5,771,690
DUBLIN	581,513	402,878	227,720	549,856	7,500	1,769,467	1,432,614	3,202,081
EMERYVILLE	113,130	78,377	48,168	106,971	3,000	349,646	278,706	628,352
FREMONT	2,105,464	1,458,686	811,918	1,990,846	10,000	6,376,915	5,187,017	11,563,932
HAYWARD	1,420,988	984,474	549,528	1,343,632	10,000	4,308,621	3,500,742	7,809,364
LIVERMORE	819,898	568,033	319,103	775,264	7,500	2,489,798	2,019,898	4,509,696
NEWARK	439,171	304,262	173,154	415,263	6,000	1,337,849	1,081,940	2,419,789
OAKLAND	3,914,631	2,712,094	1,505,452	3,701,525	10,000	11,843,702	9,644,076	21,487,778
PIEDMONT	101,534	70,344	43,723	96,007	3,000	314,608	250,140	564,748
PLEASANTON	704,440	488,043	274,843	666,092	7,500	2,140,918	1,735,457	3,876,375
SAN LEANDRO	784,600	543,578	305,572	741,888	7,500	2,383,138	1,932,938	4,316,076
UNION CITY	654,176	453,220	255,575	618,564	7,500	1,989,035	1,611,627	3,600,662
ALPINE COUNTY								
AMADOR COUNTY								
AMADOR	1,663	1,152	5,647	1,572	1,000	11,035	4,097	15,131
IONE	71,171	49,308	41,062	67,297	2,000	230,838	175,337	406,175
JACKSON	41,806	28,963	26,100	39,530	1,000	137,399	102,992	240,391
PLYMOUTH	9,033	6,258	9,403	8,542	1,000	34,236	22,255	56,491
SUTTER CREEK	22,480	15,575	16,254	21,257	1,000	76,565	55,382	131,948
BUTTE COUNTY								
BIGGS	15,523	10,755	10,591	14,678	1,000	52,547	38,243	90,790
CHICO	1,002,131	694,286	378,674	947,577	10,000	3,032,669	2,468,848	5,501,517
GRIDLEY	59,180	41,001	26,879	55,959	2,000	185,019	145,797	330,816
OROVILLE	160,562	111,239	64,702	151,821	4,000	492,325	395,560	887,885
PARADISE	235,661	163,268	92,720	255,248	6,000	752,898	580,575	1,333,473
CALAVERAS COUNTY								
ANGELS CAMP	36,296	25,146	29,397	34,320	1,000	126,158	89,418	215,576
COLUSA COUNTY								
COLUSA	56,340	39,033	18,942	53,273	2,000	169,588	138,799	308,388
WILLIAMS	49,320	34,169	17,180	46,635	2,000	149,305	121,505	270,809

Local Streets and Roads - Projected FY2022-23 Revenues

Based on State Dept of Finance statewide revenue projections

Estimated May 2022

	Highway Users Tax Acct (HUTA) ⁽¹⁾ Streets & Highways Code					TOTAL HUTA	Road Mntnc Rehab Acct	TOTAL
	Sec2103 ⁽⁵⁾	Sec2105 ⁽³⁾	Sec2106 ⁽³⁾	Sec2107 ⁽³⁾	Sec2107.5 ⁽⁴⁾			
CONTRA COSTA COUNTY								
ANTIOCH	1,014,338	702,743	422,353	959,119	10,000	3,108,552	2,498,920	5,607,472
BRENTWOOD	594,115	411,609	249,368	561,772	7,500	1,824,364	1,463,660	3,288,024
CLAYTON	101,283	70,170	46,493	95,769	3,000	316,715	249,520	566,235
CONCORD	1,161,974	805,027	483,127	1,098,718	10,000	3,558,847	2,862,637	6,421,484
DANVILLE	394,650	273,418	167,258	373,166	6,000	1,214,492	972,260	2,186,752
EL CERRITO	223,329	154,725	96,734	211,171	5,000	690,958	550,193	1,241,151
HERCULES	232,479	161,064	100,500	219,824	6,000	719,867	572,736	1,292,603
LAFAYETTE	227,931	157,913	98,628	215,523	6,000	705,995	561,531	1,267,526
MARTINEZ	331,021	229,334	141,065	313,000	6,000	1,020,420	815,502	1,835,922
MORAGA	151,187	104,744	67,036	142,957	4,000	469,924	372,464	842,388
OAKLEY	385,563	267,122	163,517	364,574	6,000	1,186,776	949,872	2,136,648
ORINDA	171,483	118,805	75,391	162,148	4,000	531,827	422,466	954,293
PINOLE	174,099	120,617	76,468	164,621	4,000	539,805	428,910	968,715
PITTSBURG	669,628	463,924	280,453	633,174	7,500	2,054,679	1,649,693	3,704,372
PLEASANT HILL	306,806	212,558	131,097	290,104	6,000	946,564	755,845	1,702,409
RICHMOND	989,907	685,817	412,296	936,018	10,000	3,034,038	2,438,732	5,472,770
SAN PABLO	279,013	193,303	119,656	263,824	6,000	861,796	687,376	1,549,171
SAN RAMON	753,805	522,243	315,104	712,769	7,500	2,311,422	1,857,073	4,168,495
WALNUT CREEK	641,035	444,115	268,682	606,138	7,500	1,967,471	1,579,252	3,546,723
DEL NORTE COUNTY								
CRESCENT CITY	68,699	47,596	25,788	64,959	2,000	209,042	169,248	378,290
EL DORADO COUNTY								
PLACERVILLE	97,867	67,803	63,681	92,539	3,000	324,891	241,105	565,996
SOUTH LAKE TAHOE	210,314	145,707	131,334	1,244,053	5,000	1,736,407	518,128	2,254,536

Local Streets and Roads - Projected FY2022-23 Revenues

Based on State Dept of Finance statewide revenue projections

Estimated May 2022

	Highway Users Tax Acct (HUTA) ⁽¹⁾ Streets & Highways Code					TOTAL HUTA	Road Mntnc Rehab Acct	TOTAL
	Sec2103 ⁽⁵⁾	Sec2105 ⁽³⁾	Sec2106 ⁽³⁾	Sec2107 ⁽³⁾	Sec2107.5 ⁽⁴⁾			
FRESNO COUNTY								
CLOVIS	1,095,109	758,702	375,449	1,035,493	10,000	3,274,752	2,697,907	5,972,659
COALINGA	162,576	112,634	59,825	153,725	4,000	492,760	400,521	893,280
FIREBAUGH	73,041	50,603	29,521	69,065	2,000	224,230	179,943	404,173
FOWLER	59,333	41,107	24,882	56,103	2,000	183,425	146,173	329,598
FRESNO	4,914,659	3,404,923	1,668,207	4,647,113	20,000	14,654,902	12,107,742	26,762,644
HURON	66,551	46,107	27,325	62,928	2,000	204,911	163,955	368,866
KERMAN	144,877	100,372	53,835	136,990	4,000	440,075	356,919	796,994
KINGSBURG	117,606	81,479	44,605	111,204	3,000	357,893	289,734	647,627
MENDOTA	111,889	77,518	42,670	105,798	3,000	340,875	275,650	616,525
ORANGE COVE	86,119	59,664	33,948	81,431	2,000	263,162	212,163	475,325
PARLIER	142,270	98,566	52,953	134,525	4,000	432,315	350,497	782,812
REEDLEY	234,484	162,453	84,163	221,719	6,000	708,818	577,674	1,286,492
SANGER	245,863	170,336	88,014	232,479	6,000	742,693	605,708	1,348,401
SAN JOAQUIN	37,257	25,812	17,410	35,229	1,000	116,709	91,787	208,497
SELMA	220,102	152,489	79,295	208,120	5,000	665,007	542,243	1,207,250
GLENN COUNTY								
ORLAND	76,645	53,101	27,751	72,473	2,000	231,969	188,823	420,792
WILLOWS	56,026	38,815	21,576	52,976	2,000	171,392	138,024	309,417
HUMBOLDT COUNTY								
ARCATA	154,881	107,303	76,558	146,450	4,000	489,193	381,565	870,758
BLUE LAKE	11,344	7,859	10,056	10,726	1,000	40,984	27,946	68,930
EUREKA	244,407	169,328	118,037	231,102	6,000	768,873	602,121	1,370,994
FERNDALE	12,323	8,538	10,510	11,652	1,000	44,023	30,360	74,382
FORTUNA	107,197	74,267	54,466	101,362	3,000	340,292	264,091	604,383
RIO DELL	30,273	20,974	18,826	28,625	1,000	99,698	74,581	174,280
TRINIDAD	3,299	2,285	6,328	3,119	1,000	16,032	8,127	24,159
IMPERIAL COUNTY								
BRAWLEY	245,621	170,168	101,380	232,249	6,000	755,419	605,110	1,360,529
CALEXICO	363,901	252,114	147,889	344,090	6,000	1,113,994	896,505	2,010,499
CALIPATRIA	69,257	47,982	32,032	65,486	2,000	216,757	170,620	387,378
EL CENTRO	404,457	280,212	163,836	382,439	6,000	1,236,944	996,419	2,233,363
HOLTVILLE	56,052	38,834	26,840	53,001	2,000	176,728	138,091	314,818
IMPERIAL	182,368	126,347	76,509	172,440	4,000	561,664	449,282	1,010,946
WESTMORLAND	20,719	14,354	12,947	19,591	1,000	68,610	51,042	119,652
INYO COUNTY								
BISHOP	35,271	24,436	19,535	33,351	1,000	113,593	86,894	200,486

Local Streets and Roads - Projected FY2022-23 Revenues

Based on State Dept of Finance statewide revenue projections

Estimated May 2022

	Highway Users Tax Acct (HUTA) ⁽¹⁾ Streets & Highways Code					TOTAL HUTA	Road Mntnc Rehab Acct	TOTAL
	Sec2103 ⁽⁵⁾	Sec2105 ⁽³⁾	Sec2106 ⁽³⁾	Sec2107 ⁽³⁾	Sec2107.5 ⁽⁴⁾			
KERN COUNTY								
ARVIN	197,874	137,089	58,287	187,102	5,000	585,351	487,481	1,072,832
BAKERSFIELD	3,571,970	2,474,695	970,336	3,377,518	10,000	10,404,520	8,799,898	19,204,418
CALIFORNIA CITY	126,918	87,930	39,107	120,009	3,000	376,964	312,675	689,639
DELANO	476,761	330,304	133,673	450,807	7,500	1,399,044	1,174,546	2,573,591
MARICOPA	10,373	7,186	7,604	9,808	1,000	35,971	25,554	61,525
MCFARLAND	126,235	87,457	38,922	119,363	3,000	374,977	310,992	685,969
RIDGECREST	265,980	184,273	76,697	251,500	6,000	784,450	655,267	1,439,716
SHAFTER	183,797	127,337	54,482	173,792	5,000	544,408	452,803	997,211
TAFT	83,836	58,082	27,462	79,272	2,000	250,652	206,538	457,190
TEHACHAPI	129,561	89,761	39,821	122,508	3,000	384,651	319,185	703,836
WASCO	241,027	166,986	69,952	227,906	6,000	711,872	593,795	1,305,667
KINGS COUNTY								
AVENAL	139,367	96,555	43,497	131,780	4,000	415,199	343,345	758,544
CORCORAN	223,032	154,519	66,727	210,891	5,000	660,169	549,462	1,209,632
HANFORD	539,141	373,522	154,498	509,791	7,500	1,584,452	1,328,227	2,912,679
LEMOORE	240,974	166,949	71,709	227,855	6,000	713,486	593,662	1,307,148
LAKE COUNTY								
CLEARLAKE	137,075	94,967	50,380	129,613	4,000	416,035	337,698	753,732
LAKEPORT	42,911	29,729	19,069	40,575	1,000	133,284	105,716	239,000
LASSEN COUNTY								
SUSANVILLE	161,317	111,762	49,223	235,122	4,000	561,425	397,421	958,846
LOS ANGELES COUNTY								
AGOURA HILLS	183,878	127,393	75,652	173,868	5,000	565,791	453,002	1,018,793
ALHAMBRA	775,333	537,158	303,550	733,125	7,500	2,356,666	1,910,108	4,266,773
ARCADIA	518,279	359,068	204,502	490,064	7,500	1,579,414	1,276,830	2,856,244
ARTESIA	148,509	102,888	62,023	140,424	4,000	457,844	365,865	823,709
AVALON	35,711	24,741	18,560	33,767	1,000	113,780	87,979	201,759
AZUSA	445,714	308,795	176,542	421,450	6,000	1,358,502	1,098,061	2,456,562
BALDWIN PARK	682,544	472,873	267,797	645,387	7,500	2,076,102	1,681,514	3,757,616
BELL	326,454	226,171	130,589	308,683	6,000	997,897	804,252	1,802,149
BELLFLOWER	696,234	482,357	273,072	658,332	7,500	2,117,494	1,715,240	3,832,734
BELL GARDENS	379,613	262,999	151,072	358,947	6,000	1,158,631	935,213	2,093,844
BEVERLY HILLS	306,590	212,408	122,935	289,900	6,000	937,832	755,314	1,693,146
BRADBURY	9,420	6,526	8,430	8,907	1,000	34,283	23,207	57,490
BURBANK	934,529	647,450	364,891	883,654	10,000	2,840,524	2,302,302	5,142,827
CALABASAS	218,790	151,580	89,104	206,879	5,000	671,353	539,010	1,210,363
CARSON	824,374	571,134	322,447	779,497	7,500	2,504,952	2,030,926	4,535,878
CERRITOS	449,858	311,666	178,139	425,368	6,000	1,371,031	1,108,269	2,479,300
CLAREMONT	320,953	222,360	128,469	303,481	6,000	981,264	790,700	1,771,964
COMMERCE	115,260	79,853	49,212	108,985	3,000	356,310	283,954	640,264

Local Streets and Roads - Projected FY2022-23 Revenues

Based on State Dept of Finance statewide revenue projections

Estimated May 2022

	Highway Users Tax Acct (HUTA) ⁽¹⁾ Streets & Highways Code					TOTAL HUTA	Road Mntnc Rehab Acct	TOTAL
	Sec2103 ⁽⁵⁾	Sec2105 ⁽³⁾	Sec2106 ⁽³⁾	Sec2107 ⁽³⁾	Sec2107.5 ⁽⁴⁾			
COMPTON	878,854	608,878	343,439	831,010	7,500	2,669,681	2,165,142	4,834,822
COVINA	438,937	304,100	173,931	415,042	6,000	1,338,009	1,081,364	2,419,373
CUDAHY	213,972	148,242	87,247	202,324	5,000	656,785	527,141	1,183,926
CULVER CITY	357,788	247,879	142,663	338,311	6,000	1,092,641	881,447	1,974,088
DIAMOND BAR	509,803	353,196	201,236	482,050	7,500	1,553,785	1,255,948	2,809,733
DOWNEY	1,004,666	696,042	391,916	949,974	10,000	3,052,599	2,475,093	5,527,691
DUARTE	192,867	133,620	79,115	182,368	5,000	592,970	475,146	1,068,116
EL MONTE	1,046,849	725,267	408,170	989,860	10,000	3,180,147	2,579,015	5,759,163
EL SEGUNDO	149,749	103,748	62,501	141,597	4,000	461,594	368,921	830,515
GARDENA	542,404	375,783	213,798	512,876	7,500	1,652,361	1,336,265	2,988,626
GLENDALE	1,832,168	1,269,344	710,768	1,732,428	10,000	5,554,708	4,513,725	10,068,433
GLENORA	463,269	320,957	183,306	438,049	7,500	1,413,081	1,141,308	2,554,389
HAWAIIAN GARDENS	130,037	90,091	54,906	122,958	3,000	400,992	320,359	721,351
HAWTHORNE	781,993	541,772	306,116	739,423	7,500	2,376,805	1,926,517	4,303,321
HERMOSA BEACH	175,330	121,471	72,358	165,786	4,000	538,944	431,943	970,888
HIDDEN HILLS	17,195	11,913	11,426	16,259	1,000	57,793	42,362	100,154
HUNTINGTON PARK	529,757	367,021	208,925	500,918	7,500	1,614,121	1,305,108	2,919,229
INDUSTRY	4,054	2,809	6,362	3,833	1,000	18,058	9,987	28,045
INGLEWOOD	990,168	685,998	386,330	936,264	10,000	3,008,760	2,439,375	5,448,134
IRWINDALE	12,952	8,974	9,791	12,247	1,000	44,964	31,910	76,874
LA CANADA FLINTRIDGE	181,982	126,079	74,921	172,075	5,000	560,056	448,330	1,008,386
LA HABRA HEIGHTS	48,996	33,945	23,679	46,329	2,000	154,950	120,708	275,658
LAKEWOOD	721,042	499,545	282,631	681,790	7,500	2,192,507	1,776,357	3,968,865
LA MIRADA	437,121	302,842	173,231	413,325	6,000	1,332,519	1,076,891	2,409,410
LANCASTER	1,450,497	1,004,918	563,703	1,371,534	10,000	4,400,654	3,573,442	7,974,095
LA PUENTE	360,323	249,635	143,639	340,708	6,000	1,100,306	887,691	1,987,997
LA VERNE	297,377	206,025	119,385	281,188	6,000	909,974	732,616	1,642,591
LAWNDALE	294,545	204,064	118,294	278,511	6,000	901,413	725,641	1,627,054
LOMITA	183,645	127,231	75,562	173,647	5,000	565,085	452,427	1,017,511
LONG BEACH	4,204,206	2,912,714	1,624,758	3,975,335	10,000	12,727,013	10,357,471	23,084,484
LOS ANGELES	35,265,072	24,431,982	13,593,085	33,345,297	20,000	106,655,436	86,878,948	193,534,384
LYNWOOD	628,119	435,167	246,826	593,925	7,500	1,911,536	1,547,431	3,458,967
MALIBU	113,660	78,745	48,595	107,473	3,000	351,472	280,012	631,485
MANHATTAN BEACH	315,812	218,798	126,488	298,620	6,000	965,718	778,034	1,743,751
MAYWOOD	248,713	172,311	100,634	235,173	6,000	762,830	612,728	1,375,558
MONROVIA	345,870	239,622	138,070	327,041	6,000	1,056,603	852,084	1,908,686
MONTEBELLO	565,504	391,787	222,699	534,719	7,500	1,722,210	1,393,175	3,115,385
MONTEREY PARK	542,727	376,007	213,923	513,182	7,500	1,653,340	1,337,062	2,990,402
NORWALK	948,730	657,290	370,363	897,083	10,000	2,883,467	2,337,290	5,220,757
PALMDALE	1,402,876	971,926	545,354	1,326,506	10,000	4,256,662	3,456,122	7,712,784
PALOS VERDES ESTATES	120,788	83,683	51,342	114,212	3,000	373,025	297,573	670,598
PARAMOUNT	496,167	343,749	195,982	469,156	7,500	1,512,555	1,222,356	2,734,910

Local Streets and Roads - Projected FY2022-23 Revenues

Based on State Dept of Finance statewide revenue projections

Estimated May 2022

	Highway Users Tax Acct (HUTA) ⁽¹⁾ Streets & Highways Code					TOTAL HUTA	Road Mntnc Rehab Acct	TOTAL
	Sec2103 ⁽⁵⁾	Sec2105 ⁽³⁾	Sec2106 ⁽³⁾	Sec2107 ⁽³⁾	Sec2107.5 ⁽⁴⁾			
PASADENA	1,306,087	904,870	508,060	1,234,986	10,000	3,964,003	3,217,674	7,181,677
PICO RIVERA	567,689	393,300	223,541	536,785	7,500	1,728,814	1,398,556	3,127,371
POMONA	1,360,136	942,315	528,885	1,286,092	10,000	4,127,428	3,350,827	7,478,254
RANCHO PALOS VERDES	374,309	259,325	149,028	353,933	6,000	1,142,595	922,148	2,064,743
REDONDO BEACH	599,966	415,663	235,978	567,305	7,500	1,826,412	1,478,076	3,304,488
ROLLING HILLS ⁽²⁾								
ROLLING HILLS ESTATES	72,789	50,429	32,847	68,827	2,000	226,892	179,323	406,215
ROSEMEAD	487,439	337,702	192,619	460,904	7,500	1,486,164	1,200,854	2,687,018
SAN DIMAS	305,637	211,748	122,568	288,999	6,000	934,952	752,967	1,687,918
SAN FERNANDO	222,502	154,152	90,534	210,389	6,000	683,577	548,156	1,231,733
SAN GABRIEL	359,047	248,751	143,147	339,501	6,000	1,096,446	884,547	1,980,993
SAN MARINO	118,172	81,871	50,334	111,739	3,000	365,116	291,129	656,245
SANTA CLARITA	1,991,607	1,379,804	772,203	1,883,187	10,000	6,036,801	4,906,518	10,943,319
SANTA FE SPRINGS	162,953	112,895	67,589	154,082	4,000	501,520	401,451	902,970
SANTA MONICA	835,646	578,943	326,790	790,155	7,500	2,539,033	2,058,695	4,597,728
SIERRA MADRE	98,128	67,984	42,610	92,786	3,000	304,508	241,747	546,255
SIGNAL HILL	104,420	72,343	45,035	98,735	3,000	323,533	257,248	580,781
SOUTH EL MONTE	191,420	132,617	78,558	180,999	5,000	588,594	471,581	1,060,175
SOUTH GATE	867,870	601,268	339,206	820,624	7,500	2,636,468	2,138,082	4,774,550
SOUTH PASADENA	230,718	159,843	93,700	218,158	6,000	708,418	568,395	1,276,814
TEMPLE CITY	325,610	225,585	130,263	307,884	6,000	995,342	802,171	1,797,513
TORRANCE	1,307,274	905,692	508,517	1,236,108	10,000	3,967,591	3,220,597	7,188,188
VERNON	2,652	1,837	5,822	2,507	1,000	13,818	6,533	20,350
WALNUT	268,173	185,793	108,132	253,574	6,000	821,671	660,670	1,482,341
WEST COVINA	953,665	660,708	372,265	901,749	10,000	2,898,388	2,349,447	5,247,835
WEST HOLLYWOOD	324,711	224,963	129,917	307,034	6,000	992,624	799,956	1,792,581
WESTLAKE VILLAGE	74,335	51,500	33,443	70,288	2,000	231,566	183,132	414,698
WHITTIER	774,775	536,772	303,335	732,598	7,500	2,354,980	1,908,735	4,263,715

Local Streets and Roads - Projected FY2022-23 Revenues

Based on State Dept of Finance statewide revenue projections

Estimated May 2022

	Highway Users Tax Acct (HUTA) ⁽¹⁾ Streets & Highways Code					TOTAL HUTA	Road Mntnc Rehab Acct	TOTAL
	Sec2103 ⁽⁵⁾	Sec2105 ⁽³⁾	Sec2106 ⁽³⁾	Sec2107 ⁽³⁾	Sec2107.5 ⁽⁴⁾			
MADERA COUNTY								
CHOWCHILLA	168,265	116,576	44,828	159,105	4,000	492,774	414,538	907,312
MADERA	594,789	412,076	146,290	562,410	7,500	1,723,065	1,465,321	3,188,386
MARIN COUNTY								
BELVEDERE	18,588	12,878	12,825	17,576	1,000	62,867	45,794	108,661
CORTE MADERA	90,146	62,454	43,716	85,239	3,000	284,555	222,083	506,638
FAIRFAX	67,396	46,693	33,895	63,727	2,000	213,711	166,037	379,747
LARKSPUR	109,606	75,936	52,117	103,639	3,000	344,299	270,025	614,324
MILL VALLEY	130,783	90,608	61,259	123,663	3,000	409,314	322,197	731,511
NOVATO	480,761	333,076	212,345	454,589	7,500	1,488,270	1,184,401	2,672,671
ROSS	22,894	15,861	14,683	21,647	1,000	76,086	56,401	132,487
SAN ANSELMO	114,055	79,019	54,038	107,846	3,000	357,959	280,987	638,945
SAN RAFAEL	530,467	367,513	233,804	501,589	7,500	1,640,873	1,306,858	2,947,730
SAUSALITO	66,111	45,802	33,340	62,512	2,000	209,765	162,870	372,635
TIBURON	84,996	58,886	41,493	80,369	2,000	267,743	209,395	477,137
MARIPOSA COUNTY								
MENDOCINO COUNTY								
FORT BRAGG	66,596	46,138	34,305	62,971	2,000	212,011	164,066	376,076
POINT ARENA	4,036	2,796	6,588	3,816	1,000	18,236	9,943	28,179
UKIAH	144,491	100,105	68,817	136,625	4,000	454,037	355,967	810,004
WILLITS	45,302	31,386	24,871	42,836	2,000	146,395	111,606	258,002
MERCED COUNTY								
ATWATER	285,925	198,092	89,629	270,360	6,000	850,005	704,405	1,554,410
DOS PALOS	50,111	34,717	19,667	47,383	2,000	153,879	123,453	277,332
GUSTINE	52,538	36,399	20,387	49,678	2,000	161,002	129,432	290,434
LIVINGSTON	138,855	96,200	45,996	131,296	4,000	416,346	342,082	758,429
LOS BANOS	385,329	266,960	119,120	364,353	6,000	1,141,762	949,296	2,091,058
MERCED	817,696	566,507	247,395	773,182	7,500	2,412,280	2,014,473	4,426,753
MODOC COUNTY								
ALTURAS	25,941	17,972	12,886	26,010	1,000	83,808	63,908	147,716
MONO COUNTY								
MAMMOTH LAKES	74,012	51,276	62,427	1,922,000	2,000	2,111,715	182,335	2,294,050

Local Streets and Roads - Projected FY2022-23 Revenues

Based on State Dept of Finance statewide revenue projections

Estimated May 2022

	Highway Users Tax Acct (HUTA) ⁽¹⁾ Streets & Highways Code					TOTAL HUTA	Road Mntnc Rehab Acct	TOTAL
	Sec2103 ⁽⁵⁾	Sec2105 ⁽³⁾	Sec2106 ⁽³⁾	Sec2107 ⁽³⁾	Sec2107.5 ⁽⁴⁾			
MONTEREY COUNTY								
CARMEL-BY-THE-SEA	36,161	25,053	15,343	34,192	1,000	111,749	89,086	200,835
DEL REY OAKS	15,011	10,400	9,177	14,194	1,000	49,781	36,981	86,762
GONZALES	76,313	52,870	27,050	72,158	2,000	230,391	188,004	418,395
GREENFIELD	165,407	114,596	53,027	156,402	4,000	493,432	407,496	900,928
KING CITY	134,621	93,267	44,051	127,293	3,000	402,232	331,653	733,884
MARINA	197,029	136,503	62,247	186,303	6,000	588,081	485,399	1,073,481
MONTEREY	255,112	176,744	79,182	241,225	6,000	758,264	628,495	1,386,758
PACIFIC GROVE	139,646	96,748	45,516	132,044	4,000	417,953	344,031	761,985
SALINAS	1,440,017	997,657	424,660	1,361,624	10,000	4,233,958	3,547,621	7,781,580
SAND CITY	3,461	2,398	5,809	3,272	1,000	15,939	8,525	24,465
SEASIDE	296,846	205,658	91,350	280,686	6,000	880,541	731,310	1,611,850
SOLEDAD	231,347	160,279	72,253	218,753	6,000	688,632	569,945	1,258,577
NAPA COUNTY								
AMERICAN CANYON	186,979	129,541	62,595	176,801	5,000	560,916	460,642	1,021,558
CALISTOGA	47,999	33,254	19,636	45,386	2,000	148,275	118,250	266,524
NAPA	713,662	494,432	225,391	674,812	7,500	2,115,797	1,758,177	3,873,974
SAINT HELENA	54,560	37,800	21,664	51,590	2,000	167,615	134,415	302,030
YOUNTVILLE	26,363	18,265	12,949	24,928	1,000	83,505	64,949	148,454
NEVADA COUNTY								
GRASS VALLEY	115,593	80,084	110,257	109,300	3,000	418,232	284,773	703,006
NEVADA CITY	27,694	19,186	30,065	26,186	1,000	104,131	68,226	172,357
TRUCKEE	145,731	100,964	137,752	1,747,721	4,000	2,136,168	359,023	2,495,191

Local Streets and Roads - Projected FY2022-23 Revenues

Based on State Dept of Finance statewide revenue projections

Estimated May 2022

	Highway Users Tax Acct (HUTA) ⁽¹⁾ Streets & Highways Code					TOTAL HUTA	Road Mntnc Rehab Acct	TOTAL
	Sec2103 ⁽⁵⁾	Sec2105 ⁽³⁾	Sec2106 ⁽³⁾	Sec2107 ⁽³⁾	Sec2107.5 ⁽⁴⁾			
ORANGE COUNTY								
ALISO VIEJO	447,746	310,203	192,214	423,371	7,500	1,381,033	1,103,065	2,484,098
ANAHEIM	3,177,158	2,201,166	1,334,669	3,004,199	10,000	9,727,191	7,827,239	17,554,431
BREA	405,715	281,083	174,621	383,629	6,000	1,251,049	999,519	2,250,568
BUENA PARK	733,698	508,313	311,905	693,756	7,500	2,255,173	1,807,536	4,062,709
COSTA MESA	1,013,727	702,320	429,117	958,541	10,000	3,113,704	2,497,414	5,611,119
CYPRESS	436,222	302,219	187,390	412,475	6,000	1,344,307	1,074,676	2,418,984
DANA POINT	299,776	207,688	130,278	283,457	6,000	927,200	738,529	1,665,728
FOUNTAIN VALLEY	497,183	344,453	212,907	470,117	7,500	1,532,159	1,224,858	2,757,017
FULLERTON	1,253,280	868,284	529,388	1,185,053	10,000	3,846,005	3,087,577	6,933,583
GARDEN GROVE	1,550,306	1,074,067	653,714	1,465,910	10,000	4,753,997	3,819,330	8,573,327
HUNTINGTON BEACH	1,769,608	1,226,002	745,508	1,673,273	10,000	5,424,391	4,359,602	9,783,993
IRVINE	2,440,961	1,691,122	1,026,518	2,308,079	10,000	7,476,680	6,013,547	13,490,227
LAGUNA BEACH	204,246	141,504	90,292	193,128	5,000	634,170	503,181	1,137,351
LAGUNA HILLS	279,301	193,502	121,707	264,096	6,000	864,606	688,084	1,552,690
LAGUNA NIGUEL	585,765	405,823	249,985	553,876	7,500	1,802,949	1,443,088	3,246,037
LAGUNA WOODS	146,270	101,338	66,025	138,308	4,000	455,940	360,351	816,292
LA HABRA	564,552	391,127	241,105	533,818	7,500	1,738,102	1,390,828	3,128,930
LAKE FOREST	759,872	526,447	322,861	718,506	7,500	2,335,187	1,872,020	4,207,207
LA PALMA	139,933	96,947	63,372	132,316	4,000	436,569	344,740	781,308
LOS ALAMITOS	103,710	71,851	48,210	98,064	3,000	324,835	255,499	580,333
MISSION VIEJO	845,992	586,111	358,908	799,937	7,500	2,598,448	2,084,183	4,682,631
NEWPORT BEACH	771,800	534,711	327,854	729,785	7,500	2,371,649	1,901,405	4,273,055
ORANGE	1,234,719	855,425	521,618	1,167,502	10,000	3,789,264	3,041,850	6,831,114
PLACENTIA	459,970	318,672	197,331	434,930	7,500	1,418,402	1,133,181	2,551,584
RANCHO SANTA MARGARITA	433,094	300,052	186,081	409,517	6,000	1,334,745	1,066,970	2,401,715
SAN CLEMENTE	575,850	398,955	245,835	544,502	7,500	1,772,641	1,418,663	3,191,305
SAN JUAN CAPISTRANO	321,798	222,945	139,496	304,280	6,000	994,519	792,782	1,787,301
SANTA ANA	2,978,520	2,063,548	1,251,525	2,816,375	10,000	9,119,968	7,337,876	16,457,844
SEAL BEACH	219,707	152,215	96,763	207,746	5,000	681,431	541,269	1,222,700
STANTON	355,703	246,435	153,687	336,339	6,000	1,098,164	876,309	1,974,474
TUSTIN	719,163	498,243	305,822	680,013	7,500	2,210,742	1,771,729	3,982,471
VILLA PARK	52,241	36,193	26,667	49,397	2,000	166,499	128,702	295,200
WESTMINSTER	822,145	569,590	348,927	777,389	7,500	2,525,550	2,025,434	4,550,985
YORBA LINDA	609,836	422,500	260,060	576,637	7,500	1,876,534	1,502,390	3,378,924

Local Streets and Roads - Projected FY2022-23 Revenues

Based on State Dept of Finance statewide revenue projections

Estimated May 2022

	Highway Users Tax Acct (HUTA) ⁽¹⁾ Streets & Highways Code					TOTAL HUTA	Road Mntnc Rehab Acct	TOTAL
	Sec2103 ⁽⁵⁾	Sec2105 ⁽³⁾	Sec2106 ⁽³⁾	Sec2107 ⁽³⁾	Sec2107.5 ⁽⁴⁾			
PLACER COUNTY								
AUBURN	129,731	89,879	60,466	122,669	3,000	405,746	319,606	725,352
COLFAX	19,523	13,526	13,177	18,460	1,000	65,686	48,097	113,783
LINCOLN	446,047	309,026	196,193	421,765	6,000	1,379,030	1,098,880	2,477,910
LOOMIS	61,194	42,396	31,057	57,863	2,000	194,510	150,757	345,267
ROCKLIN	633,413	438,834	276,589	598,931	7,500	1,955,267	1,560,474	3,515,741
ROSEVILLE	1,320,190	914,641	571,276	1,248,321	10,000	4,064,428	3,252,418	7,316,847
PLUMAS COUNTY								
PORTOLA	18,912	13,102	9,039	131,432	1,000	173,485	46,591	220,077
RIVERSIDE COUNTY								
BANNING	289,727	200,726	124,912	273,955	6,000	895,320	713,772	1,609,091
BEAUMONT	473,570	328,094	201,127	447,789	7,500	1,458,079	1,166,685	2,624,765
BLYTHE	187,114	129,635	82,372	176,928	5,000	581,048	460,974	1,042,023
CALIMESA	92,007	63,743	42,943	86,998	2,000	287,691	226,667	514,358
CANYON LAKE	99,099	68,656	45,883	93,704	3,000	310,342	244,139	554,481
CATHEDRAL CITY	485,138	336,108	205,922	458,728	7,500	1,493,397	1,195,185	2,688,581
COACHELLA	429,876	297,823	183,013	406,475	6,000	1,323,187	1,059,043	2,382,229
CORONA	1,523,143	1,055,248	636,246	1,440,225	10,000	4,664,861	3,752,410	8,417,271
DESERT HOT SPRINGS	270,429	187,356	116,911	255,707	6,000	836,403	666,228	1,502,631
EASTVALE	607,858	421,130	256,798	574,768	7,500	1,868,054	1,497,519	3,365,573
HEMET	759,756	526,366	319,770	718,396	7,500	2,331,787	1,871,732	4,203,519
INDIAN WELLS	48,790	33,802	25,027	46,134	2,000	155,752	120,198	275,950
INDIO	823,538	570,555	346,212	778,706	7,500	2,526,512	2,028,867	4,555,378
JURUPA VALLEY	971,633	673,157	407,608	918,739	10,000	2,981,137	2,393,713	5,374,850
LAKE ELSINORE	582,115	403,295	246,126	550,426	7,500	1,789,462	1,434,098	3,223,560
LA QUINTA	370,750	256,859	158,501	350,567	6,000	1,142,677	913,379	2,056,056
MENIFEE	896,031	620,779	376,265	847,252	7,500	2,747,827	2,207,459	4,955,286
MORENO VALLEY	1,882,432	1,304,167	785,195	1,779,955	10,000	5,761,750	4,637,555	10,399,305
MURRIETA	1,035,227	717,215	433,972	978,871	10,000	3,175,285	2,550,383	5,725,668
NORCO	243,257	168,531	105,646	230,014	6,000	753,448	599,286	1,352,734
PALM DESERT	484,410	335,604	205,621	458,039	7,500	1,491,174	1,193,391	2,684,565
PALM SPRINGS	429,238	297,380	182,748	405,871	6,000	1,321,238	1,057,470	2,378,709
PERRIS	709,887	491,817	299,096	671,242	7,500	2,179,542	1,748,876	3,928,419
RANCHO MIRAGE	168,975	117,068	74,852	159,777	4,000	524,672	416,287	940,959
RIVERSIDE	2,914,999	2,019,539	1,213,264	2,756,311	10,000	8,914,112	7,181,384	16,095,496
SAN JACINTO	460,833	319,270	195,846	435,746	7,500	1,419,195	1,135,307	2,554,502
TEMECULA	1,013,646	702,263	425,025	958,464	10,000	3,109,398	2,497,215	5,606,613
WILDOMAR	332,692	230,493	142,724	314,581	6,000	1,026,490	819,620	1,846,110

Local Streets and Roads - Projected FY2022-23 Revenues

Based on State Dept of Finance statewide revenue projections

Estimated May 2022

	Highway Users Tax Acct (HUTA) ⁽¹⁾ Streets & Highways Code					TOTAL HUTA	Road Mntnc Rehab Acct	TOTAL
	Sec2103 ⁽⁵⁾	Sec2105 ⁽³⁾	Sec2106 ⁽³⁾	Sec2107 ⁽³⁾	Sec2107.5 ⁽⁴⁾			
SACRAMENTO COUNTY								
CITRUS HEIGHTS	789,292	546,829	356,537	746,324	7,500	2,446,482	1,944,498	4,390,980
ELK GROVE	1,601,073	1,109,239	718,296	1,513,913	10,000	4,952,521	3,944,400	8,896,921
FOLSOM	739,783	512,529	334,474	699,510	7,500	2,293,797	1,822,528	4,116,324
GALT	234,744	162,633	109,411	221,965	6,000	734,754	578,316	1,313,070
ISLETON	7,478	5,181	8,133	7,071	1,000	28,864	18,424	47,288
RANCHO CORDOVA	716,044	496,082	323,895	677,064	7,500	2,220,586	1,764,045	3,984,631
SACRAMENTO	4,635,143	3,211,272	2,070,388	4,382,813	20,000	14,319,615	11,419,127	25,738,742
SAN BENITO COUNTY								
HOLLISTER	371,999	257,725	152,339	351,748	6,000	1,139,811	916,457	2,056,268
SAN JUAN BAUTISTA	19,334	13,395	12,468	18,282	1,000	64,479	47,632	112,111
SAN BERNARDINO COUNTY								
ADELANTO	315,920	218,872	136,652	298,722	6,000	976,166	778,300	1,754,465
APPLE VALLEY	668,297	463,003	283,719	631,916	7,500	2,054,435	1,646,416	3,700,851
BARSTOW	217,567	150,733	95,603	205,723	5,000	674,627	535,999	1,210,625
BIG BEAR LAKE	46,641	32,314	24,266	419,628	2,000	524,850	114,906	639,756
CHINO	792,645	549,152	335,616	749,494	7,500	2,434,407	1,952,757	4,387,164
CHINO HILLS	743,001	514,758	314,897	702,553	7,500	2,282,709	1,830,455	4,113,165
COLTON	487,160	337,509	208,120	460,640	7,500	1,500,930	1,200,167	2,701,097
FONTANA	1,923,042	1,332,302	807,396	1,818,355	10,000	5,891,095	4,737,602	10,628,698
GRAND TERRACE	111,449	77,213	51,314	105,382	3,000	348,357	274,565	622,922
HESPERIA	863,375	598,155	365,136	816,375	7,500	2,650,541	2,127,010	4,777,550
HIGHLAND	494,909	342,877	211,354	467,966	7,500	1,524,606	1,219,255	2,743,862
LOMA LINDA	223,769	155,030	98,192	211,588	5,000	693,579	551,278	1,244,857
MONTCLAIR	355,928	246,590	153,349	336,552	6,000	1,098,419	876,863	1,975,282
NEEDLES	48,116	33,335	24,881	45,496	2,000	153,828	118,537	272,366
ONTARIO	1,635,949	1,133,401	687,575	1,546,890	10,000	5,013,815	4,030,319	9,044,134
RANCHO CUCAMONGA	1,574,170	1,090,600	661,792	1,488,475	10,000	4,825,038	3,878,123	8,703,160
REDLANDS	639,570	443,100	271,729	604,753	7,500	1,966,652	1,575,643	3,542,295
RIALTO	921,927	638,720	389,573	871,738	10,000	2,831,958	2,271,256	5,103,214
SAN BERNARDINO	1,944,138	1,346,918	816,201	1,838,303	10,000	5,955,559	4,789,575	10,745,134
TWENTYNINE PALMS	269,359	186,615	117,219	254,696	6,000	833,889	663,593	1,497,482
UPLAND	705,717	488,927	299,336	667,298	7,500	2,168,778	1,738,602	3,907,380
VICTORVILLE	1,143,071	791,931	481,869	1,080,844	10,000	3,507,716	2,816,068	6,323,785
YUCAIPA	500,068	346,452	213,507	472,845	7,500	1,540,372	1,231,966	2,772,338
YUCCA VALLEY	200,714	139,057	88,569	189,787	5,000	623,127	494,478	1,117,605

Local Streets and Roads - Projected FY2022-23 Revenues

Based on State Dept of Finance statewide revenue projections

Estimated May 2022

	Highway Users Tax Acct (HUTA) ⁽¹⁾ Streets & Highways Code					TOTAL HUTA	Road Mntnc Rehab Acct	TOTAL
	Sec2103 ⁽⁵⁾	Sec2105 ⁽³⁾	Sec2106 ⁽³⁾	Sec2107 ⁽³⁾	Sec2107.5 ⁽⁴⁾			
SAN DIEGO COUNTY								
CARLSBAD	1,038,184	719,264	450,553	981,667	10,000	3,199,669	2,557,668	5,757,337
CHULA VISTA	2,466,893	1,709,088	1,063,982	2,332,600	10,000	7,582,562	6,077,433	13,659,995
CORONADO	221,990	153,797	100,113	209,905	5,000	690,805	546,893	1,237,698
DEL MAR	38,273	26,516	21,233	36,190	1,000	123,212	94,290	217,501
EL CAJON	928,003	642,929	403,246	877,484	10,000	2,861,662	2,286,226	5,147,888
ENCINITAS	559,887	387,895	245,192	529,407	7,500	1,729,881	1,379,335	3,109,216
ESCONDIDO	1,363,452	944,613	590,210	1,289,228	10,000	4,197,503	3,358,998	7,556,501
TIMPERIAL BEACH	249,647	172,958	111,988	236,057	6,000	776,651	615,031	1,391,682
LA MESA	535,519	371,013	234,730	506,366	7,500	1,655,127	1,319,303	2,974,429
LEMON GROVE	236,803	164,059	106,473	223,912	6,000	737,247	583,387	1,320,634
NATIONAL CITY	564,021	390,759	246,967	533,317	7,500	1,742,565	1,389,522	3,132,087
OCEANSIDE	1,588,759	1,100,707	686,947	1,502,269	10,000	4,888,683	3,914,062	8,802,745
POWAY	439,863	304,741	193,659	415,917	6,000	1,360,180	1,083,645	2,443,825
SAN DIEGO	12,683,123	8,786,990	5,450,406	11,992,674	20,000	38,933,193	31,246,111	70,179,304
SAN MARCOS	865,613	599,705	376,459	818,491	7,500	2,667,768	2,132,523	4,800,292
SANTEE	510,549	353,713	224,008	482,755	7,500	1,578,525	1,257,786	2,836,311
SOLANA BEACH	124,284	86,105	58,163	117,519	3,000	389,071	306,187	695,258
VISTA	928,228	643,085	403,342	877,696	10,000	2,862,351	2,286,779	5,149,131
SAN FRANCISCO COUNTY								
SAN FRANCISCO	7,865,054	5,448,986	2,045,617	7,436,893	20,000	22,816,550	19,376,330	42,192,880
SAN JOAQUIN COUNTY								
ESCALON	67,423	46,711	31,244	63,753	2,000	211,131	166,103	377,234
LATHROP	256,200	177,498	105,285	242,253	6,000	787,236	631,174	1,418,410
LODI	617,970	428,136	247,177	584,329	7,500	1,885,112	1,522,431	3,407,543
MANTECA	784,870	543,765	312,637	742,142	7,500	2,390,914	1,933,603	4,324,517
RIPON	146,441	101,456	62,236	138,469	4,000	452,602	360,772	813,374
STOCKTON	2,884,204	1,998,204	1,136,025	2,727,192	10,000	8,755,626	7,105,518	15,861,144
TRACY	886,278	614,022	352,411	838,031	7,500	2,698,242	2,183,433	4,881,674
SAN LUIS OBISPO COUNTY								
ARROYO GRANDE	157,794	109,321	82,007	149,204	4,000	502,326	388,740	891,066
ATASCADERO	266,267	184,473	135,083	251,772	6,000	843,595	655,975	1,499,570
EL PASO DE ROBLES	279,301	193,502	141,460	264,096	6,000	884,359	688,084	1,572,443
GROVER BEACH	118,253	81,927	62,660	111,816	3,000	377,656	291,328	668,984
MORRO BAY	91,989	63,731	49,809	86,981	3,000	295,510	226,623	522,133
PISMO BEACH	72,879	50,491	40,459	68,912	2,000	234,741	179,545	414,286
SAN LUIS OBISPO	413,994	286,819	207,364	391,457	6,000	1,305,634	1,019,914	2,325,548

Local Streets and Roads - Projected FY2022-23 Revenues

Based on State Dept of Finance statewide revenue projections

Estimated May 2022

	Highway Users Tax Acct (HUTA) ⁽¹⁾ Streets & Highways Code					TOTAL HUTA	Road Mntnc Rehab Acct	TOTAL
	Sec2103 ⁽⁵⁾	Sec2105 ⁽³⁾	Sec2106 ⁽³⁾	Sec2107 ⁽³⁾	Sec2107.5 ⁽⁴⁾			
SAN MATEO COUNTY								
ATHERTON	62,147	43,056	30,776	58,764	2,000	196,742	153,104	349,847
BELMONT	237,926	164,838	104,249	224,974	6,000	737,987	586,155	1,324,142
BRISBANE	41,158	28,515	22,004	38,918	1,000	131,595	101,398	232,993
BURLINGAME	267,373	185,238	116,557	252,817	6,000	827,986	658,699	1,486,685
COLMA	14,912	10,331	11,033	14,100	1,000	51,376	36,737	88,113
DALY CITY	976,145	676,283	412,812	923,006	10,000	2,998,246	2,404,830	5,403,076
EAST PALO ALTO	272,802	189,000	118,827	257,951	6,000	844,579	672,074	1,516,653
FOSTER CITY	295,201	204,518	128,189	279,131	6,000	913,040	727,257	1,640,297
HALF MOON BAY	110,640	76,652	51,046	104,617	3,000	345,955	272,572	618,527
HILLSBOROUGH	102,388	70,936	47,597	96,814	3,000	320,735	252,244	572,979
MENLO PARK	313,026	216,867	135,639	295,985	6,000	967,517	771,169	1,738,686
MILLBRAE	202,323	140,171	89,368	191,309	5,000	628,170	498,442	1,126,612
PACIFICA	340,575	235,954	147,155	322,035	6,000	1,051,719	839,041	1,890,760
PORTOLA VALLEY	40,988	28,397	21,932	38,756	1,000	131,073	100,977	232,050
REDWOOD CITY	765,661	530,457	324,833	723,980	7,500	2,352,431	1,886,281	4,238,712
SAN BRUNO	403,909	279,832	173,627	381,920	6,000	1,245,288	995,068	2,240,356
SAN CARLOS	267,984	185,662	116,813	253,395	6,000	829,854	660,205	1,490,059
SAN MATEO	926,223	641,696	391,946	875,801	10,000	2,845,666	2,281,841	5,127,507
SOUTH SAN FRANCISCO	603,445	418,073	257,030	570,594	7,500	1,856,642	1,486,646	3,343,287
WOODSIDE	50,587	35,047	25,945	47,834	2,000	161,413	124,627	286,040
SANTA BARBARA COUNTY								
BUELLTON	48,853	33,846	21,698	46,193	2,000	152,589	120,353	272,943
CARPINTERIA	118,613	82,176	45,827	112,156	3,000	361,771	292,214	653,985
GOLETA	290,680	201,386	105,344	274,856	6,000	878,266	716,119	1,594,385
GUADALUPE	75,018	51,973	30,748	70,934	2,000	230,674	184,815	415,489
LOMPOC	381,950	264,618	136,913	361,157	6,000	1,150,638	940,970	2,091,609
SANTA BARBARA	836,428	579,485	294,114	790,894	7,500	2,508,421	2,060,621	4,569,042
SANTA MARIA	965,773	669,097	338,853	913,198	10,000	2,896,920	2,379,275	5,276,196
SOLVANG	49,545	34,325	21,937	46,848	2,000	154,655	122,058	276,713

Local Streets and Roads - Projected FY2022-23 Revenues

Based on State Dept of Finance statewide revenue projections

Estimated May 2022

	Highway Users Tax Acct (HUTA) ⁽¹⁾ Streets & Highways Code					TOTAL HUTA	Road Mntnc Rehab Acct	TOTAL
	Sec2103 ⁽⁵⁾	Sec2105 ⁽³⁾	Sec2106 ⁽³⁾	Sec2107 ⁽³⁾	Sec2107.5 ⁽⁴⁾			
SANTA CLARA COUNTY								
CAMPBELL	373,321	258,640	153,177	352,998	6,000	1,144,135	919,712	2,063,847
CUPERTINO	527,231	365,271	214,348	498,530	7,500	1,612,880	1,298,886	2,911,766
GILROY	508,742	352,461	207,000	481,047	7,500	1,556,750	1,253,335	2,810,085
LOS ALTOS	274,240	189,996	113,797	259,311	6,000	843,344	675,617	1,518,961
LOS ALTOS HILLS	75,414	52,247	34,773	71,308	2,000	235,743	185,789	421,532
LOS GATOS	277,170	192,026	114,962	262,082	6,000	852,240	682,836	1,535,076
MILPITAS	680,099	471,179	275,106	643,076	7,500	2,076,960	1,675,491	3,752,451
MONTE SERENO	32,395	22,443	17,675	30,631	1,000	104,144	79,807	183,952
MORGAN HILL	425,823	295,014	174,044	402,642	6,000	1,303,522	1,049,056	2,352,577
MOUNTAIN VIEW	744,376	515,711	300,653	703,854	7,500	2,272,094	1,833,843	4,105,937
PALO ALTO	608,137	421,323	246,504	575,031	7,500	1,858,496	1,498,205	3,356,701
SAN JOSE	9,256,227	6,412,804	3,683,694	8,752,333	20,000	28,125,058	22,803,620	50,928,678
SANTA CLARA	1,175,214	814,200	471,890	1,111,238	10,000	3,582,542	2,895,256	6,477,797
SARATOGA	274,564	190,220	113,926	259,617	6,000	844,326	676,414	1,520,741
SUNNYVALE	1,382,679	957,933	554,347	1,307,408	10,000	4,212,366	3,406,364	7,618,731
SANTA CRUZ COUNTY								
CAPITOLA	90,703	62,840	40,334	85,766	3,000	282,643	223,456	506,099
SANTA CRUZ	538,826	373,304	215,891	509,494	7,500	1,645,015	1,327,452	2,972,467
SCOTTS VALLEY	105,660	73,202	46,193	99,908	3,000	327,964	260,304	588,268
WATSONVILLE	461,705	319,874	185,678	436,570	7,500	1,411,327	1,137,455	2,548,782
SHASTA COUNTY								
ANDERSON	96,195	66,645	56,469	90,959	3,000	313,268	236,986	550,255
REDDING	824,383	571,141	447,601	779,505	7,500	2,630,129	2,030,948	4,661,078
SHASTA LAKE	95,791	66,365	56,252	90,576	3,000	311,984	235,990	547,974
SIERRA COUNTY								
LOYALTON	6,912	4,789	6,253	22,791	1,000	41,745	17,029	58,774
SISKIYOU COUNTY								
DORRIS	8,908	6,171	9,179	8,423	1,000	33,681	21,945	55,625
DUNSMUIR	14,831	10,275	12,091	39,882	1,000	78,079	36,538	114,617
ETNA	6,678	4,627	8,083	6,315	1,000	26,703	16,453	43,157
FORT JONES	6,382	4,421	7,937	6,034	1,000	25,775	15,722	41,497
MONTAGUE	12,970	8,986	11,176	12,264	1,000	46,397	31,954	78,351
MOUNT SHASTA	30,633	21,223	19,859	97,401	1,000	170,116	75,467	245,583
TULELAKE	9,078	6,290	9,263	8,584	1,000	34,215	22,366	56,581
WEED	26,669	18,477	17,911	25,217	1,000	89,273	65,702	154,975
YREKA	69,796	48,355	39,112	66,662	2,000	225,925	171,949	397,875

Local Streets and Roads - Projected FY2022-23 Revenues

Based on State Dept of Finance statewide revenue projections

Estimated May 2022

	Highway Users Tax Acct (HUTA) ⁽¹⁾ Streets & Highways Code					TOTAL HUTA	Road Mntnc Rehab Acct	TOTAL
	Sec2103 ⁽⁵⁾	Sec2105 ⁽³⁾	Sec2106 ⁽³⁾	Sec2107 ⁽³⁾	Sec2107.5 ⁽⁴⁾			
SOLANO COUNTY								
BENICIA	243,688	168,829	113,466	230,422	6,000	762,406	600,349	1,362,755
DIXON	181,541	125,774	85,753	171,659	4,000	568,727	447,245	1,015,972
FAIRFIELD	1,060,692	734,857	477,787	1,002,949	10,000	3,286,285	2,613,117	5,899,402
RIO VISTA	90,604	62,772	45,203	85,672	2,000	286,251	223,213	509,463
SUISUN CITY	259,607	179,858	120,565	245,474	6,000	811,504	639,567	1,451,070
VACAVILLE	881,245	610,535	397,767	833,271	7,500	2,730,317	2,171,032	4,901,349
VALLEJO	1,059,262	733,867	477,149	1,001,598	10,000	3,281,877	2,609,596	5,891,473
SONOMA COUNTY								
CLOVERDALE	82,092	56,874	40,095	77,623	2,000	258,685	202,242	460,927
COTATI	66,776	46,263	33,510	63,141	2,000	211,689	164,509	376,198
HEALDSBURG	106,065	73,483	50,402	100,291	3,000	333,240	261,301	594,540
PETALUMA	549,235	380,515	240,940	519,336	7,500	1,697,526	1,353,095	3,050,620
ROHNERT PARK	381,869	264,562	168,982	361,080	6,000	1,182,493	940,771	2,123,264
SANTA ROSA	1,543,430	1,069,303	668,386	1,459,408	10,000	4,750,526	3,802,390	8,552,916
SEBASTOPOL	68,825	47,683	34,391	65,078	2,000	217,977	169,558	387,535
SONOMA	98,191	68,027	47,016	92,845	3,000	309,080	241,902	550,982
WINDSOR	250,376	173,463	112,447	236,745	6,000	779,031	616,825	1,395,855
STANISLAUS COUNTY								
CERES	439,548	304,523	177,838	415,620	6,000	1,343,530	1,082,870	2,426,399
HUGHSON	65,643	45,478	30,642	62,070	2,000	205,833	161,719	367,552
MODESTO	1,971,131	1,365,619	780,782	1,863,826	10,000	5,991,357	4,856,073	10,847,430
NEWMAN	107,521	74,491	47,128	101,668	3,000	333,808	264,888	598,696
OAKDALE	208,866	144,705	87,025	197,496	5,000	643,093	514,563	1,157,656
PATTERSON	209,469	145,122	87,262	198,066	5,000	644,919	516,047	1,160,965
RIVERBANK	226,412	156,860	93,932	214,087	6,000	697,292	557,788	1,255,080
TURLOCK	672,522	465,930	269,554	635,911	7,500	2,051,416	1,656,823	3,708,240
WATERFORD	80,393	55,697	36,449	76,017	2,000	250,556	198,057	448,613
SUTTER COUNTY								
LIVE OAK	84,196	58,332	37,381	79,612	2,000	261,520	207,424	468,944
YUBA CITY	636,172	440,746	250,978	601,540	7,500	1,936,937	1,567,272	3,504,210
TEHAMA COUNTY								
CORNING	68,888	47,726	32,398	65,138	2,000	216,151	169,713	385,863
RED BLUFF	128,284	88,877	56,194	121,301	3,000	397,655	316,041	713,696
TEHAMA	4,027	2,790	6,413	3,808	1,000	18,038	9,921	27,958
TRINITY COUNTY								

Local Streets and Roads - Projected FY2022-23 Revenues

Based on State Dept of Finance statewide revenue projections

Estimated May 2022

	Highway Users Tax Acct (HUTA) ⁽¹⁾ Streets & Highways Code					TOTAL HUTA	Road Mntnc Rehab Acct	TOTAL
	Sec2103 ⁽⁵⁾	Sec2105 ⁽³⁾	Sec2106 ⁽³⁾	Sec2107 ⁽³⁾	Sec2107.5 ⁽⁴⁾			
TULARE COUNTY								
DINUBA	238,349	165,130	92,255	225,374	6,000	727,107	587,196	1,314,303
EXETER	98,847	68,482	41,069	93,466	3,000	304,863	243,519	548,382
FARMERSVILLE	101,813	70,537	42,157	96,271	3,000	313,778	250,826	564,604
LINDSAY	117,660	81,516	47,972	111,255	3,000	361,402	289,867	651,269
PORTERVILLE	535,456	370,969	201,268	506,306	7,500	1,621,500	1,319,148	2,940,647
TULARE	622,420	431,218	233,177	588,536	7,500	1,882,852	1,533,392	3,416,244
VISALIA	1,251,689	867,182	464,067	1,183,549	10,000	3,776,487	3,083,658	6,860,145
WOODLAKE	72,394	50,155	31,363	68,453	2,000	224,364	178,349	402,713
TUOLUMNE COUNTY								
SONORA	44,071	30,533	32,961	41,672	1,000	150,236	108,573	258,808
VENTURA COUNTY								
CAMARILLO	626,573	434,095	273,214	592,463	7,500	1,933,845	1,543,623	3,477,468
FILLMORE	142,082	98,436	65,666	134,347	4,000	444,530	350,032	794,562
MOORPARK	323,416	224,066	143,347	305,810	6,000	1,002,639	796,768	1,799,407
OJAI	67,063	46,462	33,529	63,413	2,000	212,467	165,217	377,685
OXNARD	1,839,728	1,274,581	792,912	1,739,576	10,000	5,656,797	4,532,348	10,189,145
PORT HUENEME	210,098	145,558	94,803	198,661	5,000	654,119	517,597	1,171,716
SAN BUENAVENTURA	956,676	662,795	414,626	904,596	10,000	2,948,693	2,356,866	5,305,559
SANTA PAULA	275,867	191,123	122,977	260,849	6,000	856,817	679,625	1,536,442
SIMI VALLEY	1,118,784	775,105	484,071	1,057,880	10,000	3,445,840	2,756,235	6,202,074
THOUSAND OAKS	1,138,694	788,898	492,600	1,076,705	10,000	3,506,898	2,805,284	6,312,182
YOLO COUNTY								
DAVIS	622,860	431,524	258,185	588,953	7,500	1,909,022	1,534,477	3,443,499
WEST SACRAMENTO	485,084	336,071	202,137	458,677	7,500	1,489,469	1,195,052	2,684,520
WINTERS	68,475	47,440	32,656	64,747	2,000	215,318	168,694	384,012
WOODLAND	548,103	379,731	227,773	518,265	7,500	1,681,372	1,350,304	3,031,676
YUBA COUNTY								
MARYSVILLE	109,669	75,980	45,224	103,699	3,000	337,572	270,180	607,752
WHEATLAND	32,449	22,481	16,761	30,682	1,000	103,372	79,940	183,312
Statewide Total	\$ 297,371,000	\$ 206,021,500	\$ 119,817,666	\$ 286,406,500	\$ 2,709,500	\$ 912,326,166	\$ 732,602,500	\$ 1,644,928,666

Notes:

1. The Highway Users Tax is also known as the "Motor Vehicle Fuel Tax", the "Gasoline Excise Tax" and "Article XIX Revenues."
2. Rolling Hills has no public streets and is therefore not eligible for HUTA or RMRA allocations.
3. Str&HwysCode §§ 2103, 2105, 2106, 2107 and RMRA amounts are paid monthly. Includes special payments for snow removal.
4. Str&HwysCode § 2107.5 amounts are typically paid by the State Controller once per year in July.
5. Str&HwysCode § 2103 allocations replace the former Prop42 TCRF revenues. Previously adjusted annually by the BOE until July 2019.

Local Streets and Roads - Projected FY2021-22 Revenues

Source: CSAC

Based on State Dept of Finance statewide revenue projections

Estimated May 2022

	Highway Users Tax Acct ⁽¹⁾ Streets & Hwys Code				TOTAL HUTA	Road Maintnc Rehab Acct	TOTAL Annual
	Sec2103 ⁽²⁾	Sec2104	Sec2105	Sec2106			
ALAMEDA COUNTY	8,384,599	13,650,512	6,221,435	408,166	28,664,712	20,479,305	49,144,017
ALPINE COUNTY	163,137	290,232	138,185	22,026	613,580	398,462	1,012,042
AMADOR COUNTY	810,831	708,673	521,894	190,283	2,231,681	1,980,446	4,212,127
BUTTE COUNTY	2,743,491	2,465,206	1,765,859	412,978	7,387,534	6,700,952	14,088,486
CALAVERAS COUNTY	1,230,752	1,009,598	792,178	318,937	3,351,465	3,006,100	6,357,565
COLUSA COUNTY	959,880	610,599	617,831	116,346	2,304,656	2,344,498	4,649,154
CONTRA COSTA COUNTY	7,100,212	11,120,564	5,320,608	902,502	24,443,886	17,342,201	41,786,087
DEL NORTE COUNTY	498,548	329,733	320,893	109,330	1,258,504	1,217,700	2,476,204
EL DORADO COUNTY	2,598,594	3,605,610	1,953,012	807,644	8,964,860	6,347,042	15,311,902
FRESNO COUNTY	9,126,793	9,545,885	5,874,497	1,182,329	25,729,504	22,292,105	48,021,609
GLENN COUNTY	1,171,307	749,033	753,916	139,338	2,813,594	2,860,906	5,674,500
HUMBOLDT COUNTY	2,232,827	1,727,952	1,437,168	401,153	5,799,100	5,453,659	11,252,759
IMPERIAL COUNTY	4,112,843	2,395,954	2,647,248	425,908	9,581,953	10,045,581	19,627,534
INYO COUNTY	1,359,102	960,853	874,791	120,061	3,314,807	3,319,593	6,634,400
KERN COUNTY	8,456,883	8,618,249	5,443,307	1,932,101	24,450,540	20,655,857	45,106,397
KINGS COUNTY	1,746,800	1,321,310	1,124,335	218,807	4,411,252	4,266,542	8,677,794
LAKE COUNTY	1,224,175	996,604	787,945	334,892	3,343,616	2,990,035	6,333,651
LASSEN COUNTY	1,175,966	931,481	756,915	125,182	2,989,544	2,872,285	5,861,829
LOS ANGELES COUNTY	51,110,365	82,543,840	37,682,591	2,608,129	173,944,925	124,836,584	298,781,509
MADRA COUNTY	2,559,216	1,689,334	1,647,249	481,187	6,376,986	6,250,860	12,627,846
MARIN COUNTY	1,893,846	2,530,909	1,245,616	283,830	5,954,201	4,625,701	10,579,902
MARIPOSA COUNTY	777,078	533,752	500,169	128,686	1,939,685	1,898,005	3,837,690
MENDOCINO COUNTY	1,816,849	1,315,114	1,169,423	392,090	4,693,476	4,437,638	9,131,114
MERCED COUNTY	3,439,853	2,709,365	2,214,075	576,896	8,940,189	8,401,807	17,341,996
MODOC COUNTY	1,144,547	865,076	736,692	62,918	2,809,233	2,795,545	5,604,778
MONO COUNTY	841,522	774,487	541,649	31,320	2,188,978	2,055,408	4,244,386
MONTEREY COUNTY	3,818,973	4,300,505	2,458,097	853,162	11,430,737	9,327,804	20,758,541
NAPA COUNTY	1,330,957	1,553,334	856,676	305,000	4,045,967	3,250,850	7,296,817
NEVADA COUNTY	1,411,631	1,688,542	908,602	307,387	4,316,162	3,447,894	7,764,056
ORANGE COUNTY	17,344,378	29,396,802	13,328,114	720,956	60,790,250	42,363,479	103,153,729
PLACER COUNTY	3,875,029	5,930,419	2,980,920	805,615	13,591,983	9,464,722	23,056,705
PLUMAS COUNTY	944,250	1,042,945	607,770	149,978	2,744,943	2,306,322	5,051,265
RIVERSIDE COUNTY	15,407,016	22,662,148	10,707,660	1,534,128	50,310,952	37,631,490	87,942,442
SACRAMENTO COUNTY	10,893,843	14,755,142	7,458,174	2,098,215	35,205,374	26,608,109	61,813,483
SAN BENITO COUNTY	919,371	778,967	591,757	157,804	2,447,899	2,245,556	4,693,455
SAN BERNARDINO COUNTY	14,685,236	21,556,867	10,176,157	1,438,363	47,856,623	35,868,551	83,725,174
SAN DIEGO COUNTY	20,140,359	31,345,467	14,721,866	1,921,776	68,129,468	49,192,637	117,322,105
SAN FRANCISCO COUNTY	3,868,645	4,963,934	2,490,069	9,600	11,332,248	9,449,129	20,781,377
SAN JOAQUIN COUNTY	6,185,778	7,654,783	3,981,501	902,824	18,724,886	15,108,705	33,833,591
SAN LUIS OBISPO COUNTY	3,346,034	3,331,756	2,153,688	646,113	9,477,591	8,172,657	17,650,248
SAN MATEO COUNTY	4,425,381	7,084,220	3,260,044	282,555	15,052,200	10,808,951	25,861,151
SANTA BARBARA COUNTY	3,371,461	4,351,196	2,272,784	784,652	10,780,093	8,234,763	19,014,856
SANTA CLARA COUNTY	10,331,518	16,724,552	7,530,666	292,619	34,879,355	25,234,635	60,113,990
SANTA CRUZ COUNTY	2,206,086	2,788,359	1,511,077	626,246	7,131,768	5,388,344	12,520,112
SHASTA COUNTY	2,613,071	2,528,760	1,681,914	405,038	7,228,783	6,382,401	13,611,184
SIERRA COUNTY	457,983	432,242	294,783	33,941	1,218,949	1,118,619	2,337,568
SISKIYOU COUNTY	1,872,148	1,551,292	1,205,016	201,870	4,830,326	4,572,704	9,403,030
SOLANO COUNTY	3,256,965	4,581,759	2,116,187	200,223	10,155,134	7,955,106	18,110,240
SONOMA COUNTY	4,687,193	5,635,501	3,016,931	907,467	14,247,092	11,448,424	25,695,516
STANISLAUS COUNTY	4,854,217	5,616,251	3,124,436	716,520	14,311,424	11,856,379	26,167,803
SUTTER COUNTY	1,487,292	1,182,256	957,301	200,790	3,827,639	3,632,696	7,460,335
TEHAMA COUNTY	1,647,546	1,012,121	1,060,449	258,011	3,978,127	4,024,115	8,002,242
TRINITY COUNTY	865,414	694,559	557,027	92,469	2,209,469	2,113,765	4,323,234
TULARE COUNTY	5,799,942	4,635,429	3,733,156	726,349	14,894,876	14,166,304	29,061,180
TUOLUMNE COUNTY	1,143,082	1,041,148	735,750	314,931	3,234,911	2,791,968	6,026,879
VENTURA COUNTY	5,473,121	8,537,071	4,044,171	601,609	18,655,972	13,368,045	32,024,017
YOLO COUNTY	2,030,241	2,134,845	1,306,773	173,116	5,644,975	4,958,843	10,603,818
YUBA COUNTY	1,175,323	876,904	756,501	280,040	3,088,768	2,870,715	5,959,483
Total	\$ 257,035,000	\$ 365,378,000	\$ 189,960,500	\$ 30,755,101	\$ 843,128,601	\$ 617,450,500	\$ 1,460,579,101

Notes:

1. The Highway Users Tax is also known as the "Motor Vehicle Fuel Tax", the "Gasoline Excise Tax" and "Article XIX Revenues."
2. Str&HwysCode § 2103 allocations replace the former Prop42 TCRF revenues. Previously adjusted annually by the BOE until July 2019.

Local Streets and Roads - Projected FY2021-22 Revenues

Source: CSAC

Based on State Dept of Finance statewide revenue projections
Estimated May 2022

	Highway Users Tax Acct ⁽¹⁾				TOTAL HUTA	Road Maintnc Rehab Acct	TOTAL Annual
	Streets & Hwys Code	Sec2103 ⁽²⁾	Sec2104	Sec2105			
ALAMEDA COUNTY	9,738,107	14,943,155	6,799,281	445,097	31,925,640	22,538,026	54,463,666
ALPINE COUNTY	189,472	291,006	138,822	23,178	642,478	438,518	1,080,996
AMADOR COUNTY	941,721	769,526	568,427	207,025	2,486,699	2,179,534	4,666,233
BUTTE COUNTY	3,186,367	2,689,120	1,923,306	450,354	8,249,147	7,374,578	15,623,725
CALAVERAS COUNTY	1,429,429	1,090,144	862,810	347,600	3,729,983	3,308,294	7,038,277
COLUSA COUNTY	1,114,831	618,822	672,917	126,237	2,532,807	2,580,183	5,112,990
CONTRA COSTA COUNTY	8,246,384	12,169,278	5,812,307	985,236	27,213,205	19,085,558	46,298,763
DEL NORTE COUNTY	579,028	358,701	349,504	118,571	1,405,804	1,340,112	2,745,916
EL DORADO COUNTY	3,018,080	3,841,424	2,086,858	881,589	9,827,951	6,985,090	16,813,041
FRESNO COUNTY	10,600,111	10,429,426	6,398,275	1,290,993	28,718,805	24,533,062	53,251,867
GLENN COUNTY	1,360,389	759,470	821,137	151,360	3,092,356	3,148,504	6,240,860
HUMBOLDT COUNTY	2,593,268	1,882,752	1,565,308	437,433	6,478,761	6,001,899	12,480,660
IMPERIAL COUNTY	4,776,771	2,581,255	2,883,280	464,482	10,705,788	11,055,432	21,761,220
INYO COUNTY	1,578,499	968,610	952,789	130,296	3,630,194	3,653,301	7,283,495
KERN COUNTY	9,822,060	9,419,929	5,928,640	2,110,237	27,280,866	22,732,327	50,013,193
KINGS COUNTY	2,028,782	1,444,838	1,224,582	238,191	4,936,393	4,695,445	9,631,838
LAKE COUNTY	1,421,790	1,089,111	858,199	365,033	3,734,133	3,290,614	7,024,747
LASSEN COUNTY	1,365,799	941,314	824,403	135,892	3,267,408	3,161,027	6,428,435
LOS ANGELES COUNTY	59,361,001	90,352,288	41,180,840	2,848,905	193,743,034	137,386,018	331,129,052
MADERA COUNTY	2,972,344	1,845,212	1,794,120	524,884	7,136,560	6,879,240	14,015,800
MARIN COUNTY	2,199,565	2,767,465	1,359,438	309,239	6,635,707	5,090,708	11,726,415
MARIPOSA COUNTY	902,520	541,175	544,765	139,721	2,128,181	2,088,806	4,216,987
MENDOCINO COUNTY	2,110,140	1,434,227	1,273,690	427,532	5,245,589	4,883,740	10,129,329
MERCED COUNTY	3,995,140	2,964,656	2,411,485	629,461	10,000,742	9,246,415	19,247,157
MODOC COUNTY	1,329,309	868,878	802,377	67,859	3,068,423	3,076,573	6,144,996
MONO COUNTY	977,367	779,249	589,943	33,333	2,379,892	2,262,032	4,641,924
MONTEREY COUNTY	4,435,461	4,705,079	2,677,264	931,325	12,749,129	10,265,499	23,014,628
NAPA COUNTY	1,545,810	1,697,961	933,058	332,371	4,509,200	3,577,648	8,086,848
NEVADA COUNTY	1,639,507	1,821,213	989,614	334,979	4,785,313	3,794,501	8,579,814
ORANGE COUNTY	20,144,243	32,185,403	14,568,760	786,869	67,685,275	46,622,148	114,307,423
PLACER COUNTY	4,500,567	6,380,429	3,207,735	879,372	14,968,103	10,416,181	25,384,284
PLUMAS COUNTY	1,096,679	1,051,947	661,960	162,985	2,973,571	2,538,170	5,511,741
RIVERSIDE COUNTY	17,894,137	24,801,340	11,698,712	1,675,388	56,069,577	41,414,467	97,484,044
SACRAMENTO COUNTY	12,652,413	16,153,892	8,150,182	2,291,743	39,248,230	29,282,939	68,531,169
SAN BENITO COUNTY	1,067,783	850,504	644,519	171,537	2,734,343	2,471,294	5,205,637
SAN BERNARDINO COUNTY	17,055,842	23,516,073	11,084,584	1,570,751	53,227,250	39,474,305	92,701,555
SAN DIEGO COUNTY	23,391,574	34,308,131	16,086,429	2,098,956	75,885,090	54,137,820	130,022,910
SAN FRANCISCO COUNTY	4,493,152	5,432,760	2,712,087	9,600	12,647,599	10,399,021	23,046,620
SAN JOAQUIN COUNTY	7,184,335	8,379,523	4,336,497	985,589	20,885,944	16,627,536	37,513,480
SAN LUIS OBISPO COUNTY	3,886,177	3,643,284	2,345,714	705,092	10,580,267	8,994,229	19,574,496
SAN MATEO COUNTY	5,139,761	7,754,799	3,562,470	307,846	16,764,876	11,895,542	28,660,418
SANTA BARBARA COUNTY	3,915,709	4,758,703	2,481,057	856,467	12,011,936	9,062,578	21,074,514
SANTA CLARA COUNTY	11,999,313	18,310,152	8,231,200	318,843	38,859,508	27,771,394	66,630,902
SANTA CRUZ COUNTY	2,562,209	3,045,376	1,647,548	683,383	7,938,516	5,930,017	13,868,533
SHASTA COUNTY	3,034,893	2,749,913	1,831,875	441,679	8,058,360	7,024,004	15,082,364
SIERRA COUNTY	531,914	433,846	321,066	36,197	1,323,023	1,231,071	2,554,094
SISKIYOU COUNTY	2,174,365	1,568,684	1,312,456	219,686	5,275,191	5,032,384	10,307,575
SOLANO COUNTY	3,782,730	5,014,788	2,312,051	217,886	11,327,455	8,754,809	20,082,264
SONOMA COUNTY	5,443,836	6,163,699	3,285,924	990,663	15,884,122	12,599,298	28,483,420
STANISLAUS COUNTY	5,637,823	6,147,481	3,403,015	782,022	15,970,341	13,048,264	29,018,605
SUTTER COUNTY	1,727,382	1,292,584	1,042,656	218,505	4,281,127	3,997,880	8,279,007
TEHAMA COUNTY	1,913,505	1,032,373	1,155,000	281,029	4,381,907	4,428,646	8,810,553
TRINITY COUNTY	1,005,115	699,725	606,692	100,147	2,411,679	2,326,255	4,737,934
TULARE COUNTY	6,736,214	5,065,091	4,066,009	792,762	16,660,076	15,590,398	32,250,474
TUOLUMNE COUNTY	1,327,608	1,121,542	801,350	343,222	3,593,722	3,072,636	6,666,358
VENTURA COUNTY	6,356,635	9,339,657	4,416,774	656,463	20,769,529	14,711,893	35,481,422
YOLO COUNTY	2,357,978	2,335,598	1,423,286	188,267	6,305,129	5,457,341	11,762,470
YUBA COUNTY	1,365,053	954,416	823,952	305,099	3,448,520	3,159,299	6,607,819
Total	\$ 257,035,000	\$ 365,378,000	\$ 189,960,500	\$ 30,755,101	\$ 843,128,601	\$ 617,450,500	\$ 1,460,579,101

Notes:

- The Highway Users Tax is also known as the "Motor Vehicle Fuel Tax", the "Gasoline Excise Tax" and "Article XIX Revenues."
- Str&HwysCode § 2103 allocations replace the former Prop42 TCRF revenues. Previously adjusted annually by the BOE until July 2019.