

Shared Revenue Estimates: State Revenue Allocations to Cities and Counties
Local Streets and Roads Estimates: 2022-23, 2023-24
Including Highway Users Tax Account (HUTA) and
Road Maintenance and Rehabilitation Account (RMRA)

The state of California imposes per-gallon excise taxes on gasoline and diesel fuel, sales taxes on gasoline and diesel fuel and registration taxes on motor vehicles with allocations dedicated to transportation purposes.¹ The local (city and county) portions of these allocations flow through the Highway Users Tax Account (HUTA), the familiar gasoline tax revenues that have been in place for decades, and the Road Maintenance and Rehabilitation Account (RMRA) which allocates much of the revenue from the Road Repair and Accountability Act of 2017 (SB1 Beall).

State taxes transferred to and allocated through the state Highway Users Tax Account (HUTA) include:

- The per gallon “gasoline tax” and “diesel fuel tax” imposed on the use of vehicle fuels.
- The “use fuel tax,” imposed on vendors and users of motor vehicle fuels that are not taxed under either the gasoline or diesel fuel tax, such as liquefied petroleum gas, ethanol, methanol and natural gas (both liquid and gaseous) for use on state highways. Use Fuel Tax rates vary depending on the type of fuel.
- Variable rate per gallon gasoline diesel fuel excise taxes imposed in 2010-11 in a complicated arrangement known as the “fuel tax swap.” This rate replaced the previous Proposition 42 sales tax on gasoline.

Transportation taxes allocated to cities and counties through the Road Maintenance and Rehabilitation Account (RMRA) established by the Road Repair and Accountability Act of 2017 (SB1 Beall) include:

- An additional 12 cent per gallon increase to the gasoline excise tax effective November 1, 2017 with annual inflation adjustments beginning July 1, 2020.
- An additional 20 cent per gallon increase to the diesel fuel excise tax effective November 1, 2017 with half of the revenues going to the state Trade Corridor Enhancement Account (TCEA) and half to the RMRA. Annual inflation adjustments beginning July 1, 2020.
- An additional vehicle registration tax called the “Transportation Improvement Fee” with rates based on the value of the motor vehicle effective January 1, 2018 with annual inflation adjustments beginning July 1, 2020.
- An additional \$100 vehicle registration tax on zero emissions vehicles of model year 2020 or later effective July 1, 2020 with annual inflation adjustments beginning July 1, 2021.

The Road Repair and Accountability Act of 2017 (SB1 Beall) also adopted annual inflationary adjustments beginning July 1, 2020 to all per-gallon motor vehicle fuel excise taxes including the rates allocated through the Highway Users Tax Account (HUTA).

¹ Taxes on aircraft jet fuel are transferred to the state Aeronautics Account.

Highway Users Tax Account (HUTA)

Revenue Allocations – Streets & Highways Code Sec 2103-2108 “HUTA”

Cities and counties receive revenue from the motor vehicle fuel taxes imposed pursuant to Revenue and Taxation Code Section 7360(a) and (b) through the Highway User Tax Account under the following formulas outlined in the Streets and Highways code and illustrated in Figure 1.

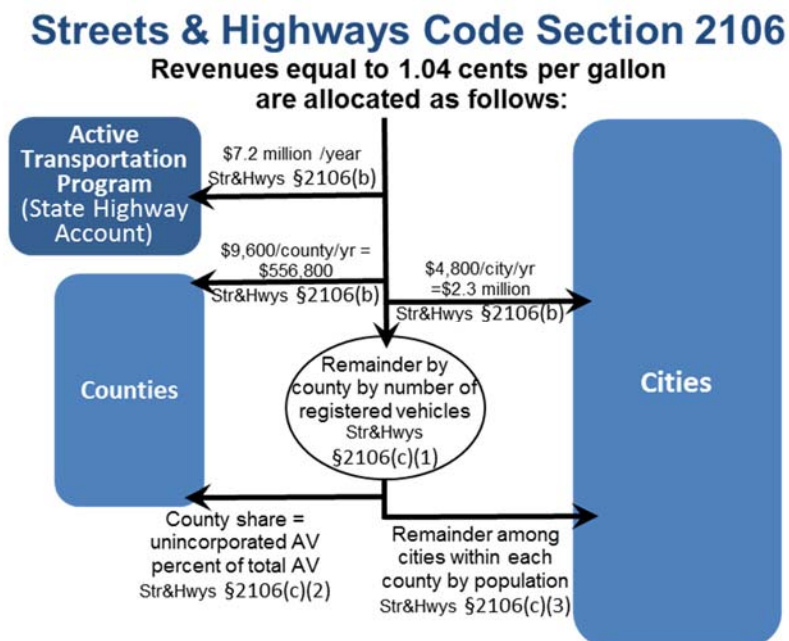
Section 2104. Section 2104 allocates funds to counties with designated allotments for engineering and administration, snow removal, heavy rainfall / storm damage as well as county streets, roads and public mass transit guideways and facilities.

Section 2105. Section 2105(a) allocates 11.5 percent of the tax revenues in excess of 9 cents per gallon (i.e. the Proposition 111 rate) monthly among counties based on population.

Section 2105(b) allocates 11.5 percent of the tax revenues in excess of 9 cents per gallon (i.e. the Proposition 111 rate) monthly among cities based on population.

Section 2106. Revenues equal to 1.04 cents per gallon are allocated as follows:

- \$7.2 million per year to the State Bicycle Transportation Account.
- \$400 per month to each city (\$2,308,800 per year among the 481 eligible cities²)
- \$800 per month to each county (\$556,800 per year among the 58 counties)
- The residual amount to each county and the cities in that county based on registered vehicles. In each county, from this amount, the county receives an allotment based on the share of assessed value of the county which is in the unincorporated area. The remainder is allocated to the cities within the county based on population.



² The city of Rolling Hills has only private streets and is therefore not eligible to receive these allocations.

Section 2107. This section provides monthly allocations to cities of 1.315 cents per gallon of gasoline, 1.8 cents per gallon of diesel, and 2.59 cents per liquefied petroleum gas (LPG), as follows.

- a. Each city with snow removal costs in excess of \$5,000 is allocated 50 percent of the cost exceeding \$5,000.
- b. The remainder is allocated to cities based on population.

Section 2107.5. These funds (about \$2.7 million per year) are allocated to cities annually in July based on population as follows:

Streets & Highway Code §2107.5	
City Population	Annual Allocation
over 500,000	\$ 20,000
100,000 to 500,000	\$ 10,000
50,000 to 99,999	\$ 7,500
25,000 to 49,999	\$ 6,000
20,000 to 24,999	\$ 5,000
15,000 to 19,999	\$ 4,000
10,000 to 14,999	\$ 3,000
5,000 to 9,999	\$ 2,000
less than 5,000	\$ 1,000

Section 2107.5 funds must be used for engineering costs and administrative expenses related to city streets. Cities with populations under 10,000 may also expend the moneys for street construction or acquisition of street rights-of-way.

Section 2103 HUTA and the 2010 Gasoline Sales Tax – Excise Tax Swap

In March 2010 as a part of a special budget session called by Governor Schwarzenegger, the Legislature enacted a swap of state sales taxes on gasoline for a gasoline excise tax. Intended to be “revenue neutral,” the fuel tax swap provided the Legislature with greater flexibility in the use of funds, in particular relieving the general fund from the cost of state transportation debt service payments. The fuel tax swap:

1. Repealed the state sales tax on gasoline (local rates including the Bradley Burns are NOT affected);
2. Increased the excise tax on gasoline by 17.322 cents and added an annual adjustment mechanism intended to ensure the new excise tax provides, over time, the same amount of revenues expected from the sales tax on gas (no more, no less);
3. Increased the sales tax on diesel by 1.75 percent and allocated 75 percent to local transit agencies and 25 percent to state transit programs. The excise tax on diesel was reduced from 18 cents to 13.6 cents. Sales tax revenues from diesel must go to transit funding.
4. Provided for a specific allocation of the funds among state and local transportation needs.

Revenues from the new Section 2103 excise tax rate are now allocated as follows:

1. State transportation debt service;
2. Remainder allocated:
 - a. 44 percent to the State Transportation Improvement Program (STIP);
 - b. 12 percent State Highway Operation and Protection Program (SHOPP);
 - c. 44 percent evenly split between cities and counties using current HUTA formulas.

Section 2103 funds are allocated to cities on a per capita basis and to counties 75 percent based on the proportion of registered vehicles and 25 percent based on the proportion of maintained county road miles.

The law included expressed legislative intent to fully replace the local streets and road funds cities and counties would have received under Proposition 42 state sales tax on gasoline with allocations from the new higher motor vehicle excise tax (HUTA) rate.

However, the swap created certain revenue effects related to the timing and receipt of revenues. In particular, the law provided that the new excise tax rate be adjusted annually by the BOE to garner an amount of revenues equal to what Prop42 would have provided in the prior year. Thus, the annual Sec 2103 funds were always “looking backward.” If the Section 2103 amounts generated less than Prop42 would have, the difference was made up until the following year.

In the years following the swap, there were a number of snafus and changes in interpretation of the Section 2103 allocation. In FY2011-12 SCO allocated more money to cities and counties and did not fully backfill state transportation programs for weight fees that were used for debt service and loans that those funds would have otherwise received. This was contrary to the Legislature’s intention, but the statute was not clear. The statute was clarified in the 2013 budget to clarify the original intent of the weight fee swap to fully backfill state transportation funds. [Streets & Highways Code 2103 (a)(1)(D)].

The Section 2103 Local Streets and Roads allocation to cities and counties have varied and declined dramatically and, due to BOE’s failure to enact a rate increase in 2018, fell to \$244 million for FY2018-19, about 5 percent down from prior year.

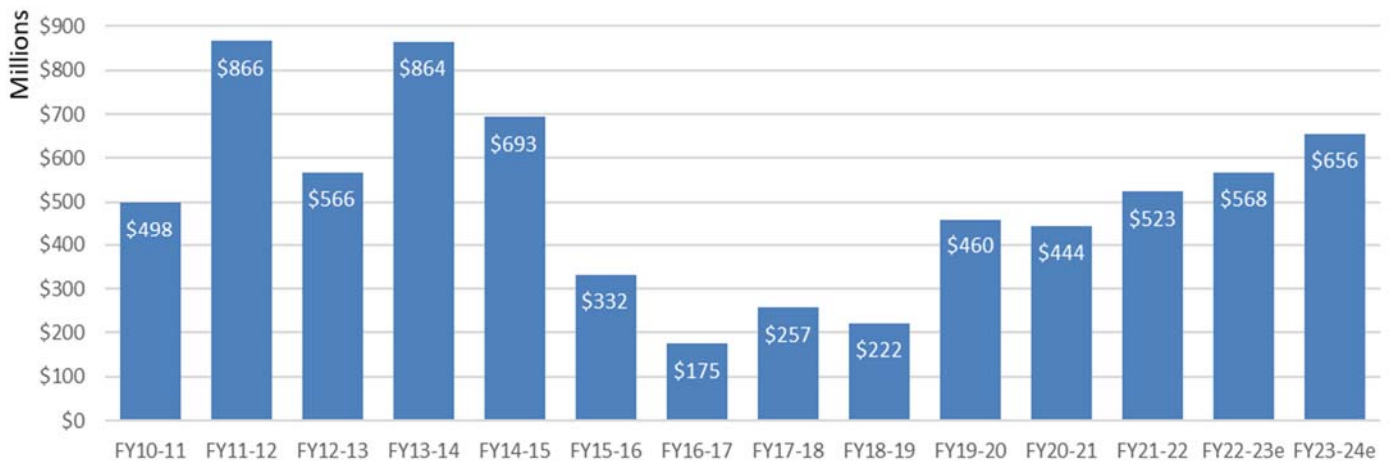
Changes to HUTA Allocated Rates, Including the Variable Rate by the Road Repair and Accountability Act of 2017 (SB1 Beall)

In addition to increasing various fuel and motor vehicle registration taxes, the Road Repair and Accountability Act of 2017 (SB1 Beall) removed BOE’s discretionary rate setting role over the Section 2103 variable rate and reset the variable rate at 17.3 cents per gallon on July 1, 2019, up from the current 11.7 cents. This adjustment more than doubled Section 2103 revenue allocations for FY2019-20 over the prior year.

With regard to diesel fuel taxes, SB1 also eliminated the price-based adjustment mechanism applied to the diesel fuel tax rate.

On July 1, 2020, and every July 1 thereafter, the gasoline and diesel fuel excise tax rates including the 18 cent per gallon base rate, the 17.3 percent per gallon rate, the diesel fuel excise tax rate and vehicle registration taxes are increased by the change in the California Consumer Price Index.

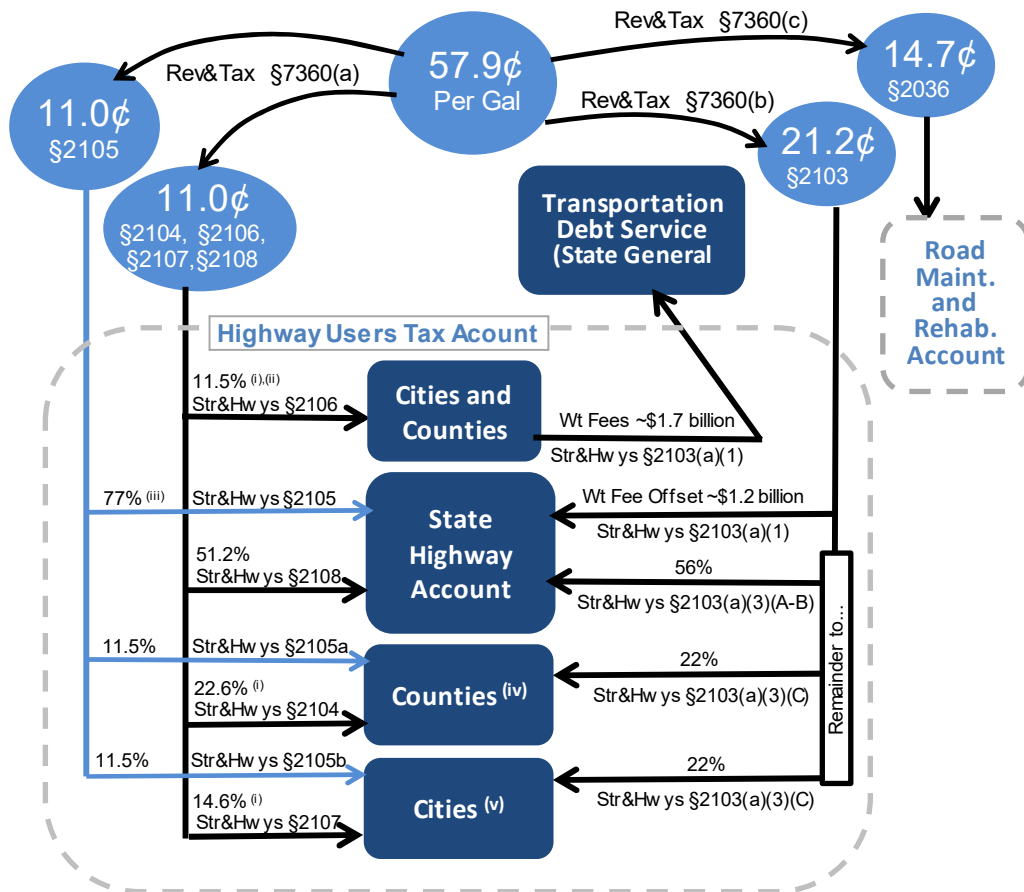
Streets & Highways Code Section 2103 Variable Gas Tax Allocations to Cities and Counties



California Gasoline Excise Tax Rates - Per Gallon				
Effective Date	Base Rate	Sec2103	SB1 Rate	Total
July 1, 2015	\$ 0.180	\$ 0.120		\$ 0.300
July 1, 2016	\$ 0.180	\$ 0.098		\$ 0.278
July 1, 2017	\$ 0.180	\$ 0.117		\$ 0.297
Nov 1, 2017*	\$ 0.180	\$ 0.117	\$ 0.120	\$ 0.417
July 1, 2019	\$ 0.180	\$ 0.173	\$ 0.120	\$ 0.473
July 1, 2020	\$ 0.192	\$ 0.185	\$ 0.128	\$ 0.505
July 1, 2021	\$ 0.194	\$ 0.187	\$ 0.130	\$ 0.511
July 1, 2022	\$ 0.205	\$ 0.197	\$ 0.137	\$ 0.539
July 1, 2023	\$ 0.220	\$ 0.212	\$ 0.147	\$ 0.579
July 1, 2024e	\$ 0.228	\$ 0.219	\$ 0.152	\$ 0.599

California Diesel Excise Tax Rates			
Effective Date	Base Rate	SB1 Rate	Total
July 1, 2017	\$ 0.160		\$ 0.160
Nov 1, 2017*	\$ 0.160	\$ 0.200	\$ 0.360
July 1, 2019	\$ 0.160	\$ 0.200	\$ 0.360
July 1, 2020	\$ 0.171	\$ 0.214	\$ 0.385
July 1, 2021	\$ 0.173	\$ 0.216	\$ 0.389
July 1, 2022	\$ 0.182	\$ 0.228	\$ 0.410
July 1, 2023	\$ 0.196	\$ 0.245	\$ 0.441
July 1, 2024e	\$ 0.203	\$ 0.254	\$ 0.457

Allocation of Gasoline Excise Tax Revenues



- (i) The 4.39¢ local share of diesel fuel tax is allocated 1.8¢ to counties and 2.59¢ to cities.
- (ii) Str&Hw y Code 2106 funds are distributed based on registered vehicles, assessed property valuation, and population.
- (iii) A portion of funds in State Highway Account is allocated among counties and cities for Regional Transportation Improvement Programs.
- (iv) County apportionments are based on numbers of registered vehicles and county road mileage.
- (v) City apportionments are based on population.
- (vi) Beginning July 1, 2020 and annually thereafter, these rates are subject to an annual cost-of-living adjustment.

Use of Funds: HUTA

The use of local Motor Vehicle Fuel Tax funds is restricted by Article XIX of the California State Constitution and by Streets and Highways Code Section 2101. All Motor Vehicle Fuel Tax funds allocated from the Highway Users Tax Account must be expended for the following:

- (a) The research, planning, construction, improvement, maintenance, and operation of public streets and highways (and their related public facilities for nonmotorized traffic), including the mitigation of their environmental effects, the payment for property taken or damaged for such purposes, and the administrative costs necessarily incurred in the foregoing purposes.
- (b) The research and planning for exclusive public mass transit guideways (and their related fixed facilities), the payment for property taken or damaged for such purposes, and the administrative costs necessarily incurred in the foregoing purposes.
- (c) The construction and improvement of exclusive public mass transit guideways (and their related fixed facilities), including the mitigation of their environmental effects, the payment for property taken or damaged for such purposes, the administrative costs necessarily incurred in the foregoing purposes, and the maintenance of the structures and the immediate right-of-way for the public mass transit guideways.
- (d) The payment of principal and interest on voter-approved bonds issued for the purposes specified above.

Three Year State General Fund TCRF Loan Repayment Funds

SB1 stipulated the repayment of \$706 million by the state General Fund to transportation funds over three fiscal years: 2017-18, 2018-19, and 2019-20. Under SB1, \$75 million was allocated to local streets and roads from repayments of Transportation Congestion Relief Funds (TCRF) in each of these three years. These funds were allocated half to cities and half to counties with the city funds allocated among cities on a per capita basis, the county funds allocated among counties based on numbers of registered vehicles and county road mileage.

These TCRF revenues may be deposited in local HUTA funds.³ However, these TCRF funds carry slightly different use requirements than HUTA funds. TCRF funds may be expended only for street and highway maintenance, rehabilitation, reconstruction or storm damage repair. For these purposes,

- “Maintenance” means patching and/or overlay and sealing.
- “Reconstruction” includes any overlay, sealing or widening of the roadway, if the widening is necessary to bring the roadway width to the state minimum standards, but does not include widening for the purpose of traffic capacity.
- “Storm damage repair” is repair or reconstruction of local streets and highways and related drainage improvements that have been damaged due to winter storms and flooding, and construction of drainage improvements to mitigate future roadway flooding and damage problems, in those jurisdictions that have been declared disaster areas by the President of the United States.

³ Note that the “loan repayment” is between the state general fund and state transportation funds. From an accounting standpoint this is NOT a debt repayment to local agencies, it is simply revenue.

Road Maintenance and Rehabilitation Account (RMRA)

Revenue Allocations – Streets & Highways Code Sec 2031 “RMRA”

The Road Repair and Accountability Act of 2017 (SB1 Beall) represented a significant additional investment in California’s transportation systems of over \$5 billion per year. The Act increased per gallon fuel excise taxes, diesel fuel sales taxes and vehicle registration taxes, stabilized the problematic price-based fuel tax rates and provided for inflationary adjustments to rates in future years. The Act is more than doubling local streets and road funds allocated through the Highway Users Tax Account (HUTA) and through the Road Maintenance and Rehabilitation Account (RMRA) which it established.

The RMRA receives funds⁴ from the following new taxes imposed under the Road Repair and Accountability Act of 2017:

- A 12 cent per gallon increase to the gasoline excise tax effective November 1, 2017.
- A 20 cent per gallon increase to the diesel fuel excise tax effective November 1, 2017, half of which will be allocated to Trade Corridors Enhancement Account (TCEA) with the remaining half to the RMRA.
- A new vehicle registration tax called the “transportation improvement fee,” effective January 1, 2018, based on the market value of the vehicle.
- An additional new \$100 vehicle registration tax on zero emission vehicles model year 2020 and later effective July 1, 2020.
- Annual rate increases to these taxes every July 1 (January 1 for the registration fees) for the change in the California Consumer Price Index. The first adjustment made on July 1, 2020 covered CPI change for two years: November 1, 2017 through November 12, 2019.

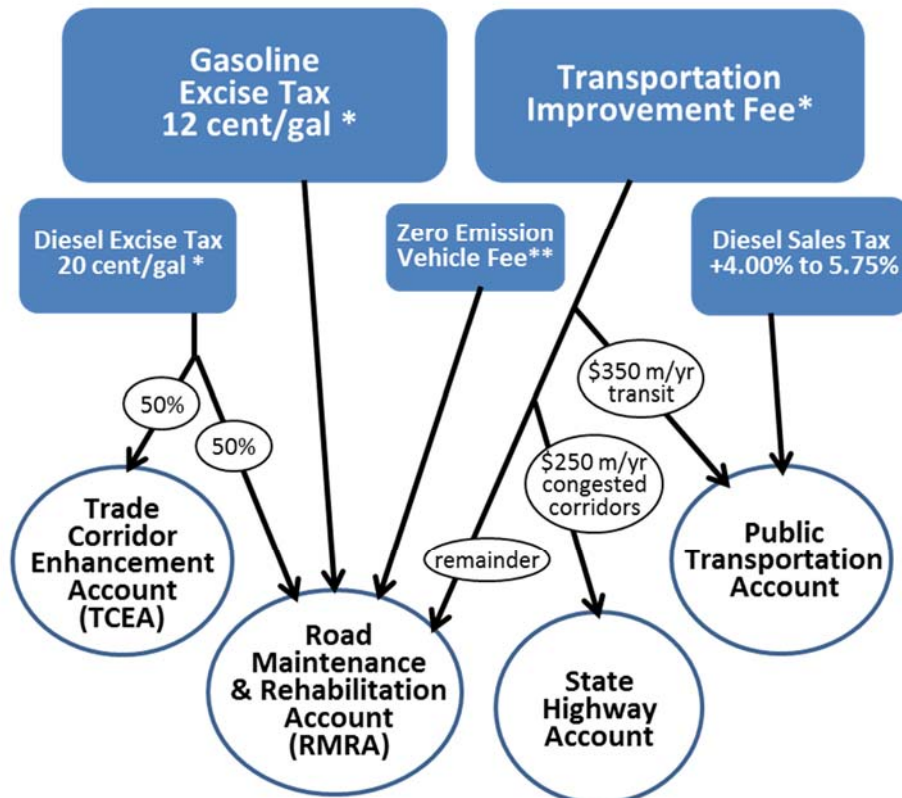
SB1 Transportation Improvement Fee						
Vehicle Value	Jan 2018	Jan 2020	Jan 2021	Jan 2022	Jan 2023	Jan 2024e
0 - \$4,999	\$ 25	\$ 27	\$ 27	\$ 28	\$ 29	\$ 32
\$5,000 - \$24,999	\$ 52	\$ 54	\$ 55	\$ 56	\$ 59	\$ 65
\$25,000 - \$34,999	\$ 105	\$ 107	\$ 110	\$ 112	\$ 118	\$ 129
\$35,000 - \$59,999	\$ 157	\$ 161	\$ 165	\$ 168	\$ 177	\$ 194
\$60,000 & over	\$ 183	\$ 188	\$ 192	\$ 196	\$ 206	\$ 227

SB1 Road Improvement Fee (ZEV)					
	Jan 2020	Jan 2021	Jan 2022	Jan 2023	Jan 2024e
ZEV vehicle*	\$ 100	\$ 101	\$ 103	\$ 108	\$ 118

*2020 or later models

⁴ In addition, funds from a 4 percent increase in the diesel sales tax to 5.75 percent from the prior 1.75 percent effective November 1, 2017 are allocated to the Public Transportation Account.

Road Maintenance and Rehabilitation Account Revenues



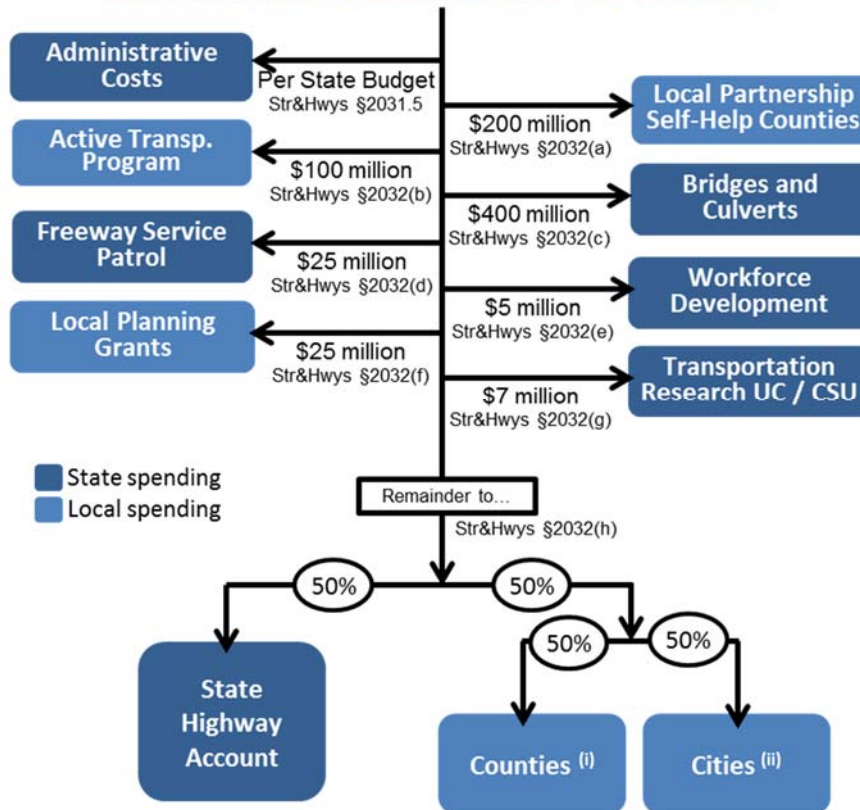
* adjusted for inflation annually beginning 7/1/2020

** effective 7/1/2020 adjusted for inflation annually beginning 7/1/2021

The Road Repair and Accountability Act directs the State Controller to allocate, on a monthly basis, fifty percent of the revenues in the RMRA to the State Highway Operation and Protection Program (SHOP) in the State Highway Account and half to cities and counties. But there are a series of specific program allocations, subject to appropriation in the annual state budget, to be taken out first:

1. Administrative costs.
2. \$200 million for the State-Local-Partnership Program for existing and aspiring self-help jurisdictions.
3. \$100 million annually for the Active Transportation Program for the purpose of encouraging increased use of active modes of transportation, such as biking and walking.
4. \$400 million for state bridge and culvert maintenance and rehabilitation.
5. \$25 million for the state's Freeway Service Patrol program.
6. \$5 million for five years through FY 2021-22 for pre-apprenticeship training programs of the California Workforce Development Board.
7. \$25 million for local planning grants to encourage local and regional planning.
8. \$7 million for transportation research and transportation-related workforce education, training, and development including \$5 million to the University of California and \$2 million to the California State University.

Allocation of Road Maintenance and Rehabilitation Account Revenues



(i) County apportionments are based on numbers of registered vehicles and county road mileage.
(ii) City apportionments are based on population.

Use of Funds: RMRA [Streets and Highways Code Section 2030]

The use of RMRA local streets and roads funds is similar but, not identical, to HUTA use rules. Pursuant to Streets and Highways Code Section 2030, RMRA local streets and roads allocations must be used for projects "that include, but are not limited to," the following

- Road maintenance and rehabilitation
- Safety projects
- Railroad grade separations
- Traffic control devices
- Complete street components, "including active transportation purposes, pedestrian and bicycle safety projects, transit facilities, and drainage and storm-water capture projects in conjunction with any other allowable project."

RMRA funds may also be used to satisfy a match requirement for projects eligible for state or federal funds.

SB1 also contains non-obligatory intent language regarding the use of funds. "To the extent possible and cost effective," cities and counties are to use a use:

- advanced recycling techniques that reduce greenhouse gas emissions;
- automotive technologies, ZEV fueling, infrastructure-to-vehicle;
- communications autonomous vehicle systems;

- resiliency re climate change, fires, floods, sea level rise; and
- complete street elements, access for bicycles, pedestrians.

If a city or county has an average Pavement Condition Index that meets or exceeds 80, the city or county may spend its RMRA funds on transportation priorities other than these. [Streets and Highways Code Sec 2037]

Maintenance of Effort: RMRA [Streets and Highways Code Sec 2036]

The Road Repair and Accountability Act contains a local agency maintenance of effort (MOE) requirement that applies to funds allocated through the RMRA. The Act states that the MOE requirement is to ensure that these new roads funds do not supplant existing levels of city and county general revenue spending on streets and roads. The MOE for the receipt of RMRA funds state that a city or county must maintain general fund spending for street, road, and highway purposes at no less than average of 2009–10, 2010–11, and 2011–12 years. In making this calculation an agency may exclude one-time funds. A city or county that fails to comply in a particular year may make it up with in additional expenditures in the following year.

The Act provides that the State Controller may perform audits to ensure compliance with these MOE rules. If the State Controller determines that a city or county has not met its MOE, the agency will be required to reimburse the state for the funds it received during that fiscal year. However, a city or county that fails to comply in a particular fiscal year may expend during that fiscal year and the following fiscal year a total amount that is sufficient to comply. Any funds withheld or returned as a result of a failure to comply will be reapportioned to the other counties and cities whose expenditures are in compliance.

For further guidance, see the State Controller’s *“Guidelines Relating to Gas Tax Expenditures for Cities and Counties.”*

Spending Plans and Reports: RMRA [Streets and Highways Code Sec 2034]

The Road Repair and Accountability Act stipulates that, prior to receiving RMRA funds in a fiscal year, a city or county must submit to the California Transportation Commission (CTC) a project list pursuant to an adopted budget. The list must include for each project: description, location, schedule, useful life. [Streets and Highways Code Sec 2034(a)]

The Road Repair and Accountability Act also requires that a city or county submit to the CTC an annual report of project completion in order to receive RMRA funds. The report must include descriptions of all projects for which RMRA funds were expended including: description, location, funds expended, completion date, estimated useful life of the project.

There are no additional use or reporting requirements on Highway Users Tax Account funds (Streets and Highways Code Sec 2103-2107) or on the three year transportation loan repayment funds.

Budgeting and Accounting for RMRA Funds: The ~60 Day Delay

The allocation of Road Maintenance and Rehabilitation Account (RMRA) revenues to cities and counties takes many weeks. It takes the State Controller’s Office roughly 30 to 60 days from the time of revenue collection by the state, through the various statutory set asides to distribute the funds to cities and counties in monthly allocations. Consequently, the estimates shown in this report are for revenues collected for July through June are not received on a cash basis by local agencies until September through August. That is, for example, the FY2022-23 figure for your agency is revenues collected in and for July 2022 through June 2023 but distributed in

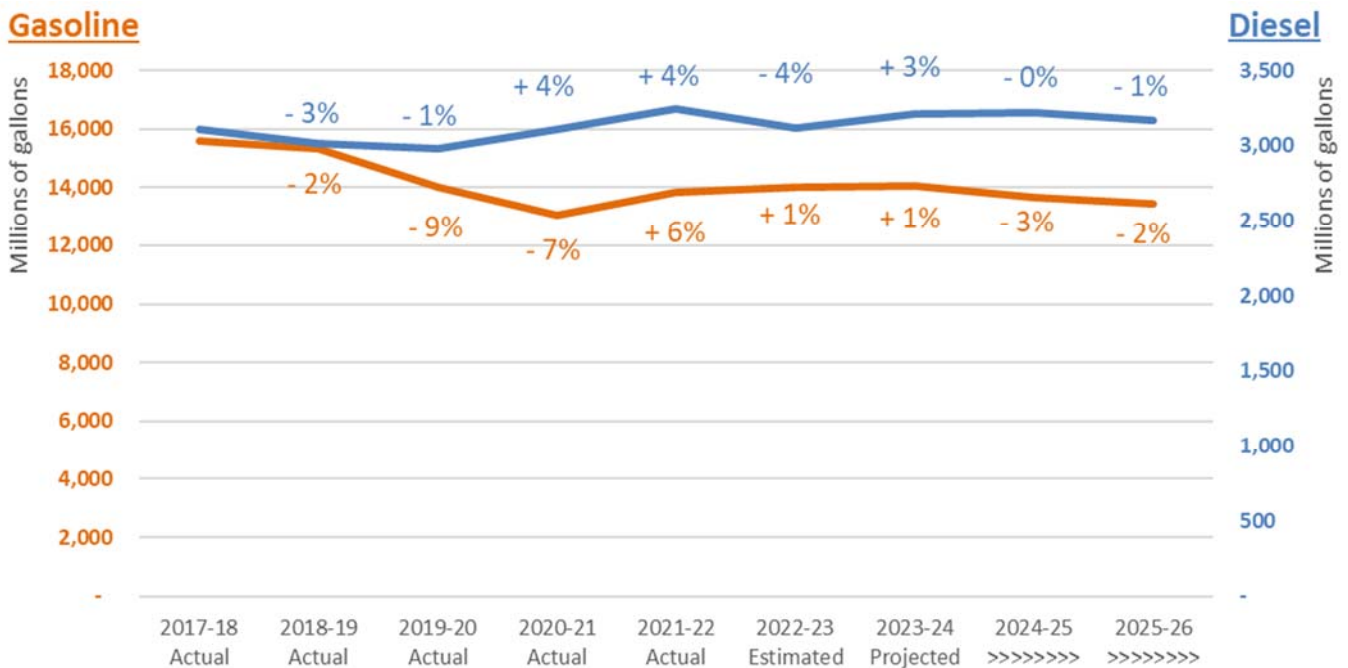
monthly allocations September 2022 through August 2023. Cities and counties thus have two choices in the budgeting and accounting of RMRA revenues:

- 1) apply a 60 day accrual policy to RMRA funds (*recommended*); or
- 2) adjust RMRA budgets (especially in FY2017-18) to reflect a distributed cash basis.

Local Streets and Roads (HUTA and RMRA) Revenue Estimates for FY2022-23 and FY2023-24

We have computed revenue estimates for each city and county using a model reflecting the local allocation formulas, latest population figures used by the State Controller for allocations and estimates by the state Department of Finance (DOF) of statewide HUTA and RMRA tax revenues provided with the **Governor’s Revised Proposed 2023-24 Budget (released May 11, 2023)** and analyses of SB1(Beall), The Road Repair and Accountability Act of 2017.

Fuel consumption was sharply down during the height of the COVID-19 pandemic but has largely recovered to its prior, slightly declining trajectory. Recently, fuel prices have increased steeply but the price of fuel no longer has a direct effect on local streets and roads revenues because all rates are per gallon, regardless of price.



Despite lower fuel consumption, scheduled rate increases stipulated in SB1 have kept local allocations of revenue growing at a modest pace. Total LSR allocations (including HUTA, TCRF, and RMRA) in 2021-22 were 8.1 percent up from 2020-21. For the current year FY2022-23, the Department of Finance projects total LSR allocations to cities and counties in California will be 5.1 percent above the prior year. For the budget year FY2023-24, DOF estimates total statewide local streets and roads allocations will grow 11.4 percent.

HUTA (Highway Users Tax Account)

Revenues allocated to cities and counties through HUTA under Sections 2103-2107 of the Streets and Highways Code are derived from per gallon rates. As described above, these rates are adjusted annually on July 1. Revenue changes depend on the combined effects of 1) these rate adjustments, 2) taxable gallonage, and 3) the relative change of statutory transfers including the “weight fee offset” that pays state transportation bond debt.

Statewide fuel consumption (gallons) had been relatively flat in recent years. The COVID-19 pandemic and related restrictions caused a steep decline in fuel consumption in the spring of 2020. The effects of this are expected to ease up gradually as restrictions are lifted and travel resumes. Sec2104-2108 HUTA allocations (not including RMRA or the sec2103 variable fuel taxes) dropped 6.5 percent in 2019-20 from the prior 2018-19 year. But this drop-off was more than offset by the doubling of the Sec2103 allocations due to the reset of the formerly price-based rate. FY2019-20 contained the most dramatic fiscal and economic effects of the pandemic, those during the months of April through June 2020.

With a recovery in fuel consumption as the COVID effects eased and with additional rate adjustments kicking in each July 1, total HUTA revenue grew 8.3 percent in FY 2021-22. DOF estimates published with the Governor’s May Budget Revision show 4.5 percent growth in current year FY2022-23 and 9.5 percent growth in budget year FY2023-24.

RMRA (Road Maintenance and Rehabilitation Account)⁵

The Road Repair and Accountability Act (SB1) taxes that provide funding to cities and counties through the RMRA began on November 1, 2017 when the new per-gallon fuel excise taxes took effect. On January 1, 2018, the new vehicle registration tax, the “Transportation Improvement Fee,” took effect. Cities, counties and other recipients of these revenues saw the first full year of these revenues in FY2018-19. A \$100 zero emission vehicle registration tax (“Road Improvement Fee”) began on July 1, 2020.

DOF estimates FY2022-23 RMRA revenues will be 5.9 percent higher than FY2021-22 actuals and that FY2023-24 revenues will grow by 13.7 percent over the current year.

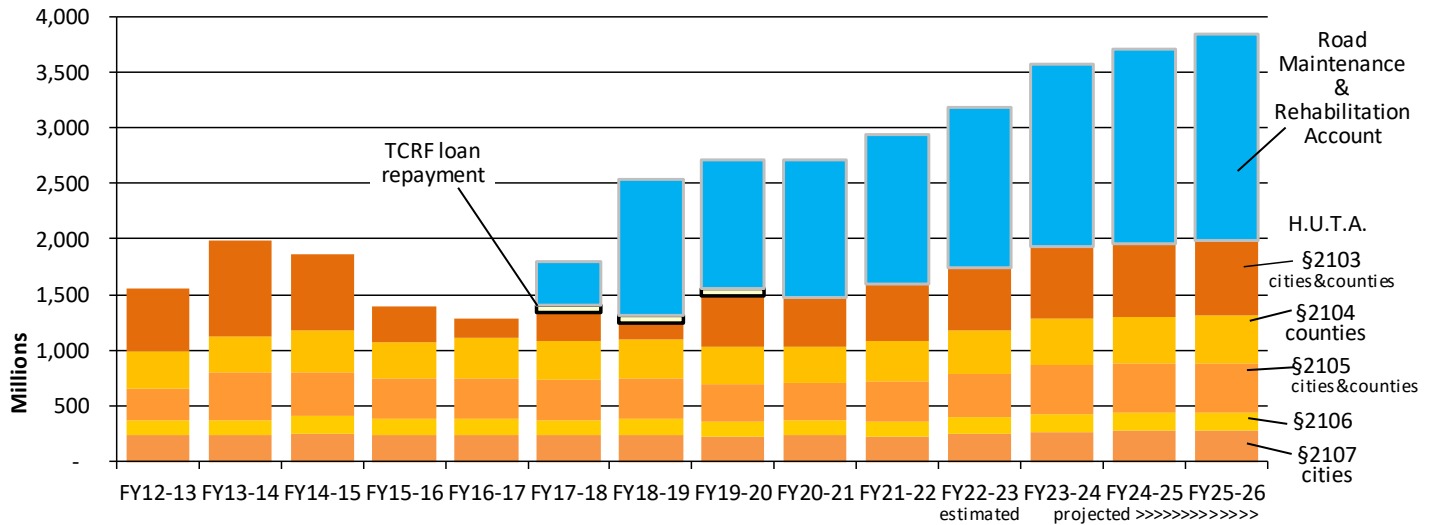
Why does city/county RMRA growth differ from city/county HUTA growth? Under SB1, various fixed-amount statutory allocations are made from the new SB1 tax rates prior to the city and county allocations.

Your Mileage Revenues May Vary

An individual city’s allocations will of course also be affected by change in the city’s population relative to the change in state population. Changes for allocations to counties will be affected other factors in the allocation rules including relative numbers of vehicle registrations, assessed values and maintained road miles.

⁵ Note that RMRA revenues are delayed 60 days from collection to allocation. That is, the revenues for a July 1 to June 30 fiscal year are allocated September 1 through August 31. These are spendable in the fiscal year because your accounting staff “accrues” them back into your fiscal year.

California Local Streets and Roads Program - State Funds to Cities and Counties



Looking Ahead: Long Term Estimates of Local Streets and Roads Funding

With the recovery from the COVID-19 pandemic of 2020, we can expect stable, modest year over year growth in local streets and roads revenues in future years. While fuel consumption may remain flat or in slight decline, annual cost of living adjustments will help to maintain revenues.

Due to complicated statutory transfers from these revenues before the city and county allocations are made (including the \$1.7 billion transfer for state transportation debt service), actual growth in funding allocated to cities and counties varies somewhat among the various categories of local streets and roads allocations and will not exactly mirror total tax collections. Taking all these factors into account, for the purposes of long-term transportation program planning, we estimate transportation allocations to cities and counties will increase in outyears at the following growth rates:

Estimated Annual Revenue Growth Rate over prior year

	<u>2024-25</u>	<u>2025-26</u>	<u>2026-27</u>	<u>Beyond</u>
HUTA 2103	2.4%	-0.7%	-0.7%	-1.9%
HUTA 2104	3.0%	1.6%	1.1%	0.9%
HUTA 2105	3.0%	1.6%	1.1%	0.9%
HUTA 2106	3.0%	1.6%	1.1%	0.9%
HUTA 2107	3.0%	1.6%	1.1%	0.9%
RMRA	7.6%	4.7%	6.6%	6.0%

Your Mileage Revenues May Vary

Allocations to each particular city also will be affected by annual changes in the city’s population relative to the change in state population in cities. The current forecast for California population, provided by the Demographics Unit of the California Department of Finance is as follows:⁶

California	<u>2022</u>	<u>2023</u>	<u>2024</u>	<u>2025</u>	<u>2026</u>	<u>2027</u>	<u>2028</u>	<u>2029</u>
Population	39,185,605	39,388,838	39,593,125	39,798,472	40,004,883	40,212,365	40,420,923	40,630,563
Population in Cities	32,713,003	32,892,492	33,072,965	33,254,428	33,436,888	33,620,348	33,804,815	33,990,294
percent change		0.55%	0.55%	0.55%	0.55%	0.55%	0.55%	0.55%
		<u>2030</u>	<u>2031</u>	<u>2032</u>	<u>2033</u>	<u>2034</u>	<u>2035</u>	<u>2036</u>
Population		40,825,471	41,011,197	41,197,768	41,385,188	41,573,460	41,762,589	41,952,578
Population in Cities		34,163,552	34,329,226	34,495,703	34,662,987	34,831,083	34,999,994	35,169,724
percent change		0.51%	0.48%	0.48%	0.48%	0.48%	0.48%	0.48%

If you think your city’s population growth will be significantly different from the statewide average in cities, then you should adjust accordingly. For example, the City of Agatha’s planning department estimates the city will see average annual residential population growth of 1.5 percent annually over the next ten years. The city’s estimated HUTA 2105 allocation for FY2023-24 is \$381,200. The long term projection of Section 2105 revenue would be:

$$\$381,200 \times \text{Sec2105 growth} \times \text{Agartha Population Growth} \div \text{Statewide City Population Growth}$$

$$\text{So, for 2024-25, the city would estimate } \$381,200 \times 1.014 \times 1.015 \div 1.0055 = \$390,189$$

And long term ...

	<u>2023-24</u>	<u>2024-25</u>	<u>2025-26</u>	<u>2026-27</u>	<u>2027-28</u>	<u>2028-29</u>	<u>2029-30</u>
HUTA Sec2015	\$ 381,200						
2105 growth		1.4%	1.1%	0.6%	1.0%	1.0%	1.0%
Agartha pop		1.5%	1.5%	1.5%	1.5%	1.5%	1.5%
Cities pop		0.55%	0.55%	0.55%	0.55%	0.55%	0.55%
HUTA Sec2015	\$ 390,189	\$ 398,208	\$ 404,382	\$ 412,421	\$ 420,619	\$ 428,981	

Changes for allocations to counties will be affected by other factors in the allocation rules, including relative numbers of vehicle registrations, assessed values and maintained road miles.

mjgc

ATTACHMENTS:

- A) Local Streets and Roads - Projected Individual City Revenues – FY2022-23
- B) Local Streets and Roads - Projected Individual City Revenues – FY2023-24
- C) Local Streets and Roads - Projected Individual County Revenues – FY2022-23 (from CSAC)
- D) Local Streets and Roads - Projected Individual County Revenues – FY2023-24 (from CSAC)

⁶ See [http://www.dof.ca.gov/Forecasting/Demographics/projections/_California population in cities estimated by author based on recent historic trend of proportion of population in cities.](http://www.dof.ca.gov/Forecasting/Demographics/projections/_California%20population%20in%20cities%20estimated%20by%20author%20based%20on%20recent%20historic%20trend%20of%20proportion%20of%20population%20in%20cities)

Local Streets and Roads - Projected FY2022-23 Revenues

Based on State Dept of Finance statewide revenue projections

Estimated May 2023

	Highway Users Tax Acct (HUTA) ⁽¹⁾ Streets & Highways Code					TOTAL HUTA	Road Mntnc Rehab Acct	TOTAL
	Sec2103 ⁽⁵⁾	Sec2105 ⁽³⁾	Sec2106 ⁽³⁾	Sec2107 ⁽³⁾	Sec2107.5 ⁽⁴⁾			
ALAMEDA COUNTY								
ALAMEDA	643,390	459,444	257,030	549,742	7,500	1,917,107	1,679,936	3,597,042
ALBANY	183,021	130,695	76,550	156,382	4,000	550,648	477,881	1,028,529
BERKELEY	1,035,440	739,407	410,727	884,728	10,000	3,080,302	2,703,606	5,783,909
DUBLIN	605,806	432,605	242,296	517,629	7,500	1,805,837	1,581,802	3,387,639
EMERYVILLE	103,584	73,969	45,408	88,507	3,000	314,469	270,465	584,934
FREMONT	1,876,929	1,340,313	740,619	1,603,735	10,000	5,571,595	4,900,791	10,472,387
HAYWARD	1,338,495	955,817	529,534	1,143,671	10,000	3,977,518	3,494,902	7,472,419
LIVERMORE	715,872	511,203	285,446	611,674	7,500	2,131,695	1,869,191	4,000,886
NEWARK	387,054	276,395	156,538	330,717	6,000	1,156,705	1,010,626	2,167,331
OAKLAND	3,535,882	2,524,969	1,390,983	3,021,220	10,000	10,483,055	9,232,432	19,715,487
PIEDMONT	91,911	65,633	40,832	78,533	3,000	279,908	239,985	519,893
PLEASANTON	650,949	464,842	259,994	556,201	7,500	1,939,486	1,699,673	3,639,160
SAN LEANDRO	741,652	529,613	295,552	633,701	7,500	2,208,018	1,936,504	4,144,521
UNION CITY	571,733	408,274	228,938	488,515	7,500	1,704,959	1,492,833	3,197,793
ALPINE COUNTY								
AMADOR COUNTY								
AMADOR	1,633	1,166	5,610	1,395	1,000	10,804	4,263	15,067
IONE	72,555	51,812	40,800	61,995	2,000	229,161	189,447	418,608
JACKSON	41,396	29,561	25,339	35,371	1,000	132,667	108,088	240,755
PLYMOUTH	8,727	6,232	9,130	7,456	1,000	32,544	22,786	55,330
SUTTER CREEK	21,576	15,407	15,505	18,435	1,000	71,923	56,335	128,258
BUTTE COUNTY								
BIGGS	16,025	11,443	12,028	13,692	1,000	54,187	41,841	96,029
CHICO	839,938	599,798	383,642	717,681	10,000	2,551,060	2,193,135	4,744,195
GRIDLEY	59,796	42,700	31,770	51,093	2,000	187,359	156,132	343,491
OROVILLE	162,703	116,186	78,185	139,021	4,000	500,094	424,828	924,922
PARADISE	62,898	44,916	33,169	86,159	6,000	233,142	164,231	397,374
CALAVERAS COUNTY								
ANGELS CAMP	29,804	21,283	27,212	25,466	1,000	104,766	77,821	182,586
COLUSA COUNTY								
COLUSA	52,106	37,209	19,464	44,522	2,000	155,302	136,053	291,355
WILLIAMS	45,412	32,429	17,580	38,802	2,000	136,224	118,575	254,799

Local Streets and Roads - Projected FY2022-23 Revenues

Based on State Dept of Finance statewide revenue projections

Estimated May 2023

	Highway Users Tax Acct (HUTA) ⁽¹⁾ Streets & Highways Code					TOTAL HUTA	Road Mntnc Rehab Acct	TOTAL
	Sec2103 ⁽⁵⁾	Sec2105 ⁽³⁾	Sec2106 ⁽³⁾	Sec2107 ⁽³⁾	Sec2107.5 ⁽⁴⁾			
CONTRA COSTA COUNTY								
ANTIOCH	941,448	672,287	402,612	804,417	10,000	2,830,765	2,458,186	5,288,951
BRENTWOOD	525,243	375,075	226,743	448,792	7,500	1,583,353	1,371,445	2,954,798
CLAYTON	90,319	64,496	42,965	77,172	3,000	277,952	235,828	513,780
CONCORD	1,024,975	731,933	437,907	875,786	10,000	3,080,602	2,676,281	5,756,882
DANVILLE	356,442	254,535	155,416	304,561	6,000	1,076,953	930,695	2,007,648
EL CERRITO	211,764	151,220	94,282	180,941	5,000	643,207	552,930	1,196,138
HERCULES	212,989	152,095	94,799	181,987	6,000	647,870	556,128	1,203,997
LAFAYETTE	207,535	148,201	92,495	177,328	6,000	631,559	541,889	1,173,448
MARTINEZ	306,426	218,818	134,281	261,824	6,000	927,349	800,098	1,727,447
MORAGA	140,996	100,685	64,379	120,474	4,000	430,534	368,151	798,686
OAKLEY	363,536	259,601	158,413	310,622	6,000	1,098,172	949,218	2,047,390
ORINDA	159,348	113,790	72,133	136,154	4,000	485,424	416,067	901,491
PINOLE	154,564	110,374	70,112	132,066	4,000	471,116	403,577	874,692
PITTSBURG	622,386	444,445	267,791	531,795	7,500	1,873,918	1,625,092	3,499,010
PLEASANT HILL	281,715	201,173	123,840	240,711	6,000	853,438	735,578	1,589,016
RICHMOND	946,077	675,592	404,568	808,372	10,000	2,844,609	2,470,272	5,314,881
SAN PABLO	262,891	187,730	115,885	224,626	6,000	797,132	686,426	1,483,558
SAN RAMON	690,574	493,138	296,605	590,058	7,500	2,077,875	1,803,136	3,881,011
WALNUT CREEK	573,904	409,824	247,305	490,370	7,500	1,728,904	1,498,503	3,227,407
DEL NORTE COUNTY								
CRESCENT CITY	55,086	39,337	23,999	47,068	2,000	167,490	143,833	311,323
EL DORADO COUNTY								
PLACERVILLE	88,253	63,022	63,596	75,408	3,000	293,279	230,436	523,714
SOUTH LAKE TAHOE	174,899	124,895	121,321	1,194,629	5,000	1,620,743	456,672	2,077,416

Local Streets and Roads - Projected FY2022-23 Revenues

Based on State Dept of Finance statewide revenue projections

Estimated May 2023

	Highway Users Tax Acct (HUTA) ⁽¹⁾ Streets & Highways Code					TOTAL HUTA	Road Mntnc Rehab Acct	TOTAL
	Sec2103 ⁽⁵⁾	Sec2105 ⁽³⁾	Sec2106 ⁽³⁾	Sec2107 ⁽³⁾	Sec2107.5 ⁽⁴⁾			
FRESNO COUNTY								
CLOVIS	1,009,514	720,893	363,650	862,575	10,000	2,966,632	2,635,910	5,602,542
COALINGA	147,486	105,320	57,227	126,019	4,000	440,052	385,097	825,148
FIREBAUGH	68,890	49,194	29,288	58,863	2,000	208,235	179,877	388,112
FOWLER	56,833	40,584	25,002	48,561	2,000	172,980	148,395	321,375
FRESNO	4,438,057	3,169,211	1,582,389	3,792,080	20,000	13,001,736	11,588,072	24,589,808
HURON	50,368	35,967	22,704	43,036	2,000	154,075	131,513	285,588
KERMAN	135,829	96,995	53,083	116,059	4,000	405,966	354,659	760,625
KINGSBURG	102,090	72,902	41,090	87,231	3,000	306,313	266,564	572,877
MENDOTA	102,751	73,375	41,325	87,796	3,000	308,246	268,291	576,537
ORANGE COVE	78,515	56,067	32,709	67,086	2,000	236,378	205,007	441,385
PARLIER	118,931	84,929	47,076	101,620	4,000	356,556	310,537	667,093
REEDLEY	203,935	145,630	77,293	174,252	6,000	607,110	532,489	1,139,599
SANGER	216,956	154,928	81,921	185,377	6,000	645,182	566,487	1,211,669
SAN JOAQUIN	30,196	21,563	15,534	25,801	1,000	94,094	78,844	172,937
SELMA	201,772	144,085	76,524	172,403	5,000	599,784	526,841	1,126,625
GLENN COUNTY								
ORLAND	67,486	48,192	25,977	57,663	2,000	201,318	176,210	377,529
WILLOWS	52,465	37,466	21,264	44,829	2,000	158,024	136,991	295,015
HUMBOLDT COUNTY								
ARCATA	151,772	108,380	77,590	129,681	4,000	471,423	396,287	867,710
BLUE LAKE	9,829	7,019	9,514	8,398	1,000	35,759	25,663	61,422
EUREKA	220,221	157,260	110,418	188,167	6,000	682,066	575,013	1,257,079
FERNDALE	11,371	8,120	10,254	9,716	1,000	40,462	29,692	70,154
FORTUNA	102,213	72,990	53,821	87,335	3,000	319,359	266,884	586,243
RIO DELL	27,649	19,744	18,060	23,625	1,000	90,078	72,194	162,272
TRINIDAD	2,506	1,790	6,002	2,141	1,000	13,439	6,544	19,983
IMPERIAL COUNTY								
BRAWLEY	220,017	157,114	98,301	187,993	6,000	669,425	574,480	1,243,905
CALEXICO	316,115	225,738	139,140	270,104	6,000	957,097	825,399	1,782,496
CALIPATRIA	53,968	38,538	27,735	46,112	2,000	168,353	140,913	309,266
EL CENTRO	365,895	261,285	160,295	312,638	6,000	1,106,113	955,378	2,061,491
HOLTVILLE	45,429	32,441	24,106	38,816	2,000	142,792	118,618	261,409
IMPERIAL	175,617	125,408	79,432	150,055	4,000	534,512	458,548	993,060
WESTMORLAND	16,490	11,775	11,808	14,090	1,000	55,163	43,056	98,219
INYO COUNTY								
BISHOP	31,584	22,554	18,564	26,987	1,000	100,688	82,467	183,156

Local Streets and Roads - Projected FY2022-23 Revenues

Based on State Dept of Finance statewide revenue projections

Estimated May 2023

	Highway Users Tax Acct (HUTA) ⁽¹⁾ Streets & Highways Code					TOTAL HUTA	Road Mntnc Rehab Acct	TOTAL
	Sec2103 ⁽⁵⁾	Sec2105 ⁽³⁾	Sec2106 ⁽³⁾	Sec2107 ⁽³⁾	Sec2107.5 ⁽⁴⁾			
KERN COUNTY								
ARVIN	161,217	115,125	50,284	137,751	5,000	469,377	420,948	890,325
BAKERSFIELD	3,337,686	2,383,437	946,453	2,851,872	10,000	9,529,447	8,714,927	18,244,374
CALIFORNIA CITY	122,564	87,523	39,379	104,724	3,000	357,189	320,022	677,211
DELANO	421,038	300,663	123,586	359,754	7,500	1,212,542	1,099,360	2,311,902
MARICOPA	8,367	5,975	7,161	7,149	1,000	29,653	21,848	51,500
MCFARLAND	115,739	82,649	37,453	98,893	3,000	337,734	302,203	639,938
RIDGECREST	229,070	163,579	69,427	195,728	6,000	663,804	598,118	1,261,922
SHAFTER	167,233	119,421	51,981	142,892	5,000	486,527	436,658	923,185
TAFT	70,996	50,698	24,830	60,662	2,000	209,187	185,376	394,563
TEHACHAPI	106,629	76,144	34,883	91,109	3,000	311,764	278,416	590,180
WASCO	221,356	158,070	67,251	189,137	6,000	641,813	577,976	1,219,789
KINGS COUNTY								
AVENAL	111,829	79,857	38,517	95,552	4,000	329,755	291,993	621,748
CORCORAN	179,976	128,521	59,064	153,780	5,000	526,341	469,930	996,271
HANFORD	475,912	339,848	148,290	406,641	7,500	1,378,191	1,242,639	2,620,830
LEMOORE	220,882	157,732	71,397	188,732	6,000	644,744	576,739	1,221,483
LAKE COUNTY								
CLEARLAKE	137,756	98,371	55,658	117,705	4,000	413,490	359,689	773,179
LAKEPORT	40,808	29,141	19,866	34,868	1,000	125,684	106,553	232,237
LASSEN COUNTY								
SUSANVILLE	131,511	93,912	45,832	194,956	4,000	470,211	343,383	813,594
LOS ANGELES COUNTY								
AGOURA HILLS	165,209	117,975	71,225	141,162	5,000	500,571	431,371	931,943
ALHAMBRA	674,419	481,602	275,962	576,254	7,500	2,015,737	1,760,954	3,776,691
ARCADIA	464,442	331,658	191,538	396,841	7,500	1,391,979	1,212,691	2,604,670
ARTESIA	134,596	96,115	58,917	115,005	4,000	408,634	351,440	760,074
AVALON	28,114	20,076	16,104	24,022	1,000	89,317	73,409	162,726
AZUSA	411,928	294,157	170,423	351,970	6,000	1,234,479	1,075,572	2,310,051
BALDWIN PARK	588,223	420,049	241,306	502,604	7,500	1,759,681	1,535,890	3,295,571
BELL	278,728	199,039	116,867	238,158	6,000	838,792	727,777	1,566,568
BELLFLOWER	643,921	459,823	263,700	550,195	7,500	1,925,139	1,681,321	3,606,460
BELL GARDENS	321,764	229,772	134,171	274,930	6,000	966,638	840,149	1,806,787
BEVERLY HILLS	267,013	190,674	112,158	228,148	6,000	803,993	697,190	1,501,183
BRADBURY	7,510	5,363	7,820	6,417	1,000	28,110	19,610	47,720
BURBANK	875,122	624,923	356,659	747,744	10,000	2,614,447	2,285,003	4,899,450
CALABASAS	189,650	135,429	81,052	162,045	5,000	573,176	495,188	1,068,364
CARSON	766,191	547,136	312,861	654,668	7,500	2,288,355	2,000,576	4,288,932
CERRITOS	403,071	287,832	166,862	344,402	6,000	1,208,167	1,052,446	2,260,613
CLAREMONT	305,699	218,299	127,712	261,203	6,000	918,914	798,201	1,717,115
COMMERCE	101,045	72,156	45,427	86,338	3,000	307,966	263,836	571,803

Local Streets and Roads - Projected FY2022-23 Revenues

Based on State Dept of Finance statewide revenue projections

Estimated May 2023

	Highway Users Tax Acct (HUTA) ⁽¹⁾ Streets & Highways Code					TOTAL HUTA	Road Mntnc Rehab Acct	TOTAL
	Sec2103 ⁽⁵⁾	Sec2105 ⁽³⁾	Sec2106 ⁽³⁾	Sec2107 ⁽³⁾	Sec2107.5 ⁽⁴⁾			
COMPTON	784,656	560,322	320,285	670,446	7,500	2,343,209	2,048,791	4,392,000
COVINA	418,899	299,136	173,226	357,927	6,000	1,255,188	1,093,775	2,348,964
CUDAHY	185,952	132,788	79,565	158,886	5,000	562,191	485,533	1,047,723
CULVER CITY	330,213	235,805	137,568	282,150	6,000	991,736	862,210	1,853,946
DIAMOND BAR	448,744	320,448	185,226	383,428	7,500	1,345,346	1,171,703	2,517,049
DOWNEY	930,216	664,266	378,810	794,819	10,000	2,778,111	2,428,857	5,206,968
DUARTE	176,956	126,364	75,948	151,199	5,000	535,467	462,044	997,511
EL MONTE	890,885	636,180	362,996	761,213	10,000	2,661,274	2,326,162	4,987,436
EL SEGUNDO	141,209	100,837	61,576	120,655	4,000	428,276	368,706	796,982
GARDENA	497,332	355,144	204,762	424,944	7,500	1,489,682	1,298,569	2,788,251
GLENDALE	1,599,638	1,142,300	647,964	1,366,805	10,000	4,766,707	4,176,766	8,943,473
GLENORA	428,622	306,078	177,135	366,234	7,500	1,285,570	1,119,161	2,404,731
HAWAIIAN GARDENS	113,878	81,320	50,587	97,303	3,000	346,087	297,343	643,431
HAWTHORNE	718,509	513,086	293,690	613,927	7,500	2,146,711	1,876,076	4,022,787
HERMOSA BEACH	160,948	114,932	69,512	137,521	4,000	486,913	420,245	907,158
HIDDEN HILLS	14,188	10,131	10,504	12,123	1,000	47,946	37,045	84,992
HUNTINGTON PARK	446,695	318,985	184,402	381,677	7,500	1,339,259	1,166,353	2,505,612
INDUSTRY	3,576	2,553	6,238	3,055	1,000	16,421	9,336	25,757
INGLEWOOD	886,077	632,746	361,063	757,105	10,000	2,646,991	2,313,607	4,960,598
IRWINDALE	12,253	8,750	9,727	10,470	1,000	42,199	31,994	74,193
LA CANADA FLINTRIDGE	167,731	119,777	72,239	143,317	5,000	508,065	437,958	946,022
LA HABRA HEIGHTS	46,172	32,971	23,364	39,451	2,000	143,958	120,557	264,515
LAKEWOOD	671,978	479,859	274,981	574,169	7,500	2,008,486	1,754,581	3,763,067
LA MIRADA	402,018	287,080	166,439	343,502	6,000	1,205,039	1,049,696	2,254,735
LANCASTER	1,440,813	1,028,883	584,105	1,231,097	10,000	4,294,899	3,762,063	8,056,962
LA PUENTE	310,360	221,628	129,586	265,186	6,000	932,760	810,372	1,743,132
LA VERNE	268,507	191,741	112,758	229,425	6,000	808,431	701,091	1,509,521
LAWNDALE	259,495	185,305	109,135	221,724	6,000	781,659	677,559	1,459,217
LOMITA	170,915	122,050	73,519	146,038	5,000	517,522	446,271	963,793
LONG BEACH	3,789,206	2,705,867	1,528,319	3,237,671	10,000	11,271,063	9,893,877	21,164,939
LOS ANGELES	31,804,825	22,711,786	12,792,509	27,175,505	20,000	94,504,625	83,044,588	177,549,213
LYNWOOD	559,798	399,751	229,877	478,317	7,500	1,675,243	1,461,671	3,136,914
MALIBU	87,666	62,602	40,048	74,906	3,000	268,221	228,901	497,122
MANHATTAN BEACH	289,568	206,780	121,226	247,421	6,000	870,996	756,083	1,627,079
MAYWOOD	205,184	146,522	87,298	175,319	6,000	620,323	535,751	1,156,074
MONROVIA	309,071	220,707	129,067	264,084	6,000	928,929	807,004	1,735,933
MONTEBELLO	511,626	365,352	210,509	437,157	7,500	1,532,144	1,335,892	2,868,035
MONTEREY PARK	498,426	355,926	205,201	425,878	7,500	1,492,932	1,301,425	2,794,357
NORWALK	844,215	602,853	344,232	721,336	10,000	2,522,637	2,204,304	4,726,941
PALMDALE	1,382,291	987,092	560,575	1,181,093	10,000	4,121,051	3,609,256	7,730,307
PALOS VERDES ESTATES	109,021	77,852	48,634	93,152	3,000	331,659	284,661	616,319
PARAMOUNT	436,597	311,774	180,342	373,049	7,500	1,309,262	1,139,986	2,449,248

Local Streets and Roads - Projected FY2022-23 Revenues

Based on State Dept of Finance statewide revenue projections

Estimated May 2023

	Highway Users Tax Acct (HUTA) ⁽¹⁾ Streets & Highways Code					TOTAL HUTA	Road Mntnc Rehab Acct	TOTAL
	Sec2103 ⁽⁵⁾	Sec2105 ⁽³⁾	Sec2106 ⁽³⁾	Sec2107 ⁽³⁾	Sec2107.5 ⁽⁴⁾			
PASADENA	1,141,131	814,880	463,612	975,035	10,000	3,404,657	2,979,571	6,384,228
PICO RIVERA	507,349	362,297	208,789	433,502	7,500	1,519,437	1,324,723	2,844,159
POMONA	1,242,853	887,520	504,512	1,061,951	10,000	3,706,837	3,245,176	6,952,013
RANCHO PALOS VERDES	345,536	246,747	143,729	295,242	6,000	1,037,254	902,218	1,939,472
REDONDO BEACH	573,406	409,469	235,348	489,945	7,500	1,715,668	1,497,203	3,212,871
ROLLING HILLS ⁽²⁾								
ROLLING HILLS ESTATES	67,666	48,320	32,006	57,817	2,000	207,808	176,679	384,488
ROSEMEAD	417,316	298,005	172,589	356,574	7,500	1,251,984	1,089,640	2,341,624
SAN DIMAS	285,242	203,691	119,487	243,724	6,000	858,143	744,786	1,602,929
SAN FERNANDO	193,046	137,854	82,417	164,947	6,000	584,264	504,055	1,088,319
SAN GABRIEL	322,148	230,046	134,326	275,258	6,000	967,777	841,151	1,808,928
SAN MARINO	102,458	73,165	45,995	87,544	3,000	312,162	267,524	579,685
SANTA CLARITA	1,869,517	1,335,020	756,473	1,597,401	10,000	5,568,411	4,881,438	10,449,849
SANTA FE SPRINGS	153,168	109,377	66,384	130,874	4,000	463,803	399,932	863,734
SANTA MONICA	761,888	544,064	311,131	650,993	7,500	2,275,576	1,989,343	4,264,919
SIERRA MADRE	91,257	65,167	41,492	77,975	3,000	278,891	238,280	517,170
SIGNAL HILL	96,025	68,571	43,409	82,048	3,000	293,053	250,727	543,780
SOUTH EL MONTE	160,556	114,653	69,354	137,186	5,000	486,749	419,222	905,971
SOUTH GATE	761,301	543,644	310,895	650,490	7,500	2,273,830	1,987,809	4,261,638
SOUTH PASADENA	220,115	157,184	93,301	188,076	6,000	664,677	574,736	1,239,412
TEMPLE CITY	298,213	212,954	124,702	254,807	6,000	896,676	778,656	1,675,332
TORRANCE	1,198,886	856,123	486,834	1,024,383	10,000	3,576,226	3,130,374	6,706,600
VERNON	1,722	1,230	5,493	1,472	1,000	10,917	4,497	15,414
WALNUT	232,148	165,776	98,139	198,358	6,000	700,421	606,154	1,306,575
WEST COVINA	894,754	638,943	364,552	764,519	10,000	2,672,769	2,336,265	5,009,034
WEST HOLLYWOOD	291,405	208,092	121,965	248,990	6,000	876,452	760,879	1,637,331
WESTLAKE VILLAGE	66,506	47,492	31,540	56,826	2,000	204,365	173,653	378,017
WHITTIER	717,807	512,585	293,407	613,327	7,500	2,144,626	1,874,243	4,018,868

Local Streets and Roads - Projected FY2022-23 Revenues

Based on State Dept of Finance statewide revenue projections

Estimated May 2023

	Highway Users Tax Acct (HUTA) ⁽¹⁾ Streets & Highways Code					TOTAL HUTA	Road Mntnc Rehab Acct	TOTAL
	Sec2103 ⁽⁵⁾	Sec2105 ⁽³⁾	Sec2106 ⁽³⁾	Sec2107 ⁽³⁾	Sec2107.5 ⁽⁴⁾			
MADERA COUNTY								
CHOWCHILLA	157,503	112,472	44,568	134,577	4,000	453,121	411,250	864,371
MADERA	537,496	383,825	140,513	459,261	7,500	1,528,595	1,403,439	2,932,034
MARIN COUNTY								
BELVEDERE	17,331	12,376	12,507	14,808	1,000	58,022	45,252	103,273
CORTE MADERA	83,225	59,431	41,812	71,111	3,000	258,578	217,306	475,884
FAIRFAX	61,959	44,245	32,355	52,941	2,000	193,500	161,780	355,280
LARKSPUR	106,711	76,202	52,256	91,178	3,000	329,347	278,629	607,976
MILL VALLEY	115,274	82,317	56,065	98,495	3,000	355,151	300,988	656,139
NOVATO	433,797	309,774	197,718	370,657	7,500	1,319,446	1,132,675	2,452,122
ROSS	19,061	13,612	13,277	16,287	1,000	63,237	49,770	113,007
SAN ANSELMO	104,294	74,476	51,182	89,114	3,000	322,066	272,319	594,386
SAN RAFAEL	502,059	358,520	228,075	428,982	7,500	1,525,136	1,310,911	2,836,047
SAUSALITO	58,074	41,470	30,626	49,621	2,000	181,791	151,634	333,426
TIBURON	74,506	53,205	37,934	63,662	2,000	231,307	194,541	425,849
MARIPOSA COUNTY								
MENDOCINO COUNTY								
FORT BRAGG	58,392	41,698	30,903	49,893	2,000	182,886	152,466	335,352
POINT ARENA	3,755	2,682	6,479	3,209	1,000	17,124	9,805	26,929
UKIAH	135,543	96,791	65,393	115,814	4,000	417,542	353,913	771,455
WILLITS	40,384	28,838	22,853	34,506	2,000	128,581	105,445	234,026
MERCED COUNTY								
ATWATER	259,193	185,089	86,965	221,466	6,000	758,713	676,770	1,435,483
DOS PALOS	47,298	33,776	19,794	40,414	2,000	143,281	123,499	266,780
GUSTINE	49,617	35,431	20,529	42,395	2,000	149,971	129,552	279,523
LIVINGSTON	117,633	84,002	42,090	100,511	4,000	348,236	307,148	655,384
LOS BANOS	380,728	271,877	125,492	325,311	6,000	1,109,408	994,107	2,103,515
MERCED	727,007	519,155	235,263	621,188	7,500	2,110,112	1,898,265	4,008,377
MODOC COUNTY								
ALTURAS	22,253	15,891	14,788	20,495	1,000	74,427	58,104	132,531
MONO COUNTY								
MAMMOTH LAKES	60,123	42,934	58,704	1,903,390	2,000	2,067,150	156,984	2,224,134

Local Streets and Roads - Projected FY2022-23 Revenues

Based on State Dept of Finance statewide revenue projections

Estimated May 2023

	Highway Users Tax Acct (HUTA) ⁽¹⁾ Streets & Highways Code					TOTAL HUTA	Road Mntnc Rehab Acct	TOTAL
	Sec2103 ⁽⁵⁾	Sec2105 ⁽³⁾	Sec2106 ⁽³⁾	Sec2107 ⁽³⁾	Sec2107.5 ⁽⁴⁾			
MONTEREY COUNTY								
CARMEL-BY-THE-SEA	25,821	18,438	12,617	22,062	1,000	79,938	67,419	147,357
DEL REY OAKS	12,874	9,193	8,697	11,000	1,000	42,764	33,614	76,377
GONZALES	69,682	49,760	25,895	59,539	2,000	206,876	181,944	388,821
GREENFIELD	160,278	114,454	53,322	136,949	4,000	469,004	418,497	887,501
KING CITY	109,209	77,986	37,862	93,313	3,000	321,369	285,151	606,520
MARINA	177,813	126,976	58,631	151,932	6,000	521,351	464,282	985,633
MONTEREY	232,327	165,905	75,135	198,511	6,000	677,878	606,623	1,284,501
PACIFIC GROVE	122,131	87,214	41,774	104,354	4,000	359,473	318,893	678,365
SALINAS	1,319,001	941,897	404,113	1,127,015	10,000	3,802,025	3,444,002	7,246,027
SAND CITY	3,037	2,169	5,719	2,595	1,000	14,519	7,929	22,449
SEASIDE	267,005	190,668	85,633	228,141	6,000	777,447	697,169	1,474,616
SOLEDAD	225,323	160,903	73,014	192,527	6,000	657,767	588,335	1,246,102
NAPA COUNTY								
AMERICAN CANYON	176,801	126,253	63,406	151,067	5,000	522,526	461,639	984,165
CALISTOGA	42,596	30,418	18,920	36,396	2,000	130,330	111,221	241,551
NAPA	633,635	452,478	214,838	541,407	7,500	1,849,858	1,654,464	3,504,322
SAINT HELENA	44,523	31,794	19,558	38,042	2,000	135,917	116,252	252,168
YOUNTVILLE	24,400	17,424	12,888	20,849	1,000	76,561	63,710	140,271
NEVADA COUNTY								
GRASS VALLEY	111,160	79,379	102,970	94,980	3,000	391,488	290,245	681,734
NEVADA CITY	27,339	19,523	28,944	23,360	1,000	100,165	71,384	171,549
TRUCKEE	139,592	99,683	128,080	1,729,197	4,000	2,100,553	364,485	2,465,038

Local Streets and Roads - Projected FY2022-23 Revenues

Based on State Dept of Finance statewide revenue projections

Estimated May 2023

	Highway Users Tax Acct (HUTA) ⁽¹⁾ Streets & Highways Code					TOTAL HUTA	Road Mntnc Rehab Acct	TOTAL
	Sec2103 ⁽⁵⁾	Sec2105 ⁽³⁾	Sec2106 ⁽³⁾	Sec2107 ⁽³⁾	Sec2107.5 ⁽⁴⁾			
ORANGE COUNTY								
ALISO VIEJO	423,251	302,243	192,891	361,645	7,500	1,287,529	1,105,136	2,392,665
ANAHEIM	2,823,406	2,016,191	1,259,511	2,412,448	10,000	8,521,556	7,372,108	15,893,664
BREA	385,479	275,270	176,105	329,371	6,000	1,172,225	1,006,512	2,178,737
BUENA PARK	687,880	491,214	310,491	587,756	7,500	2,084,842	1,796,102	3,880,944
COSTA MESA	918,305	655,761	412,891	784,642	10,000	2,781,600	2,397,759	5,179,358
CYPRESS	411,348	293,743	187,602	351,475	6,000	1,250,169	1,074,059	2,324,228
DANA POINT	270,711	193,315	125,103	231,308	6,000	826,437	706,846	1,533,282
FOUNTAIN VALLEY	466,663	333,243	212,183	398,738	7,500	1,418,328	1,218,489	2,636,817
FULLERTON	1,178,641	841,666	528,584	1,007,085	10,000	3,565,976	3,077,513	6,643,488
GARDEN GROVE	1,404,462	1,002,925	628,938	1,200,037	10,000	4,246,362	3,667,148	7,913,509
HUNTINGTON BEACH	1,620,128	1,156,932	724,779	1,384,312	10,000	4,896,151	4,230,267	9,126,417
IRVINE	2,532,662	1,808,571	1,130,305	2,164,023	10,000	7,645,562	6,612,955	14,258,517
LAGUNA BEACH	187,788	134,099	88,252	160,455	5,000	575,595	490,329	1,065,924
LAGUNA HILLS	256,254	182,991	118,678	218,955	6,000	782,878	669,097	1,451,975
LAGUNA NIGUEL	526,843	376,218	238,927	450,159	7,500	1,599,646	1,375,623	2,975,269
LAGUNA WOODS	144,956	103,513	69,218	123,857	4,000	445,543	378,489	824,032
LA HABRA	512,500	365,975	232,553	437,903	7,500	1,556,432	1,338,172	2,894,604
LAKE FOREST	708,370	505,846	319,597	605,264	7,500	2,146,577	1,849,603	3,996,179
LA PALMA	127,217	90,845	61,335	108,700	4,000	392,097	332,172	724,268
LOS ALAMITOS	97,111	69,347	47,956	82,976	3,000	300,388	253,562	553,951
MISSION VIEJO	764,615	546,011	344,592	653,322	7,500	2,316,040	1,996,462	4,312,502
NEWPORT BEACH	695,154	496,408	313,724	593,971	7,500	2,106,757	1,815,094	3,921,850
ORANGE	1,139,555	813,755	511,214	973,688	10,000	3,448,212	2,975,457	6,423,669
PLACENTIA	422,957	302,033	192,760	361,394	7,500	1,286,643	1,104,369	2,391,012
RANCHO SANTA MARGARITA	391,422	279,514	178,746	334,449	6,000	1,190,131	1,022,029	2,212,160
SAN CLEMENTE	523,659	373,944	237,512	447,438	7,500	1,590,054	1,367,310	2,957,364
SAN JUAN CAPISTRANO	285,617	203,959	131,727	244,045	6,000	871,348	745,767	1,617,115
SANTA ANA	2,533,968	1,809,504	1,130,886	2,165,139	10,000	7,649,497	6,616,366	14,265,863
SEAL BEACH	206,058	147,146	96,371	176,065	5,000	630,640	538,031	1,168,672
STANTON	320,613	228,950	147,279	273,947	6,000	976,789	837,144	1,813,933
TUSTIN	656,321	468,678	296,466	560,791	7,500	1,989,756	1,713,699	3,703,454
VILLA PARK	47,861	34,178	26,069	40,895	2,000	151,004	124,969	275,973
WESTMINSTER	742,844	530,464	334,917	634,720	7,500	2,250,444	1,939,616	4,190,059
YORBA LINDA	555,880	396,953	251,831	474,969	7,500	1,687,132	1,451,440	3,138,572

Local Streets and Roads - Projected FY2022-23 Revenues

Based on State Dept of Finance statewide revenue projections

Estimated May 2023

	Highway Users Tax Acct (HUTA) ⁽¹⁾ Streets & Highways Code					TOTAL HUTA	Road Mntnc Rehab Acct	TOTAL
	Sec2103 ⁽⁵⁾	Sec2105 ⁽³⁾	Sec2106 ⁽³⁾	Sec2107 ⁽³⁾	Sec2107.5 ⁽⁴⁾			
PLACER COUNTY								
AUBURN	112,498	80,335	55,373	96,124	3,000	347,330	293,741	641,071
COLFAX	16,669	11,904	12,294	14,243	1,000	56,110	43,525	99,635
LINCOLN	418,385	298,768	192,881	357,488	6,000	1,273,522	1,092,433	2,365,955
LOOMIS	55,625	39,722	29,806	47,528	2,000	174,680	145,240	319,920
ROCKLIN	585,006	417,752	267,784	499,856	7,500	1,777,899	1,527,491	3,305,390
ROSEVILLE	1,232,935	880,437	559,054	1,053,476	10,000	3,735,903	3,219,278	6,955,182
PLUMAS COUNTY								
PORTOLA	17,143	12,242	8,619	128,198	1,000	167,201	44,761	211,962
RIVERSIDE COUNTY								
BANNING	252,058	179,994	116,015	215,370	6,000	769,437	658,141	1,427,578
BEAUMONT	446,451	318,810	201,786	381,468	7,500	1,356,014	1,165,713	2,521,727
BLYTHE	151,723	108,345	71,744	129,639	5,000	466,452	396,159	862,611
CALIMESA	88,972	63,535	44,057	76,022	2,000	274,585	232,311	506,896
CANYON LAKE	90,360	64,526	44,669	77,207	3,000	279,761	235,935	515,696
CATHEDRAL CITY	423,185	302,196	191,521	361,589	7,500	1,285,991	1,104,966	2,390,956
COACHELLA	344,148	245,756	156,647	294,056	6,000	1,046,607	898,595	1,945,202
CORONA	1,279,825	913,921	569,493	1,093,541	10,000	3,866,781	3,341,711	7,208,492
DESERT HOT SPRINGS	265,870	189,858	122,109	227,172	6,000	811,009	694,206	1,505,215
EASTVALE	570,851	407,644	256,675	487,761	7,500	1,730,431	1,490,531	3,220,963
HEMET	731,807	522,582	327,693	625,289	7,500	2,214,871	1,910,798	4,125,669
INDIAN WELLS	38,874	27,760	21,952	33,215	2,000	123,801	101,502	225,302
INDIO	727,652	519,615	325,859	621,739	7,500	2,202,365	1,899,948	4,102,313
JURUPA VALLEY	860,281	614,325	384,379	735,063	10,000	2,604,048	2,246,252	4,850,300
LAKE ELSINORE	584,614	417,472	262,747	499,521	7,500	1,771,856	1,526,468	3,298,324
LA QUINTA	309,062	220,701	141,167	264,077	6,000	941,007	806,983	1,747,990
MENIFEE	870,428	621,571	388,856	743,733	7,500	2,632,088	2,272,746	4,904,835
MORENO VALLEY	1,709,451	1,220,717	759,055	1,460,634	10,000	5,159,857	4,463,494	9,623,351
MURRIETA	907,620	648,130	405,266	775,512	10,000	2,746,528	2,369,857	5,116,385
NORCO	217,625	155,406	100,822	185,949	6,000	665,802	568,235	1,234,037
PALM DESERT	415,422	296,652	188,095	354,956	7,500	1,262,625	1,084,695	2,347,320
PALM SPRINGS	362,426	258,808	164,712	309,673	6,000	1,101,619	946,319	2,047,938
PERRIS	644,002	459,881	288,951	550,265	7,500	1,950,600	1,681,534	3,632,134
RANCHO MIRAGE	137,176	97,957	65,326	117,209	4,000	421,668	358,176	779,844
RIVERSIDE	2,594,679	1,852,857	1,149,642	2,217,013	10,000	7,824,190	6,774,885	14,599,075
SAN JACINTO	445,659	318,244	201,437	380,791	7,500	1,353,631	1,163,646	2,517,277
TEMECULA	897,350	640,797	400,735	766,737	10,000	2,715,619	2,343,043	5,058,662
WILDOMAR	299,756	214,056	137,060	256,125	6,000	912,998	782,684	1,695,682

Local Streets and Roads - Projected FY2022-23 Revenues

Based on State Dept of Finance statewide revenue projections

Estimated May 2023

	Highway Users Tax Acct (HUTA) ⁽¹⁾ Streets & Highways Code					TOTAL HUTA	Road Mntnc Rehab Acct	TOTAL
	Sec2103 ⁽⁵⁾	Sec2105 ⁽³⁾	Sec2106 ⁽³⁾	Sec2107 ⁽³⁾	Sec2107.5 ⁽⁴⁾			
SACRAMENTO COUNTY								
CITRUS HEIGHTS	716,043	511,326	335,174	611,820	7,500	2,181,864	1,869,639	4,051,502
ELK GROVE	1,444,675	1,031,640	671,356	1,234,396	10,000	4,392,067	3,772,145	8,164,212
FOLSOM	690,549	493,120	323,411	590,037	7,500	2,104,619	1,803,072	3,907,691
GALT	207,895	148,457	100,720	177,635	6,000	640,707	542,827	1,183,534
ISLETON	6,490	4,634	7,794	5,545	1,000	25,464	16,945	42,409
RANCHO CORDOVA	655,994	468,445	307,468	560,512	7,500	1,999,918	1,712,846	3,712,765
SACRAMENTO	4,247,068	3,032,826	1,964,347	3,628,891	20,000	12,893,133	11,089,388	23,982,521
SAN BENITO COUNTY								
HOLLISTER	347,381	248,064	149,414	296,818	6,000	1,047,677	907,035	1,954,712
SAN JUAN BAUTISTA	17,086	12,201	11,913	14,599	1,000	56,798	44,612	101,410
SAN BERNARDINO COUNTY								
ADELANTO	299,283	213,717	133,592	255,721	6,000	908,313	781,448	1,689,761
APPLE VALLEY	620,476	443,081	271,812	530,163	7,500	1,873,032	1,620,105	3,493,137
BARSTOW	208,433	148,842	94,496	178,095	5,000	634,867	544,234	1,179,101
BIG BEAR LAKE	41,200	29,421	22,530	410,729	2,000	505,880	107,576	613,457
CHINO	751,007	536,293	327,985	641,695	7,500	2,264,479	1,960,930	4,225,410
CHINO HILLS	640,590	457,445	280,468	547,350	7,500	1,933,353	1,672,625	3,605,977
COLTON	439,365	313,750	193,874	375,414	7,500	1,329,902	1,147,212	2,477,114
FONTANA	1,737,223	1,240,548	752,388	1,484,363	10,000	5,224,522	4,536,008	9,760,530
GRAND TERRACE	107,282	76,610	50,967	91,667	3,000	329,526	280,121	609,647
HESPERIA	818,974	584,829	357,233	699,769	7,500	2,468,306	2,138,399	4,606,704
HIGHLAND	464,769	331,891	204,806	397,120	7,500	1,406,086	1,213,544	2,619,630
LOMA LINDA	206,931	147,769	93,850	176,812	5,000	630,362	540,312	1,170,674
MONTCLAIR	310,719	221,884	138,513	265,493	6,000	942,610	811,310	1,753,920
NEEDLES	40,245	28,739	22,119	34,387	2,000	127,490	105,083	232,573
ONTARIO	1,465,442	1,046,470	635,431	1,252,141	10,000	4,409,484	3,826,370	8,235,854
RANCHO CUCAMONGA	1,424,299	1,017,090	617,726	1,216,987	10,000	4,286,102	3,718,943	8,005,044
REDLANDS	594,802	424,747	260,764	508,226	7,500	1,796,040	1,553,069	3,349,109
RIALTO	850,117	607,068	370,635	726,379	10,000	2,564,200	2,219,715	4,783,915
SAN BERNARDINO	1,824,047	1,302,550	789,751	1,558,550	10,000	5,484,899	4,762,713	10,247,612
TWENTYNINE PALMS	226,001	161,387	102,056	193,105	6,000	688,549	590,104	1,278,653
UPLAND	646,035	461,333	282,811	552,002	7,500	1,949,681	1,686,842	3,636,523
VICTORVILLE	1,114,788	796,068	484,532	952,526	10,000	3,357,914	2,910,787	6,268,702
YUCAIPA	447,104	319,276	197,204	382,026	7,500	1,353,110	1,167,418	2,520,529
YUCCA VALLEY	178,066	127,157	81,428	152,148	5,000	543,798	464,942	1,008,741

Local Streets and Roads - Projected FY2022-23 Revenues

Based on State Dept of Finance statewide revenue projections

Estimated May 2023

	Highway Users Tax Acct (HUTA) ⁽¹⁾ Streets & Highways Code					TOTAL HUTA	Road Mntnc Rehab Acct	TOTAL
	Sec2103 ⁽⁵⁾	Sec2105 ⁽³⁾	Sec2106 ⁽³⁾	Sec2107 ⁽³⁾	Sec2107.5 ⁽⁴⁾			
SAN DIEGO COUNTY								
CARLSBAD	943,554	673,791	444,146	806,216	10,000	2,877,707	2,463,686	5,341,393
CHULA VISTA	2,259,478	1,613,490	1,056,877	1,930,602	10,000	6,870,446	5,899,651	12,770,097
CORONADO	192,474	137,446	94,421	164,459	5,000	593,800	502,563	1,096,363
DEL MAR	32,172	22,974	19,780	27,489	1,000	103,414	84,002	187,416
EL CAJON	866,705	618,913	408,362	740,553	10,000	2,644,533	2,263,027	4,907,560
ENCINITAS	502,165	358,595	238,622	429,073	7,500	1,535,956	1,311,188	2,847,143
ESCONDIDO	1,231,523	879,429	578,232	1,052,270	10,000	3,751,453	3,215,591	6,967,044
TIMPERIAL BEACH	216,393	154,526	105,559	184,896	6,000	667,373	565,016	1,232,389
LA MESA	493,724	352,568	234,692	421,861	7,500	1,510,345	1,289,148	2,799,493
LEMON GROVE	222,980	159,230	108,626	190,525	6,000	687,361	582,217	1,269,578
NATIONAL CITY	501,806	358,339	238,455	428,766	7,500	1,534,866	1,310,250	2,845,116
OCEANSIDE	1,412,642	1,008,766	662,566	1,207,026	10,000	4,301,000	3,688,505	7,989,505
POWAY	398,034	284,236	190,136	340,099	6,000	1,218,504	1,039,294	2,257,799
SAN DIEGO	11,269,004	8,047,182	5,251,967	9,628,755	20,000	34,216,908	29,424,145	63,641,053
SAN MARCOS	768,313	548,651	362,548	656,482	7,500	2,343,495	2,006,118	4,349,613
SANTEE	484,410	345,917	230,355	413,902	7,500	1,482,083	1,264,828	2,746,911
SOLANA BEACH	105,282	75,182	53,822	89,958	3,000	327,244	274,899	602,142
VISTA	818,705	584,636	386,012	699,539	10,000	2,498,893	2,137,695	4,636,588
SAN FRANCISCO COUNTY								
SAN FRANCISCO	7,134,434	5,094,690	1,917,936	6,095,988	20,000	20,263,049	18,628,498	38,891,547
SAN JOAQUIN COUNTY								
ESCALON	60,727	43,365	30,103	51,888	2,000	188,082	158,562	346,644
LATHROP	255,764	182,641	111,369	218,537	6,000	774,311	667,818	1,442,129
LODI	543,431	388,063	231,231	464,332	7,500	1,634,557	1,418,935	3,053,491
MANTECA	709,056	506,336	300,242	605,850	7,500	2,128,983	1,851,393	3,980,376
RIPON	130,441	93,148	59,151	111,455	4,000	398,195	340,591	738,786
STOCKTON	2,640,467	1,885,554	1,105,002	2,256,136	10,000	7,897,159	6,894,440	14,791,599
TRACY	771,742	551,100	326,361	659,411	7,500	2,316,114	2,015,070	4,331,184
SAN LUIS OBISPO COUNTY								
ARROYO GRANDE	149,674	106,882	81,034	127,888	4,000	469,478	390,809	860,287
ATASCADERO	251,274	179,435	132,782	214,700	6,000	784,192	656,095	1,440,286
EL PASO DE ROBLES	256,017	182,822	135,198	218,753	6,000	798,790	668,479	1,467,268
GROVER BEACH	104,123	74,354	57,833	88,967	3,000	328,277	271,872	600,149
MORRO BAY	86,123	61,500	48,665	73,587	3,000	272,875	224,872	497,748
PISMO BEACH	65,698	46,915	38,262	56,136	2,000	209,011	171,543	380,553
SAN LUIS OBISPO	389,005	277,788	202,933	332,384	6,000	1,208,111	1,015,720	2,223,831

Local Streets and Roads - Projected FY2022-23 Revenues

Based on State Dept of Finance statewide revenue projections

Estimated May 2023

	Highway Users Tax Acct (HUTA) ⁽¹⁾ Streets & Highways Code					TOTAL HUTA	Road Mntnc Rehab Acct	TOTAL
	Sec2103 ⁽⁵⁾	Sec2105 ⁽³⁾	Sec2106 ⁽³⁾	Sec2107 ⁽³⁾	Sec2107.5 ⁽⁴⁾			
SAN MATEO COUNTY								
ATHERTON	56,988	40,695	29,928	48,693	2,000	178,304	148,799	327,103
BELMONT	229,593	163,952	106,034	196,175	6,000	701,753	599,482	1,301,236
BRISBANE	39,616	28,290	22,268	33,850	1,000	125,025	103,441	228,466
BURLINGAME	255,127	182,186	117,293	217,993	6,000	778,600	666,155	1,444,755
COLMA	11,894	8,493	10,044	10,163	1,000	41,594	31,056	72,650
DALY CITY	856,060	611,312	382,263	731,457	10,000	2,591,092	2,235,232	4,826,324
EAST PALO ALTO	245,250	175,133	112,938	209,553	6,000	748,873	640,364	1,389,238
FOSTER CITY	275,079	196,433	126,091	235,040	6,000	838,642	718,249	1,556,891
HALF MOON BAY	95,960	68,525	47,111	81,992	3,000	296,588	250,557	547,145
HILLSBOROUGH	92,874	66,321	45,751	79,356	3,000	287,301	242,500	529,801
MENLO PARK	278,834	199,115	127,746	238,248	6,000	849,943	728,054	1,577,997
MILLBRAE	190,433	135,988	88,768	162,715	5,000	582,904	497,235	1,080,139
PACIFICA	315,773	225,493	144,034	269,811	6,000	961,110	824,504	1,785,614
PORTOLA VALLEY	36,237	25,877	20,778	30,962	1,000	114,854	94,617	209,471
REDWOOD CITY	681,480	486,644	305,285	582,288	7,500	2,063,197	1,779,391	3,842,588
SAN BRUNO	359,307	256,581	163,230	307,009	6,000	1,092,127	938,176	2,030,303
SAN CARLOS	251,005	179,242	115,476	214,470	6,000	766,193	655,391	1,421,585
SAN MATEO	863,277	616,465	385,445	737,623	10,000	2,612,810	2,254,075	4,866,884
SOUTH SAN FRANCISCO	541,055	386,367	243,368	462,302	7,500	1,640,592	1,412,732	3,053,324
WOODSIDE	43,339	30,948	23,909	37,031	2,000	137,227	113,161	250,388
SANTA BARBARA COUNTY								
BUPELLTON	42,041	30,021	19,916	35,922	2,000	129,900	109,772	239,672
CARPINTERIA	107,388	76,686	43,412	91,757	3,000	322,243	280,398	602,641
GOLETA	266,899	190,592	100,765	228,051	6,000	792,307	696,891	1,489,198
GUADALUPE	69,747	49,806	29,878	59,595	2,000	211,027	182,115	393,142
LOMPOC	362,401	258,790	135,104	309,652	6,000	1,071,947	946,255	2,018,202
SANTA BARBARA	714,092	509,932	261,556	610,153	7,500	2,103,234	1,864,544	3,967,779
SANTA MARIA	897,228	640,709	327,403	766,633	10,000	2,641,973	2,342,723	4,984,696
SOLVANG	47,510	33,927	21,883	40,595	2,000	145,915	124,053	269,968

Local Streets and Roads - Projected FY2022-23 Revenues

Based on State Dept of Finance statewide revenue projections

Estimated May 2023

	Highway Users Tax Acct (HUTA) ⁽¹⁾ Streets & Highways Code					TOTAL HUTA	Road Mntnc Rehab Acct	TOTAL
	Sec2103 ⁽⁵⁾	Sec2105 ⁽³⁾	Sec2106 ⁽³⁾	Sec2107 ⁽³⁾	Sec2107.5 ⁽⁴⁾			
SANTA CLARA COUNTY								
CAMPBELL	358,254	255,829	153,557	306,109	6,000	1,079,749	935,427	2,015,176
CUPERTINO	494,345	353,011	210,065	422,391	7,500	1,487,311	1,290,768	2,778,079
GILROY	489,594	349,618	208,092	418,331	7,500	1,473,135	1,278,363	2,751,498
LOS ALTOS	258,507	184,600	112,139	220,880	6,000	782,126	674,980	1,457,106
LOS ALTOS HILLS	69,412	49,567	33,622	59,309	2,000	213,911	181,241	395,152
LOS GATOS	274,009	195,670	118,576	234,126	6,000	828,380	715,457	1,543,837
MILPITAS	669,504	478,092	282,796	572,055	7,500	2,009,948	1,748,122	3,758,070
MONTE SERENO	28,482	20,339	16,626	24,336	1,000	90,783	74,368	165,151
MORGAN HILL	379,193	270,781	162,251	324,000	6,000	1,142,226	990,100	2,132,325
MOUNTAIN VIEW	684,607	488,877	289,066	584,959	7,500	2,055,009	1,787,555	3,842,564
PALO ALTO	559,186	399,314	236,988	477,794	7,500	1,680,782	1,460,072	3,140,854
SAN JOSE	8,292,487	5,921,655	3,448,056	7,085,482	20,000	24,767,680	21,652,255	46,419,935
SANTA CLARA	1,062,265	758,562	445,880	907,648	10,000	3,184,355	2,773,647	5,958,003
SARATOGA	254,727	181,901	110,569	217,651	6,000	770,848	665,111	1,435,959
SUNNYVALE	1,275,384	910,750	534,373	1,089,747	10,000	3,820,254	3,330,116	7,150,370
SANTA CRUZ COUNTY								
CAPITOLA	80,433	57,437	36,177	68,726	3,000	245,773	210,016	455,789
SANTA CRUZ	528,418	377,343	210,939	451,505	7,500	1,575,705	1,379,736	2,955,441
SCOTTS VALLEY	100,311	71,632	43,932	85,710	3,000	304,584	261,918	566,502
WATSONVILLE	422,663	301,823	169,683	361,142	7,500	1,262,811	1,103,602	2,366,413
SHASTA COUNTY								
ANDERSON	91,135	65,079	53,744	77,870	3,000	290,828	237,960	528,788
REDDING	766,011	547,007	416,185	654,515	7,500	2,391,219	2,000,107	4,391,326
SHASTA LAKE	84,376	60,253	50,114	72,095	3,000	269,837	220,311	490,148
SIERRA COUNTY								
LOYALTON	6,025	4,302	6,299	21,403	1,000	39,028	15,730	54,759
SISKIYOU COUNTY								
DORRIS	7,012	5,007	8,462	5,992	1,000	27,474	18,310	45,783
DUNSMUIR	13,918	9,939	12,069	37,751	1,000	74,677	36,342	111,019
ETNA	5,584	3,987	7,716	4,771	1,000	23,058	14,579	37,638
FORT JONES	5,665	4,046	7,759	4,841	1,000	23,310	14,793	38,103
MONTAGUE	10,041	7,170	10,044	8,579	1,000	36,834	26,217	63,052
MOUNT SHASTA	26,482	18,911	18,631	91,063	1,000	156,086	69,146	225,232
TULELAKE	7,355	5,252	8,641	6,285	1,000	28,533	19,205	47,738
WEED	23,690	16,917	17,173	20,242	1,000	79,021	61,856	140,877
YREKA	63,519	45,359	37,974	54,939	2,000	203,790	165,851	369,642

Local Streets and Roads - Projected FY2022-23 Revenues

Based on State Dept of Finance statewide revenue projections

Estimated May 2023

	Highway Users Tax Acct (HUTA) ⁽¹⁾ Streets & Highways Code					TOTAL HUTA	Road Mntnc Rehab Acct	TOTAL
	Sec2103 ⁽⁵⁾	Sec2105 ⁽³⁾	Sec2106 ⁽³⁾	Sec2107 ⁽³⁾	Sec2107.5 ⁽⁴⁾			
SOLANO COUNTY								
BENICIA	221,119	157,901	103,098	188,934	6,000	677,052	577,357	1,254,409
DIXON	155,780	111,242	74,051	133,106	4,000	478,180	406,753	884,932
FAIRFIELD	983,726	702,478	442,111	840,541	10,000	2,978,855	2,568,576	5,547,432
RIO VISTA	81,551	58,236	41,053	69,681	2,000	252,521	212,936	465,458
SUISUN CITY	240,491	171,734	111,709	205,486	6,000	735,420	627,938	1,363,358
VACAVILLE	835,056	596,312	376,020	713,510	7,500	2,528,399	2,180,389	4,708,788
VALLEJO	1,026,869	733,286	461,290	877,404	10,000	3,108,849	2,681,226	5,790,075
SONOMA COUNTY								
CLOVERDALE	73,527	52,505	37,401	62,825	2,000	228,258	191,984	420,242
COTATI	61,878	44,187	32,236	52,871	2,000	193,172	161,567	354,739
HEALDSBURG	92,294	65,907	45,722	78,860	3,000	285,784	240,987	526,771
PETALUMA	488,296	348,691	221,306	417,222	7,500	1,483,015	1,274,974	2,757,989
ROHNERT PARK	359,699	256,861	164,287	307,344	6,000	1,094,191	939,200	2,033,391
SANTA ROSA	1,453,230	1,037,750	649,149	1,241,706	10,000	4,391,835	3,794,483	8,186,318
SEBASTOPOL	61,404	43,849	32,026	52,467	2,000	191,746	160,331	352,077
SONOMA	87,992	62,835	43,815	75,185	3,000	272,827	229,754	502,580
WINDSOR	213,968	152,794	99,672	182,824	6,000	655,258	558,685	1,213,944
STANISLAUS COUNTY								
CERES	399,985	285,629	169,383	341,766	6,000	1,202,762	1,044,389	2,247,151
HUGHSON	61,184	43,691	29,975	52,278	2,000	189,129	159,755	348,884
MODESTO	1,787,966	1,276,784	740,498	1,527,720	10,000	5,342,968	4,668,501	10,011,469
NEWMAN	100,866	72,028	46,303	86,184	3,000	308,381	263,367	571,749
OAKDALE	189,201	135,108	82,651	161,662	5,000	573,621	494,016	1,067,637
PATTERSON	198,939	142,062	86,658	169,983	5,000	602,643	519,445	1,122,088
RIVERBANK	202,523	144,622	88,133	173,045	6,000	614,323	528,802	1,143,124
TURLOCK	588,451	420,212	246,931	502,800	7,500	1,765,894	1,536,486	3,302,381
WATERFORD	74,278	53,042	35,363	63,466	2,000	228,149	193,945	422,094
SUTTER COUNTY								
LIVE OAK	76,686	54,761	35,171	65,524	2,000	234,142	200,232	434,374
YUBA CITY	572,908	409,113	231,693	489,519	7,500	1,710,733	1,495,903	3,206,636
TEHAMA COUNTY								
CORNING	67,192	47,982	31,013	57,412	2,000	205,599	175,443	381,042
RED BLUFF	121,005	86,409	52,006	103,392	3,000	365,812	315,951	681,763
TEHAMA	3,551	2,536	6,185	3,034	1,000	16,306	9,272	25,578
TRINITY COUNTY								

Local Streets and Roads - Projected FY2022-23 Revenues

Based on State Dept of Finance statewide revenue projections

Estimated May 2023

	Highway Users Tax Acct (HUTA) ⁽¹⁾ Streets & Highways Code					TOTAL HUTA	Road Mntnc Rehab Acct	TOTAL
	Sec2103 ⁽⁵⁾	Sec2105 ⁽³⁾	Sec2106 ⁽³⁾	Sec2107 ⁽³⁾	Sec2107.5 ⁽⁴⁾			
TULARE COUNTY								
DINUBA	205,119	146,475	83,584	175,263	6,000	616,442	535,580	1,152,022
EXETER	84,523	60,358	37,264	72,220	3,000	257,365	220,695	478,060
FARMERSVILLE	84,768	60,532	37,358	72,429	3,000	258,088	221,334	479,422
LINDSAY	103,649	74,016	44,611	88,563	3,000	313,839	270,636	584,474
PORTERVILLE	511,439	365,218	201,239	436,997	7,500	1,522,392	1,335,401	2,857,793
TULARE	567,039	404,922	222,594	484,504	7,500	1,686,559	1,480,577	3,167,136
VISALIA	1,159,931	828,305	450,319	991,098	10,000	3,439,652	3,028,659	6,468,311
WOODLAKE	62,433	44,583	28,780	53,346	2,000	191,142	163,017	354,158
TUOLUMNE COUNTY								
SONORA	42,441	30,307	30,559	36,264	1,000	140,570	110,816	251,386
VENTURA COUNTY								
CAMARILLO	577,594	412,459	262,573	493,523	7,500	1,753,648	1,508,138	3,261,786
FILLMORE	134,441	96,004	64,799	114,873	4,000	414,118	351,035	765,153
MOORPARK	295,601	211,088	136,723	252,575	6,000	901,987	771,835	1,673,822
OJAI	62,490	44,624	32,688	53,394	2,000	195,197	163,166	358,363
OXNARD	1,646,120	1,175,492	739,442	1,406,521	10,000	4,977,575	4,298,133	9,275,709
PORT HUENEME	181,192	129,389	85,664	154,819	5,000	556,065	473,106	1,029,171
SAN BUENAVENTURA	898,477	641,601	405,778	767,700	10,000	2,723,556	2,345,985	5,069,541
SANTA PAULA	252,181	180,082	117,345	215,475	6,000	771,082	658,461	1,429,542
SIMI VALLEY	1,029,808	735,384	464,390	879,915	10,000	3,119,497	2,688,899	5,808,396
THOUSAND OAKS	1,033,620	738,107	466,091	883,173	10,000	3,130,990	2,698,853	5,829,844
YOLO COUNTY								
DAVIS	529,545	378,147	248,096	452,467	7,500	1,615,756	1,382,678	2,998,434
WEST SACRAMENTO	431,324	308,008	202,969	368,543	7,500	1,318,344	1,126,217	2,444,561
WINTERS	60,588	43,266	32,637	51,769	2,000	190,260	158,199	348,459
WOODLAND	490,916	350,563	230,349	419,461	7,500	1,498,788	1,281,816	2,780,604
YUBA COUNTY								
MARYSVILLE	107,666	76,884	41,159	91,995	3,000	320,704	281,123	601,826
WHEATLAND	30,367	21,685	15,055	25,947	1,000	94,055	79,292	173,347
Statewide Total	\$ 270,091,500	\$ 192,872,000	\$ 114,260,269	\$ 236,002,500	\$ 2,709,500	\$ 815,935,769	\$ 705,227,500	\$ 1,521,163,269

Notes:

1. The Highway Users Tax is also known as the "Motor Vehicle Fuel Tax", the "Gasoline Excise Tax" and "Article XIX Revenues."
2. Rolling Hills has no public streets and is therefore not eligible for HUTA or RMRA allocations.
3. Str&HwysCode §§ 2103, 2105, 2106, 2107 and RMRA amounts are paid monthly. Includes special payments for snow removal.
4. Str&HwysCode § 2107.5 amounts are typically paid by the State Controller once per year in July.
5. Str&HwysCode § 2103 allocations replace the former Prop42 TCRF revenues. Previously adjusted annually by the BOE until July 2019.

Local Streets and Roads - Projected FY2023-24 Revenues

Based on State Dept of Finance statewide revenue projections

Estimated May 2023

	Highway Users Tax Acct (HUTA) ⁽¹⁾ Streets & Highways Code					TOTAL HUTA	Road Mntnc Rehab Acct	TOTAL
	Sec2103 ⁽⁵⁾	Sec2105 ⁽³⁾	Sec2106 ⁽³⁾	Sec2107 ⁽³⁾	Sec2107.5 ⁽⁴⁾			
ALAMEDA COUNTY								
ALAMEDA	730,147	494,466	276,644	593,087	7,500	2,101,844	1,909,811	4,011,656
ALBANY	207,700	140,658	82,130	168,712	4,000	603,199	543,272	1,146,471
BERKELEY	1,175,063	795,769	442,293	954,485	10,000	3,377,610	3,073,557	6,451,167
DUBLIN	687,495	465,582	260,764	558,442	7,500	1,979,783	1,798,249	3,778,032
EMERYVILLE	117,552	79,608	48,566	95,485	3,000	344,211	307,474	651,685
FREMONT	2,130,020	1,442,480	797,838	1,730,183	10,000	6,110,521	5,571,396	11,681,917
HAYWARD	1,518,982	1,028,676	570,339	1,233,845	10,000	4,361,842	3,973,130	8,334,972
LIVERMORE	812,402	550,171	307,269	659,902	7,500	2,337,244	2,124,964	4,462,208
NEWARK	439,246	297,464	168,338	356,793	6,000	1,267,841	1,148,916	2,416,756
OAKLAND	4,012,672	2,717,439	1,498,776	3,259,432	10,000	11,498,319	10,495,761	21,994,080
PIEDMONT	104,304	70,636	43,634	84,725	3,000	306,299	272,823	579,122
PLEASANTON	738,725	500,275	279,838	600,055	7,500	2,126,394	1,932,250	4,058,644
SAN LEANDRO	841,658	569,983	318,162	683,666	7,500	2,420,969	2,201,487	4,622,456
UNION CITY	648,827	439,395	246,368	527,032	7,500	1,869,122	1,697,107	3,566,229
ALPINE COUNTY								
AMADOR COUNTY								
AMADOR	1,853	1,255	5,673	1,505	1,000	11,286	4,846	16,132
IONE	82,339	55,761	43,599	66,883	2,000	250,582	215,370	465,952
JACKSON	46,978	31,814	26,937	38,160	1,000	144,888	122,878	267,767
PLYMOUTH	9,903	6,707	9,467	8,044	1,000	35,121	25,904	61,024
SUTTER CREEK	24,485	16,582	16,338	19,889	1,000	78,293	64,044	142,337
BUTTE COUNTY								
BIGGS	18,185	12,315	12,590	14,772	1,000	58,862	47,567	106,429
CHICO	953,198	645,519	413,102	774,268	10,000	2,796,087	2,493,235	5,289,322
GRIDLEY	67,859	45,955	33,868	55,121	2,000	204,803	177,496	382,299
OROVILLE	184,642	125,042	83,891	149,982	4,000	547,557	482,959	1,030,517
PARADISE	71,380	48,339	35,375	90,397	6,000	251,491	186,704	438,195
CALAVERAS COUNTY								
ANGELS CAMP	33,823	22,905	28,955	27,474	1,000	114,158	88,469	202,627
COLUSA COUNTY								
COLUSA	59,132	40,045	20,605	48,032	2,000	169,815	154,670	324,485
WILLIAMS	51,536	34,901	18,574	41,862	2,000	148,873	134,800	283,673

Local Streets and Roads - Projected FY2023-24 Revenues

Based on State Dept of Finance statewide revenue projections

Estimated May 2023

	Highway Users Tax Acct (HUTA) ⁽¹⁾ Streets & Highways Code					TOTAL HUTA	Road Mntnc Rehab Acct	TOTAL
	Sec2103 ⁽⁵⁾	Sec2105 ⁽³⁾	Sec2106 ⁽³⁾	Sec2107 ⁽³⁾	Sec2107.5 ⁽⁴⁾			
CONTRA COSTA COUNTY								
ANTIOCH	1,068,396	723,533	433,547	867,842	10,000	3,103,319	2,794,555	5,897,873
BRENTWOOD	596,068	403,666	244,002	484,177	7,500	1,735,413	1,559,108	3,294,521
CLAYTON	102,498	69,413	45,932	83,257	3,000	304,100	268,098	572,198
CONCORD	1,163,186	787,726	471,586	944,838	10,000	3,377,337	3,042,492	6,419,829
DANVILLE	404,506	273,937	167,128	328,574	6,000	1,180,145	1,058,047	2,238,193
EL CERRITO	240,319	162,747	101,240	195,207	5,000	704,514	628,591	1,333,105
HERCULES	241,709	163,689	101,798	196,336	6,000	709,531	632,226	1,341,757
LAFAYETTE	235,520	159,498	99,314	191,309	6,000	691,642	616,039	1,307,681
MARTINEZ	347,745	235,498	144,350	282,468	6,000	1,016,061	909,581	1,925,641
MORAGA	160,009	108,360	69,012	129,973	4,000	471,353	418,528	889,881
OAKLEY	412,556	279,389	170,359	335,113	6,000	1,203,418	1,079,105	2,282,522
ORINDA	180,834	122,464	77,369	146,889	4,000	531,556	473,000	1,004,556
PINOLE	175,406	118,787	75,190	142,479	4,000	515,863	458,801	974,663
PITTSBURG	706,310	478,324	288,242	573,725	7,500	2,054,101	1,847,464	3,901,565
PLEASANT HILL	319,703	216,507	133,097	259,690	6,000	934,996	836,232	1,771,228
RICHMOND	1,073,649	727,091	435,655	872,109	10,000	3,118,503	2,808,294	5,926,797
SAN PABLO	298,340	202,040	124,524	242,337	6,000	873,240	780,354	1,653,594
SAN RAMON	783,693	530,728	319,296	636,582	7,500	2,277,799	2,049,870	4,327,669
WALNUT CREEK	651,291	441,064	266,163	529,034	7,500	1,895,052	1,703,552	3,598,604
DEL NORTE COUNTY								
CRESCENT CITY	62,514	42,335	25,492	50,779	2,000	183,120	163,515	346,635
EL DORADO COUNTY								
PLACERVILLE	100,154	67,826	68,168	81,353	3,000	320,501	261,968	582,468
SOUTH LAKE TAHOE	198,482	134,415	130,381	1,206,412	5,000	1,674,691	519,161	2,193,853

Local Streets and Roads - Projected FY2023-24 Revenues

Based on State Dept of Finance statewide revenue projections

Estimated May 2023

	Highway Users Tax Acct (HUTA) ⁽¹⁾ Streets & Highways Code					TOTAL HUTA	Road Mntnc Rehab Acct	TOTAL
	Sec2103 ⁽⁵⁾	Sec2105 ⁽³⁾	Sec2106 ⁽³⁾	Sec2107 ⁽³⁾	Sec2107.5 ⁽⁴⁾			
FRESNO COUNTY								
CLOVIS	1,145,640	775,844	391,555	930,586	10,000	3,253,625	2,996,598	6,250,222
COALINGA	167,374	113,348	61,304	135,955	4,000	481,980	437,792	919,772
FIREBAUGH	78,179	52,944	31,192	63,504	2,000	227,820	204,490	432,310
FOWLER	64,496	43,678	26,573	52,389	2,000	189,137	168,700	357,837
FRESNO	5,036,499	3,410,789	1,705,066	4,091,071	20,000	14,263,425	13,173,737	27,437,162
HURON	57,159	38,709	24,096	46,430	2,000	168,394	149,509	317,903
KERMAN	154,145	104,389	56,838	125,209	4,000	444,581	403,189	847,770
KINGSBURG	115,856	78,460	43,912	94,108	3,000	335,336	303,040	638,376
MENDOTA	116,607	78,968	44,165	94,718	3,000	337,457	305,003	642,460
ORANGE COVE	89,102	60,341	34,880	72,376	2,000	258,698	233,059	491,758
PARLIER	134,968	91,402	50,364	109,633	4,000	390,367	353,030	743,396
REEDLEY	231,435	156,731	82,930	187,991	6,000	665,086	605,353	1,270,440
SANGER	246,211	166,738	87,918	199,993	6,000	706,860	644,003	1,350,862
SAN JOAQUIN	34,268	23,207	16,368	27,835	1,000	102,678	89,633	192,311
SELMA	228,980	155,068	82,101	185,997	5,000	657,146	598,932	1,256,078
GLENN COUNTY								
ORLAND	76,586	51,865	27,624	62,210	2,000	220,285	200,322	420,607
WILLOWS	59,540	40,321	22,544	48,364	2,000	172,769	155,736	328,506
HUMBOLDT COUNTY								
ARCATA	172,237	116,642	83,250	139,906	4,000	516,035	450,513	966,548
BLUE LAKE	11,154	7,554	9,880	9,060	1,000	38,648	29,175	67,823
EUREKA	249,917	169,247	118,631	203,003	6,000	746,798	653,695	1,400,493
FERNDALE	12,905	8,739	10,678	10,482	1,000	43,804	33,755	77,559
FORTUNA	115,995	78,554	57,633	94,221	3,000	349,403	303,404	652,807
RIO DELL	31,377	21,249	19,092	25,487	1,000	98,206	82,072	180,278
TRINIDAD	2,844	1,926	6,095	2,310	1,000	14,176	7,439	21,615
IMPERIAL COUNTY								
BRAWLEY	249,685	169,090	105,572	202,815	6,000	733,162	653,089	1,386,252
CALEXICO	358,741	242,945	149,587	291,400	6,000	1,048,673	938,343	1,987,017
CALIPATRIA	61,245	41,476	29,518	49,748	2,000	183,987	160,195	344,182
EL CENTRO	415,234	281,202	172,387	337,288	6,000	1,212,111	1,086,108	2,298,218
HOLTVILLE	51,554	34,913	25,607	41,877	2,000	155,952	134,849	290,801
IMPERIAL	199,298	134,967	85,236	161,886	4,000	585,387	521,294	1,106,681
WESTMORLAND	18,713	12,673	12,353	15,201	1,000	59,940	48,948	108,887
INYO COUNTY								
BISHOP	35,843	24,273	19,634	29,114	1,000	109,865	93,752	203,617

Local Streets and Roads - Projected FY2023-24 Revenues

Based on State Dept of Finance statewide revenue projections

Estimated May 2023

	Highway Users Tax Acct (HUTA) ⁽¹⁾ Streets & Highways Code					TOTAL HUTA	Road Mntnc Rehab Acct	TOTAL
	Sec2103 ⁽⁵⁾	Sec2105 ⁽³⁾	Sec2106 ⁽³⁾	Sec2107 ⁽³⁾	Sec2107.5 ⁽⁴⁾			
KERN COUNTY								
ARVIN	182,956	123,900	53,821	148,612	5,000	514,289	478,549	992,839
BAKERSFIELD	3,787,750	2,565,119	1,019,678	3,076,731	10,000	10,459,277	9,907,442	20,366,720
CALIFORNIA CITY	139,091	94,194	42,067	112,981	3,000	391,333	363,813	755,146
DELANO	477,812	323,581	132,824	388,120	7,500	1,329,837	1,249,792	2,579,629
MARICOPA	9,496	6,431	7,344	7,713	1,000	31,984	24,837	56,821
MCFARLAND	131,346	88,949	39,992	106,690	3,000	369,978	343,555	713,533
RIDGECREST	259,959	176,048	74,453	211,161	6,000	727,620	679,962	1,407,582
SHAFTER	189,784	128,524	55,650	154,158	5,000	533,116	496,408	1,029,524
TAFT	80,570	54,563	26,388	65,445	2,000	228,965	210,742	439,707
TEHACHAPI	121,007	81,948	37,222	98,292	3,000	341,469	316,513	657,982
WASCO	251,204	170,119	72,107	204,049	6,000	703,480	657,063	1,360,543
KINGS COUNTY								
AVENAL	126,908	85,944	41,139	103,086	4,000	361,077	331,948	693,026
CORCORAN	204,245	138,317	63,284	165,905	5,000	576,751	534,234	1,110,984
HANFORD	540,085	365,754	159,448	438,703	7,500	1,511,490	1,412,677	2,924,167
LEMOORE	250,667	169,755	76,576	203,613	6,000	706,611	655,658	1,362,269
LAKE COUNTY								
CLEARLAKE	156,331	105,870	59,613	126,985	4,000	452,799	408,908	861,707
LAKEPORT	46,311	31,362	21,038	37,618	1,000	137,329	121,134	258,463
LASSEN COUNTY								
SUSANVILLE	149,244	101,070	49,023	203,816	4,000	507,153	390,371	897,524
LOS ANGELES COUNTY								
AGOURA HILLS	187,486	126,968	76,391	152,292	5,000	548,137	490,399	1,038,535
ALHAMBRA	765,360	518,313	297,049	621,690	7,500	2,209,910	2,001,916	4,211,826
ARCADIA	527,069	356,939	206,059	428,130	7,500	1,525,698	1,378,631	2,904,329
ARTESIA	152,746	103,442	63,125	124,073	4,000	447,386	399,530	846,916
AVALON	31,905	21,607	16,983	25,916	1,000	97,411	83,454	180,865
AZUSA	467,474	316,580	183,302	379,722	6,000	1,353,078	1,222,749	2,575,827
BALDWIN PARK	667,540	452,068	259,697	542,233	7,500	1,929,038	1,746,054	3,675,092
BELL	316,312	214,211	125,582	256,935	6,000	919,041	827,363	1,746,404
BELLFLOWER	730,749	494,874	283,833	593,576	7,500	2,110,532	1,911,387	4,021,918
BELL GARDENS	365,152	247,286	144,231	296,608	6,000	1,059,277	955,112	2,014,389
BEVERLY HILLS	303,018	205,208	120,506	246,137	6,000	880,869	792,591	1,673,460
BRADBURY	8,523	5,772	8,054	6,923	1,000	30,272	22,293	52,565
BURBANK	993,126	672,559	384,020	806,701	10,000	2,866,405	2,597,673	5,464,079
CALABASAS	215,223	145,752	86,982	174,822	5,000	627,778	562,948	1,190,726
CARSON	869,506	588,842	336,816	706,286	7,500	2,508,951	2,274,327	4,783,278
CERRITOS	457,422	309,773	179,464	371,557	6,000	1,324,216	1,196,458	2,520,675

Local Streets and Roads - Projected FY2023-24 Revenues

Based on State Dept of Finance statewide revenue projections

Estimated May 2023

	Highway Users Tax Acct (HUTA) ⁽¹⁾ Streets & Highways Code					TOTAL HUTA	Road Mntnc Rehab Acct	TOTAL
	Sec2103 ⁽⁵⁾	Sec2105 ⁽³⁾	Sec2106 ⁽³⁾	Sec2107 ⁽³⁾	Sec2107.5 ⁽⁴⁾			
CLAREMONT	346,921	234,940	137,270	281,798	6,000	1,006,928	907,424	1,914,352
COMMERCE	114,671	77,657	48,586	93,145	3,000	337,059	299,938	636,997
COMPTON	890,461	603,033	344,818	723,308	7,500	2,569,121	2,329,139	4,898,260
COVINA	475,385	321,938	186,323	386,148	6,000	1,375,794	1,243,443	2,619,238
CUDAHY	211,026	142,910	85,379	171,413	5,000	615,728	551,971	1,167,699
CULVER CITY	374,740	253,780	147,893	304,396	6,000	1,086,809	980,191	2,067,000
DIAMOND BAR	509,255	344,875	199,256	413,660	7,500	1,474,545	1,332,034	2,806,579
DOWNEY	1,055,649	714,901	407,894	857,487	10,000	3,045,931	2,761,212	5,807,143
DUARTE	200,817	135,996	81,481	163,121	5,000	586,415	525,268	1,111,683
EL MONTE	1,011,015	684,674	390,851	821,232	10,000	2,917,771	2,644,464	5,562,235
EL SEGUNDO	160,250	108,523	65,991	130,168	4,000	468,932	419,158	888,090
GARDENA	564,394	382,216	220,311	458,449	7,500	1,632,870	1,476,260	3,109,130
GLENDALE	1,815,339	1,229,374	697,978	1,474,572	10,000	5,227,262	4,748,298	9,975,560
GLENORA	486,419	329,410	190,536	395,110	7,500	1,408,975	1,272,303	2,681,278
HAWAIIAN GARDENS	129,234	87,519	54,147	104,974	3,000	378,874	338,030	716,905
HAWTHORNE	815,395	552,197	316,154	662,333	7,500	2,353,579	2,132,790	4,486,369
HERMOSA BEACH	182,650	123,693	74,544	148,364	4,000	533,252	477,750	1,011,001
HIDDEN HILLS	16,101	10,904	10,948	13,079	1,000	52,031	42,114	94,146
HUNTINGTON PARK	506,929	343,300	198,368	411,771	7,500	1,467,868	1,325,952	2,793,820
INDUSTRY	4,058	2,748	6,349	3,296	1,000	17,451	10,613	28,064
INGLEWOOD	1,005,558	680,978	388,767	816,799	10,000	2,902,103	2,630,192	5,532,295
IRVINDALE	13,905	9,417	10,110	11,295	1,000	45,727	36,372	82,099
LA CANADA FLINTRIDGE	190,349	128,907	77,484	154,617	5,000	556,356	497,886	1,054,243
LA HABRA HEIGHTS	52,398	35,484	24,808	42,562	2,000	157,251	137,054	294,305
LAKEWOOD	762,590	516,437	295,991	619,440	7,500	2,201,957	1,994,670	4,196,627
LA MIRADA	456,227	308,964	179,008	370,586	6,000	1,320,785	1,193,332	2,514,117
LANCASTER	1,635,097	1,107,311	629,153	1,328,164	10,000	4,709,726	4,276,849	8,986,575
LA PUENTE	352,210	238,522	139,290	286,095	6,000	1,022,117	921,260	1,943,377
LA VERNE	304,713	206,356	121,153	247,514	6,000	885,737	797,025	1,682,762
LAWNDALE	294,486	199,430	117,248	239,206	6,000	856,370	770,273	1,626,644
LOMITA	193,962	131,354	78,863	157,552	5,000	566,730	507,336	1,074,067
LONG BEACH	4,300,154	2,912,126	1,646,791	3,492,949	10,000	12,362,021	11,247,715	23,609,736
LOS ANGELES	36,093,489	24,443,031	13,786,911	29,318,189	20,000	103,661,620	94,408,076	198,069,696
LYNWOOD	635,283	430,223	247,379	516,031	7,500	1,836,416	1,661,680	3,498,096
MALIBU	99,487	67,374	42,788	80,812	3,000	293,461	260,223	553,683
MANHATTAN BEACH	328,615	222,543	130,280	266,929	6,000	954,366	859,542	1,813,908
MAYWOOD	232,852	157,691	93,713	189,142	6,000	679,399	609,061	1,288,459
MONROVIA	350,747	237,531	138,731	284,906	6,000	1,017,914	917,432	1,935,346
MONTEBELLO	580,616	393,201	226,505	471,625	7,500	1,679,447	1,518,690	3,198,137

Local Streets and Roads - Projected FY2023-24 Revenues

Based on State Dept of Finance statewide revenue projections

Estimated May 2023

	Highway Users Tax Acct (HUTA) ⁽¹⁾ Streets & Highways Code					TOTAL HUTA	Road Mntnc Rehab Acct	TOTAL
	Sec2103 ⁽⁵⁾	Sec2105 ⁽³⁾	Sec2106 ⁽³⁾	Sec2107 ⁽³⁾	Sec2107.5 ⁽⁴⁾			
MONTEREY PARK	565,636	383,057	220,785	459,457	7,500	1,636,435	1,479,507	3,115,942
NORWALK	958,052	648,807	370,627	778,211	10,000	2,765,697	2,505,932	5,271,629
PALMDALE	1,568,683	1,062,335	603,794	1,274,217	10,000	4,519,029	4,103,132	8,622,161
PALOS VERDES ESTATES	123,722	83,786	52,042	100,497	3,000	363,047	323,613	686,660
PARAMOUNT	495,470	335,539	193,993	402,462	7,500	1,434,964	1,295,977	2,730,941
PASADENA	1,295,004	876,996	499,291	1,051,912	10,000	3,733,203	3,387,283	7,120,486
PICO RIVERA	575,761	389,914	224,651	467,682	7,500	1,665,509	1,505,992	3,171,501
POMONA	1,410,444	955,173	543,371	1,145,682	10,000	4,064,669	3,689,233	7,753,902
RANCHO PALOS VERDES	392,129	265,555	154,532	318,520	6,000	1,136,738	1,025,674	2,162,412
REDONDO BEACH	650,726	440,681	253,276	528,575	7,500	1,880,758	1,702,074	3,582,833
ROLLING HILLS ⁽²⁾								
ROLLING HILLS ESTATES	76,790	52,003	34,122	62,375	2,000	227,290	200,856	428,145
ROSEMEAD	473,588	320,721	185,637	384,688	7,500	1,372,134	1,238,742	2,610,876
SAN DIMAS	323,705	219,218	128,405	262,940	6,000	940,268	846,700	1,786,967
SAN FERNANDO	219,076	148,362	88,453	177,952	6,000	639,844	573,028	1,212,872
SAN GABRIEL	365,588	247,581	144,398	296,961	6,000	1,060,528	956,251	2,016,778
SAN MARINO	116,273	78,742	49,198	94,447	3,000	341,660	304,130	645,791
SANTA CLARITA	2,121,609	1,436,784	814,925	1,723,350	10,000	6,106,668	5,549,394	11,656,062
SANTA FE SPRINGS	173,822	117,714	71,173	141,193	4,000	507,901	454,657	962,558
SANTA MONICA	864,624	585,536	334,952	702,321	7,500	2,494,933	2,261,557	4,756,490
SIERRA MADRE	103,563	70,134	44,345	84,123	3,000	305,165	270,885	576,050
SIGNAL HILL	108,973	73,798	46,411	88,517	3,000	320,699	285,036	605,735
SOUTH EL MONTE	182,206	123,392	74,374	148,003	5,000	532,975	476,587	1,009,561
SOUTH GATE	863,957	585,084	334,697	701,779	7,500	2,493,017	2,259,812	4,752,830
SOUTH PASADENA	249,796	169,166	100,183	202,906	6,000	728,051	653,380	1,381,431
TEMPLE CITY	338,425	229,187	134,026	274,898	6,000	982,536	885,204	1,867,739
TORRANCE	1,360,548	921,382	524,318	1,105,152	10,000	3,921,400	3,558,722	7,480,122
VERNON	1,955	1,324	5,546	1,588	1,000	11,413	5,113	16,526
WALNUT	263,451	178,413	105,398	213,997	6,000	767,259	689,097	1,456,357
WEST COVINA	1,015,406	687,647	392,527	824,799	10,000	2,930,379	2,655,950	5,586,329
WEST HOLLYWOOD	330,699	223,954	131,076	268,622	6,000	960,351	864,994	1,825,345
WESTLAKE VILLAGE	75,474	51,112	33,619	61,307	2,000	223,513	197,415	420,927
WHITTIER	814,598	551,658	315,850	661,685	7,500	2,351,291	2,130,706	4,481,998

Local Streets and Roads - Projected FY2023-24 Revenues

Based on State Dept of Finance statewide revenue projections

Estimated May 2023

	Highway Users Tax Acct (HUTA) ⁽¹⁾ Streets & Highways Code					TOTAL HUTA	Road Mntnc Rehab Acct	TOTAL
	Sec2103 ⁽⁵⁾	Sec2105 ⁽³⁾	Sec2106 ⁽³⁾	Sec2107 ⁽³⁾	Sec2107.5 ⁽⁴⁾			
MADERA COUNTY								
CHOWCHILLA	178,741	121,046	47,661	145,188	4,000	496,636	467,524	964,160
MADERA	609,973	413,083	151,067	495,472	7,500	1,677,095	1,595,479	3,272,575
MARIN COUNTY								
BELVEDERE	19,668	13,319	13,107	15,976	1,000	63,069	51,444	114,513
CORTE MADERA	94,447	63,961	44,690	76,718	3,000	282,816	247,041	529,857
FAIRFAX	70,314	47,618	34,497	57,115	2,000	211,544	183,918	395,462
LARKSPUR	121,100	82,011	55,947	98,368	3,000	360,424	316,755	677,180
MILL VALLEY	130,818	88,592	60,051	106,261	3,000	388,722	342,174	730,896
NOVATO	492,292	333,387	212,720	399,881	7,500	1,445,781	1,287,666	2,733,447
ROSS	21,632	14,649	13,936	17,571	1,000	68,788	56,581	125,369
SAN ANSELMO	118,358	80,153	54,788	96,140	3,000	352,440	309,583	662,022
SAN RAFAEL	569,758	385,848	245,438	462,806	7,500	1,671,350	1,490,290	3,161,641
SAUSALITO	65,905	44,631	32,635	53,533	2,000	198,704	172,383	371,087
TIBURON	84,553	57,261	40,511	68,681	2,000	253,006	221,162	474,167
MARIPOSA COUNTY								
MENDOCINO COUNTY								
FORT BRAGG	66,266	44,876	32,933	53,827	2,000	199,902	173,328	373,230
POINT ARENA	4,261	2,886	6,609	3,462	1,000	18,218	11,147	29,365
UKIAH	153,820	104,169	70,104	124,946	4,000	457,040	402,341	859,381
WILLITS	45,829	31,036	24,257	37,226	2,000	140,349	119,874	260,222
MERCED COUNTY								
ATWATER	294,143	199,198	93,354	238,928	6,000	831,623	769,377	1,601,000
DOS PALOS	53,676	36,350	20,960	43,600	2,000	156,586	140,398	296,984
GUSTINE	56,307	38,132	21,752	45,737	2,000	163,928	147,280	311,207
LIVINGSTON	133,495	90,405	44,990	108,436	4,000	381,326	349,177	730,503
LOS BANOS	432,066	292,602	134,877	350,961	6,000	1,216,506	1,130,136	2,346,642
MERCED	825,039	558,728	253,184	670,166	7,500	2,314,617	2,158,015	4,472,633
MODOC COUNTY								
ALTURAS	25,254	17,102	15,564	21,994	1,000	80,915	66,055	146,970
MONO COUNTY								
MAMMOTH LAKES	68,230	46,206	62,896	1,907,440	2,000	2,086,772	178,466	2,265,237

Local Streets and Roads - Projected FY2023-24 Revenues

Based on State Dept of Finance statewide revenue projections

Estimated May 2023

	Highway Users Tax Acct (HUTA) ⁽¹⁾ Streets & Highways Code					TOTAL HUTA	Road Mntnc Rehab Acct	TOTAL
	Sec2103 ⁽⁵⁾	Sec2105 ⁽³⁾	Sec2106 ⁽³⁾	Sec2107 ⁽³⁾	Sec2107.5 ⁽⁴⁾			
MONTEREY COUNTY								
CARMEL-BY-THE-SEA	29,302	19,844	13,225	23,802	1,000	87,173	76,644	163,817
DEL REY OAKS	14,609	9,894	9,000	11,867	1,000	46,371	38,213	84,584
GONZALES	79,078	53,553	27,536	64,234	2,000	226,400	206,841	433,241
GREENFIELD	181,891	123,179	57,096	147,747	4,000	513,912	475,763	989,675
KING CITY	123,935	83,930	40,433	100,670	3,000	351,968	324,170	676,138
MARINA	201,790	136,655	62,817	163,911	6,000	571,172	527,812	1,098,984
MONTEREY	263,655	178,551	80,604	214,163	6,000	742,973	689,631	1,432,604
PACIFIC GROVE	138,600	93,862	44,649	112,582	4,000	393,693	362,529	756,221
SALINAS	1,496,859	1,013,694	435,164	1,215,876	10,000	4,171,593	3,915,265	8,086,858
SAND CITY	3,446	2,334	5,791	2,799	1,000	15,370	9,014	24,384
SEASIDE	303,009	205,202	91,919	246,129	6,000	852,259	792,566	1,644,825
SOLEDAD	255,707	173,168	78,319	207,707	6,000	720,900	668,840	1,389,740
NAPA COUNTY								
AMERICAN CANYON	200,641	135,877	67,963	162,978	5,000	572,459	524,807	1,097,266
CALISTOGA	48,340	32,736	20,018	39,266	2,000	142,360	126,440	268,800
NAPA	719,076	486,969	231,171	584,095	7,500	2,028,811	1,880,855	3,909,666
SAINT HELENA	50,526	34,217	20,706	41,042	2,000	148,491	132,159	280,650
YOUNTVILLE	27,690	18,752	13,517	22,492	1,000	83,452	72,428	155,880
NEVADA COUNTY								
GRASS VALLEY	126,149	85,430	110,604	102,469	3,000	427,651	329,961	757,612
NEVADA CITY	31,025	21,011	30,822	25,201	1,000	109,059	81,152	190,211
TRUCKEE	158,415	107,281	137,667	1,738,601	4,000	2,145,965	414,360	2,560,325

Local Streets and Roads - Projected FY2023-24 Revenues

Based on State Dept of Finance statewide revenue projections

Estimated May 2023

	Highway Users Tax Acct (HUTA) ⁽¹⁾ Streets & Highways Code					TOTAL HUTA	Road Mntnc Rehab Acct	TOTAL
	Sec2103 ⁽⁵⁾	Sec2105 ⁽³⁾	Sec2106 ⁽³⁾	Sec2107 ⁽³⁾	Sec2107.5 ⁽⁴⁾			
ORANGE COUNTY								
ALISO VIEJO	480,323	325,282	207,517	390,159	7,500	1,410,781	1,256,359	2,667,139
ANAHEIM	3,204,123	2,169,878	1,357,080	2,602,660	10,000	9,343,742	8,380,877	17,724,619
BREA	437,458	296,253	189,426	355,341	6,000	1,284,478	1,144,239	2,428,717
BUENA PARK	780,636	528,658	334,263	634,099	7,500	2,285,155	2,041,874	4,327,029
COSTA MESA	1,042,133	705,747	444,626	846,508	10,000	3,049,014	2,725,858	5,774,872
CYPRESS	466,816	316,134	201,817	379,187	6,000	1,369,955	1,221,029	2,590,984
DANA POINT	307,215	208,050	134,458	249,546	6,000	905,269	803,567	1,708,836
FOUNTAIN VALLEY	529,589	358,645	228,310	430,177	7,500	1,554,222	1,385,222	2,939,444
FULLERTON	1,337,573	905,823	569,314	1,086,490	10,000	3,909,200	3,498,627	7,407,828
GARDEN GROVE	1,593,844	1,079,374	677,472	1,294,655	10,000	4,655,346	4,168,945	8,824,292
HUNTINGTON BEACH	1,838,592	1,245,121	780,766	1,493,460	10,000	5,367,938	4,809,119	10,177,057
IRVINE	2,874,174	1,946,432	1,217,827	2,334,648	10,000	8,383,082	7,517,846	15,900,928
LAGUNA BEACH	213,110	144,321	94,742	173,106	5,000	630,280	557,423	1,187,703
LAGUNA HILLS	290,808	196,939	127,534	236,219	6,000	857,500	760,653	1,618,154
LAGUNA NIGUEL	597,884	404,896	257,133	485,652	7,500	1,753,065	1,563,857	3,316,922
LAGUNA WOODS	164,502	111,403	74,227	133,622	4,000	487,754	430,280	918,034
LA HABRA	581,607	393,873	250,264	472,430	7,500	1,705,673	1,521,282	3,226,956
LAKE FOREST	803,889	544,405	344,076	652,987	7,500	2,352,857	2,102,695	4,455,551
LA PALMA	144,371	97,770	65,731	117,270	4,000	429,143	377,625	806,767
LOS ALAMITOS	110,205	74,633	51,311	89,518	3,000	328,667	288,259	616,926
MISSION VIEJO	867,718	587,631	371,015	704,834	7,500	2,538,699	2,269,650	4,808,349
NEWPORT BEACH	788,890	534,248	337,746	640,803	7,500	2,309,188	2,063,464	4,372,652
ORANGE	1,293,216	875,785	550,594	1,050,460	10,000	3,780,055	3,382,607	7,162,661
PLACENTIA	479,989	325,056	207,377	389,888	7,500	1,409,810	1,255,486	2,665,296
RANCHO SANTA MARGARITA	444,202	300,820	192,273	360,819	6,000	1,304,114	1,161,880	2,465,994
SAN CLEMENTE	594,271	402,449	255,608	482,717	7,500	1,742,545	1,554,407	3,296,952
SAN JUAN CAPISTRANO	324,131	219,506	141,597	263,287	6,000	954,521	847,814	1,802,335
SANTA ANA	2,875,657	1,947,436	1,218,453	2,335,852	10,000	8,387,398	7,521,723	15,909,120
SEAL BEACH	233,843	158,362	103,492	189,947	5,000	690,645	611,653	1,302,298
STANTON	363,846	246,402	158,359	295,546	6,000	1,070,153	951,695	2,021,848
TUSTIN	744,821	504,404	319,147	605,007	7,500	2,180,879	1,948,194	4,129,073
VILLA PARK	54,315	36,783	27,723	44,119	2,000	164,941	142,070	307,011
WESTMINSTER	843,011	570,899	360,587	684,765	7,500	2,466,762	2,205,025	4,671,787
YORBA LINDA	630,836	427,211	271,040	512,419	7,500	1,849,006	1,650,049	3,499,055

Local Streets and Roads - Projected FY2023-24 Revenues

Based on State Dept of Finance statewide revenue projections

Estimated May 2023

	Highway Users Tax Acct (HUTA) ⁽¹⁾ Streets & Highways Code					TOTAL HUTA	Road Mntnc Rehab Acct	TOTAL
	Sec2103 ⁽⁵⁾	Sec2105 ⁽³⁾	Sec2106 ⁽³⁾	Sec2107 ⁽³⁾	Sec2107.5 ⁽⁴⁾			
PLACER COUNTY								
AUBURN	127,668	86,459	59,305	103,703	3,000	380,135	333,935	714,070
COLFAX	18,917	12,811	12,876	15,366	1,000	60,971	49,481	110,452
LINCOLN	474,802	321,542	207,507	385,674	6,000	1,395,525	1,241,917	2,637,441
LOOMIS	63,125	42,749	31,750	51,276	2,000	190,900	165,114	356,014
ROCKLIN	663,890	449,596	288,234	539,268	7,500	1,948,489	1,736,507	3,684,996
ROSEVILLE	1,399,188	947,550	602,155	1,136,539	10,000	4,095,432	3,659,791	7,755,223
PLUMAS COUNTY								
PORTOLA	19,455	13,175	8,916	129,353	1,000	171,898	50,886	222,784
RIVERSIDE COUNTY								
BANNING	286,046	193,715	124,663	232,351	6,000	842,775	748,198	1,590,974
BEAUMONT	506,651	343,112	217,104	411,545	7,500	1,485,912	1,325,225	2,811,137
BLYTHE	172,182	116,604	76,950	139,861	5,000	510,596	450,368	960,964
CALIMESA	100,969	68,378	47,109	82,016	2,000	300,472	264,100	564,572
CANYON LAKE	102,544	69,444	47,769	83,295	3,000	306,052	268,219	574,272
CATHEDRAL CITY	480,249	325,231	206,040	390,099	7,500	1,409,120	1,256,165	2,665,284
COACHELLA	390,554	264,489	168,455	317,241	6,000	1,146,740	1,021,555	2,168,294
CORONA	1,452,401	983,587	613,405	1,179,763	10,000	4,239,155	3,798,978	8,038,133
DESERT HOT SPRINGS	301,721	204,330	131,231	245,083	6,000	888,366	789,198	1,677,564
EASTVALE	647,826	438,717	276,261	526,219	7,500	1,896,524	1,694,490	3,591,014
HEMET	830,486	562,417	352,802	674,591	7,500	2,427,795	2,172,264	4,600,059
INDIAN WELLS	44,115	29,876	23,286	35,834	2,000	135,111	115,391	250,502
INDIO	825,770	559,224	350,826	670,761	7,500	2,414,081	2,159,930	4,574,010
JURUPA VALLEY	976,284	661,153	413,896	793,020	10,000	2,854,353	2,553,620	5,407,973
LAKE ELSINORE	663,446	449,295	282,806	538,907	7,500	1,941,953	1,735,344	3,677,297
LA QUINTA	350,737	237,524	151,771	284,899	6,000	1,030,931	917,407	1,948,338
MENIFEE	987,799	668,952	418,721	802,374	7,500	2,885,345	2,583,740	5,469,085
MORENO VALLEY	1,939,959	1,313,768	817,708	1,575,799	10,000	5,657,234	5,074,261	10,731,495
MURRIETA	1,030,006	697,535	436,407	836,658	10,000	3,010,606	2,694,139	5,704,745
NORCO	246,971	167,252	108,289	200,610	6,000	729,122	645,990	1,375,112
PALM DESERT	471,439	319,265	202,349	382,942	7,500	1,383,495	1,233,121	2,616,616
PALM SPRINGS	411,296	278,536	177,147	334,090	6,000	1,207,069	1,075,809	2,282,878
PERRIS	730,842	494,936	311,047	593,651	7,500	2,137,977	1,911,629	4,049,606
RANCHO MIRAGE	155,673	105,424	70,032	126,451	4,000	461,581	407,187	868,768
RIVERSIDE	2,944,554	1,994,094	1,238,667	2,391,816	10,000	8,579,130	7,701,933	16,281,063
SAN JACINTO	505,753	342,503	216,727	410,815	7,500	1,483,299	1,322,874	2,806,173
TEMECULA	1,018,352	689,642	431,524	827,192	10,000	2,976,709	2,663,656	5,640,365
WILDOMAR	340,176	230,372	147,345	276,320	6,000	1,000,214	889,783	1,889,997

Local Streets and Roads - Projected FY2023-24 Revenues

Based on State Dept of Finance statewide revenue projections

Estimated May 2023

	Highway Users Tax Acct (HUTA) ⁽¹⁾ Streets & Highways Code					TOTAL HUTA	Road Mntnc Rehab Acct	TOTAL
	Sec2103 ⁽⁵⁾	Sec2105 ⁽³⁾	Sec2106 ⁽³⁾	Sec2107 ⁽³⁾	Sec2107.5 ⁽⁴⁾			
SACRAMENTO COUNTY								
CITRUS HEIGHTS	812,597	550,302	360,865	660,060	7,500	2,391,324	2,125,472	4,516,797
ELK GROVE	1,639,479	1,110,279	723,189	1,331,724	10,000	4,814,671	4,288,310	9,102,981
FOLSOM	783,665	530,709	348,187	636,559	7,500	2,306,621	2,049,797	4,356,419
GALT	235,928	159,774	108,179	191,641	6,000	701,521	617,105	1,318,627
ISLETON	7,365	4,988	8,027	5,982	1,000	27,362	19,264	46,626
RANCHO CORDOVA	744,451	504,153	331,004	604,706	7,500	2,191,813	1,947,225	4,139,038
SACRAMENTO	4,819,757	3,264,009	2,116,726	3,915,015	20,000	14,135,506	12,606,815	26,742,322
SAN BENITO COUNTY								
HOLLISTER	394,223	266,973	160,659	320,221	6,000	1,148,076	1,031,150	2,179,227
SAN JUAN BAUTISTA	19,390	13,131	12,466	15,750	1,000	61,736	50,717	112,453
SAN BERNARDINO COUNTY								
ADELANTO	339,639	230,008	143,607	275,884	6,000	995,138	888,378	1,883,516
APPLE VALLEY	704,143	476,856	292,576	571,964	7,500	2,053,038	1,841,793	3,894,832
BARSTOW	236,539	160,188	101,471	192,137	5,000	695,335	618,705	1,314,040
BIG BEAR LAKE	46,756	31,664	23,909	413,505	2,000	517,833	122,297	640,130
CHINO	852,275	577,173	353,116	692,290	7,500	2,482,354	2,229,256	4,711,610
CHINO HILLS	726,969	492,314	301,905	590,506	7,500	2,119,194	1,901,500	4,020,694
COLTON	498,610	337,666	208,577	405,013	7,500	1,457,367	1,304,192	2,761,558
FONTANA	1,971,475	1,335,111	810,522	1,601,399	10,000	5,728,508	5,156,697	10,885,205
GRAND TERRACE	121,748	82,450	54,557	98,894	3,000	360,649	318,451	679,101
HESPERIA	929,408	629,408	384,639	754,943	7,500	2,705,899	2,431,008	5,136,907
HIGHLAND	527,440	357,190	220,359	428,431	7,500	1,540,921	1,379,600	2,920,521
LOMA LINDA	234,835	159,033	100,775	190,753	5,000	690,395	614,246	1,304,641
MONTCLAIR	352,618	238,798	148,911	286,426	6,000	1,032,753	922,326	1,955,080
NEEDLES	45,672	30,930	23,466	37,099	2,000	139,166	119,462	258,627
ONTARIO	1,663,047	1,126,239	684,470	1,350,868	10,000	4,834,624	4,349,955	9,184,579
RANCHO CUCAMONGA	1,616,356	1,094,620	665,388	1,312,941	10,000	4,699,305	4,227,828	8,927,133
REDLANDS	675,007	457,125	280,669	548,298	7,500	1,968,598	1,765,585	3,734,183
RIALTO	964,750	653,343	399,083	783,652	10,000	2,810,827	2,523,452	5,334,279
SAN BERNARDINO	2,070,008	1,401,839	850,791	1,681,436	10,000	6,014,074	5,414,424	11,428,498
TWENTYNINE PALMS	256,475	173,689	109,619	208,331	6,000	754,114	670,851	1,424,966
UPLAND	733,148	496,499	304,430	595,525	7,500	2,137,103	1,917,663	4,054,765
VICTORVILLE	1,265,109	856,750	521,837	1,027,629	10,000	3,681,326	3,309,088	6,990,414
YUCAIPA	507,393	343,614	212,166	412,147	7,500	1,482,819	1,327,163	2,809,983
YUCCA VALLEY	202,077	136,849	87,387	164,144	5,000	595,457	528,563	1,124,020

Local Streets and Roads - Projected FY2023-24 Revenues

Based on State Dept of Finance statewide revenue projections

Estimated May 2023

	Highway Users Tax Acct (HUTA) ⁽¹⁾ Streets & Highways Code					TOTAL HUTA	Road Mntnc Rehab Acct	TOTAL
	Sec2103 ⁽⁵⁾	Sec2105 ⁽³⁾	Sec2106 ⁽³⁾	Sec2107 ⁽³⁾	Sec2107.5 ⁽⁴⁾			
SAN DIEGO COUNTY								
CARLSBAD	1,070,786	725,152	478,310	869,783	10,000	3,154,032	2,800,806	5,954,838
CHULA VISTA	2,564,153	1,736,481	1,138,689	2,082,822	10,000	7,532,144	6,706,936	14,239,081
CORONADO	218,428	147,923	101,391	177,426	5,000	650,167	571,332	1,221,499
DEL MAR	36,510	24,725	20,945	29,656	1,000	112,836	95,497	208,332
EL CAJON	983,574	666,091	439,744	798,942	10,000	2,898,352	2,572,690	5,471,043
ENCINITAS	569,879	385,930	256,805	462,904	7,500	1,683,017	1,490,605	3,173,622
ESCONDIDO	1,397,585	946,465	622,823	1,135,237	10,000	4,112,111	3,655,599	7,767,710
IMPERIAL BEACH	245,572	166,305	113,394	199,474	6,000	730,744	642,331	1,373,075
LA MESA	560,300	379,443	252,569	455,123	7,500	1,654,934	1,465,550	3,120,484
LEMON GROVE	253,048	171,368	116,700	205,547	6,000	752,662	661,885	1,414,547
NATIONAL CITY	569,471	385,654	256,625	462,573	7,500	1,681,822	1,489,539	3,171,361
OCEANSIDE	1,603,127	1,085,661	713,715	1,302,195	10,000	4,714,699	4,193,225	8,907,924
POWAY	451,706	305,902	204,548	366,914	6,000	1,335,070	1,181,507	2,516,578
SAN DIEGO	12,788,553	8,660,592	5,659,999	10,387,945	20,000	37,517,089	33,450,427	70,967,516
SAN MARCOS	871,915	590,473	390,368	708,243	7,500	2,568,499	2,280,627	4,849,126
SANTEE	549,729	372,285	247,895	446,537	7,500	1,623,945	1,437,902	3,061,847
SOLANA BEACH	119,479	80,913	57,634	97,051	3,000	358,076	312,515	670,591
VISTA	929,102	629,201	415,656	754,695	10,000	2,738,654	2,430,209	5,168,863
SAN FRANCISCO COUNTY								
SAN FRANCISCO	8,096,464	5,483,042	2,066,706	6,576,634	20,000	22,242,845	21,177,547	43,420,393
SAN JOAQUIN COUNTY								
ESCALON	68,915	46,670	32,071	55,979	2,000	205,635	180,259	385,894
LATHROP	290,252	196,563	119,656	235,767	6,000	848,239	759,199	1,607,438
LODI	616,708	417,644	248,839	500,943	7,500	1,791,634	1,613,096	3,404,730
MANTECA	804,667	544,932	323,216	653,619	7,500	2,333,934	2,104,730	4,438,664
RIPON	148,030	100,248	63,377	120,243	4,000	435,899	387,196	823,095
STOCKTON	2,996,516	2,029,284	1,190,556	2,434,024	10,000	8,660,379	7,837,848	16,498,227
TRACY	875,806	593,108	351,367	711,404	7,500	2,539,184	2,290,805	4,829,988
SAN LUIS OBISPO COUNTY								
ARROYO GRANDE	169,857	115,029	86,962	137,972	4,000	513,820	444,286	958,106
ATASCADERO	285,157	193,112	142,734	231,629	6,000	858,633	745,872	1,604,505
EL PASO DE ROBLES	290,539	196,757	145,338	236,001	6,000	874,636	759,951	1,634,586
GROVER BEACH	118,163	80,022	61,957	95,982	3,000	359,124	309,074	668,198
MORRO BAY	97,736	66,188	52,076	79,389	3,000	298,389	255,643	554,033
PISMO BEACH	74,557	50,491	40,864	60,562	2,000	228,474	195,016	423,490
SAN LUIS OBISPO	441,460	298,963	218,340	358,591	6,000	1,323,355	1,154,707	2,478,062

Local Streets and Roads - Projected FY2023-24 Revenues

Based on State Dept of Finance statewide revenue projections

Estimated May 2023

	Highway Users Tax Acct (HUTA) ⁽¹⁾ Streets & Highways Code					TOTAL HUTA	Road Mntnc Rehab Acct	TOTAL
	Sec2103 ⁽⁵⁾	Sec2105 ⁽³⁾	Sec2106 ⁽³⁾	Sec2107 ⁽³⁾	Sec2107.5 ⁽⁴⁾			
SAN MATEO COUNTY								
ATHERTON	64,672	43,797	31,882	52,532	2,000	194,884	169,161	364,044
BELMONT	260,552	176,449	113,907	211,642	6,000	768,550	681,513	1,450,063
BRISBANE	44,958	30,447	23,626	36,519	1,000	136,551	117,596	254,146
BURLINGAME	289,530	196,074	126,041	235,181	6,000	852,825	757,309	1,610,134
COLMA	13,498	9,141	10,452	10,964	1,000	45,055	35,305	80,360
DALY CITY	971,494	657,910	411,615	789,130	10,000	2,840,149	2,541,092	5,381,242
EAST PALO ALTO	278,320	188,482	121,347	226,075	6,000	820,225	727,989	1,548,214
FOSTER CITY	312,171	211,407	135,522	253,572	6,000	918,672	816,531	1,735,203
HALF MOON BAY	108,899	73,748	50,402	88,457	3,000	324,506	284,842	609,348
HILLSBOROUGH	105,397	71,377	48,935	85,613	3,000	314,322	275,683	590,004
MENLO PARK	316,432	214,293	137,307	257,033	6,000	931,065	827,678	1,758,743
MILLBRAE	216,112	146,354	95,297	175,544	5,000	638,308	565,274	1,203,582
PACIFICA	358,352	242,681	154,861	291,084	6,000	1,052,979	937,326	1,990,304
PORTOLA VALLEY	41,123	27,849	22,020	33,404	1,000	125,396	107,564	232,960
REDWOOD CITY	773,373	523,739	328,652	628,199	7,500	2,261,463	2,022,876	4,284,339
SAN BRUNO	407,758	276,139	175,549	331,215	6,000	1,196,662	1,066,553	2,263,214
SAN CARLOS	284,851	192,905	124,082	231,380	6,000	839,219	745,072	1,584,292
SAN MATEO	979,684	663,456	415,045	795,782	10,000	2,863,966	2,562,513	5,426,479
SOUTH SAN FRANCISCO	614,013	415,818	261,919	498,753	7,500	1,798,003	1,606,044	3,404,048
WOODSIDE	49,183	33,307	25,395	39,951	2,000	149,836	128,645	278,482
SANTA BARBARA COUNTY								
BUELLTON	47,710	32,310	21,092	38,754	2,000	141,865	124,793	266,658
CARPINTERIA	121,869	82,531	46,415	98,992	3,000	352,807	318,766	671,573
GOLETA	302,888	205,120	108,228	246,032	6,000	868,268	792,251	1,660,519
GUADALUPE	79,152	53,603	31,828	64,294	2,000	230,877	207,035	437,912
LOMPOC	411,269	278,517	145,236	334,067	6,000	1,175,089	1,075,736	2,250,826
SANTA BARBARA	810,383	548,803	281,522	658,262	7,500	2,306,469	2,119,681	4,426,151
SANTA MARIA	1,018,213	689,548	352,490	827,079	10,000	2,897,330	2,663,292	5,560,622
SOLVANG	53,917	36,513	23,211	43,796	2,000	159,437	141,028	300,465

Local Streets and Roads - Projected FY2023-24 Revenues

Based on State Dept of Finance statewide revenue projections

Estimated May 2023

	Highway Users Tax Acct (HUTA) ⁽¹⁾ Streets & Highways Code					TOTAL HUTA	Road Mntnc Rehab Acct	TOTAL
	Sec2103 ⁽⁵⁾	Sec2105 ⁽³⁾	Sec2106 ⁽³⁾	Sec2107 ⁽³⁾	Sec2107.5 ⁽⁴⁾			
SANTA CLARA COUNTY								
CAMPBELL	406,563	275,330	165,124	330,245	6,000	1,183,261	1,063,427	2,246,688
CUPERTINO	561,004	379,920	226,027	455,695	7,500	1,630,145	1,467,391	3,097,536
GILROY	555,612	376,268	223,900	451,315	7,500	1,614,596	1,453,289	3,067,885
LOS ALTOS	293,365	198,671	120,486	238,296	6,000	856,818	767,341	1,624,159
LOS ALTOS HILLS	78,772	53,346	35,863	63,986	2,000	233,967	206,041	440,008
LOS GATOS	310,957	210,585	127,423	252,586	6,000	907,551	813,357	1,720,908
MILPITAS	759,783	514,536	304,413	617,160	7,500	2,203,391	1,987,328	4,190,720
MONTE SERENO	32,322	21,889	17,546	26,255	1,000	99,012	84,544	183,556
MORGAN HILL	430,325	291,422	174,495	349,546	6,000	1,251,788	1,125,581	2,377,369
MOUNTAIN VIEW	776,921	526,142	311,172	631,081	7,500	2,252,816	2,032,157	4,284,973
PALO ALTO	634,588	429,752	255,044	515,466	7,500	1,842,350	1,659,863	3,502,213
SAN JOSE	9,410,673	6,373,043	3,715,812	7,644,145	20,000	27,163,672	24,615,062	51,778,735
SANTA CLARA	1,205,504	816,385	480,179	979,213	10,000	3,491,281	3,153,182	6,644,463
SARATOGA	289,076	195,766	118,794	234,812	6,000	844,448	756,122	1,600,570
SUNNYVALE	1,447,361	980,174	575,553	1,175,669	10,000	4,188,758	3,785,796	7,974,553
SANTA CRUZ COUNTY								
CAPITOLA	91,279	61,815	38,617	74,144	3,000	268,856	238,754	507,609
SANTA CRUZ	599,672	406,106	226,969	487,104	7,500	1,727,352	1,568,534	3,295,886
SCOTTS VALLEY	113,837	77,092	46,975	92,468	3,000	333,371	297,758	631,129
WATSONVILLE	479,656	324,830	182,505	389,617	7,500	1,384,108	1,254,614	2,638,722
SHASTA COUNTY								
ANDERSON	103,424	70,040	57,550	84,010	3,000	318,024	270,521	588,545
REDDING	869,302	588,704	448,176	706,121	7,500	2,619,803	2,273,794	4,893,597
SHASTA LAKE	95,753	64,846	53,638	77,779	3,000	295,015	250,458	545,473
SIERRA COUNTY								
LOYALTON	6,837	4,630	6,416	21,808	1,000	40,691	17,883	58,574
SISKIYOU COUNTY								
DORRIS	7,958	5,389	8,747	6,464	1,000	29,558	20,815	50,373
DUNSMUIR	15,795	10,697	12,634	38,688	1,000	78,815	41,315	120,130
ETNA	6,337	4,291	7,943	5,147	1,000	24,718	16,574	41,292
FORT JONES	6,429	4,354	7,989	5,222	1,000	24,995	16,817	41,811
MONTAGUE	11,395	7,717	10,452	9,256	1,000	39,819	29,805	69,624
MOUNT SHASTA	30,053	20,352	19,706	92,847	1,000	163,958	78,607	242,565
TULELAKE	8,347	5,653	8,940	6,780	1,000	30,720	21,833	52,552
WEED	26,884	18,206	18,135	21,838	1,000	86,063	70,320	156,383
YREKA	72,084	48,816	40,554	59,218	2,000	222,672	188,546	411,218

Local Streets and Roads - Projected FY2023-24 Revenues

Based on State Dept of Finance statewide revenue projections

Estimated May 2023

	Highway Users Tax Acct (HUTA) ⁽¹⁾ Streets & Highways Code					TOTAL HUTA	Road Mntnc Rehab Acct	TOTAL
	Sec2103 ⁽⁵⁾	Sec2105 ⁽³⁾	Sec2106 ⁽³⁾	Sec2107 ⁽³⁾	Sec2107.5 ⁽⁴⁾			
SOLANO COUNTY								
BENICIA	250,936	169,937	110,741	203,831	6,000	741,445	656,361	1,397,806
DIXON	176,786	119,722	79,437	143,601	4,000	523,545	462,411	985,956
FAIRFIELD	1,116,375	756,025	476,117	906,814	10,000	3,265,331	2,920,050	6,185,381
RIO VISTA	92,548	62,675	43,872	75,175	2,000	276,270	242,073	518,344
SUISUN CITY	272,919	184,825	120,023	221,688	6,000	805,455	713,862	1,519,317
VACAVILLE	947,658	641,767	404,887	769,768	7,500	2,771,580	2,478,745	5,250,325
VALLEJO	1,165,335	789,182	496,788	946,584	10,000	3,407,889	3,048,114	6,456,003
SONOMA COUNTY								
CLOVERDALE	83,441	56,508	39,936	67,778	2,000	249,664	218,254	467,917
COTATI	70,222	47,555	34,370	57,040	2,000	211,186	183,675	394,861
HEALDSBURG	104,739	70,931	48,905	85,078	3,000	312,653	273,962	586,616
PETALUMA	554,139	375,271	238,142	450,119	7,500	1,625,170	1,449,436	3,074,606
ROHNERT PARK	408,202	276,440	176,690	331,576	6,000	1,198,909	1,067,716	2,266,625
SANTA ROSA	1,649,188	1,116,854	699,255	1,339,610	10,000	4,814,907	4,313,705	9,128,612
SEBASTOPOL	69,684	47,191	34,143	56,603	2,000	209,622	182,270	391,892
SONOMA	99,857	67,625	46,849	81,113	3,000	298,443	261,192	559,636
WINDSOR	242,820	164,441	107,049	197,239	6,000	717,550	635,134	1,352,684
STANISLAUS COUNTY								
CERES	453,920	307,401	182,181	368,713	6,000	1,318,216	1,187,299	2,505,514
HUGHSON	69,434	47,022	31,933	56,400	2,000	206,789	181,616	388,405
MODESTO	2,029,061	1,374,109	797,708	1,648,175	10,000	5,859,053	5,307,320	11,166,373
NEWMAN	114,467	77,519	49,531	92,980	3,000	337,496	299,405	636,901
OAKDALE	214,713	145,407	88,705	174,408	5,000	628,233	561,615	1,189,848
PATTERSON	225,765	152,891	93,024	183,386	5,000	660,066	590,523	1,250,589
RIVERBANK	229,832	155,646	94,613	186,689	6,000	672,780	601,161	1,273,941
TURLOCK	667,800	452,244	265,760	542,443	7,500	1,935,747	1,746,733	3,682,480
WATERFORD	84,294	57,085	37,740	68,470	2,000	249,589	220,483	470,072
SUTTER COUNTY								
LIVE OAK	87,027	58,936	37,532	70,690	2,000	256,185	227,631	483,816
YUBA CITY	650,161	440,298	249,337	528,116	7,500	1,875,412	1,700,596	3,576,008
TEHAMA COUNTY								
CORNING	76,252	51,639	33,051	61,939	2,000	224,882	199,450	424,332
RED BLUFF	137,321	92,996	55,677	111,544	3,000	400,538	359,185	759,723
TEHAMA	4,030	2,729	6,293	3,273	1,000	17,325	10,541	27,866
TRINITY COUNTY								

Local Streets and Roads - Projected FY2023-24 Revenues

Based on State Dept of Finance statewide revenue projections

Estimated May 2023

	Highway Users Tax Acct (HUTA) ⁽¹⁾ Streets & Highways Code					TOTAL HUTA	Road Mntnc Rehab Acct	TOTAL
	Sec2103 ⁽⁵⁾	Sec2105 ⁽³⁾	Sec2106 ⁽³⁾	Sec2107 ⁽³⁾	Sec2107.5 ⁽⁴⁾			
TULARE COUNTY								
DINUBA	232,778	157,641	89,711	189,082	6,000	675,211	608,867	1,284,078
EXETER	95,920	64,958	39,789	77,914	3,000	281,582	250,894	532,476
FARMERSVILLE	96,198	65,147	39,890	78,140	3,000	282,375	251,621	533,996
LINDSAY	117,626	79,658	47,707	95,546	3,000	343,536	307,668	651,204
PORTERVILLE	580,403	393,057	216,514	471,452	7,500	1,668,926	1,518,132	3,187,058
TULARE	643,500	435,788	239,530	522,705	7,500	1,849,023	1,683,174	3,532,197
VISALIA	1,316,339	891,444	484,963	1,069,242	10,000	3,771,989	3,443,089	7,215,078
WOODLAKE	70,852	47,982	30,645	57,552	2,000	209,029	185,323	394,353
TUOLUMNE COUNTY								
SONORA	48,164	32,617	32,562	39,123	1,000	153,466	125,980	279,445
VENTURA COUNTY								
CAMARILLO	655,479	443,900	282,618	532,435	7,500	1,921,931	1,714,505	3,636,436
FILLMORE	152,570	103,322	69,465	123,930	4,000	453,287	399,070	852,357
MOORPARK	335,461	227,179	146,982	272,490	6,000	988,111	877,450	1,865,561
OJAI	70,916	48,026	34,857	57,604	2,000	213,403	185,493	398,896
OXNARD	1,868,088	1,265,096	796,569	1,517,420	10,000	5,457,174	4,886,273	10,343,446
PORT HUENEME	205,625	139,252	91,952	167,026	5,000	608,855	537,844	1,146,699
SAN BUENAVENTURA	1,019,630	690,508	436,959	828,230	10,000	2,985,328	2,667,000	5,652,328
SANTA PAULA	286,185	193,809	126,097	232,464	6,000	844,555	748,562	1,593,116
SIMI VALLEY	1,168,670	791,440	500,129	949,293	10,000	3,419,532	3,056,837	6,476,370
THOUSAND OAKS	1,172,997	794,370	501,962	952,807	10,000	3,432,136	3,068,153	6,500,290
YOLO COUNTY								
DAVIS	600,950	406,972	267,016	488,143	7,500	1,770,581	1,571,878	3,342,459
WEST SACRAMENTO	489,485	331,486	218,379	397,601	7,500	1,444,452	1,280,324	2,724,776
WINTERS	68,758	46,564	34,801	55,851	2,000	207,974	179,847	387,821
WOODLAND	557,113	377,285	247,888	452,534	7,500	1,642,319	1,457,214	3,099,534
YUBA COUNTY								
MARYSVILLE	122,184	82,745	43,987	99,248	3,000	351,163	319,590	670,753
WHEATLAND	34,462	23,338	15,853	27,993	1,000	102,647	90,141	192,788
Statewide Total	\$ 306,511,500	\$ 207,574,000	\$ 122,965,880	\$ 254,198,500	\$ 2,709,500	\$ 893,959,380	\$ 801,728,000	\$ 1,695,687,380

Notes:

1. The Highway Users Tax is also known as the "Motor Vehicle Fuel Tax", the "Gasoline Excise Tax" and "Article XIX Revenues."
2. Rolling Hills has no public streets and is therefore not eligible for HUTA or RMRA allocations.
3. Str&HwysCode §§ 2103, 2105, 2106, 2107 and RMRA amounts are paid monthly. Includes special payments for snow removal.
4. Str&HwysCode § 2107.5 amounts are typically paid by the State Controller once per year in July.
5. Str&HwysCode § 2103 allocations replace the former Prop42 TCRF revenues. Previously adjusted annually by the BOE until July 2019.

Local Streets and Roads - Projected FY2022-23 Revenues

0

Based on State Dept of Finance statewide revenue projections
Estimated May 2023

	Highway Users Tax Acct ⁽¹⁾ Streets & Hwys Code				TOTAL HUTA	Road Maintnc Rehab Acct	TOTAL Annual
	Sec2103 ⁽²⁾	Sec2104	Sec2105	Sec2106			
ALAMEDA COUNTY	8,001,370	13,337,776	6,074,352	403,616	27,817,114	20,892,129	48,709,243
ALPINE COUNTY	155,294	289,408	137,112	20,767	602,581	405,482	1,008,063
AMADOR COUNTY	781,224	700,859	514,902	188,865	2,185,850	2,039,829	4,225,679
BUTTE COUNTY	2,613,041	2,382,570	1,722,247	399,361	7,117,219	6,822,829	13,940,048
CALAVERAS COUNTY	1,181,920	992,536	779,000	317,606	3,271,062	3,086,074	6,357,136
COLUSA COUNTY	924,314	609,382	609,213	114,101	2,257,010	2,413,448	4,670,458
CONTRA COSTA COUNTY	6,750,953	10,818,916	5,166,507	868,749	23,605,125	17,627,204	41,232,329
DEL NORTE COUNTY	478,730	323,278	315,529	109,107	1,226,644	1,249,997	2,476,641
EL DORADO COUNTY	2,494,698	3,558,772	1,928,061	802,885	8,784,416	6,513,829	15,298,245
FRESNO COUNTY	8,757,972	9,384,732	5,772,354	1,169,616	25,084,674	22,867,668	47,952,342
GLENN COUNTY	1,123,200	745,625	740,298	136,119	2,745,242	2,932,752	5,677,994
HUMBOLDT COUNTY	2,122,154	1,656,647	1,398,706	377,265	5,554,772	5,541,091	11,095,863
IMPERIAL COUNTY	3,951,166	2,383,540	2,604,202	413,514	9,352,422	10,316,765	19,669,187
INYO COUNTY	1,308,494	959,621	862,424	120,162	3,250,701	3,416,568	6,667,269
KERN COUNTY	8,110,524	8,446,324	5,345,623	1,897,560	23,800,031	21,177,137	44,977,168
KINGS COUNTY	1,677,395	1,295,602	1,105,566	218,455	4,297,018	4,379,793	8,676,811
LAKE COUNTY	1,166,622	961,897	768,917	317,156	3,214,592	3,046,130	6,260,722
LASSEN COUNTY	1,125,780	927,411	741,999	121,688	2,916,878	2,939,490	5,856,368
LOS ANGELES COUNTY	48,988,575	81,031,112	36,963,684	2,588,086	169,571,457	127,912,541	297,483,998
MADERA COUNTY	2,471,147	1,677,476	1,628,726	481,976	6,259,325	6,452,336	12,711,661
MARIN COUNTY	1,820,537	2,491,692	1,226,692	283,330	5,822,251	4,753,548	10,575,799
MARIPOSA COUNTY	744,430	531,125	490,652	125,999	1,892,206	1,943,759	3,835,965
MENDOCINO COUNTY	1,729,556	1,261,224	1,139,945	380,414	4,511,139	4,515,989	9,027,128
MERCED COUNTY	3,311,873	2,675,107	2,182,846	563,407	8,733,233	8,647,527	17,380,760
MODOC COUNTY	1,101,533	864,297	726,017	60,234	2,752,081	2,876,178	5,628,259
MONO COUNTY	807,872	772,824	532,466	30,372	2,143,534	2,109,410	4,252,944
MONTEREY COUNTY	3,677,613	4,243,431	2,423,904	855,826	11,200,774	9,602,500	20,803,274
NAPA COUNTY	1,276,800	1,524,261	841,535	297,907	3,940,503	3,333,813	7,274,316
NEVADA COUNTY	1,338,539	1,632,950	882,227	297,331	4,151,047	3,495,017	7,646,064
ORANGE COUNTY	17,144,107	29,783,829	13,493,373	740,863	61,162,172	44,764,443	105,926,615
PLACER COUNTY	3,792,029	5,973,891	3,004,292	822,414	13,592,626	9,901,248	23,493,874
PLUMAS COUNTY	901,177	1,038,343	593,963	144,682	2,678,165	2,353,036	5,031,201
RIVERSIDE COUNTY	14,963,672	22,584,177	10,681,766	1,580,100	49,809,715	39,071,177	88,880,892
SACRAMENTO COUNTY	10,444,835	14,476,257	7,317,707	2,077,851	34,316,650	27,272,184	61,588,834
SAN BENITO COUNTY	890,224	779,131	586,744	157,425	2,413,524	2,324,435	4,737,959
SAN BERNARDINO COUNTY	14,109,396	21,222,515	10,012,174	1,427,012	46,771,097	36,840,605	83,611,702
SAN DIEGO COUNTY	19,466,707	31,053,151	14,486,244	1,717,610	66,723,712	50,828,912	117,552,624
SAN FRANCISCO COUNTY	3,693,603	4,839,210	2,434,443	9,600	10,976,856	9,644,252	20,621,108
SAN JOAQUIN COUNTY	5,964,988	7,566,885	3,931,506	878,875	18,342,254	15,574,994	33,917,248
SAN LUIS OBISPO COUNTY	3,223,825	3,290,992	2,124,813	634,477	9,274,107	8,417,628	17,691,735
SAN MATEO COUNTY	4,278,937	7,019,667	3,222,164	269,508	14,790,276	11,172,599	25,962,875
SANTA BARBARA COUNTY	3,247,466	4,295,024	2,248,600	791,755	10,582,845	8,479,358	19,062,203
SANTA CLARA COUNTY	9,982,317	16,559,641	7,448,964	291,397	34,282,319	26,064,518	60,346,837
SANTA CRUZ COUNTY	2,106,653	2,722,623	1,476,682	617,925	6,923,883	5,500,615	12,424,498
SHASTA COUNTY	2,485,524	2,443,082	1,638,201	395,750	6,962,557	6,489,873	13,452,430
SIERRA COUNTY	441,751	432,306	291,157	34,363	1,199,577	1,153,441	2,353,018
SISKIYOU COUNTY	1,792,342	1,544,584	1,181,327	196,051	4,714,304	4,679,927	9,394,231
SOLANO COUNTY	3,093,846	4,445,219	2,050,072	192,450	9,781,587	8,078,244	17,859,831
SONOMA COUNTY	4,503,213	5,542,358	2,968,054	901,429	13,915,054	11,758,199	25,673,253
STANISLAUS COUNTY	4,644,352	5,481,629	3,061,079	697,356	13,884,416	12,126,722	26,011,138
SUTTER COUNTY	1,426,970	1,157,456	940,512	204,361	3,729,299	3,725,918	7,455,217
TEHAMA COUNTY	1,573,476	1,003,705	1,037,073	251,130	3,865,384	4,108,454	7,973,838
TRINITY COUNTY	827,777	691,656	545,585	88,454	2,153,472	2,161,382	4,314,854
TULARE COUNTY	5,590,085	4,584,606	3,684,409	720,802	14,579,902	14,596,097	29,175,999
TUOLUMNE COUNTY	1,096,722	1,022,718	722,846	313,083	3,155,369	2,863,616	6,018,985
VENTURA COUNTY	5,280,890	8,441,722	3,998,720	604,176	18,325,508	13,788,768	32,114,276
YOLO COUNTY	1,998,046	2,182,632	1,316,907	174,178	5,671,763	5,217,037	10,888,800
YUBA COUNTY	1,133,246	868,595	746,919	284,181	3,032,941	2,958,984	5,991,925
Total	\$ 270,091,500	\$ 353,534,000	\$ 183,516,000	\$ 31,621,840	\$ 838,763,340	\$ 801,728,000	\$ 1,640,491,340

Notes:

- The Highway Users Tax is also known as the "Motor Vehicle Fuel Tax", the "Gasoline Excise Tax" and "Article XIX Revenues."
- Str&HwysCode § 2103 allocations replace the former Prop42 TCRF revenues. Previously adjusted annually by the BOE until July 2019.

Local Streets and Roads - Projected FY2023-24 Revenues

Based on State Dept of Finance statewide revenue projections
Estimated May 2023

	Highway Users Tax Acct ⁽¹⁾				TOTAL HUTA	Road Maintnc Rehab Acct	TOTAL Annual
	Sec2103 ⁽²⁾	Sec2104	Sec2105	Sec2106			
ALAMEDA COUNTY	9,080,300	14,354,458	6,537,380	434,256	30,406,394	23,750,924	54,157,318
ALPINE COUNTY	176,234	311,468	147,564	21,636	656,902	460,967	1,117,869
AMADOR COUNTY	886,567	754,283	554,151	202,805	2,397,806	2,318,951	4,716,757
BUTTE COUNTY	2,965,392	2,564,183	1,853,528	429,670	7,812,773	7,756,438	15,569,211
CALAVERAS COUNTY	1,341,294	1,068,193	838,381	341,558	3,589,425	3,508,360	7,097,785
COLUSA COUNTY	1,048,951	655,833	655,651	122,227	2,482,663	2,743,695	5,226,357
CONTRA COSTA COUNTY	7,661,273	11,643,596	5,560,333	935,558	25,800,760	20,039,240	45,840,000
DEL NORTE COUNTY	543,283	347,920	339,581	116,845	1,347,629	1,421,042	2,768,671
EL DORADO COUNTY	2,831,091	3,830,042	2,075,031	864,572	9,600,736	7,405,155	17,005,891
FRESNO COUNTY	9,938,925	10,100,090	6,212,362	1,259,822	27,511,198	25,996,788	53,507,986
GLENN COUNTY	1,274,656	802,461	796,728	145,957	3,019,803	3,334,058	6,353,861
HUMBOLDT COUNTY	2,408,312	1,782,926	1,505,325	405,855	6,102,418	6,299,312	12,401,730
IMPERIAL COUNTY	4,483,954	2,565,227	2,802,712	444,923	10,296,816	11,728,470	22,025,286
INYO COUNTY	1,484,935	1,032,769	928,164	128,759	3,574,627	3,884,077	7,458,705
KERN COUNTY	9,204,173	9,090,151	5,753,102	2,044,372	26,091,798	24,074,931	50,166,730
KINGS COUNTY	1,903,580	1,394,360	1,189,840	234,696	4,722,476	4,979,106	9,701,582
LAKE COUNTY	1,323,933	1,035,218	827,529	341,073	3,527,753	3,462,950	6,990,703
LASSEN COUNTY	1,277,584	998,104	798,559	130,405	3,204,651	3,341,718	6,546,369
LOS ANGELES COUNTY	55,594,350	87,207,769	39,781,304	2,788,595	185,372,019	145,415,580	330,787,599
MADERA COUNTY	2,804,364	1,805,343	1,752,878	518,709	6,881,295	7,335,248	14,216,542
MARIN COUNTY	2,066,024	2,681,623	1,320,199	304,615	6,372,461	5,404,004	11,776,466
MARIPOSA COUNTY	844,811	571,610	528,053	135,051	2,079,525	2,209,735	4,289,260
MENDOCINO COUNTY	1,962,775	1,357,362	1,226,839	409,249	4,956,225	5,133,939	10,090,164
MERCED COUNTY	3,758,456	2,879,019	2,349,237	606,473	9,593,186	9,830,820	19,424,005
MODOC COUNTY	1,250,067	930,179	781,359	64,171	3,025,776	3,269,743	6,295,519
MONO COUNTY	916,808	831,733	573,054	31,987	2,353,582	2,398,053	4,751,636
MONTEREY COUNTY	4,173,514	4,566,890	2,608,670	921,631	12,270,705	10,916,468	23,187,172
NAPA COUNTY	1,448,968	1,640,449	905,682	320,327	4,315,426	3,789,999	8,105,425
NEVADA COUNTY	1,519,032	1,757,423	949,476	319,706	4,545,637	3,973,261	8,518,898
ORANGE COUNTY	19,455,873	32,054,124	14,521,928	797,727	66,829,652	50,889,830	117,719,482
PLACER COUNTY	4,303,358	6,429,255	3,233,299	885,620	14,851,533	11,256,095	26,107,628
PLUMAS COUNTY	1,022,695	1,117,491	639,239	155,186	2,934,611	2,675,016	5,609,627
RIVERSIDE COUNTY	16,981,421	24,305,673	11,496,002	1,702,225	54,485,321	44,417,520	98,902,841
SACRAMENTO COUNTY	11,853,250	15,579,721	7,875,512	2,238,683	37,547,165	31,004,000	68,551,165
SAN BENITO COUNTY	1,010,265	838,521	631,470	168,920	2,649,175	2,642,501	5,291,677
SAN BERNARDINO COUNTY	16,011,952	22,840,217	10,775,369	1,537,233	51,164,771	41,881,726	93,046,497
SAN DIEGO COUNTY	22,091,660	33,420,201	15,590,483	1,850,429	72,952,772	57,784,136	130,736,909
SAN FRANCISCO COUNTY	4,191,660	5,208,082	2,620,013	9,600	12,029,355	10,963,933	22,993,288
SAN JOAQUIN COUNTY	6,769,326	8,143,676	4,231,192	946,472	20,090,666	17,706,214	37,796,880
SAN LUIS OBISPO COUNTY	3,658,536	3,541,850	2,286,781	683,069	10,170,235	9,569,462	19,739,698
SAN MATEO COUNTY	4,855,922	7,554,746	3,467,779	289,720	16,168,167	12,701,413	28,869,580
SANTA BARBARA COUNTY	3,685,365	4,622,415	2,420,003	852,578	11,580,361	9,639,639	21,220,000
SANTA CLARA COUNTY	11,328,364	17,821,912	8,016,774	313,310	37,480,360	29,631,082	67,111,442
SANTA CRUZ COUNTY	2,390,721	2,930,157	1,589,245	665,229	7,575,352	6,253,297	13,828,649
SHASTA COUNTY	2,820,680	2,629,308	1,763,076	425,778	7,638,842	7,377,921	15,016,763
SIERRA COUNTY	501,318	465,259	313,351	36,289	1,316,216	1,311,273	2,627,490
SISKIYOU COUNTY	2,034,027	1,662,321	1,271,376	210,550	5,178,273	5,320,309	10,498,583
SOLANO COUNTY	3,511,030	4,784,059	2,206,342	206,669	10,708,100	9,183,638	19,891,739
SONOMA COUNTY	5,110,441	5,964,828	3,194,299	970,779	15,240,347	13,367,144	28,607,491
STANISLAUS COUNTY	5,270,611	5,899,470	3,294,415	750,838	15,215,334	13,786,094	29,001,428
SUTTER COUNTY	1,619,387	1,245,684	1,012,204	219,506	4,096,781	4,235,758	8,332,539
TEHAMA COUNTY	1,785,649	1,080,213	1,116,126	269,912	4,251,899	4,670,638	8,922,537
TRINITY COUNTY	939,397	744,378	587,173	94,586	2,365,535	2,457,137	4,822,671
TULARE COUNTY	6,343,870	4,934,071	3,965,259	776,106	16,019,307	16,593,368	32,612,675
TUOLUMNE COUNTY	1,244,607	1,100,675	777,946	336,683	3,459,912	3,255,462	6,715,373
VENTURA COUNTY	5,992,982	9,085,199	4,303,529	650,412	20,032,122	15,675,568	35,707,689
YOLO COUNTY	2,267,469	2,349,005	1,417,290	186,976	6,220,741	5,930,915	12,151,656
YUBA COUNTY	1,286,056	934,804	803,854	305,533	3,330,248	3,363,879	6,694,127
Total	\$ 222,210,500	\$ 326,378,000	\$ 169,684,000	\$ 30,106,746	\$ 748,379,246	\$ 801,728,000	\$ 1,749,223,620

Notes:

- The Highway Users Tax is also known as the "Motor Vehicle Fuel Tax", the "Gasoline Excise Tax" and "Article XIX Revenues."
- Str&HwysCode § 2103 allocations replace the former Prop42 TCRF revenues. Previously adjusted annually by the BOE until July 2019.