

Shared Revenue Estimates: State Revenue Allocations to Cities and Counties
Local Streets and Roads Estimates: 2023-24, 2024-25
Including Highway Users Tax Account (HUTA) and
Road Maintenance and Rehabilitation Account (RMRA)

The state of California imposes per-gallon excise taxes on gasoline and diesel fuel, sales taxes on gasoline and diesel fuel and registration taxes on motor vehicles with allocations dedicated to transportation purposes.¹ The local (city and county) portions of these allocations flow through the Highway Users Tax Account (HUTA), the familiar gasoline tax revenues that have been in place for decades, and the Road Maintenance and Rehabilitation Account (RMRA) which allocates much of the revenue from the Road Repair and Accountability Act of 2017 (SB1 Beall).

State taxes transferred to and allocated through the state Highway Users Tax Account (HUTA) include:

- The per gallon “gasoline tax” and “diesel fuel tax” imposed on the use of vehicle fuels.
- The “use fuel tax,” imposed on vendors and users of motor vehicle fuels that are not taxed under either the gasoline or diesel fuel tax, such as liquefied petroleum gas, ethanol, methanol and natural gas (both liquid and gaseous) for use on state highways. Use Fuel Tax rates vary depending on the type of fuel.
- Variable rate per gallon gasoline diesel fuel excise taxes imposed in 2010-11 in a complicated arrangement known as the “fuel tax swap.” This rate replaced the previous Proposition 42 sales tax on gasoline.

Transportation taxes allocated to cities and counties through the Road Maintenance and Rehabilitation Account (RMRA) established by the Road Repair and Accountability Act of 2017 (SB1 Beall) include:

- An additional 12 cent per gallon increase to the gasoline excise tax effective November 1, 2017 with annual inflation adjustments beginning July 1, 2020.
- An additional 20 cent per gallon increase to the diesel fuel excise tax effective November 1, 2017 with half of the revenues going to the state Trade Corridor Enhancement Account (TCEA) and half to the RMRA. Annual inflation adjustments beginning July 1, 2020.
- An additional vehicle registration tax called the “Transportation Improvement Fee” with rates based on the value of the motor vehicle effective January 1, 2018 with annual inflation adjustments beginning July 1, 2020.
- An additional \$100 vehicle registration tax on zero emissions vehicles of model year 2020 or later effective July 1, 2020 with annual inflation adjustments beginning July 1, 2021.

The Road Repair and Accountability Act of 2017 (SB1 Beall) also adopted annual inflationary adjustments beginning July 1, 2020 to all per-gallon motor vehicle fuel excise taxes including the rates allocated through the Highway Users Tax Account (HUTA).

¹ Taxes on aircraft jet fuel are transferred to the state Aeronautics Account.

Highway Users Tax Account (HUTA)

Revenue Allocations – Streets & Highways Code Sec 2103-2108 “HUTA”

Cities and counties receive revenue from the motor vehicle fuel taxes imposed pursuant to Revenue and Taxation Code Section 7360(a) and (b) through the Highway User Tax Account under the following formulas outlined in the Streets and Highways code and illustrated in Figure 1.

Section 2104. Section 2104 allocates funds to counties with designated allotments for engineering and administration, snow removal, heavy rainfall / storm damage as well as county streets, roads and public mass transit guideways and facilities.

Section 2105. Section 2105(a) allocates 11.5 percent of the tax revenues in excess of 9 cents per gallon (i.e. the Proposition 111 rate) monthly among counties based on population.

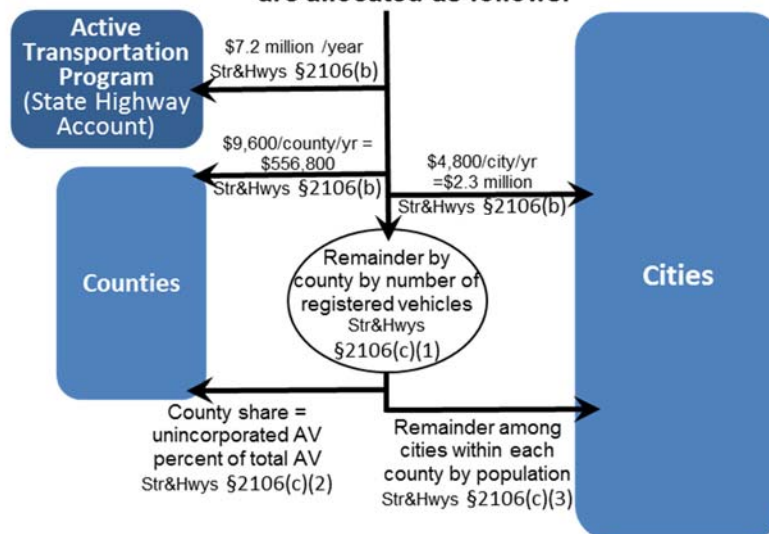
Section 2105(b) allocates 11.5 percent of the tax revenues in excess of 9 cents per gallon (i.e. the Proposition 111 rate) monthly among cities based on population.

Section 2106. Revenues equal to 1.04 cents per gallon are allocated as follows:

- \$7.2 million per year to the State Bicycle Transportation Account.
- \$400 per month to each city (\$2,308,800 per year among the 481 eligible cities²)
- \$800 per month to each county (\$556,800 per year among the 58 counties)
- The residual amount to each county and the cities in that county based on registered vehicles. In each county, from this amount, the county receives an allotment based on the share of assessed value of the county which is in the unincorporated area. The remainder is allocated to the cities within the county based on population.

Streets & Highways Code Section 2106

Revenues equal to 1.04 cents per gallon
are allocated as follows:



² The city of Rolling Hills has only private streets and is therefore not eligible to receive these allocations.

Section 2107. This section provides monthly allocations to cities of 1.315 cents per gallon of gasoline, 1.8 cents per gallon of diesel, and 2.59 cents per liquefied petroleum gas (LPG), as follows.

- a. Each city with snow removal costs in excess of \$5,000 is allocated 50 percent of the cost exceeding \$5,000.
- b. The remainder is allocated to cities based on population.

Section 2107.5. These funds (about \$2.7 million per year) are allocated to cities annually in July based on population as follows:

Streets & Highway Code §2107.5	
City Population	Annual Allocation
over 500,000	\$ 20,000
100,000 to 500,000	\$ 10,000
50,000 to 99,999	\$ 7,500
25,000 to 49,999	\$ 6,000
20,000 to 24,999	\$ 5,000
15,000 to 19,999	\$ 4,000
10,000 to 14,999	\$ 3,000
5,000 to 9,999	\$ 2,000
less than 5,000	\$ 1,000

Section 2107.5 funds must be used for engineering costs and administrative expenses related to city streets. Cities with populations under 10,000 may also expend the moneys for street construction or acquisition of street rights-of-way.

Section 2103 HUTA and the 2010 Gasoline Sales Tax – Excise Tax Swap

In March 2010 as a part of a special budget session called by Governor Schwarzenegger, the Legislature enacted a swap of state sales taxes on gasoline for a gasoline excise tax. Intended to be “revenue neutral,” the fuel tax swap provided the Legislature with greater flexibility in the use of funds, in particular relieving the general fund from the cost of state transportation debt service payments. The fuel tax swap:

1. Repealed the state sales tax on gasoline (local rates including the Bradley Burns are NOT affected);
2. Increased the excise tax on gasoline by 17.322 cents and added an annual adjustment mechanism intended to ensure the new excise tax provides, over time, the same amount of revenues expected from the sales tax on gas (no more, no less);
3. Increased the sales tax on diesel by 1.75 percent and allocated 75 percent to local transit agencies and 25 percent to state transit programs. The excise tax on diesel was reduced from 18 cents to 13.6 cents. Sales tax revenues from diesel must go to transit funding.
4. Provided for a specific allocation of the funds among state and local transportation needs.

Revenues from the new Section 2103 excise tax rate are now allocated as follows:

1. State transportation debt service;
2. Remainder allocated:
 - a. 44 percent to the State Transportation Improvement Program (STIP);
 - b. 12 percent State Highway Operation and Protection Program (SHOPP);
 - c. 44 percent evenly split between cities and counties using current HUTA formulas.

Section 2103 funds are allocated to cities on a per capita basis and to counties 75 percent based on the proportion of registered vehicles and 25 percent based on the proportion of maintained county road miles.

The law included expressed legislative intent to fully replace the local streets and road funds cities and counties would have received under Proposition 42 state sales tax on gasoline with allocations from the new higher motor vehicle excise tax (HUTA) rate.

However, the swap created certain revenue effects related to the timing and receipt of revenues. In particular, the law provided that the new excise tax rate be adjusted annually by the BOE to garner an amount of revenues equal to what Prop42 would have provided in the prior year. Thus, the annual Sec 2103 funds were always “looking backward.” If the Section 2103 amounts generated less than Prop42 would have, the difference was made up until the following year.

In the years following the swap, there were a number of snafus and changes in interpretation of the Section 2103 allocation. In FY2011-12 SCO allocated more money to cities and counties and did not fully backfill state transportation programs for weight fees that were used for debt service and loans that those funds would have otherwise received. This was contrary to the Legislature’s intention, but the statute was not clear. The statute was clarified in the 2013 budget to clarify the original intent of the weight fee swap to fully backfill state transportation funds. [Streets & Highways Code 2103 (a)(1)(D)].

The Section 2103 Local Streets and Roads allocation to cities and counties have varied and declined dramatically and, due to BOE’s failure to enact a rate increase in 2018, fell to \$244 million for FY2018-19, about 5 percent down from prior year.

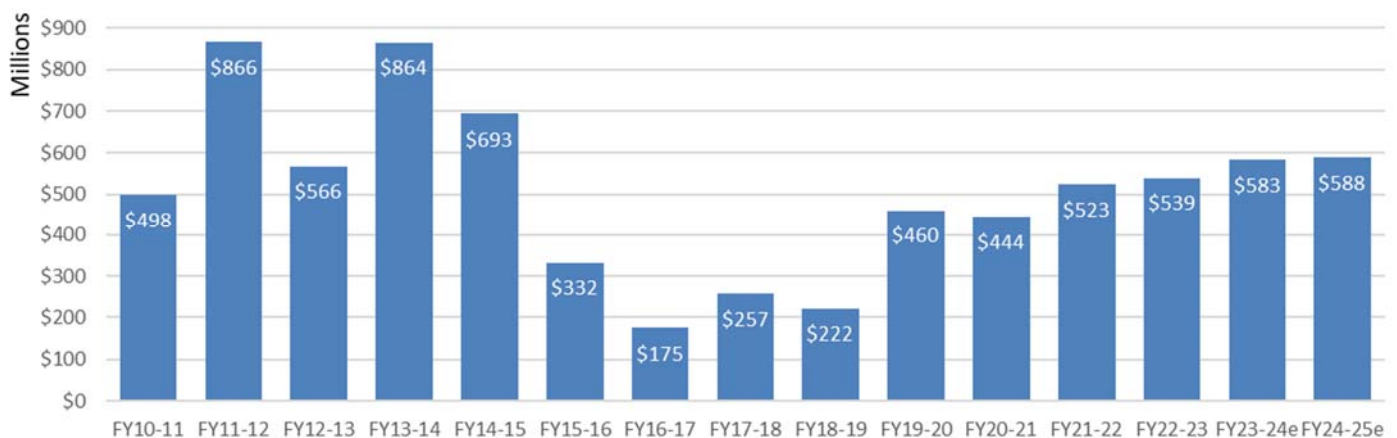
Changes to HUTA Allocated Rates, Including the Variable Rate by the Road Repair and Accountability Act of 2017 (SB1 Beall)

In addition to increasing various fuel and motor vehicle registration taxes, the Road Repair and Accountability Act of 2017 (SB1 Beall) removed BOE’s discretionary rate setting role over the Section 2103 variable rate and reset the variable rate at 17.3 cents per gallon on July 1, 2019, up from the current 11.7 cents. This adjustment more than doubled Section 2103 revenue allocations for FY2019-20 over the prior year.

With regard to diesel fuel taxes, SB1 also eliminated the price-based adjustment mechanism applied to the diesel fuel tax rate.

On July 1, 2020, and every July 1 thereafter, the gasoline and diesel fuel excise tax rates including the 18 cent per gallon base rate, the 17.3 percent per gallon rate, the diesel fuel excise tax rate and vehicle registration taxes are increased by the change in the California Consumer Price Index.

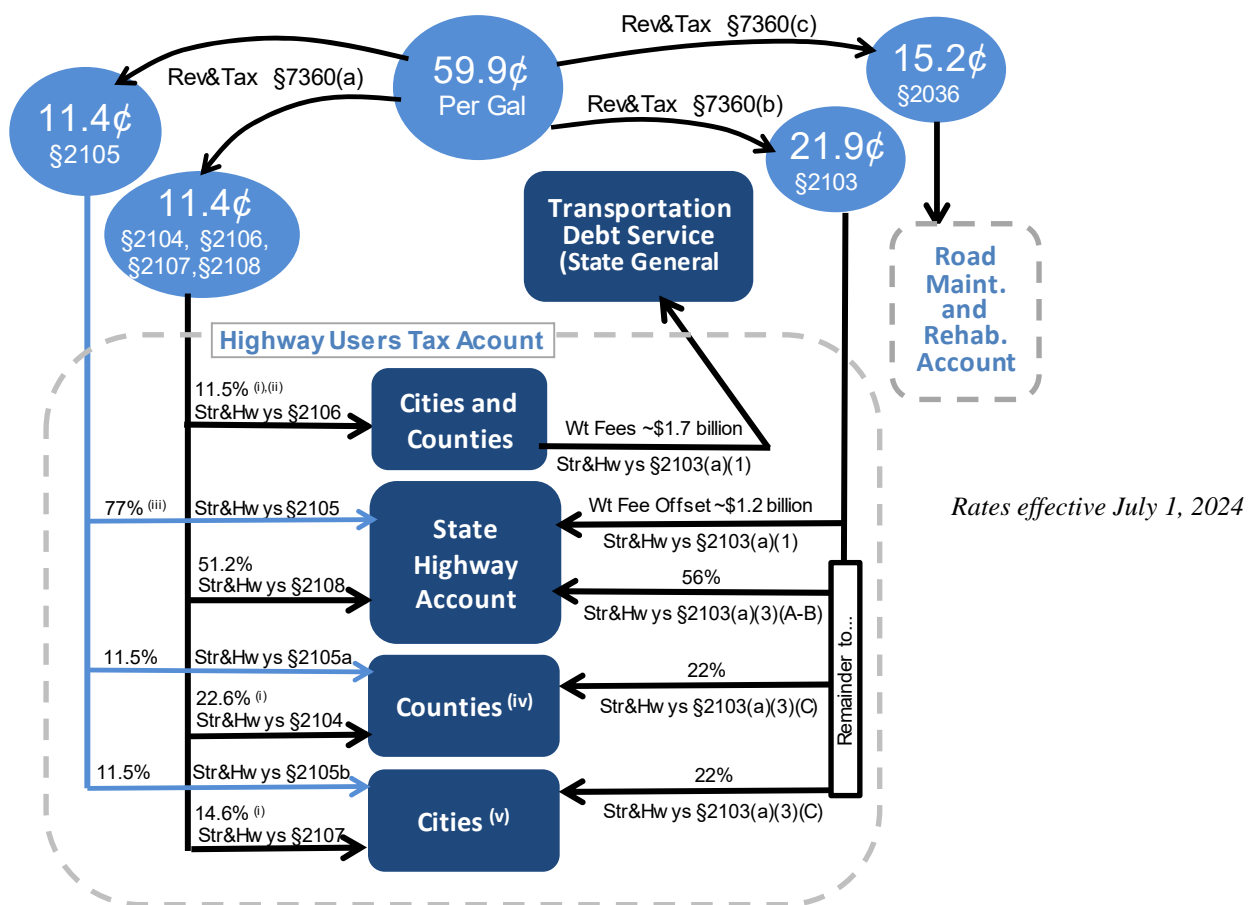
Streets & Highways Code Section 2103 Variable Gas Tax Allocations to Cities and Counties



California Gasoline Excise Tax Rates - Per Gallon				
Effective Date	Base Rate	Sec2103	SB1 Rate	Total
July 1, 2015	\$ 0.180	\$ 0.120		\$ 0.300
July 1, 2016	\$ 0.180	\$ 0.098		\$ 0.278
July 1, 2017	\$ 0.180	\$ 0.117		\$ 0.297
Nov 1, 2017*	\$ 0.180	\$ 0.117	\$ 0.120	\$ 0.417
July 1, 2019	\$ 0.180	\$ 0.173	\$ 0.120	\$ 0.473
July 1, 2020	\$ 0.192	\$ 0.185	\$ 0.128	\$ 0.505
July 1, 2021	\$ 0.194	\$ 0.187	\$ 0.130	\$ 0.511
July 1, 2022	\$ 0.205	\$ 0.197	\$ 0.137	\$ 0.539
July 1, 2023	\$ 0.220	\$ 0.212	\$ 0.147	\$ 0.579
July 1, 2024	\$ 0.228	\$ 0.219	\$ 0.152	\$ 0.599

California Diesel Excise Tax Rates			
Effective Date	Base Rate	SB1 Rate	Total
July 1, 2017	\$ 0.160		\$ 0.160
Nov 1, 2017*	\$ 0.160	\$ 0.200	\$ 0.360
July 1, 2019	\$ 0.160	\$ 0.200	\$ 0.360
July 1, 2020	\$ 0.171	\$ 0.214	\$ 0.385
July 1, 2021	\$ 0.173	\$ 0.216	\$ 0.389
July 1, 2022	\$ 0.182	\$ 0.228	\$ 0.410
July 1, 2023	\$ 0.196	\$ 0.245	\$ 0.441
July 1, 2024	\$ 0.202	\$ 0.252	\$ 0.454

Allocation of Gasoline Excise Tax Revenues



(i) The 4.39¢ local share of diesel fuel tax is allocated 1.8¢ to counties and 2.59¢ to cities.

(ii) Str&Hw y Code §2106 funds are distributed based on registered vehicles, assessed property valuation, and population.

(iii) A portion of funds in State Highway Account is allocated among counties and cities for Regional Transportation Improvement Programs.

(iv) County apportionments are based on numbers of registered vehicles and county road mileage.

(v) City apportionments are based on population.

(vi) Beginning July 1, 2020 and annually thereafter, these rates are subject to an annual cost-of-living adjustment.

Use of Funds: HUTA

The use of local Motor Vehicle Fuel Tax funds is restricted by Article XIX of the California State Constitution and by Streets and Highways Code Section 2101. All Motor Vehicle Fuel Tax funds allocated from the Highway Users Tax Account must be expended for the following:

- (a) The research, planning, construction, improvement, maintenance, and operation of public streets and highways (and their related public facilities for nonmotorized traffic), including the mitigation of their environmental effects, the payment for property taken or damaged for such purposes, and the administrative costs necessarily incurred in the foregoing purposes.
- (b) The research and planning for exclusive public mass transit guideways (and their related fixed facilities), the payment for property taken or damaged for such purposes, and the administrative costs necessarily incurred in the foregoing purposes.
- (c) The construction and improvement of exclusive public mass transit guideways (and their related fixed facilities), including the mitigation of their environmental effects, the payment for property taken or damaged for such purposes, the administrative costs necessarily incurred in the foregoing purposes, and the maintenance of the structures and the immediate right-of-way for the public mass transit guideways.
- (d) The payment of principal and interest on voter-approved bonds issued for the purposes specified above.

Three Year State General Fund TCRF Loan Repayment Funds

SB1 stipulated the repayment of \$706 million by the state General Fund to transportation funds over three fiscal years: 2017-18, 2018-19, and 2019-20. Under SB1, \$75 million was allocated to local streets and roads from repayments of Transportation Congestion Relief Funds (TCRF) in each of these three years. These funds were allocated half to cities and half to counties with the city funds allocated among cities on a per capita basis, the county funds allocated among counties based on numbers of registered vehicles and county road mileage.

These TCRF revenues may be deposited in local HUTA funds.³ However, these TCRF funds carry slightly different use requirements than HUTA funds. TCRF funds may be expended only for street and highway maintenance, rehabilitation, reconstruction or storm damage repair. For these purposes,

- “Maintenance” means patching and/or overlay and sealing.
- “Reconstruction” includes any overlay, sealing or widening of the roadway, if the widening is necessary to bring the roadway width to the state minimum standards, but does not include widening for the purpose of traffic capacity.
- “Storm damage repair” is repair or reconstruction of local streets and highways and related drainage improvements that have been damaged due to winter storms and flooding, and construction of drainage improvements to mitigate future roadway flooding and damage problems, in those jurisdictions that have been declared disaster areas by the President of the United States.

³ Note that the “loan repayment” is between the state general fund and state transportation funds. From an accounting standpoint this is NOT a debt repayment to local agencies, it is simply revenue.

Road Maintenance and Rehabilitation Account (RMRA)

Revenue Allocations – Streets & Highways Code Sec 2031 “RMRA”

The Road Repair and Accountability Act of 2017 (SB1 Beall) represented a significant additional investment in California’s transportation systems of over \$5 billion per year. The Act increased per gallon fuel excise taxes, diesel fuel sales taxes and vehicle registration taxes, stabilized the problematic price-based fuel tax rates and provided for inflationary adjustments to rates in future years. The Act is more than doubling local streets and road funds allocated through the Highway Users Tax Account (HUTA) and through the Road Maintenance and Rehabilitation Account (RMRA) which it established.

The RMRA receives funds⁴ from the following new taxes imposed under the Road Repair and Accountability Act of 2017:

- A 12 cent per gallon increase to the gasoline excise tax effective November 1, 2017.
- A 20 cent per gallon increase to the diesel fuel excise tax effective November 1, 2017, half of which will be allocated to Trade Corridors Enhancement Account (TCEA) with the remaining half to the RMRA.
- A new vehicle registration tax called the “transportation improvement fee,” effective January 1, 2018, based on the market value of the vehicle.
- An additional new \$100 vehicle registration tax on zero emission vehicles model year 2020 and later effective July 1, 2020.
- Annual rate increases to these taxes every July 1 (January 1 for the registration fees) for the change in the California Consumer Price Index. The first adjustment made on July 1, 2020 covered CPI change for two years: November 1, 2017 through November 12, 2019.

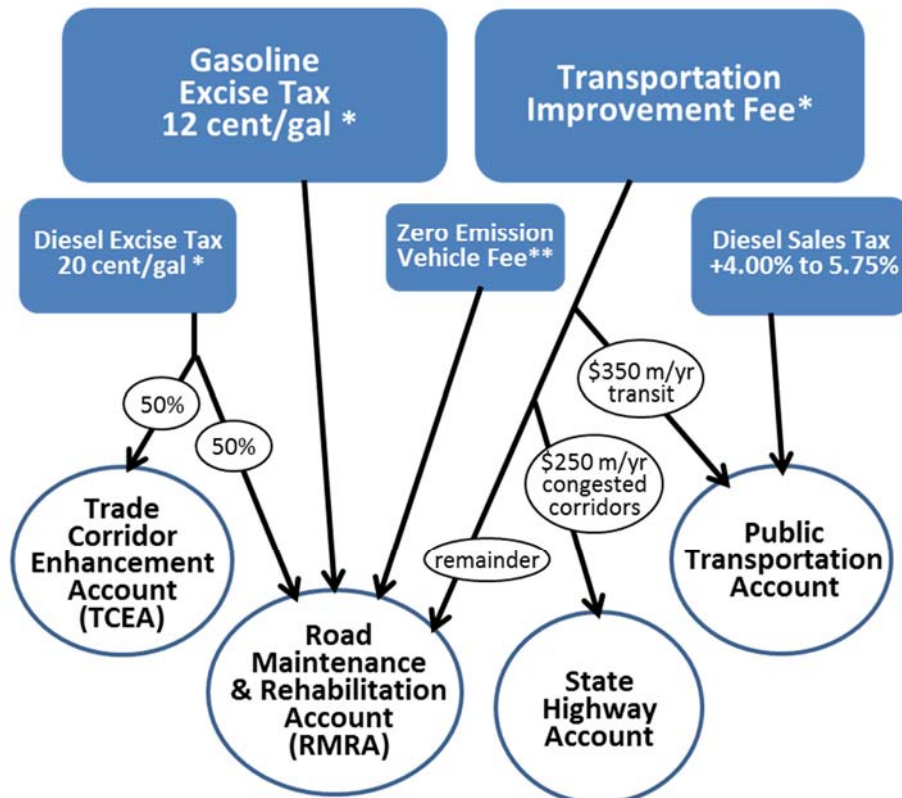
SB1 Transportation Improvement Fee						
Vehicle Value	Jan 2018	Jan 2020	Jan 2021	Jan 2022	Jan 2023	Jan 2024
0 - \$4,999	\$ 25	\$ 27	\$ 27	\$ 28	\$ 29	\$ 32
\$5,000 - \$24,999	\$ 52	\$ 54	\$ 55	\$ 56	\$ 59	\$ 65
\$25,000 - \$34,999	\$ 105	\$ 107	\$ 110	\$ 112	\$ 118	\$ 129
\$35,000 - \$59,999	\$ 157	\$ 161	\$ 165	\$ 168	\$ 177	\$ 194
\$60,000 & over	\$ 183	\$ 188	\$ 192	\$ 196	\$ 206	\$ 227

SB1 Road Improvement Fee (ZEV)					
	Jan 2020	Jan 2021	Jan 2022	Jan 2023	Jan 2024
ZEV vehicle*	\$ 100	\$ 101	\$ 103	\$ 108	\$ 118

*2020 or later models

⁴ In addition, funds from a 4 percent increase in the diesel sales tax to 5.75 percent from the prior 1.75 percent effective November 1, 2017 are allocated to the Public Transportation Account.

Road Maintenance and Rehabilitation Account Revenues



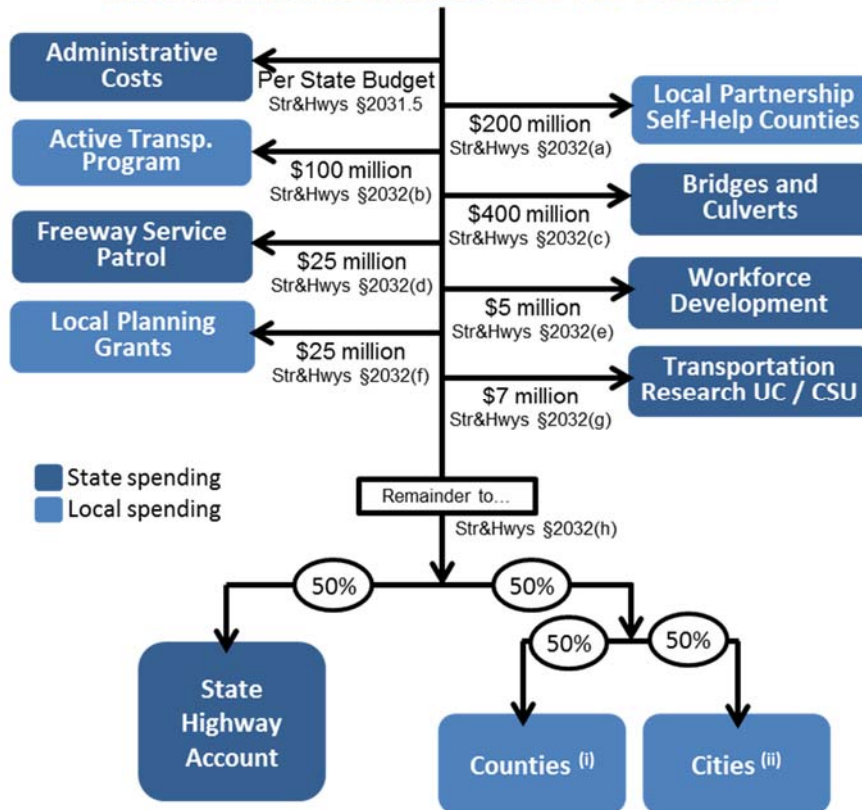
* adjusted for inflation annually beginning 7/1/2020

** effective 7/1/2020 adjusted for inflation annually beginning 7/1/2021

The Road Repair and Accountability Act directs the State Controller to allocate, on a monthly basis, fifty percent of the revenues in the RMRA to the State Highway Operation and Protection Program (SHOP) in the State Highway Account and half to cities and counties. But there are a series of specific program allocations, subject to appropriation in the annual state budget, to be taken out first:

1. Administrative costs.
2. \$200 million for the State-Local-Partnership Program for existing and aspiring self-help jurisdictions.
3. \$100 million annually for the Active Transportation Program for the purpose of encouraging increased use of active modes of transportation, such as biking and walking.
4. \$400 million for state bridge and culvert maintenance and rehabilitation.
5. \$25 million for the state's Freeway Service Patrol program.
6. \$5 million for five years through FY 2021-22 for pre-apprenticeship training programs of the California Workforce Development Board.
7. \$25 million for local planning grants to encourage local and regional planning.
8. \$7 million for transportation research and transportation-related workforce education, training, and development including \$5 million to the University of California and \$2 million to the California State University.

Allocation of Road Maintenance and Rehabilitation Account Revenues



(i) County apportionments are based on numbers of registered vehicles and county road mileage.
(ii) City apportionments are based on population.

Use of Funds: RMRA [Streets and Highways Code Section 2030]

The use of RMRA local streets and roads funds is similar but, not identical, to HUTA use rules. Pursuant to Streets and Highways Code Section 2030, RMRA local streets and roads allocations must be used for projects “that include, but are not limited to,” the following

- Road maintenance and rehabilitation
- Safety projects
- Railroad grade separations
- Traffic control devices
- Complete street components, “including active transportation purposes, pedestrian and bicycle safety projects, transit facilities, and drainage and storm-water capture projects in conjunction with any other allowable project.”

RMRA funds may also be used to satisfy a match requirement for projects eligible for state or federal funds.

SB1 also contains non-obligatory intent language regarding the use of funds. “To the extent possible and cost effective,” cities and counties are to use a use:

- advanced recycling techniques that reduce greenhouse gas emissions;
- automotive technologies, ZEV fueling, infrastructure-to-vehicle;
- communications autonomous vehicle systems;

- resiliency re climate change, fires, floods, sea level rise; and
- complete street elements, access for bicycles, pedestrians.

If a city or county has an average Pavement Condition Index that meets or exceeds 80, the city or county may spend its RMRA funds on transportation priorities other than these. [Streets and Highways Code Sec 2037]

Maintenance of Effort: RMRA [Streets and Highways Code Sec 2036]

The Road Repair and Accountability Act contains a local agency maintenance of effort (MOE) requirement that applies to funds allocated through the RMRA. The Act states that the MOE requirement is to ensure that these new roads funds do not supplant existing levels of city and county general revenue spending on streets and roads. The MOE for the receipt of RMRA funds state that a city or county must maintain general fund spending for street, road, and highway purposes at no less than average of 2009–10, 2010–11, and 2011–12 years. In making this calculation an agency may exclude one-time funds. A city or county that fails to comply in a particular year may make it up with in additional expenditures in the following year.

The Act provides that the State Controller may perform audits to ensure compliance with these MOE rules. If the State Controller determines that a city or county has not met its MOE, the agency will be required to reimburse the state for the funds it received during that fiscal year. However, a city or county that fails to comply in a particular fiscal year may expend during that fiscal year and the following fiscal year a total amount that is sufficient to comply. Any funds withheld or returned as a result of a failure to comply will be reapportioned to the other counties and cities whose expenditures are in compliance.

For further guidance, see the State Controller's *"Guidelines Relating to Gas Tax Expenditures for Cities and Counties."*

Spending Plans and Reports: RMRA [Streets and Highways Code Sec 2034]

The Road Repair and Accountability Act stipulates that, prior to receiving RMRA funds in a fiscal year, a city or county must submit to the California Transportation Commission (CTC) a project list pursuant to an adopted budget. The list must include for each project: description, location, schedule, useful life. [Streets and Highways Code Sec 2034(a)]

The Road Repair and Accountability Act also requires that a city or county submit to the CTC an annual report of project completion in order to receive RMRA funds. The report must include descriptions of all projects for which RMRA funds were expended including: description, location, funds expended, completion date, estimated useful life of the project.

There are no additional use or reporting requirements on Highway Users Tax Account funds (Streets and Highways Code Sec 2103-2107) or on the three year transportation loan repayment funds.

Budgeting and Accounting for RMRA Funds: The ~60 Day Delay

The allocation of Road Maintenance and Rehabilitation Account (RMRA) revenues to cities and counties takes many weeks. It takes the State Controller's Office roughly 30 to 60 days from the time of revenue collection by the state, through the various statutory set asides to distribute the funds to cities and counties in monthly allocations. Consequently, the estimates shown in this report are for revenues collected for July through June are not received on a cash basis by local agencies until September through August. That is, for example, the FY2022-23 figure for your agency is revenues collected in and for July 2022 through June 2023 but distributed in

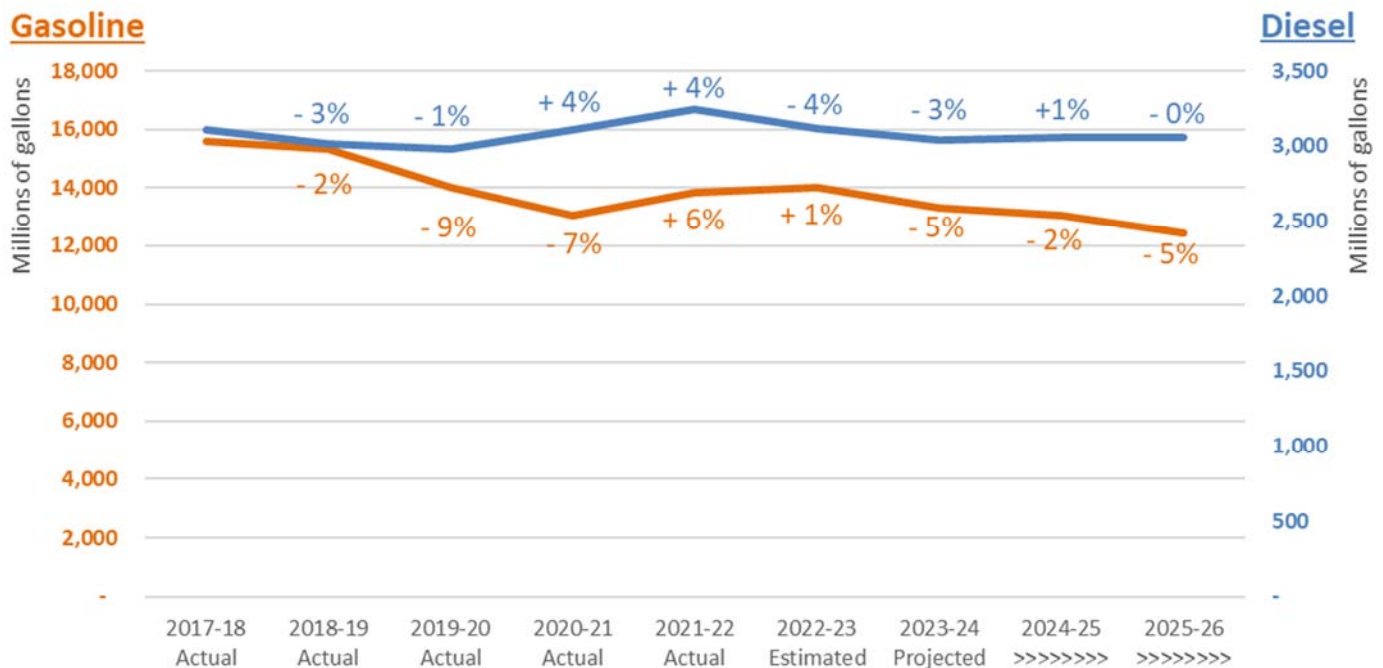
monthly allocations September 2022 through August 2023. Cities and counties thus have two choices in the budgeting and accounting of RMRA revenues:

- 1) apply a 60 day accrual policy to RMRA funds (*recommended*); or
- 2) adjust RMRA budgets (especially in FY2017-18) to reflect a distributed cash basis.

Local Streets and Roads (HUTA and RMRA) Revenue Estimates for FY2023-24 and FY2024-25

We have computed revenue estimates for each city and county using a model reflecting the local allocation formulas, latest population figures used by the State Controller for allocations and estimates by the state Department of Finance (DOF) of statewide HUTA and RMRA tax revenues provided with the **Governor's Proposed 2024-25 Budget (released January 10, 2024)** and analyses of SB1(Beall), The Road Repair and Accountability Act of 2017.

Fuel consumption was sharply down during the height of the COVID-19 pandemic but has largely recovered to its prior, slightly declining trajectory. Recently, fuel prices have increased steeply but the price of fuel no longer has a direct effect on local streets and roads revenues because all rates are per gallon, regardless of price.



Despite lower fuel consumption, scheduled rate increases stipulated in SB1 have kept local allocations of revenue growing at a modest pace. Total LSR allocations (including HUTA, TCRF, and RMRA) in up 8.3 percent in 2021-22 and 6.7 percent in FY2022-23. The Department of Finance projects total LSR allocations to cities and counties in 2023-24 will be 7.4 percent above the prior year. For the budget year FY2024-25, DOF estimates total statewide local streets and roads allocations will grow 4.1 percent.

HUTA (Highway Users Tax Account)

Revenues allocated to cities and counties through HUTA under Sections 2103-2107 of the Streets and Highways Code are derived from per gallon rates. As described above, these rates are adjusted annually on July 1. Revenue changes depend on the combined effects of 1) these rate adjustments, 2) taxable gallonage, and 3) the relative change of statutory transfers including the “weight fee offset” that pays state transportation bond debt.

Statewide fuel consumption (gallons) had been relatively flat in recent years. The COVID-19 pandemic and related restrictions caused a steep decline in fuel consumption in the spring of 2020. The effects of this are expected to ease up gradually as restrictions are lifted and travel resumes. Sec2104-2108 HUTA allocations (not including RMRA or the sec2103 variable fuel taxes) dropped 6.5 percent in FY2019-20 from the prior FY2018-19 year. But this drop-off was more than offset by the doubling of the Sec2103 allocations due to the reset of the formerly price-based rate. FY2019-20 contained the most dramatic fiscal and economic effects of the pandemic, those during the months of April through June 2020.

With a recovery in fuel consumption as the COVID effects eased and with additional rate adjustments kicking in each July 1, total HUTA revenue grew 8.3 percent in FY 2021-22 and 8.7 percent in FY2022-23. DOF now estimates 7.4 percent growth in current year FY2023-24 and 1.6 percent growth in budget year FY2024-25.

RMRA (Road Maintenance and Rehabilitation Account)⁵

The Road Repair and Accountability Act (SB1) taxes that provide funding to cities and counties through the RMRA began on November 1, 2017 when the new per-gallon fuel excise taxes took effect. On January 1, 2018, the new vehicle registration tax, the “Transportation Improvement Fee,” took effect. Cities, counties and other recipients of these revenues saw the first full year of these revenues in FY2018-19. A \$100 zero emission vehicle registration tax (“Road Improvement Fee”) began on July 1, 2020.

DOF estimates FY2023-24 RMRA revenues will be 7.4 percent higher than FY2022-23 actuals and that FY2024-25 revenues will grow by 6.9 percent over the current year.

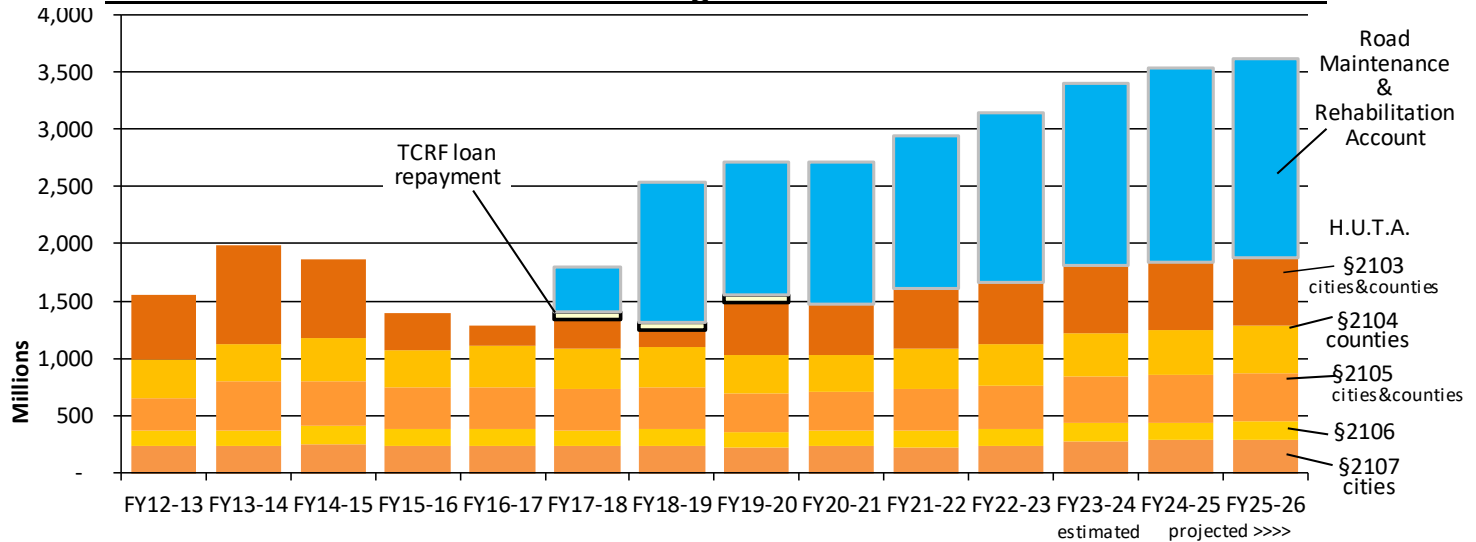
Why does city/county RMRA growth differ from city/county HUTA growth? Under SB1, various fixed-amount statutory allocations are made from the new SB1 tax rates prior to the city and county allocations.

Your Mileage Revenues May Vary

An individual city’s allocations will of course also be affected by change in the city’s population relative to the change in state population. Changes for allocations to counties will be affected other factors in the allocation rules including relative numbers of vehicle registrations, assessed values and maintained road miles.

⁵ Note that RMRA revenues are delayed 60 days from collection to allocation. That is, the revenues for a July 1 to June 30 fiscal year are allocated September 1 through August 31. These are spendable in the fiscal year because your accounting staff “accrues” them back into your fiscal year.

California Local Streets and Roads Program - State Funds to Cities and Counties



Looking Ahead: Long Term Estimates of Local Streets and Roads Funding

With the recovery from the COVID-19 pandemic of 2020, we can expect stable, modest year over year growth in local streets and roads revenues in future years. While fuel consumption may remain flat or in slight decline, annual cost of living adjustments will help to maintain revenues.

Due to complicated statutory transfers from these revenues before the city and county allocations are made (including the \$1.3 billion transfer for state transportation debt service), actual growth in funding allocated to cities and counties varies somewhat among the various categories of local streets and roads allocations and will not exactly mirror total tax collections. Taking all these factors into account, for the purposes of long-term transportation program planning, we estimate transportation allocations to cities and counties will increase in outyears at the following growth rates:

Estimated Annual Revenue Growth Rate over prior year

	2025-26	2026-27	Beyond
HUTA 2103	2.4%	0.8%	1.1%
HUTA 2104	2.4%	0.8%	1.1%
HUTA 2105	2.4%	0.8%	1.1%
HUTA 2106	2.4%	0.8%	1.1%
HUTA 2107	2.4%	0.8%	1.1%
RMRA	2.4%	0.8%	1.1%

Your Mileage Revenues May Vary

Allocations to each particular city also will be affected by annual changes in the city's population relative to the change in state population in cities. The current forecast for California population, provided by the Demographics Unit of the California Department of Finance is as follows:⁶

California	<u>2022</u>	<u>2023</u>	<u>2024</u>	<u>2025</u>	<u>2026</u>	<u>2027</u>	<u>2028</u>	<u>2029</u>
Population	39,185,605	39,388,838	39,593,125	39,798,472	40,004,883	40,212,365	40,420,923	40,630,563
Population in Cities	32,713,003	32,892,492	33,072,965	33,254,428	33,436,888	33,620,348	33,804,815	33,990,294
percent change		0.55%	0.55%	0.55%	0.55%	0.55%	0.55%	0.55%

	<u>2030</u>	<u>2031</u>	<u>2032</u>	<u>2033</u>	<u>2034</u>	<u>2035</u>	<u>2036</u>
Population	40,825,471	41,011,197	41,197,768	41,385,188	41,573,460	41,762,589	41,952,578
Population in Cities	34,163,552	34,329,226	34,495,703	34,662,987	34,831,083	34,999,994	35,169,724
percent change	0.51%	0.48%	0.48%	0.48%	0.48%	0.48%	0.48%

If you think your city's population growth will be significantly different from the statewide average in cities, then you should adjust accordingly. For example, the City of Agatha's planning department estimates the city will see average annual residential population growth of 1.5 percent annually over the next ten years. The city's estimated HUTA 2105 allocation for FY2023-24 is \$381,200. The long term projection of Section 2105 revenue would be:

$$\$381,200 \times \text{Sec2105 growth} \times \text{Agatha Population Growth} \div \text{Statewide City Population Growth}$$

$$\text{So, for 2024-25, the city would estimate } \$381,200 \times 1.014 \times 1.015 \div 1.0055 = \$390,189$$

And long term ...

	<u>2023-24</u>	<u>2024-25</u>	<u>2025-26</u>	<u>2026-27</u>	<u>2027-28</u>	<u>2028-29</u>	<u>2029-30</u>
HUTA Sec2015	\$ 381,200						
2105 growth		1.4%	1.1%	0.6%	1.0%	1.0%	1.0%
Agatha pop		1.5%	1.5%	1.5%	1.5%	1.5%	1.5%
Cities pop		0.55%	0.55%	0.55%	0.55%	0.55%	0.55%
HUTA Sec2015	\$ 390,189	\$ 398,208	\$ 404,382	\$ 412,421	\$ 420,619	\$ 428,981	

Changes for allocations to counties will be affected by other factors in the allocation rules, including relative numbers of vehicle registrations, assessed values and maintained road miles.

mjgc

ATTACHMENTS:

- A) Local Streets and Roads - Projected Individual City Revenues – FY2023-24
- B) Local Streets and Roads - Projected Individual City Revenues – FY2024-25
- C) Local Streets and Roads - Projected Individual County Revenues – FY2023-24 (from CSAC)
- D) Local Streets and Roads - Projected Individual County Revenues – FY2024-25 (from CSAC)

⁶ See <http://www.dof.ca.gov/Forecasting/Demographics/projections/> California population in cities estimated by author based on recent historic trend of proportion of population in cities.

Local Streets and Roads - Projected FY2023-24 Revenues

Based on State Dept of Finance statewide revenue projections

Estimated January 2024

Estimated January 2024	Highway Users Tax Acct (HUTA) ⁽¹⁾ Streets & Highways Code					TOTAL	Road Mntnc	TOTAL
	Sec2103 ⁽⁵⁾	Sec2105 ⁽³⁾	Sec2106 ⁽³⁾	Sec2107 ⁽³⁾	Sec2107.5 ⁽⁴⁾	HUTA	Rehab Acct	
ALAMEDA COUNTY								
ALAMEDA	693,852	479,786	268,833	655,324	7,500	2,105,295	1,886,962	3,992,256
ALBANY	197,376	136,482	79,908	186,416	5,000	605,181	536,772	1,141,953
BERKELEY	1,116,651	772,144	429,723	1,054,646	10,000	3,383,163	3,036,784	6,419,947
DUBLIN	653,320	451,759	253,410	617,043	7,500	1,983,032	1,776,734	3,759,766
EMERYVILLE	111,708	77,244	47,309	105,505	3,000	344,766	303,796	648,562
FREMONT	2,024,139	1,399,655	775,052	1,911,743	10,000	6,120,588	5,504,737	11,625,325
HAYWARD	1,443,474	998,136	554,090	1,363,321	10,000	4,369,021	3,925,594	8,294,614
LIVERMORE	772,018	533,837	298,579	729,150	7,500	2,341,084	2,099,540	4,440,623
NEWARK	417,808	288,906	163,790	394,608	6,000	1,271,111	1,136,247	2,407,358
OAKLAND	3,813,205	2,636,761	1,455,850	3,601,466	10,000	11,517,282	10,370,185	21,887,467
PIEDMONT	99,119	68,539	42,518	93,615	3,000	306,792	269,559	576,351
PLEASANTON	702,004	485,423	271,936	663,023	7,500	2,129,885	1,909,132	4,039,017
SAN LEANDRO	799,820	553,061	309,158	755,408	7,500	2,424,947	2,175,147	4,600,094
UNION CITY	616,574	426,350	239,427	582,337	7,500	1,872,188	1,676,802	3,548,990
ALPINE COUNTY								
AMADOR COUNTY								
AMADOR	1,761	1,217	5,657	1,663	1,000	11,299	4,788	16,087
IONE	77,911	53,874	42,744	73,585	2,000	250,115	211,884	461,999
JACKSON	44,643	30,870	26,542	42,164	2,000	146,218	121,408	267,626
PLYMOUTH	9,411	6,508	9,383	8,888	1,000	35,190	25,594	60,784
SUTTER CREEK	23,268	16,089	16,132	21,976	1,000	78,465	63,278	141,742
BUTTE COUNTY								
BIGGS	17,519	12,114	12,177	16,546	1,000	59,357	47,644	107,000
CHICO	945,448	653,760	402,921	892,950	10,000	2,905,080	2,571,190	5,476,270
GRIDLEY	66,449	45,948	32,781	62,759	2,000	209,938	180,712	390,650
OROVILLE	175,464	121,330	78,686	165,720	4,000	545,200	477,181	1,022,381
PARADISE	80,482	55,652	38,690	108,429	2,000	285,253	218,875	504,128
CALAVERAS COUNTY								
ANGELS CAMP	32,142	22,225	28,545	30,357	1,000	114,270	87,411	201,681
COLUSA COUNTY								
COLUSA	56,589	39,130	20,372	53,447	2,000	171,539	153,897	325,436
WILLIAMS	49,018	33,895	18,289	46,296	2,000	149,499	133,307	282,806

Local Streets and Roads - Projected FY2023-24 Revenues

Based on State Dept of Finance statewide revenue projections

Estimated January 2024

Estimated January 2024	Highway Users Tax Acct (HUTA) ⁽¹⁾ Streets & Highways Code					TOTAL HUTA	Road Mntnc Rehab Acct	TOTAL
	Sec2103 ⁽⁵⁾	Sec2105 ⁽³⁾	Sec2106 ⁽³⁾	Sec2107 ⁽³⁾	Sec2107.5 ⁽⁴⁾			
CONTRA COSTA COUNTY								
ANTIOCH	1,016,299	702,752	421,738	959,867	10,000	3,110,656	2,763,873	5,874,529
BRENTWOOD	567,943	392,722	237,799	536,407	7,500	1,742,372	1,544,548	3,286,920
CLAYTON	97,402	67,352	44,759	91,994	3,000	304,508	264,890	569,398
CONCORD	1,105,365	764,340	458,277	1,043,987	10,000	3,381,968	3,006,090	6,388,059
DANVILLE	384,398	265,804	162,500	363,053	6,000	1,181,756	1,045,388	2,227,144
EL CERRITO	228,373	157,916	98,490	215,692	6,000	706,471	621,071	1,327,541
HERCULES	231,507	160,083	99,776	218,652	6,000	716,018	629,594	1,345,611
LAFAYETTE	223,813	154,762	96,619	211,385	6,000	692,579	608,669	1,301,248
MARTINEZ	330,459	228,506	140,371	312,109	6,000	1,017,445	898,698	1,916,143
MORAGA	152,055	105,143	67,181	143,612	4,000	471,990	413,520	885,511
OAKLEY	396,116	273,907	167,307	374,120	6,000	1,217,450	1,077,255	2,294,705
ORINDA	171,845	118,828	75,300	162,303	4,000	532,276	467,341	999,617
PINOLE	166,686	115,261	73,183	157,431	4,000	516,561	453,311	969,872
PITTSBURG	671,200	464,123	280,161	633,930	7,500	2,056,914	1,825,360	3,882,273
PLEASANT HILL	303,811	210,079	129,439	286,941	6,000	936,269	826,227	1,762,496
RICHMOND	1,020,279	705,504	423,370	963,625	10,000	3,122,778	2,774,694	5,897,472
SAN PABLO	283,510	196,042	121,110	267,767	6,000	874,428	771,017	1,645,445
SAN RAMON	744,736	514,971	310,329	703,383	7,500	2,280,919	2,025,344	4,306,264
WALNUT CREEK	618,916	427,969	258,711	584,549	7,500	1,897,645	1,683,170	3,580,815
DEL NORTE COUNTY								
CRESCENT CITY	59,406	41,078	24,907	56,108	2,000	183,500	161,558	345,058
EL DORADO COUNTY								
PLACERVILLE	95,175	65,812	66,766	89,890	3,000	320,643	258,833	579,477
SOUTH LAKE TAHOE	188,616	130,425	127,603	1,223,331	5,000	1,674,974	512,950	2,187,924

Local Streets and Roads - Projected FY2023-24 Revenues

Based on State Dept of Finance statewide revenue projections

Estimated January 2024

Estimated January 2024	Highway Users Tax Acct (HUTA) ⁽¹⁾ Streets & Highways Code					TOTAL HUTA	Road Mntnc Rehab Acct	TOTAL
	Sec2103 ⁽⁵⁾	Sec2105 ⁽³⁾	Sec2106 ⁽³⁾	Sec2107 ⁽³⁾	Sec2107.5 ⁽⁴⁾			
FRESNO COUNTY								
CLOVIS	1,096,244	758,033	384,193	1,035,373	10,000	3,283,843	2,981,287	6,265,129
COALINGA	159,054	109,983	59,846	150,222	4,000	483,104	432,554	915,658
FIREBAUGH	74,786	51,713	30,682	70,633	2,000	229,815	203,384	433,200
FOWLER	63,104	43,635	26,639	59,600	2,000	194,978	171,614	366,592
FRESNO	4,784,095	3,308,114	1,660,499	4,518,446	20,000	14,291,154	13,010,566	27,301,721
HURON	53,975	37,322	23,480	50,977	2,000	167,754	146,786	314,540
KERMAN	149,264	103,213	56,458	140,976	4,000	453,911	405,931	859,842
KINGSBURG	113,258	78,316	43,997	106,969	3,000	345,539	308,009	653,548
MENDOTA	110,810	76,623	43,150	104,657	3,000	338,240	301,354	639,594
ORANGE COVE	84,673	58,550	34,104	79,971	2,000	259,297	230,271	489,568
PARLIER	128,259	88,689	49,188	121,137	3,000	390,273	348,806	739,079
REEDLEY	223,443	154,507	82,130	211,036	6,000	677,115	607,663	1,284,778
SANGER	233,972	161,787	85,774	220,980	6,000	708,513	636,297	1,344,811
SAN JOAQUIN	32,564	22,518	16,070	30,756	1,000	102,908	88,560	191,468
SELMA	217,597	150,465	80,107	205,515	5,000	658,684	591,766	1,250,449
GLENN COUNTY								
ORLAND	72,647	50,234	27,013	68,613	2,000	220,507	197,567	418,073
WILLOWS	56,325	38,948	22,022	53,198	2,000	172,493	153,179	325,671
HUMBOLDT COUNTY								
ARCATA	164,521	113,763	80,945	155,385	4,000	518,614	447,422	966,036
BLUE LAKE	10,599	7,329	9,706	10,011	1,000	38,645	28,826	67,471
EUREKA	237,493	164,222	114,719	224,306	6,000	746,740	645,874	1,392,614
FERNDALE	12,263	8,480	10,476	11,582	1,000	43,801	33,351	77,152
FORTUNA	110,229	76,222	55,817	104,108	3,000	349,376	299,773	649,150
RIO DELL	29,818	20,618	18,600	28,162	1,000	98,198	81,090	179,289
TRINIDAD	2,703	1,869	6,051	2,553	1,000	14,175	7,350	21,525
IMPERIAL COUNTY								
BRAWLEY	242,441	167,643	104,878	228,979	6,000	749,941	659,329	1,409,270
CALEXICO	340,909	235,732	145,524	321,979	6,000	1,050,144	927,117	1,977,261
CALIPATRIA	58,200	40,244	28,825	54,969	2,000	184,238	158,278	342,516
EL CENTRO	394,593	272,854	167,685	372,682	6,000	1,213,813	1,073,113	2,286,926
HOLTVILLE	48,675	33,658	24,893	45,972	2,000	155,197	132,373	287,571
IMPERIAL	189,241	130,857	82,917	178,733	5,000	586,748	514,650	1,101,398
WESTMORLAND	17,783	12,297	12,141	16,796	1,000	60,016	48,362	108,379
INYO COUNTY								
BISHOP	34,087	23,571	19,381	32,195	1,000	110,234	92,702	202,936

Local Streets and Roads - Projected FY2023-24 Revenues

Based on State Dept of Finance statewide revenue projections

Estimated January 2024

Estimated January 2024	Highway Users Tax Acct (HUTA) ⁽¹⁾ Streets & Highways Code					TOTAL HUTA	Road Mntnc Rehab Acct	TOTAL
	Sec2103 ⁽⁵⁾	Sec2105 ⁽³⁾	Sec2106 ⁽³⁾	Sec2107 ⁽³⁾	Sec2107.5 ⁽⁴⁾			
KERN COUNTY								
ARVIN	173,861	120,222	52,328	164,207	4,000	514,619	472,824	987,442
BAKERSFIELD	3,595,132	2,485,968	987,599	3,395,503	10,000	10,474,201	9,777,126	20,251,327
CALIFORNIA CITY	132,176	91,398	40,933	124,837	4,000	393,344	359,460	752,804
DELANO	455,381	314,888	129,287	430,095	7,500	1,337,151	1,238,430	2,575,581
MARICOPA	9,024	6,240	7,267	8,523	1,000	32,053	24,540	56,593
MCFARLAND	124,817	86,308	38,921	117,886	3,000	370,932	339,445	710,377
RIDGECREST	245,487	169,750	71,909	231,856	6,000	725,001	667,613	1,392,614
SHAFTER	187,674	129,773	56,104	177,253	5,000	555,805	510,388	1,066,193
TAFT	76,564	52,943	25,730	72,313	2,000	229,551	208,221	437,771
TEHACHAPI	114,992	79,515	36,235	108,607	3,000	342,349	312,726	655,075
WASCO	238,717	165,068	70,058	225,462	6,000	705,305	649,202	1,354,507
KINGS COUNTY								
AVENAL	120,600	83,393	40,115	113,903	3,000	361,011	327,977	688,987
CORCORAN	190,386	131,648	60,550	179,814	5,000	567,398	517,762	1,085,160
HANFORD	518,467	358,511	156,622	489,678	7,500	1,530,778	1,409,996	2,940,774
LEMOORE	237,969	164,551	74,484	224,755	6,000	707,758	647,167	1,354,925
LAKE COUNTY								
CLEARLAKE	148,560	102,726	58,422	140,311	4,000	454,019	404,015	858,034
LAKEPORT	43,727	30,237	20,583	41,299	1,000	136,846	118,918	255,764
LASSEN COUNTY								
SUSANVILLE	141,825	98,070	47,745	216,537	4,000	508,176	385,700	893,876
LOS ANGELES COUNTY								
AGOURA HILLS	178,166	123,199	74,117	168,273	5,000	548,755	484,531	1,033,286
ALHAMBRA	727,314	502,924	287,766	686,928	7,500	2,212,432	1,977,964	4,190,396
ARCADIA	500,869	346,342	199,666	473,057	7,500	1,527,434	1,362,137	2,889,571
ARTESIA	145,153	100,371	61,273	137,093	4,000	447,889	394,750	842,639
AVALON	30,319	20,965	16,596	28,636	1,000	97,517	82,455	179,972
AZUSA	444,236	307,181	177,633	419,569	7,500	1,356,118	1,208,120	2,564,238
BALDWIN PARK	634,357	438,646	251,600	599,133	7,500	1,931,237	1,725,164	3,656,401
BELL	300,588	207,851	121,746	283,897	6,000	920,083	817,464	1,737,547
BELLFLOWER	694,424	480,181	274,970	655,864	7,500	2,112,939	1,888,518	4,001,457
BELL GARDENS	347,001	239,945	139,803	327,733	6,000	1,060,481	943,684	2,004,165
BEVERLY HILLS	287,955	199,116	116,831	271,966	6,000	881,868	783,108	1,664,975
BRADBURY	8,099	5,600	7,951	7,650	1,000	30,300	22,026	52,327
BURBANK	943,758	652,591	371,975	891,353	10,000	2,869,678	2,566,593	5,436,271
CALABASAS	204,524	141,425	84,371	193,167	5,000	628,487	556,213	1,184,700
CARSON	826,284	571,360	326,270	780,402	7,500	2,511,816	2,247,116	4,758,932
CERRITOS	434,684	300,576	173,916	410,547	6,000	1,325,724	1,182,143	2,507,867

Local Streets and Roads - Projected FY2023-24 Revenues

Based on State Dept of Finance statewide revenue projections

Estimated January 2024

	Highway Users Tax Acct (HUTA) ⁽¹⁾ Streets & Highways Code					TOTAL HUTA	Road Mntnc Rehab Acct	TOTAL
	Sec2103 ⁽⁵⁾	Sec2105 ⁽³⁾	Sec2106 ⁽³⁾	Sec2107 ⁽³⁾	Sec2107.5 ⁽⁴⁾			
CLAREMONT	329,675	227,964	133,062	311,369	6,000	1,008,071	896,567	1,904,638
COMMERCE	108,970	75,351	47,196	102,919	3,000	337,436	296,350	633,786
COMPTON	846,197	585,130	334,018	799,210	7,500	2,572,055	2,301,272	4,873,327
COVINA	451,754	312,380	180,558	426,669	7,500	1,378,861	1,228,566	2,607,427
CUDAHY	200,536	138,667	82,820	189,401	5,000	616,424	545,367	1,161,791
CULVER CITY	356,112	246,245	143,348	336,338	6,000	1,088,043	968,464	2,056,507
DIAMOND BAR	483,940	334,636	193,080	457,068	7,500	1,476,223	1,316,097	2,792,320
DOWNEY	1,003,173	693,676	395,090	947,469	10,000	3,049,409	2,728,176	5,777,585
DUARTE	200,686	138,770	82,878	189,542	5,000	616,876	545,774	1,162,650
EL MONTE	960,758	664,346	378,588	907,409	10,000	2,921,102	2,612,825	5,533,927
EL SEGUNDO	152,284	105,301	64,047	143,828	4,000	469,460	414,143	883,603
GARDENA	536,339	370,868	213,466	506,557	7,500	1,634,730	1,458,598	3,093,327
GLENDALE	1,725,100	1,192,875	675,960	1,629,309	10,000	5,233,243	4,691,487	9,924,730
GLENORA	462,239	319,630	184,637	436,572	7,500	1,410,578	1,257,081	2,667,659
HAWAIIAN GARDENS	122,810	84,921	52,580	115,990	3,000	379,300	333,986	713,286
HAWTHORNE	774,862	535,803	306,265	731,836	7,500	2,356,265	2,107,273	4,463,538
HERMOSA BEACH	173,571	120,021	72,329	163,933	4,000	533,853	472,034	1,005,887
HIDDEN HILLS	15,239	10,537	10,729	14,393	1,000	51,898	41,443	93,341
HUNTINGTON PARK	481,730	333,108	192,220	454,981	7,500	1,469,539	1,310,087	2,779,626
INDUSTRY	3,794	2,624	6,276	3,584	1,000	17,278	10,319	27,597
INGLEWOOD	955,573	660,761	376,571	902,512	10,000	2,905,416	2,598,723	5,504,139
IRVINDALE	13,214	9,137	9,941	12,480	1,000	45,773	35,936	81,709
LA CANADA FLINTRIDGE	180,887	125,080	75,175	170,842	5,000	556,984	491,929	1,048,913
LA HABRA HEIGHTS	49,793	34,431	24,172	47,028	2,000	157,424	135,414	292,838
LAKEWOOD	724,682	501,104	286,742	684,442	7,500	2,204,470	1,970,805	4,175,275
LA MIRADA	433,548	299,791	173,475	409,474	6,000	1,322,288	1,179,055	2,501,343
LANCASTER	1,553,818	1,074,436	609,322	1,467,538	10,000	4,715,114	4,225,678	8,940,792
LA PUENTE	334,702	231,440	135,018	316,117	6,000	1,023,277	910,238	1,933,515
LA VERNE	289,566	200,230	117,457	273,487	6,000	886,741	787,489	1,674,230
LAWNDALE	279,847	193,509	113,676	264,308	6,000	857,341	761,057	1,618,398
LOMITA	184,320	127,454	76,511	174,085	5,000	567,370	501,266	1,068,636
LONG BEACH	4,086,397	2,825,668	1,594,637	3,859,488	10,000	12,376,190	11,113,142	23,489,332
LOS ANGELES	34,299,308	23,717,342	13,349,147	32,394,746	20,000	103,780,542	93,278,537	197,059,079
LYNWOOD	603,703	417,450	239,674	570,181	7,500	1,838,509	1,641,799	3,480,308
MALIBU	94,541	65,374	41,582	89,292	3,000	293,788	257,109	550,898
MANHATTAN BEACH	312,280	215,936	126,294	294,939	6,000	955,449	849,258	1,804,707
MAYWOOD	221,277	153,009	90,889	208,990	6,000	680,166	601,774	1,281,939
MONROVIA	333,311	230,479	134,477	314,803	6,000	1,019,070	906,455	1,925,525
MONTEBELLO	551,754	381,528	219,463	521,116	7,500	1,681,360	1,500,519	3,181,880

Local Streets and Roads - Projected FY2023-24 Revenues

Based on State Dept of Finance statewide revenue projections

Estimated January 2024

	Highway Users Tax Acct (HUTA) ⁽¹⁾ Streets & Highways Code					TOTAL HUTA	Road Mntnc Rehab Acct	TOTAL
	Sec2103 ⁽⁵⁾	Sec2105 ⁽³⁾	Sec2106 ⁽³⁾	Sec2107 ⁽³⁾	Sec2107.5 ⁽⁴⁾			
MONTEREY PARK	537,518	371,684	213,925	507,671	7,500	1,638,298	1,461,806	3,100,104
NORWALK	910,428	629,544	359,007	859,874	10,000	2,768,853	2,475,950	5,244,804
PALMDALE	1,490,705	1,030,795	584,768	1,407,930	10,000	4,524,197	4,054,041	8,578,238
PALOS VERDES ESTATES	117,571	81,298	50,542	111,043	3,000	363,455	319,741	683,195
PARAMOUNT	470,840	325,577	187,983	444,696	7,500	1,436,596	1,280,472	2,717,068
PASADENA	1,230,631	850,958	483,584	1,162,297	10,000	3,737,470	3,346,756	7,084,226
PICO RIVERA	547,141	378,338	217,668	516,759	7,500	1,667,406	1,487,974	3,155,380
POMONA	1,340,332	926,815	526,264	1,265,906	10,000	4,069,316	3,645,093	7,714,410
RANCHO PALOS VERDES	372,637	257,671	149,776	351,945	6,000	1,138,030	1,013,402	2,151,432
REDONDO BEACH	618,379	427,598	245,384	584,042	7,500	1,882,902	1,681,710	3,564,612
ROLLING HILLS ⁽²⁾								
ROLLING HILLS ESTATES	74,355	51,415	33,728	70,226	2,000	231,724	202,211	433,935
ROSEMEAD	450,046	311,199	179,893	425,056	7,500	1,373,694	1,223,921	2,597,616
SAN DIMAS	307,614	212,709	124,479	290,533	6,000	941,334	836,569	1,777,904
SAN FERNANDO	208,186	143,957	85,796	196,626	5,000	639,566	566,172	1,205,738
SAN GABRIEL	347,414	240,231	139,964	328,123	6,000	1,061,732	944,810	2,006,542
SAN MARINO	110,493	76,404	47,788	104,358	3,000	342,043	300,492	642,535
SANTA CLARITA	2,030,618	1,404,135	794,824	1,917,862	10,000	6,157,439	5,522,359	11,679,798
SANTA FE SPRINGS	164,538	113,775	68,815	155,402	4,000	506,530	447,470	954,000
SANTA MONICA	821,644	568,152	324,465	776,020	7,500	2,497,781	2,234,499	4,732,280
SIERRA MADRE	98,415	68,052	43,089	92,950	3,000	305,506	267,644	573,150
SIGNAL HILL	103,556	71,607	45,089	97,806	3,000	321,058	281,626	602,684
SOUTH EL MONTE	172,030	118,956	71,729	162,478	4,000	529,193	467,844	997,037
SOUTH GATE	815,455	563,872	322,058	770,175	7,500	2,479,060	2,217,668	4,696,728
SOUTH PASADENA	237,379	164,143	97,154	224,198	6,000	728,874	645,563	1,374,436
TEMPLE CITY	321,602	222,382	129,921	303,745	6,000	983,651	874,613	1,858,263
TORRANCE	1,292,916	894,027	507,816	1,221,123	10,000	3,925,883	3,516,143	7,442,026
VERNON	1,858	1,284	5,523	1,754	1,000	11,419	5,052	16,471
WALNUT	250,355	173,116	102,202	236,454	6,000	768,127	680,853	1,448,980
WEST COVINA	964,931	667,232	380,212	911,350	10,000	2,933,725	2,624,173	5,557,898
WEST HOLLYWOOD	314,260	217,305	127,065	296,810	6,000	961,441	854,645	1,816,086
WESTLAKE VILLAGE	71,723	49,595	32,704	67,740	2,000	223,761	195,053	418,814
WHITTIER	773,990	535,200	305,926	731,013	7,500	2,353,629	2,104,903	4,458,531

Local Streets and Roads - Projected FY2023-24 Revenues

Based on State Dept of Finance statewide revenue projections

Estimated January 2024

Estimated January 2024	Highway Users Tax Acct (HUTA) ⁽¹⁾ Streets & Highways Code					TOTAL HUTA	Road Mntnc Rehab Acct	TOTAL
	Sec2103 ⁽⁵⁾	Sec2105 ⁽³⁾	Sec2106 ⁽³⁾	Sec2107 ⁽³⁾	Sec2107.5 ⁽⁴⁾			
MADERA COUNTY								
CHOWCHILLA	169,856	117,452	47,065	160,424	4,000	498,797	461,930	960,727
MADERA	578,094	399,741	148,647	545,994	7,500	1,679,976	1,572,153	3,252,129
MARIN COUNTY								
BELVEDERE	18,690	12,924	12,857	17,652	1,000	63,123	50,828	113,951
CORTE MADERA	89,752	62,062	43,493	84,768	3,000	283,076	244,085	527,161
FAIRFAX	66,819	46,204	33,606	63,109	2,000	211,738	181,717	393,455
LARKSPUR	115,080	79,576	54,412	108,690	3,000	360,758	312,965	673,723
MILL VALLEY	124,315	85,961	58,394	117,412	3,000	389,082	338,080	727,162
NOVATO	467,821	323,489	206,483	441,844	7,500	1,447,137	1,272,260	2,719,396
ROSS	20,556	14,214	13,662	19,415	1,000	68,847	55,904	124,751
SAN ANSELMO	112,474	77,774	53,289	106,229	3,000	352,766	305,879	658,644
SAN RAFAEL	541,436	374,393	238,219	511,371	7,500	1,672,920	1,472,460	3,145,379
SAUSALITO	62,628	43,306	31,800	59,151	2,000	198,886	170,321	369,207
TIBURON	80,350	55,561	39,440	75,888	2,000	253,239	218,515	471,754
MARIPOSA COUNTY								
MENDOCINO COUNTY								
FORT BRAGG	62,179	42,996	31,767	58,727	2,000	197,670	169,100	366,770
POINT ARENA	4,050	2,800	6,556	3,825	1,000	18,231	11,013	29,244
UKIAH	146,174	101,077	68,196	138,057	4,000	457,505	397,527	855,032
WILLITS	43,551	30,115	23,688	41,133	1,000	139,487	118,439	257,927
MERCED COUNTY								
ATWATER	279,522	193,284	90,741	264,000	6,000	833,547	760,172	1,593,718
DOS PALOS	51,008	35,271	20,483	48,175	2,000	156,937	138,718	295,655
GUSTINE	53,508	37,000	21,251	50,537	2,000	164,296	145,517	309,813
LIVINGSTON	125,512	86,789	43,390	118,543	3,000	377,234	341,336	718,570
LOS BANOS	416,822	288,225	132,955	393,677	6,000	1,237,678	1,133,566	2,371,243
MERCED	793,341	548,581	248,719	749,288	7,500	2,347,428	2,157,526	4,504,955
MODOC COUNTY								
ALTURAS	23,884	16,515	15,354	24,039	1,000	80,792	64,954	145,746
MONO COUNTY								
MAMMOTH LAKES	64,028	44,274	61,284	1,912,491	2,000	2,084,077	174,128	2,258,205

Local Streets and Roads - Projected FY2023-24 Revenues

Based on State Dept of Finance statewide revenue projections

Estimated January 2024

Estimated January 2024	Highway Users Tax Acct (HUTA) ⁽¹⁾ Streets & Highways Code					TOTAL HUTA	Road Mntnc Rehab Acct	TOTAL
	Sec2103 ⁽⁵⁾	Sec2105 ⁽³⁾	Sec2106 ⁽³⁾	Sec2107 ⁽³⁾	Sec2107.5 ⁽⁴⁾			
MONTEREY COUNTY								
CARMEL-BY-THE-SEA	27,846	19,255	13,019	26,299	1,000	87,419	75,727	163,147
DEL REY OAKS	13,883	9,600	8,898	13,112	1,000	46,494	37,756	84,250
GONZALES	75,147	51,963	26,982	70,974	2,000	227,066	204,366	431,432
GREENFIELD	175,340	121,245	56,557	165,604	4,000	522,746	476,846	999,592
KING CITY	121,639	84,111	40,705	114,884	3,000	364,339	330,802	695,141
MARINA	194,277	134,339	62,147	183,489	5,000	579,251	528,344	1,107,596
MONTEREY	250,549	173,250	78,757	236,637	6,000	745,193	681,380	1,426,572
PACIFIC GROVE	131,710	91,075	43,678	124,396	3,000	393,859	358,191	752,050
SALINAS	1,422,451	983,599	424,679	1,343,466	10,000	4,184,195	3,868,421	8,052,616
SAND CITY	3,310	2,289	5,777	3,126	1,000	15,502	9,002	24,505
SEASIDE	287,947	199,110	89,796	271,958	6,000	854,810	783,084	1,637,893
SOLEDAD	242,996	168,027	76,527	229,503	6,000	723,053	660,838	1,383,890
NAPA COUNTY								
AMERICAN CANYON	189,664	131,149	65,935	179,132	5,000	570,880	515,799	1,086,679
CALISTOGA	45,937	31,765	19,607	43,386	2,000	142,695	124,928	267,622
NAPA	683,332	472,511	225,060	645,388	7,500	2,033,791	1,858,351	3,892,142
SAINT HELENA	48,015	33,201	20,277	45,348	2,000	148,841	130,578	279,419
YOUNTVILLE	26,314	18,196	13,282	24,853	1,000	83,644	71,562	155,205
NEVADA COUNTY								
GRASS VALLEY	119,878	82,893	109,332	113,221	3,000	428,324	326,014	754,338
NEVADA CITY	29,483	20,387	30,509	27,846	1,000	109,225	80,181	189,405
TRUCKEE	147,688	102,124	133,582	1,749,411	4,000	2,136,804	401,645	2,538,450

Local Streets and Roads - Projected FY2023-24 Revenues

Based on State Dept of Finance statewide revenue projections

Estimated January 2024

Estimated January 2024	Highway Users Tax Acct (HUTA) ⁽¹⁾ Streets & Highways Code					TOTAL	Road Mntnc	TOTAL
	Sec2103 ⁽⁵⁾	Sec2105 ⁽³⁾	Sec2106 ⁽³⁾	Sec2107 ⁽³⁾	Sec2107.5 ⁽⁴⁾	HUTA	Rehab Acct	
ORANGE COUNTY								
ALISO VIEJO	456,446	315,624	203,844	431,101	7,500	1,414,516	1,241,327	2,655,843
ANAHEIM	3,044,849	2,105,457	1,332,580	2,875,775	10,000	9,368,660	8,280,605	17,649,265
BREA	424,190	293,320	189,778	400,636	6,000	1,313,924	1,153,605	2,467,529
BUENA PARK	741,831	512,963	328,293	700,639	7,500	2,291,226	2,017,444	4,308,670
COSTA MESA	990,329	684,794	436,657	935,338	10,000	3,057,118	2,693,245	5,750,363
CYPRESS	443,611	306,749	198,247	418,978	7,500	1,375,085	1,206,420	2,581,505
DANA POINT	291,943	201,873	132,109	275,732	6,000	907,658	793,953	1,701,611
FOUNTAIN VALLEY	503,264	347,998	224,260	475,319	7,500	1,558,340	1,368,649	2,926,989
FULLERTON	1,271,083	878,931	559,086	1,200,503	10,000	3,919,602	3,456,768	7,376,371
GARDEN GROVE	1,514,616	1,047,329	665,285	1,430,512	10,000	4,667,741	4,119,066	8,786,808
HUNTINGTON BEACH	1,747,197	1,208,154	766,707	1,650,179	10,000	5,382,237	4,751,581	10,133,818
IRVINE	2,709,513	1,873,578	1,186,348	2,559,060	10,000	8,338,499	7,368,643	15,707,142
LAGUNA BEACH	202,517	140,037	93,112	191,272	5,000	631,937	550,754	1,182,691
LAGUNA HILLS	276,352	191,092	125,310	261,007	6,000	859,762	751,553	1,611,314
LAGUNA NIGUEL	569,607	393,873	253,191	537,978	7,500	1,762,150	1,549,073	3,311,223
LAGUNA WOODS	156,325	108,096	72,969	147,644	4,000	489,034	425,132	914,166
LA HABRA	552,696	382,179	245,816	522,006	7,500	1,710,197	1,503,081	3,213,278
LAKE FOREST	767,027	530,385	339,281	724,436	7,500	2,368,628	2,085,965	4,454,593
LA PALMA	137,195	94,867	64,627	129,576	4,000	430,265	373,107	803,372
LOS ALAMITOS	106,778	73,835	51,363	100,849	3,000	335,826	290,388	626,214
MISSION VIEJO	824,584	570,185	364,380	778,797	7,500	2,545,447	2,242,495	4,787,942
NEWPORT BEACH	749,675	518,387	331,714	708,047	7,500	2,315,323	2,038,776	4,354,099
ORANGE	1,228,932	849,784	540,705	1,160,692	10,000	3,790,112	3,342,136	7,132,248
PLACENTIA	462,248	319,636	206,374	436,580	7,500	1,432,339	1,257,105	2,689,443
RANCHO SANTA MARGARITA	422,121	291,889	188,876	398,682	6,000	1,307,569	1,147,978	2,455,547
SAN CLEMENTE	564,730	390,501	251,064	533,372	7,500	1,747,167	1,535,809	3,282,976
SAN JUAN CAPISTRANO	308,908	213,604	139,507	291,755	6,000	959,773	840,089	1,799,862
SANTA ANA	2,732,710	1,889,619	1,196,464	2,580,969	10,000	8,409,761	7,431,730	15,841,491
SEAL BEACH	222,219	153,660	101,704	209,880	6,000	693,464	604,335	1,297,799
STANTON	344,078	237,924	154,843	324,972	6,000	1,067,817	935,736	2,003,553
TUSTIN	707,797	489,428	313,452	668,494	7,500	2,186,671	1,924,885	4,111,556
VILLA PARK	51,615	35,691	27,308	48,749	2,000	165,363	140,370	305,733
WESTMINSTER	801,105	553,950	354,141	756,622	7,500	2,473,318	2,178,643	4,651,961
YORBA LINDA	599,478	414,528	266,217	566,190	7,500	1,853,912	1,630,307	3,484,219

Local Streets and Roads - Projected FY2023-24 Revenues

Based on State Dept of Finance statewide revenue projections

Estimated January 2024

Estimated January 2024	Highway Users Tax Acct (HUTA) ⁽¹⁾ Streets & Highways Code					TOTAL HUTA	Road Mntnc Rehab Acct	TOTAL
	Sec2103 ⁽⁵⁾	Sec2105 ⁽³⁾	Sec2106 ⁽³⁾	Sec2107 ⁽³⁾	Sec2107.5 ⁽⁴⁾			
PLACER COUNTY								
AUBURN	121,322	83,892	58,025	114,585	3,000	380,823	329,940	710,763
COLFAX	17,748	12,272	12,586	16,762	1,000	60,369	48,266	108,635
LINCOLN	460,540	318,455	206,843	434,967	7,500	1,428,305	1,252,460	2,680,765
LOOMIS	59,987	41,480	31,117	56,656	2,000	191,241	163,138	354,379
ROCKLIN	627,605	433,977	280,135	592,756	7,500	1,941,974	1,706,801	3,648,774
ROSEVILLE	1,346,309	930,948	595,437	1,271,552	10,000	4,154,246	3,661,350	7,815,596
PLUMAS COUNTY								
PORTOLA	18,487	12,784	8,837	131,011	1,000	172,120	50,277	222,397
RIVERSIDE COUNTY								
BANNING	275,111	190,234	123,264	259,835	6,000	854,444	748,177	1,602,621
BEAUMONT	498,193	344,491	219,325	470,529	7,500	1,540,038	1,354,858	2,894,897
BLYTHE	163,623	113,142	75,257	154,537	4,000	510,559	444,980	955,539
CALIMESA	96,505	66,731	46,355	91,146	3,000	303,737	262,448	566,185
CANYON LAKE	97,446	67,382	46,761	92,036	3,000	306,625	265,010	571,636
CATHEDRAL CITY	452,793	313,098	199,775	427,650	7,500	1,400,817	1,231,391	2,632,208
COACHELLA	373,816	258,487	165,767	353,059	6,000	1,157,130	1,016,611	2,173,741
CORONA	1,382,201	955,767	599,984	1,305,451	10,000	4,253,403	3,758,960	8,012,363
DESERT HOT SPRINGS	287,066	198,501	128,412	271,126	6,000	891,106	780,690	1,671,795
EASTVALE	613,977	424,554	269,182	579,884	7,500	1,895,098	1,669,739	3,564,837
HEMET	791,598	547,375	345,667	747,642	7,500	2,439,781	2,152,786	4,592,567
INDIAN WELLS	42,028	29,062	22,898	39,694	1,000	134,682	114,297	248,979
INDIO	799,688	552,970	349,150	755,283	7,500	2,464,591	2,174,788	4,639,379
JURUPA VALLEY	924,223	639,083	402,776	872,903	10,000	2,848,985	2,513,467	5,362,452
LAKE ELSINORE	633,618	438,135	277,640	598,435	7,500	1,955,327	1,723,153	3,678,480
LA QUINTA	334,350	231,197	148,773	315,784	6,000	1,036,104	909,280	1,945,384
MENIFEE	968,690	669,831	421,923	914,901	10,000	2,985,345	2,634,396	5,619,741
MORENO VALLEY	1,833,683	1,267,958	794,394	1,731,862	10,000	5,637,897	4,986,784	10,624,681
MURRIETA	974,571	673,898	424,456	920,455	10,000	3,003,379	2,650,389	5,653,768
NORCO	234,694	162,286	105,861	221,662	6,000	730,503	638,261	1,368,763
PALM DESERT	446,305	308,612	196,981	421,522	7,500	1,380,920	1,213,746	2,594,666
PALM SPRINGS	389,170	269,104	172,379	367,560	6,000	1,204,212	1,058,365	2,262,577
PERRIS	695,023	480,595	304,081	656,430	7,500	2,143,628	1,890,146	4,033,774
RANCHO MIRAGE	149,766	103,560	69,290	141,450	4,000	468,066	407,295	875,362
RIVERSIDE	2,784,624	1,925,517	1,203,875	2,630,001	10,000	8,554,017	7,572,914	16,126,931
SAN JACINTO	476,298	329,352	209,897	449,851	7,500	1,472,898	1,295,315	2,768,213
TEMECULA	966,806	668,528	421,112	913,121	10,000	2,979,568	2,629,273	5,608,841
WILDOMAR	323,266	223,533	144,000	305,316	6,000	1,002,116	879,138	1,881,253

Local Streets and Roads - Projected FY2023-24 Revenues

Based on State Dept of Finance statewide revenue projections

Estimated January 2024

Estimated January 2024	Highway Users Tax Acct (HUTA) ⁽¹⁾ Streets & Highways Code					TOTAL HUTA	Road Mntnc Rehab Acct	TOTAL
	Sec2103 ⁽⁵⁾	Sec2105 ⁽³⁾	Sec2106 ⁽³⁾	Sec2107 ⁽³⁾	Sec2107.5 ⁽⁴⁾			
SACRAMENTO COUNTY								
CITRUS HEIGHTS	772,203	533,964	351,382	729,325	7,500	2,394,375	2,100,042	4,494,417
ELK GROVE	1,558,272	1,077,517	704,188	1,471,745	10,000	4,821,722	4,237,793	9,059,515
FOLSOM	752,686	520,468	342,622	710,891	7,500	2,334,168	2,046,964	4,381,131
GALT	224,992	155,578	105,782	212,499	6,000	704,851	611,877	1,316,728
ISLETON	6,999	4,840	7,941	6,610	1,000	27,390	19,034	46,423
RANCHO CORDOVA	714,118	493,799	325,312	674,464	7,500	2,215,193	1,942,075	4,157,268
SACRAMENTO	4,580,170	3,167,103	2,060,483	4,325,844	20,000	14,153,600	12,455,982	26,609,582
SAN BENITO COUNTY								
HOLLISTER	377,593	261,099	158,256	356,626	6,000	1,159,574	1,026,882	2,186,456
SAN JUAN BAUTISTA	18,347	12,686	12,256	17,328	1,000	61,617	49,894	111,511
SAN BERNARDINO COUNTY								
ADELANTO	322,756	223,180	139,810	304,834	6,000	996,579	877,749	1,874,328
APPLE VALLEY	669,140	462,698	284,703	631,984	7,500	2,056,026	1,819,757	3,875,783
BARSTOW	224,781	155,432	98,826	212,299	6,000	697,339	611,302	1,308,641
BIG BEAR LAKE	44,432	30,724	23,386	417,490	2,000	518,031	120,834	638,865
CHINO	819,936	566,971	347,781	774,407	7,500	2,516,596	2,229,854	4,746,450
CHINO HILLS	690,832	477,698	293,777	652,472	7,500	2,122,279	1,878,750	4,001,028
COLTON	473,825	327,641	203,002	447,514	7,500	1,459,482	1,288,588	2,748,070
FONTANA	1,882,648	1,301,816	792,316	1,778,109	10,000	5,764,890	5,119,947	10,884,837
GRAND TERRACE	115,696	80,002	53,196	109,272	3,000	361,166	314,641	675,807
HESPERIA	880,716	608,999	373,206	831,812	10,000	2,704,732	2,395,147	5,099,880
HIGHLAND	501,221	346,585	214,462	473,390	7,500	1,543,158	1,363,094	2,906,253
LOMA LINDA	222,096	153,575	97,703	209,763	6,000	689,138	604,000	1,293,138
MONTCLAIR	335,090	231,708	144,969	316,483	6,000	1,034,249	911,291	1,945,541
NEEDLES	43,402	30,011	22,955	40,992	1,000	138,359	118,032	256,392
ONTARIO	1,590,951	1,100,113	670,299	1,502,609	10,000	4,873,973	4,326,664	9,200,637
RANCHO CUCAMONGA	1,535,867	1,062,024	647,257	1,450,584	10,000	4,705,733	4,176,861	8,882,594
REDLANDS	641,453	443,553	273,121	605,835	7,500	1,971,462	1,744,461	3,715,923
RIALTO	916,793	633,945	388,297	865,885	10,000	2,814,921	2,493,260	5,308,181
SAN BERNARDINO	1,967,109	1,360,220	827,647	1,857,880	10,000	6,022,856	5,349,643	11,372,499
TWENTYNINE PALMS	231,762	160,259	101,747	218,893	6,000	718,661	630,288	1,348,949
UPLAND	695,111	480,656	295,567	656,513	7,500	2,135,346	1,890,385	4,025,732
VICTORVILLE	1,207,785	835,161	510,020	1,140,720	10,000	3,703,686	3,284,628	6,988,314
YUCAIPA	482,170	333,412	206,493	455,397	7,500	1,484,972	1,311,285	2,796,257
YUCCA VALLEY	191,856	132,665	85,054	181,202	5,000	595,777	521,761	1,117,537

Local Streets and Roads - Projected FY2023-24 Revenues

Based on State Dept of Finance statewide revenue projections

Estimated January 2024

Estimated January 2024	Highway Users Tax Acct (HUTA) ⁽¹⁾ Streets & Highways Code					TOTAL HUTA	Road Mntnc Rehab Acct	TOTAL
	Sec2103 ⁽⁵⁾	Sec2105 ⁽³⁾	Sec2106 ⁽³⁾	Sec2107 ⁽³⁾	Sec2107.5 ⁽⁴⁾			
SAN DIEGO COUNTY								
CARLSBAD	1,009,838	698,284	463,403	953,764	10,000	3,135,288	2,746,300	5,881,588
CHULA VISTA	2,419,075	1,672,746	1,103,387	2,284,749	10,000	7,489,956	6,578,784	14,068,741
CORONADO	207,570	143,531	99,065	196,044	5,000	651,210	564,496	1,215,706
DEL MAR	34,695	23,991	20,556	32,768	1,000	113,010	94,354	207,364
EL CAJON	934,682	646,315	429,272	882,781	10,000	2,903,050	2,541,910	5,444,959
ENCINITAS	540,063	373,443	250,061	510,074	7,500	1,681,142	1,468,725	3,149,866
ESCONDIDO	1,328,112	918,365	607,943	1,254,365	10,000	4,118,786	3,611,862	7,730,648
IMPERIAL BEACH	233,364	161,367	110,779	220,406	6,000	731,917	634,645	1,366,563
LA MESA	532,447	368,178	246,603	502,882	7,500	1,657,610	1,448,015	3,105,626
LEMON GROVE	241,393	166,919	114,425	227,989	6,000	756,727	656,480	1,413,207
NATIONAL CITY	539,922	373,346	249,997	509,941	7,500	1,680,706	1,468,342	3,149,048
OCEANSIDE	1,521,526	1,052,108	695,779	1,437,039	10,000	4,716,452	4,137,860	8,854,312
POWAY	428,337	296,187	199,323	404,552	6,000	1,334,399	1,164,881	2,499,280
SAN DIEGO	12,152,843	8,403,468	5,523,834	11,478,023	20,000	37,578,168	33,050,212	70,628,380
SAN MARCOS	832,200	575,451	382,731	785,989	7,500	2,583,871	2,263,205	4,847,076
SANTEE	522,403	361,232	242,041	493,395	7,500	1,626,571	1,420,698	3,047,269
SOLANA BEACH	113,539	78,510	56,362	107,235	3,000	358,647	308,776	667,422
VISTA	878,902	607,745	403,941	830,099	7,500	2,728,187	2,390,215	5,118,402
SAN FRANCISCO COUNTY								
SAN FRANCISCO	7,693,994	5,320,256	1,988,423	7,266,765	20,000	22,289,438	20,924,170	43,213,608
SAN JOAQUIN COUNTY								
ESCALON	65,490	45,285	31,226	61,853	2,000	205,854	178,102	383,956
LATHROP	308,829	213,549	129,417	291,680	6,000	949,475	839,873	1,789,348
LODI	583,614	403,558	240,297	551,207	7,500	1,786,176	1,587,164	3,373,340
MANTECA	781,782	540,588	320,261	738,371	7,500	2,388,501	2,126,091	4,514,592
RIPON	140,654	97,260	61,556	132,844	4,000	436,314	382,516	818,830
STOCKTON	2,847,561	1,969,036	1,153,834	2,689,442	10,000	8,669,874	7,744,072	16,413,946
TRACY	841,751	582,056	344,460	795,011	7,500	2,570,778	2,289,181	4,859,959
SAN LUIS OBISPO COUNTY								
ARROYO GRANDE	161,413	111,614	85,061	152,450	4,000	514,538	438,970	953,508
ATASCADERO	270,982	187,379	139,543	255,935	6,000	859,839	736,948	1,596,787
EL PASO DE ROBLES	276,097	190,916	142,086	260,766	6,000	875,865	750,858	1,626,723
GROVER BEACH	112,289	77,646	60,634	106,054	3,000	359,624	305,376	665,000
MORRO BAY	92,877	64,223	50,982	87,720	3,000	298,803	252,584	551,387
PISMO BEACH	70,851	48,992	40,030	66,917	2,000	228,790	192,682	421,472
SAN LUIS OBISPO	420,704	290,909	213,990	397,343	6,000	1,328,946	1,144,124	2,473,070

Local Streets and Roads - Projected FY2023-24 Revenues

Based on State Dept of Finance statewide revenue projections

Estimated January 2024

Estimated January 2024	Highway Users Tax Acct (HUTA) ⁽¹⁾ Streets & Highways Code					TOTAL HUTA	Road Mntnc Rehab Acct	TOTAL
	Sec2103 ⁽⁵⁾	Sec2105 ⁽³⁾	Sec2106 ⁽³⁾	Sec2107 ⁽³⁾	Sec2107.5 ⁽⁴⁾			
SAN MATEO COUNTY								
ATHERTON	61,458	42,497	31,492	58,045	2,000	195,492	167,137	362,629
BELMONT	247,600	171,211	112,338	233,851	6,000	771,000	673,359	1,444,359
BRISBANE	42,724	29,543	23,356	40,351	1,000	136,973	116,189	253,162
BURLINGAME	275,137	190,252	124,299	259,860	6,000	855,548	748,249	1,603,796
COLMA	12,827	8,869	10,371	12,115	1,000	45,182	34,883	80,065
DALY CITY	923,202	638,377	405,768	871,939	10,000	2,849,286	2,510,690	5,359,975
EAST PALO ALTO	264,485	182,887	119,672	249,799	6,000	822,842	719,279	1,542,122
FOSTER CITY	296,653	205,130	133,643	280,181	6,000	921,608	806,762	1,728,370
HALF MOON BAY	103,486	71,558	49,746	97,739	3,000	325,530	281,434	606,964
HILLSBOROUGH	100,158	69,257	48,301	94,596	3,000	315,313	272,384	587,697
MENLO PARK	300,703	207,931	135,402	284,006	6,000	934,041	817,775	1,751,816
MILLBRAE	205,369	142,009	93,997	193,966	5,000	640,340	558,511	1,198,851
PACIFICA	340,539	235,476	152,704	321,630	6,000	1,056,349	926,111	1,982,460
PORTOLA VALLEY	39,079	27,022	21,773	36,909	1,000	125,783	106,277	232,060
REDWOOD CITY	734,929	508,190	323,997	694,120	7,500	2,268,736	1,998,673	4,267,410
SAN BRUNO	387,488	267,941	173,095	365,972	6,000	1,200,496	1,053,792	2,254,288
SAN CARLOS	270,692	187,178	122,368	255,661	6,000	841,898	736,158	1,578,056
SAN MATEO	930,984	643,758	409,148	879,289	10,000	2,873,180	2,531,854	5,405,034
SOUTH SAN FRANCISCO	583,490	403,473	258,223	551,091	7,500	1,803,777	1,586,829	3,390,607
WOODSIDE	46,738	32,319	25,099	44,143	2,000	150,299	127,106	277,405
SANTA BARBARA COUNTY								
BUELLTON	45,338	31,351	20,701	42,821	2,000	142,211	123,300	265,511
CARPINTERIA	115,811	80,081	45,418	109,380	3,000	353,690	314,952	668,642
GOLETA	287,832	199,031	105,751	271,849	6,000	870,463	782,772	1,653,236
GUADALUPE	74,962	51,835	31,091	70,800	2,000	230,688	203,863	434,552
LOMPOC	390,825	270,248	141,874	369,123	6,000	1,178,070	1,062,866	2,240,936
SANTA BARBARA	770,099	532,510	274,897	727,337	7,500	2,312,343	2,094,320	4,406,664
SANTA MARIA	965,397	667,554	343,394	911,791	10,000	2,898,136	2,625,442	5,523,578
SOLVANG	51,237	35,429	22,770	48,392	2,000	159,828	139,340	299,168

Local Streets and Roads - Projected FY2023-24 Revenues

Based on State Dept of Finance statewide revenue projections

Estimated January 2024

Estimated January 2024	Highway Users Tax Acct (HUTA) ⁽¹⁾ Streets & Highways Code					TOTAL HUTA	Road Mntnc Rehab Acct	TOTAL
	Sec2103 ⁽⁵⁾	Sec2105 ⁽³⁾	Sec2106 ⁽³⁾	Sec2107 ⁽³⁾	Sec2107.5 ⁽⁴⁾			
SANTA CLARA COUNTY								
CAMPBELL	386,353	267,156	161,202	364,899	6,000	1,185,609	1,050,704	2,236,313
CUPERTINO	533,117	368,640	220,614	503,514	7,500	1,633,385	1,449,835	3,083,220
GILROY	528,900	365,724	218,907	499,531	7,500	1,620,562	1,438,367	3,058,929
LOS ALTOS	278,782	192,773	117,655	263,302	6,000	858,512	758,160	1,616,672
LOS ALTOS HILLS	74,857	51,762	35,103	70,700	2,000	234,422	203,576	437,998
LOS GATOS	295,500	204,333	124,423	279,092	6,000	909,347	803,626	1,712,973
MILPITAS	722,014	499,260	297,083	681,923	7,500	2,207,780	1,963,551	4,171,331
MONTE SERENO	30,980	21,422	17,341	29,259	1,000	100,002	84,251	184,253
MORGAN HILL	404,013	279,367	168,351	381,579	6,000	1,239,309	1,098,730	2,338,040
MOUNTAIN VIEW	735,986	508,921	302,739	695,118	7,500	2,250,263	2,001,546	4,251,809
PALO ALTO	603,043	416,993	248,922	569,558	7,500	1,846,016	1,640,003	3,486,019
SAN JOSE	8,942,875	6,183,834	3,625,020	8,446,298	20,000	27,218,026	24,320,557	51,538,583
SANTA CLARA	1,166,259	806,447	476,920	1,101,499	10,000	3,561,126	3,171,695	6,732,820
SARATOGA	274,706	189,954	116,005	259,452	6,000	846,118	747,075	1,593,193
SUNNYVALE	1,376,144	951,579	561,885	1,299,730	10,000	4,199,339	3,742,488	7,941,827
SANTA CRUZ COUNTY								
CAPITOLA	86,741	59,980	37,732	81,925	2,000	268,378	235,897	504,275
SANTA CRUZ	569,863	394,050	221,151	538,219	7,500	1,730,783	1,549,767	3,280,550
SCOTTS VALLEY	108,178	74,803	45,870	102,171	3,000	334,023	294,195	628,218
WATSONVILLE	455,813	315,186	177,852	430,502	7,500	1,386,853	1,239,603	2,626,456
SHASTA COUNTY								
ANDERSON	98,283	67,961	56,201	92,825	3,000	318,270	267,285	585,555
REDDING	826,090	571,226	436,840	780,219	7,500	2,621,875	2,246,589	4,868,464
SHASTA LAKE	90,993	62,920	52,389	85,941	3,000	295,244	247,461	542,705
SIERRA COUNTY								
LOYALTON	6,550	4,529	6,350	22,441	1,000	40,870	17,813	58,683
SISKIYOU COUNTY								
DORRIS	7,562	5,229	8,653	7,142	1,000	29,586	20,566	50,152
DUNSMUIR	15,010	10,379	12,447	40,035	1,000	78,871	40,821	119,691
ETNA	6,022	4,164	7,868	5,687	1,000	24,741	16,376	41,117
FORT JONES	6,110	4,225	7,913	5,770	1,000	25,017	16,616	41,633
MONTAGUE	10,828	7,488	10,317	10,227	1,000	39,860	29,448	69,308
MOUNT SHASTA	28,559	19,748	19,350	95,409	1,000	164,065	77,667	241,732
TULELAKE	7,932	5,485	8,841	7,492	1,000	30,749	21,571	52,321
WEED	25,548	17,666	17,816	24,129	1,000	86,159	69,479	155,638
YREKA	68,888	47,635	39,896	65,729	2,000	224,147	187,343	411,491

Local Streets and Roads - Projected FY2023-24 Revenues

Based on State Dept of Finance statewide revenue projections

Estimated January 2024

Estimated January 2024	Highway Users Tax Acct (HUTA) ⁽¹⁾ Streets & Highways Code					TOTAL HUTA	Road Mntnc Rehab Acct	TOTAL
	Sec2103 ⁽⁵⁾	Sec2105 ⁽³⁾	Sec2106 ⁽³⁾	Sec2107 ⁽³⁾	Sec2107.5 ⁽⁴⁾			
SOLANO COUNTY								
BENICIA	238,462	164,892	107,677	225,221	6,000	742,251	648,508	1,390,759
DIXON	167,426	115,772	77,031	158,129	4,000	522,358	455,322	977,680
FAIRFIELD	1,060,881	733,579	462,485	1,001,972	10,000	3,268,917	2,885,113	6,154,030
RIO VISTA	87,947	60,814	42,742	83,064	2,000	276,568	239,177	515,745
SUISUN CITY	259,353	179,338	116,690	244,951	6,000	806,331	705,321	1,511,652
VACAVILLE	900,550	622,714	393,315	850,545	10,000	2,777,124	2,449,088	5,226,212
VALLEJO	1,107,407	765,752	482,557	1,045,916	10,000	3,411,632	3,011,645	6,423,277
SONOMA COUNTY								
CLOVERDALE	79,294	54,830	39,073	74,891	2,000	250,087	215,642	465,730
COTATI	66,731	46,143	33,643	63,025	2,000	211,543	181,478	393,020
HEALDSBURG	99,533	68,825	47,821	94,006	3,000	313,185	270,684	583,869
PETALUMA	526,593	364,129	232,408	497,353	7,500	1,627,983	1,432,094	3,060,077
ROHNERT PARK	387,911	268,233	172,466	366,371	6,000	1,200,981	1,054,941	2,255,922
SANTA ROSA	1,567,208	1,083,696	682,190	1,480,184	10,000	4,823,278	4,262,094	9,085,371
SEBASTOPOL	66,220	45,790	33,422	62,543	2,000	209,976	180,089	390,065
SONOMA	94,797	65,550	45,774	89,533	3,000	298,653	257,804	556,457
WINDSOR	230,750	159,559	104,536	217,937	6,000	718,782	627,535	1,346,317
STANISLAUS COUNTY								
CERES	431,356	298,275	177,372	407,404	6,000	1,320,407	1,173,093	2,493,500
HUGHSON	66,599	46,052	31,444	62,901	2,000	208,996	181,119	390,114
MODESTO	1,928,197	1,333,313	776,209	1,821,129	10,000	5,868,849	5,243,821	11,112,670
NEWMAN	108,777	75,217	48,318	102,737	3,000	338,048	295,823	633,871
OAKDALE	204,040	141,090	86,430	192,710	5,000	629,269	554,896	1,184,165
PATTERSON	214,076	148,030	90,445	202,189	5,000	659,739	582,189	1,241,928
RIVERBANK	218,407	151,025	92,178	206,280	5,000	672,889	593,969	1,266,858
TURLOCK	634,604	438,817	258,684	599,366	7,500	1,938,971	1,725,834	3,664,805
WATERFORD	80,103	55,390	36,847	75,656	2,000	249,996	217,845	467,841
SUTTER COUNTY								
LIVE OAK	83,766	57,922	37,066	79,114	2,000	259,869	227,805	487,674
YUBA CITY	617,842	427,226	242,791	583,535	7,500	1,878,894	1,680,249	3,559,143
TEHAMA COUNTY								
CORNING	72,462	50,106	32,440	68,438	2,000	225,447	197,064	422,510
RED BLUFF	130,495	90,235	54,576	123,249	3,000	401,555	354,887	756,442
TEHAMA	3,830	2,648	6,261	3,617	1,000	17,355	10,415	27,770
TRINITY COUNTY								

Local Streets and Roads - Projected FY2023-24 Revenues

Based on State Dept of Finance statewide revenue projections

Estimated January 2024

Estimated January 2024	Highway Users Tax Acct (HUTA) ⁽¹⁾ Streets & Highways Code					TOTAL HUTA	Road Mntnc Rehab Acct	TOTAL
	Sec2103 ⁽⁵⁾	Sec2105 ⁽³⁾	Sec2106 ⁽³⁾	Sec2107 ⁽³⁾	Sec2107.5 ⁽⁴⁾			
TULARE COUNTY								
DINUBA	224,218	155,042	88,600	211,767	6,000	685,627	609,770	1,295,397
EXETER	91,152	63,030	38,868	86,090	3,000	282,140	247,892	530,032
FARMERSVILLE	91,416	63,213	38,966	86,340	3,000	282,935	248,610	531,545
LINDSAY	111,779	77,293	46,577	105,572	3,000	344,220	303,987	648,207
PORTERVILLE	551,551	381,388	210,939	520,925	7,500	1,672,303	1,499,969	3,172,272
TULARE	613,405	424,158	234,057	579,344	7,500	1,858,464	1,668,183	3,526,647
VISALIA	1,259,181	870,700	475,412	1,189,261	10,000	3,804,554	3,424,399	7,228,953
WOODLAKE	67,884	46,941	30,171	64,115	2,000	211,111	184,614	395,725
TUOLUMNE COUNTY								
SONORA	45,770	31,649	32,010	43,228	2,000	154,656	124,473	279,129
VENTURA COUNTY								
CAMARILLO	622,895	430,721	275,766	588,307	7,500	1,925,189	1,693,992	3,619,181
FILLMORE	148,771	102,873	69,517	140,510	4,000	465,671	404,590	870,261
MOORPARK	318,785	220,434	143,475	301,084	6,000	989,778	866,951	1,856,730
OJAI	67,391	46,600	34,116	63,649	2,000	213,756	183,273	397,029
OXNARD	1,775,227	1,227,537	777,043	1,676,653	10,000	5,466,459	4,827,811	10,294,270
PORT HUENEME	195,404	135,118	89,803	184,553	5,000	609,877	531,409	1,141,286
SAN BUENAVENTURA	968,945	670,008	426,301	915,142	10,000	2,990,396	2,635,091	5,625,487
SANTA PAULA	276,634	191,287	125,139	261,273	6,000	860,333	752,319	1,612,652
SIMI VALLEY	1,110,577	767,943	487,913	1,048,909	10,000	3,425,341	3,020,264	6,445,605
THOUSAND OAKS	1,114,688	770,786	489,701	1,052,792	10,000	3,437,967	3,031,445	6,469,412
YOLO COUNTY								
DAVIS	569,475	393,782	260,135	537,854	7,500	1,768,746	1,548,714	3,317,460
WEST SACRAMENTO	477,038	329,863	218,689	450,549	7,500	1,483,639	1,297,327	2,780,966
WINTERS	66,326	45,863	34,539	62,643	2,000	211,371	180,376	391,747
WOODLAND	527,165	364,525	241,165	497,893	7,500	1,638,249	1,433,650	3,071,899
YUBA COUNTY								
MARYSVILLE	116,110	80,288	43,370	109,663	3,000	352,431	315,767	668,197
WHEATLAND	33,550	23,199	15,945	31,687	1,000	105,382	91,242	196,624
Statewide Total	\$ 291,564,500	\$ 201,611,500	\$ 119,847,250	\$ 280,598,500	\$ 2,709,500	\$ 896,331,250	\$ 792,923,000	\$ 1,689,254,250

Notes:

1. The Highway Users Tax is also known as the "Motor Vehicle Fuel Tax", the "Gasoline Excise Tax" and "Article XIX Revenues."
2. Rolling Hills has no public streets and is therefore not eligible for HUTA or RMRA allocations.
3. Str&HwysCode §§ 2103, 2105, 2106, 2107 and RMRA amounts are paid monthly. Includes special payments for snow removal.
4. Str&HwysCode § 2107.5 amounts are typically paid by the State Controller once per year in July.
5. Str&HwysCode § 2103 allocations replace the former Prop42 TCRF revenues. Previously adjusted annually by the BOE until July 2019.

Local Streets and Roads - Projected FY2024-25 Revenues

Based on State Dept of Finance statewide revenue projections

Estimated January 2024

Estimated January 2024	Highway Users Tax Acct (HUTA) ⁽¹⁾ Streets & Highways Code					TOTAL HUTA	Road Mntnc Rehab Acct	TOTAL
	Sec2103 ⁽⁵⁾	Sec2105 ⁽³⁾	Sec2106 ⁽³⁾	Sec2107 ⁽³⁾	Sec2107.5 ⁽⁴⁾			
ALAMEDA COUNTY								
ALAMEDA	699,876	489,302	274,171	668,698	7,500	2,139,548	2,017,062	4,156,609
ALBANY	199,089	139,189	81,426	190,220	5,000	614,925	573,781	1,188,705
BERKELEY	1,126,346	787,459	438,313	1,076,170	10,000	3,438,288	3,246,160	6,684,448
DUBLIN	658,993	460,720	258,436	629,636	7,500	2,015,284	1,899,234	3,914,518
EMERYVILLE	112,678	78,776	48,168	107,659	3,000	350,281	324,741	675,022
FREMONT	2,041,713	1,427,417	790,622	1,950,759	10,000	6,220,511	5,884,271	12,104,783
HAYWARD	1,456,007	1,017,934	565,194	1,391,145	10,000	4,440,279	4,196,251	8,636,530
LIVERMORE	778,722	544,425	304,517	744,031	7,500	2,379,195	2,244,296	4,623,491
NEWARK	421,435	294,637	167,004	402,661	6,000	1,291,737	1,214,588	2,506,325
OAKLAND	3,846,313	2,689,062	1,485,184	3,674,967	10,000	11,705,525	11,085,176	22,790,701
PIEDMONT	99,980	69,899	43,281	95,526	3,000	311,685	288,144	599,829
PLEASANTON	708,099	495,051	277,336	676,555	7,500	2,164,541	2,040,760	4,205,301
SAN LEANDRO	806,765	564,031	315,311	770,825	7,500	2,464,431	2,325,117	4,789,548
UNION CITY	621,928	434,806	244,170	594,222	7,500	1,902,626	1,792,412	3,695,038
ALPINE COUNTY								
AMADOR COUNTY								
AMADOR	1,776	1,242	5,675	1,697	1,000	11,389	5,118	16,508
IONE	78,588	54,943	43,511	75,087	2,000	254,129	226,492	480,621
JACKSON	45,030	31,482	26,981	43,024	2,000	148,518	129,779	278,297
PLYMOUTH	9,493	6,637	9,476	9,070	1,000	35,675	27,358	63,033
SUTTER CREEK	23,470	16,408	16,361	22,424	1,000	79,663	67,641	147,304
BUTTE COUNTY								
BIGGS	17,671	12,354	12,326	16,884	1,000	60,236	50,929	111,165
CHICO	953,657	666,728	410,969	911,174	10,000	2,952,528	2,748,466	5,700,994
GRIDLEY	67,026	46,860	33,347	64,040	2,000	213,273	193,171	406,444
OROVILLE	176,987	123,736	80,180	169,103	4,000	554,006	510,081	1,064,087
PARADISE	81,181	56,756	39,376	109,980	2,000	289,292	233,965	523,258
CALAVERAS COUNTY								
ANGELS CAMP	32,421	22,666	29,025	30,977	1,000	116,089	93,438	209,527
COLUSA COUNTY								
COLUSA	57,081	39,907	20,687	54,538	2,000	174,212	164,508	338,720
WILLIAMS	49,444	34,567	18,562	47,241	2,000	151,814	142,498	294,312

Local Streets and Roads - Projected FY2024-25 Revenues

Based on State Dept of Finance statewide revenue projections

Estimated January 2024

Estimated January 2024	Highway Users Tax Acct (HUTA) ⁽¹⁾ Streets & Highways Code					TOTAL HUTA	Road Mntnc Rehab Acct	TOTAL
	Sec2103 ⁽⁵⁾	Sec2105 ⁽³⁾	Sec2106 ⁽³⁾	Sec2107 ⁽³⁾	Sec2107.5 ⁽⁴⁾			
CONTRA COSTA COUNTY								
ANTIOCH	1,025,123	716,692	430,167	979,456	10,000	3,161,438	2,954,433	6,115,870
BRENTWOOD	572,875	400,512	242,510	547,354	7,500	1,770,750	1,651,040	3,421,790
CLAYTON	98,248	68,688	45,567	93,871	3,000	309,375	283,154	592,529
CONCORD	1,114,962	779,500	467,444	1,065,293	10,000	3,437,200	3,213,351	6,650,550
DANVILLE	387,736	271,077	165,688	370,463	6,000	1,200,963	1,117,465	2,318,428
EL CERRITO	230,356	161,048	100,384	220,094	6,000	717,882	663,891	1,381,773
HERCULES	233,517	163,258	101,696	223,114	6,000	727,585	673,002	1,400,588
LAFAYETTE	225,756	157,832	98,476	215,699	6,000	703,762	650,634	1,354,397
MARTINEZ	333,328	233,039	143,112	318,479	6,000	1,033,957	960,660	1,994,618
MORAGA	153,375	107,229	68,442	146,543	4,000	479,588	442,031	921,619
OAKLEY	399,555	279,340	170,592	381,756	6,000	1,237,242	1,151,528	2,388,770
ORINDA	173,337	121,185	76,725	165,615	4,000	540,863	499,563	1,040,425
PINOLE	168,134	117,547	74,566	160,644	4,000	524,890	484,566	1,009,455
PITTSBURG	677,028	473,329	285,727	646,868	7,500	2,090,451	1,951,212	4,041,664
PLEASANT HILL	306,448	214,246	131,958	292,797	6,000	951,450	883,192	1,834,642
RICHMOND	1,029,137	719,498	431,832	983,291	10,000	3,173,758	2,966,001	6,139,759
SAN PABLO	285,971	199,930	123,461	273,232	6,000	888,594	824,176	1,712,770
SAN RAMON	751,202	525,186	316,505	717,738	7,500	2,318,132	2,164,985	4,483,117
WALNUT CREEK	624,290	436,458	263,844	596,479	7,500	1,928,570	1,799,219	3,727,790
DEL NORTE COUNTY								
CRESCENT CITY	59,922	41,893	25,314	57,253	2,000	186,382	172,697	359,079
EL DORADO COUNTY								
PLACERVILLE	96,002	67,117	68,019	91,725	3,000	325,862	276,679	602,541
SOUTH LAKE TAHOE	190,254	133,012	130,085	1,226,966	5,000	1,685,317	548,316	2,233,633

Local Streets and Roads - Projected FY2024-25 Revenues

Based on State Dept of Finance statewide revenue projections

Estimated January 2024

Estimated January 2024	Highway Users Tax Acct (HUTA) ⁽¹⁾ Streets & Highways Code					TOTAL HUTA	Road Mntnc Rehab Acct	TOTAL
	Sec2103 ⁽⁵⁾	Sec2105 ⁽³⁾	Sec2106 ⁽³⁾	Sec2107 ⁽³⁾	Sec2107.5 ⁽⁴⁾			
FRESNO COUNTY								
CLOVIS	1,105,763	773,069	391,862	1,056,503	10,000	3,337,196	3,186,837	6,524,033
COALINGA	160,435	112,164	60,959	153,288	4,000	490,845	462,377	953,222
FIREBAUGH	75,435	52,739	31,206	72,075	2,000	233,455	217,407	450,862
FOWLER	63,652	44,501	27,081	60,816	2,000	198,049	183,446	381,495
FRESNO	4,825,633	3,373,731	1,693,970	4,610,661	20,000	14,523,995	13,907,603	28,431,598
HURON	54,443	38,063	23,857	52,018	2,000	170,381	156,907	327,288
KERMAN	150,560	105,261	57,502	143,853	4,000	461,176	433,918	895,095
KINGSBURG	114,241	79,869	44,789	109,152	3,000	351,051	329,246	680,297
MENDOTA	111,772	78,143	43,925	106,793	3,000	343,634	322,131	665,765
ORANGE COVE	85,408	59,711	34,696	81,603	2,000	263,418	246,147	509,565
PARLIER	129,373	90,448	50,086	123,609	3,000	396,515	372,855	769,370
REEDLEY	225,383	157,571	83,693	215,343	6,000	687,990	649,560	1,337,550
SANGER	236,003	164,996	87,411	225,490	6,000	719,901	680,168	1,400,069
SAN JOAQUIN	32,847	22,964	16,298	31,384	1,000	104,493	94,666	199,159
SELMA	219,487	153,449	81,629	209,709	5,000	669,274	632,566	1,301,840
GLENN COUNTY								
ORLAND	73,278	51,230	27,462	70,013	2,000	223,983	211,188	435,171
WILLOWS	56,814	39,720	22,370	54,283	2,000	175,188	163,740	338,928
HUMBOLDT COUNTY								
ARCATA	165,949	116,020	82,484	158,556	4,000	527,009	478,270	1,005,279
BLUE LAKE	10,692	7,475	9,805	10,215	1,000	39,186	30,813	70,000
EUREKA	239,555	167,480	116,941	228,884	6,000	758,859	690,405	1,449,264
FERNDALE	12,370	8,648	10,591	11,819	1,000	44,427	35,650	80,077
FORTUNA	111,186	77,733	56,849	106,233	3,000	355,001	320,442	675,443
RIO DELL	30,077	21,027	18,879	28,737	1,000	99,720	86,681	186,401
TRINIDAD	2,726	1,906	6,076	2,605	1,000	14,313	7,857	22,170
IMPERIAL COUNTY								
BRAWLEY	244,546	170,969	106,901	233,652	6,000	762,067	704,788	1,466,855
CALEXICO	343,869	240,408	148,369	328,550	6,000	1,067,196	991,038	2,058,234
CALIPATRIA	58,706	41,043	29,310	56,090	2,000	187,149	169,191	356,340
EL CENTRO	398,019	278,266	170,977	380,288	6,000	1,233,550	1,147,101	2,380,650
HOLTVILLE	49,097	34,325	25,299	46,910	2,000	157,632	141,500	299,132
IMPERIAL	190,884	133,452	84,496	182,381	5,000	596,214	550,133	1,146,347
WESTMORLAND	17,938	12,541	12,289	17,138	1,000	60,906	51,697	112,602
INYO COUNTY								
BISHOP	34,383	24,038	19,676	32,852	1,000	111,949	99,094	211,043

Local Streets and Roads - Projected FY2024-25 Revenues

Based on State Dept of Finance statewide revenue projections

Estimated January 2024

Estimated January 2024	Highway Users Tax Acct (HUTA) ⁽¹⁾ Streets & Highways Code					TOTAL HUTA	Road Mntnc Rehab Acct	TOTAL
	Sec2103 ⁽⁵⁾	Sec2105 ⁽³⁾	Sec2106 ⁽³⁾	Sec2107 ⁽³⁾	Sec2107.5 ⁽⁴⁾			
KERN COUNTY								
ARVIN	175,371	122,607	53,289	167,558	4,000	522,825	505,423	1,028,248
BAKERSFIELD	3,626,347	2,535,277	1,007,466	3,464,800	10,000	10,643,890	10,451,228	21,095,118
CALIFORNIA CITY	133,324	93,211	41,663	127,385	4,000	399,583	384,244	783,826
DELANO	459,335	321,134	131,804	438,873	7,500	1,358,645	1,323,816	2,682,461
MARICOPA	9,102	6,363	7,317	8,697	1,000	32,479	26,232	58,711
MCFARLAND	125,900	88,020	39,611	120,292	3,000	376,824	362,848	739,672
RIDGECREST	247,618	173,117	73,265	236,587	6,000	736,588	713,643	1,450,231
SHAFTER	189,304	132,347	57,141	180,870	5,000	564,663	545,578	1,110,241
TAFT	77,229	53,993	26,153	73,789	2,000	233,165	222,577	455,741
TEHACHAPI	115,990	81,092	36,871	110,823	3,000	347,776	334,287	682,064
WASCO	240,790	168,343	71,377	230,063	6,000	716,572	693,962	1,410,535
KINGS COUNTY								
AVENAL	121,647	85,047	40,829	116,228	3,000	366,750	350,590	717,340
CORCORAN	192,039	134,259	61,677	183,484	5,000	576,459	553,460	1,129,919
HANFORD	522,969	365,622	159,691	499,672	7,500	1,555,453	1,507,211	3,062,664
LEMOORE	240,035	167,815	75,892	229,342	6,000	719,084	691,787	1,410,871
LAKE COUNTY								
CLEARLAKE	149,850	104,764	59,506	143,174	4,000	461,294	431,871	893,165
LAKEPORT	44,107	30,836	20,902	42,142	1,000	138,987	127,117	266,105
LASSEN COUNTY								
SUSANVILLE	143,057	100,015	48,613	219,271	4,000	514,955	412,293	927,248
LOS ANGELES COUNTY								
AGOURA HILLS	179,713	125,642	75,518	171,707	5,000	557,581	517,938	1,075,519
ALHAMBRA	733,629	512,900	293,486	700,947	7,500	2,248,462	2,114,338	4,362,800
ARCADIA	505,218	353,212	203,605	482,711	7,500	1,552,246	1,456,052	3,008,298
ARTESIA	146,413	102,361	62,414	139,891	4,000	455,080	421,967	877,046
AVALON	30,583	21,381	16,834	29,220	1,000	99,019	88,140	187,159
AZUSA	448,093	313,274	181,126	428,131	7,500	1,378,125	1,291,416	2,669,541
BALDWIN PARK	639,865	447,347	256,590	611,360	7,500	1,962,662	1,844,108	3,806,771
BELL	303,198	211,974	124,110	289,691	6,000	934,974	873,825	1,808,799
BELLFLOWER	700,453	489,706	280,431	669,249	7,500	2,147,340	2,018,725	4,166,065
BELL GARDENS	350,014	244,704	142,532	334,421	6,000	1,077,670	1,008,748	2,086,419
BEVERLY HILLS	290,455	203,065	119,095	277,516	6,000	896,132	837,100	1,733,233
BRADBURY	8,170	5,712	8,015	7,806	1,000	30,702	23,545	54,247
BURBANK	951,952	665,536	379,397	909,545	10,000	2,916,430	2,743,552	5,659,982
CALABASAS	206,300	144,230	85,980	197,110	5,000	638,619	594,562	1,233,181
CARSON	833,458	582,693	332,769	796,329	7,500	2,552,749	2,402,047	4,954,796
CERRITOS	438,458	306,538	177,335	418,926	6,000	1,347,257	1,263,648	2,610,905

Local Streets and Roads - Projected FY2024-25 Revenues

Based on State Dept of Finance statewide revenue projections

Estimated January 2024

	Highway Users Tax Acct (HUTA) ⁽¹⁾ Streets & Highways Code					TOTAL HUTA	Road Mntnc Rehab Acct	TOTAL
	Sec2103 ⁽⁵⁾	Sec2105 ⁽³⁾	Sec2106 ⁽³⁾	Sec2107 ⁽³⁾	Sec2107.5 ⁽⁴⁾			
CLAREMONT	332,538	232,486	135,655	317,724	6,000	1,024,403	958,383	1,982,785
COMMERCE	109,916	76,846	48,053	105,020	3,000	342,835	316,782	659,617
COMPTON	853,544	596,736	340,673	815,521	7,500	2,613,974	2,459,937	5,073,911
COVINA	455,676	318,576	184,111	435,377	7,500	1,401,240	1,313,272	2,714,512
CUDAHY	202,277	141,417	84,397	193,266	5,000	626,358	582,968	1,209,326
CULVER CITY	359,204	251,129	146,148	343,202	6,000	1,105,685	1,035,236	2,140,921
DIAMOND BAR	488,142	341,273	196,886	466,396	7,500	1,500,197	1,406,837	2,907,034
DOWNEY	1,011,883	707,435	402,980	966,806	10,000	3,099,105	2,916,275	6,015,379
DUARTE	202,428	141,523	84,456	193,410	5,000	626,818	583,403	1,210,221
EL MONTE	969,100	677,524	386,145	925,928	10,000	2,968,696	2,792,971	5,761,667
EL SEGUNDO	153,606	107,390	65,245	146,763	4,000	477,004	442,697	919,700
GARDENA	540,995	378,225	217,684	516,895	7,500	1,661,299	1,559,163	3,220,462
GLENDALE	1,740,078	1,216,536	689,528	1,662,561	10,000	5,318,702	5,014,950	10,333,652
GLENORA	466,253	325,970	188,272	445,482	7,500	1,433,477	1,343,752	2,777,229
HAWAIIAN GARDENS	123,876	86,605	53,546	118,357	3,000	385,384	357,013	742,397
HAWTHORNE	781,590	546,431	312,359	746,771	7,500	2,394,651	2,252,562	4,647,213
HERMOSA BEACH	175,078	122,402	73,694	167,278	4,000	542,452	504,579	1,047,031
HIDDEN HILLS	15,371	10,746	10,849	14,686	1,000	52,653	44,300	96,953
HUNTINGTON PARK	485,913	339,715	196,009	464,266	7,500	1,493,403	1,400,414	2,893,817
INDUSTRY	3,827	2,676	6,306	3,657	1,000	17,466	11,030	28,496
INGLEWOOD	963,869	673,867	384,087	920,931	10,000	2,952,754	2,777,897	5,730,650
IRVINDALE	13,329	9,319	10,045	12,735	1,000	46,427	38,414	84,842
LA CANADA FLINTRIDGE	182,457	127,561	76,598	174,329	5,000	565,944	525,846	1,091,791
LA HABRA HEIGHTS	50,225	35,114	24,564	47,988	2,000	159,891	144,750	304,641
LAKEWOOD	730,974	511,044	292,441	698,410	7,500	2,240,369	2,106,686	4,347,055
LA MIRADA	437,313	305,737	176,884	417,831	6,000	1,343,765	1,260,347	2,604,112
LANCASTER	1,567,309	1,095,748	621,543	1,497,488	10,000	4,792,087	4,517,025	9,309,113
LA PUENTE	337,608	236,031	137,650	322,568	6,000	1,039,858	972,996	2,012,854
LA VERNE	292,081	204,201	119,735	279,069	6,000	901,086	841,784	1,742,870
LAWNDALE	282,277	197,348	115,877	269,702	6,000	871,204	813,530	1,684,734
LOMITA	185,920	129,982	77,960	177,638	5,000	576,500	535,827	1,112,328
LONG BEACH	4,121,877	2,881,716	1,626,776	3,938,255	10,000	12,578,623	11,879,358	24,457,981
LOS ANGELES	34,597,110	24,187,779	13,618,908	33,055,877	20,000	105,479,674	99,709,793	205,189,467
LYNWOOD	608,945	425,730	244,422	581,818	7,500	1,868,415	1,754,996	3,623,411
MALIBU	95,362	66,670	42,325	91,114	3,000	298,472	274,836	573,308
MANHATTAN BEACH	314,991	220,219	128,750	300,959	6,000	970,918	907,812	1,878,731
MAYWOOD	223,198	156,044	92,630	213,255	6,000	691,127	643,264	1,334,391
MONROVIA	336,205	235,050	137,098	321,228	6,000	1,035,581	968,952	2,004,534
MONTEBELLO	556,544	389,095	223,802	531,751	7,500	1,708,693	1,603,975	3,312,669

Local Streets and Roads - Projected FY2024-25 Revenues

Based on State Dept of Finance statewide revenue projections

Estimated January 2024

	Highway Users Tax Acct (HUTA) ⁽¹⁾ Streets & Highways Code					TOTAL HUTA	Road Mntnc Rehab Acct	TOTAL
	Sec2103 ⁽⁵⁾	Sec2105 ⁽³⁾	Sec2106 ⁽³⁾	Sec2107 ⁽³⁾	Sec2107.5 ⁽⁴⁾			
MONTEREY PARK	542,185	379,056	218,152	518,032	7,500	1,664,926	1,562,593	3,227,519
NORWALK	918,333	642,031	366,168	877,423	10,000	2,813,954	2,646,659	5,460,614
PALMDALE	1,503,648	1,051,241	596,492	1,436,663	10,000	4,598,045	4,333,554	8,931,598
PALOS VERDES ESTATES	118,592	82,911	51,467	113,309	3,000	369,279	341,786	711,065
PARAMOUNT	474,928	332,035	191,686	453,771	7,500	1,459,921	1,368,756	2,828,677
PASADENA	1,241,316	867,837	493,263	1,186,017	10,000	3,798,433	3,577,504	7,375,937
PICO RIVERA	551,891	385,842	221,971	527,305	7,500	1,694,510	1,590,565	3,285,075
POMONA	1,351,969	945,198	536,805	1,291,741	10,000	4,135,714	3,896,411	8,032,125
RANCHO PALOS VERDES	375,872	262,782	152,707	359,128	6,000	1,156,489	1,083,273	2,239,763
REDONDO BEACH	623,748	436,079	250,247	595,961	7,500	1,913,536	1,797,658	3,711,194
ROLLING HILLS ⁽²⁾								
ROLLING HILLS ESTATES	75,000	52,435	34,313	71,659	2,000	235,407	216,153	451,560
ROSEMEAD	453,954	317,371	183,433	433,731	7,500	1,395,989	1,308,307	2,704,296
SAN DIMAS	310,284	216,928	126,898	296,462	6,000	956,573	894,248	1,850,821
SAN FERNANDO	209,994	146,812	87,433	200,639	5,000	649,879	605,208	1,255,087
SAN GABRIEL	350,431	244,996	142,696	334,820	6,000	1,078,943	1,009,951	2,088,894
SAN MARINO	111,453	77,920	48,657	106,488	3,000	347,517	321,210	668,727
SANTA CLARITA	2,048,249	1,431,986	810,794	1,957,003	10,000	6,258,033	5,903,107	12,161,140
SANTA FE SPRINGS	165,967	116,032	70,109	158,573	4,000	514,681	478,321	993,002
SANTA MONICA	828,778	579,421	330,928	791,858	7,500	2,538,484	2,388,560	4,927,045
SIERRA MADRE	99,269	69,402	43,863	94,847	3,000	310,381	286,097	596,478
SIGNAL HILL	104,455	73,028	45,904	99,802	3,000	326,188	301,043	627,231
SOUTH EL MONTE	173,524	121,315	73,082	165,794	4,000	537,715	500,100	1,037,815
SOUTH GATE	822,535	575,057	328,471	785,893	7,500	2,519,456	2,370,569	4,890,025
SOUTH PASADENA	239,440	167,399	99,021	228,773	6,000	740,633	690,072	1,430,705
TEMPLE CITY	324,395	226,793	132,451	309,944	6,000	999,582	934,914	1,934,497
TORRANCE	1,304,141	911,761	517,985	1,246,044	10,000	3,989,932	3,758,570	7,748,502
VERNON	1,874	1,310	5,537	1,790	1,000	11,511	5,400	16,911
WALNUT	252,529	176,550	104,171	241,279	6,000	780,530	727,795	1,508,325
WEST COVINA	973,309	680,467	387,801	929,950	10,000	2,981,526	2,805,101	5,786,627
WEST HOLLYWOOD	316,989	221,616	129,536	302,868	6,000	977,008	913,570	1,890,579
WESTLAKE VILLAGE	72,345	50,579	33,268	69,122	2,000	227,314	208,501	435,815
WHITTIER	780,711	545,816	312,013	745,931	7,500	2,391,971	2,250,029	4,642,000

Local Streets and Roads - Projected FY2024-25 Revenues

Based on State Dept of Finance statewide revenue projections

Estimated January 2024

Estimated January 2024	Highway Users Tax Acct (HUTA) ⁽¹⁾ Streets & Highways Code					TOTAL HUTA	Road Mntnc Rehab Acct	TOTAL
	Sec2103 ⁽⁵⁾	Sec2105 ⁽³⁾	Sec2106 ⁽³⁾	Sec2107 ⁽³⁾	Sec2107.5 ⁽⁴⁾			
MADERA COUNTY								
CHOWCHILLA	171,330	119,782	47,920	163,698	4,000	506,730	493,779	1,000,509
MADERA	583,113	407,670	151,555	557,137	7,500	1,706,975	1,680,548	3,387,523
MARIN COUNTY								
BELVEDERE	18,852	13,180	13,020	18,012	1,000	64,065	54,333	118,398
CORTE MADERA	90,531	63,293	44,275	86,498	3,000	287,598	260,914	548,512
FAIRFAX	67,399	47,121	34,189	64,397	2,000	215,105	194,246	409,351
LARKSPUR	116,079	81,154	55,415	110,908	3,000	366,557	334,543	701,100
MILL VALLEY	125,394	87,667	59,477	119,808	3,000	395,346	361,390	756,736
NOVATO	471,882	329,906	210,560	450,861	7,500	1,470,710	1,359,978	2,830,687
ROSS	20,735	14,496	13,841	19,811	1,000	69,883	59,758	129,641
SAN ANSELMO	113,451	79,316	54,269	108,397	3,000	358,433	326,968	685,401
SAN RAFAEL	546,137	381,819	242,938	521,808	7,500	1,700,202	1,573,981	3,274,183
SAUSALITO	63,172	44,165	32,346	60,358	2,000	202,041	182,064	384,105
TIBURON	81,048	56,663	40,140	77,437	2,000	257,287	233,581	490,869
MARIPOSA COUNTY								
MENDOCINO COUNTY								
FORT BRAGG	62,719	43,849	32,313	59,925	2,000	200,806	180,759	381,565
POINT ARENA	4,085	2,856	6,592	3,903	1,000	18,435	11,772	30,208
UKIAH	147,443	103,082	69,478	140,875	4,000	464,878	424,935	889,813
WILLITS	43,929	30,712	24,070	41,972	1,000	141,684	126,605	268,289
MERCED COUNTY								
ATWATER	281,948	197,118	92,478	269,388	6,000	846,933	812,583	1,659,516
DOS PALOS	51,451	35,971	20,800	49,159	2,000	159,380	148,282	307,662
GUSTINE	53,973	37,734	21,584	51,568	2,000	166,858	155,550	322,409
LIVINGSTON	126,602	88,511	44,170	120,962	3,000	383,245	364,870	748,115
LOS BANOS	420,441	293,942	135,546	401,711	6,000	1,257,639	1,211,721	2,469,360
MERCED	800,229	559,462	253,650	764,580	7,500	2,385,420	2,306,281	4,691,701
MODOC COUNTY								
ALTURAS	24,091	16,843	15,567	24,499	1,000	82,001	69,432	151,433
MONO COUNTY								
MAMMOTH LAKES	64,584	45,153	62,426	1,913,725	2,000	2,087,888	186,133	2,274,021

Local Streets and Roads - Projected FY2024-25 Revenues

Based on State Dept of Finance statewide revenue projections

Estimated January 2024

Estimated January 2024	Highway Users Tax Acct (HUTA) ⁽¹⁾ Streets & Highways Code					TOTAL	Road Mntnc	TOTAL
	Sec2103 ⁽⁵⁾	Sec2105 ⁽³⁾	Sec2106 ⁽³⁾	Sec2107 ⁽³⁾	Sec2107.5 ⁽⁴⁾	HUTA	Rehab Acct	
MONTEREY COUNTY								
CARMEL-BY-THE-SEA	28,087	19,637	13,186	26,836	1,000	88,746	80,949	169,694
DEL REY OAKS	14,004	9,790	8,981	13,380	1,000	47,155	40,359	87,514
GONZALES	75,800	52,994	27,430	72,423	2,000	230,646	218,456	449,103
GREENFIELD	176,863	123,650	57,603	168,984	4,000	531,099	509,723	1,040,822
KING CITY	122,695	85,779	41,431	117,229	3,000	370,134	353,610	723,744
MARINA	195,964	137,003	63,306	187,234	5,000	588,507	564,772	1,153,279
MONTEREY	252,724	176,686	80,252	241,466	6,000	757,129	728,358	1,485,488
PACIFIC GROVE	132,853	92,881	44,464	126,935	3,000	400,134	382,887	783,021
SALINAS	1,434,802	1,003,109	433,167	1,370,884	10,000	4,251,961	4,135,136	8,387,097
SAND CITY	3,339	2,334	5,797	3,190	1,000	15,660	9,623	25,283
SEASIDE	290,447	203,059	91,514	277,508	6,000	868,528	837,075	1,705,602
SOLEDAD	245,105	171,360	77,977	234,186	6,000	734,629	706,400	1,441,029
NAPA COUNTY								
AMERICAN CANYON	191,310	133,750	67,171	182,788	5,000	580,019	551,362	1,131,381
CALISTOGA	46,336	32,395	19,906	44,272	2,000	144,908	133,541	278,449
NAPA	689,265	481,884	229,513	658,559	7,500	2,066,720	1,986,479	4,053,199
SAINT HELENA	48,431	33,860	20,590	46,274	2,000	151,155	139,581	290,735
YOUNTVILLE	26,542	18,556	13,453	25,360	1,000	84,912	76,496	161,407
NEVADA COUNTY								
GRASS VALLEY	120,919	84,538	111,445	115,532	3,000	435,433	348,491	783,924
NEVADA CITY	29,739	20,791	31,028	28,414	1,000	110,973	85,709	196,682
TRUCKEE	148,971	104,149	136,185	1,752,257	4,000	2,145,562	429,337	2,574,900

Local Streets and Roads - Projected FY2024-25 Revenues

Based on State Dept of Finance statewide revenue projections

Estimated January 2024

Estimated January 2024	Highway Users Tax Acct (HUTA) ⁽¹⁾ Streets & Highways Code					TOTAL HUTA	Road Mntnc Rehab Acct	TOTAL
	Sec2103 ⁽⁵⁾	Sec2105 ⁽³⁾	Sec2106 ⁽³⁾	Sec2107 ⁽³⁾	Sec2107.5 ⁽⁴⁾			
ORANGE COUNTY								
ALISO VIEJO	460,410	321,885	207,868	439,899	7,500	1,437,562	1,326,913	2,764,474
ANAHEIM	3,071,285	2,147,219	1,359,421	2,934,466	10,000	9,522,391	8,851,526	18,373,917
BREA	427,873	299,138	193,518	408,812	6,000	1,335,341	1,233,142	2,568,483
BUENA PARK	748,272	523,137	334,833	714,938	7,500	2,328,680	2,156,540	4,485,220
COSTA MESA	998,927	698,377	445,387	954,427	10,000	3,107,119	2,878,935	5,986,054
CYPRESS	447,463	312,833	202,158	427,529	7,500	1,397,482	1,289,599	2,687,081
DANA POINT	294,478	205,878	134,683	281,360	6,000	922,398	848,694	1,771,092
FOUNTAIN VALLEY	507,633	354,900	228,697	485,019	7,500	1,583,750	1,463,013	3,046,762
FULLERTON	1,282,119	896,364	570,291	1,225,003	10,000	3,983,778	3,695,101	7,678,879
GARDEN GROVE	1,527,766	1,068,103	678,637	1,459,707	10,000	4,744,213	4,403,063	9,147,275
HUNTINGTON BEACH	1,762,366	1,232,118	782,109	1,683,856	10,000	5,470,451	5,079,187	10,549,638
IRVINE	2,733,038	1,910,741	1,210,234	2,611,286	10,000	8,475,299	7,876,688	16,351,986
LAGUNA BEACH	204,275	142,814	94,898	195,175	5,000	642,162	588,727	1,230,889
LAGUNA HILLS	278,752	194,883	127,746	266,334	6,000	873,715	803,370	1,677,084
LAGUNA NIGUEL	574,553	401,686	258,212	548,958	7,500	1,790,908	1,655,877	3,446,785
LAGUNA WOODS	157,682	110,240	74,347	150,657	4,000	496,926	454,443	951,370
LA HABRA	557,494	389,759	250,689	532,659	7,500	1,738,102	1,606,714	3,344,815
LAKE FOREST	773,687	540,905	346,042	739,220	7,500	2,407,354	2,229,785	4,637,140
LA PALMA	138,386	96,749	65,836	132,221	4,000	437,192	398,831	836,024
LOS ALAMITOS	107,705	75,300	52,305	102,907	3,000	341,217	310,410	651,627
MISSION VIEJO	831,744	581,495	371,649	794,691	7,500	2,587,079	2,397,108	4,984,187
NEWPORT BEACH	756,184	528,669	338,323	722,498	7,500	2,353,173	2,179,343	4,532,516
ORANGE	1,239,602	866,639	551,539	1,184,380	10,000	3,852,160	3,572,565	7,424,725
PLACENTIA	466,261	325,976	210,449	445,490	7,500	1,455,677	1,343,778	2,799,455
RANCHO SANTA MARGARITA	425,786	297,679	192,597	406,819	6,000	1,328,881	1,227,128	2,556,009
SAN CLEMENTE	569,633	398,246	256,043	544,257	7,500	1,775,679	1,641,699	3,417,378
SAN JUAN CAPISTRANO	311,590	217,841	142,230	297,709	6,000	975,370	898,010	1,873,380
SANTA ANA	2,756,437	1,927,100	1,220,554	2,633,643	10,000	8,547,733	7,944,124	16,491,856
SEAL BEACH	224,149	156,708	103,663	214,163	6,000	704,683	646,002	1,350,685
STANTON	347,065	242,643	157,877	331,604	6,000	1,085,189	1,000,252	2,085,441
TUSTIN	713,942	499,136	319,691	682,137	7,500	2,222,407	2,057,600	4,280,007
VILLA PARK	52,063	36,399	27,763	49,744	2,000	167,969	150,048	318,017
WESTMINSTER	808,061	564,937	361,203	772,063	7,500	2,513,765	2,328,853	4,842,619
YORBA LINDA	604,683	422,750	271,501	577,745	7,500	1,884,179	1,742,712	3,626,891

Local Streets and Roads - Projected FY2024-25 Revenues

Based on State Dept of Finance statewide revenue projections

Estimated January 2024

Estimated January 2024	Highway Users Tax Acct (HUTA) ⁽¹⁾ Streets & Highways Code					TOTAL HUTA	Road Mntnc Rehab Acct	TOTAL
	Sec2103 ⁽⁵⁾	Sec2105 ⁽³⁾	Sec2106 ⁽³⁾	Sec2107 ⁽³⁾	Sec2107.5 ⁽⁴⁾			
PLACER COUNTY								
AUBURN	122,375	85,556	59,101	116,924	3,000	386,955	352,688	739,643
COLFAX	17,902	12,516	12,744	17,105	1,000	61,266	51,594	112,860
LINCOLN	464,539	324,772	210,927	443,844	7,500	1,451,582	1,338,813	2,790,395
LOOMIS	60,508	42,303	31,649	57,813	2,000	194,273	174,386	368,659
ROCKLIN	633,054	442,585	285,701	604,853	7,500	1,973,694	1,824,479	3,798,173
ROSEVILLE	1,357,999	949,414	607,377	1,297,502	10,000	4,222,291	3,913,788	8,136,079
PLUMAS COUNTY								
PORTOLA	18,648	13,037	8,919	131,367	1,000	172,972	53,744	226,716
RIVERSIDE COUNTY								
BANNING	277,500	194,007	125,659	265,138	6,000	868,304	799,761	1,668,065
BEAUMONT	502,518	351,324	223,661	480,132	7,500	1,565,136	1,448,271	3,013,408
BLYTHE	165,043	115,386	76,681	157,691	4,000	518,802	475,660	994,462
CALIMESA	97,342	68,055	47,195	93,006	3,000	308,599	280,543	589,142
CANYON LAKE	98,293	68,719	47,609	93,914	3,000	311,535	283,282	594,816
CATHEDRAL CITY	456,724	319,308	203,717	436,378	7,500	1,423,628	1,316,292	2,739,919
COACHELLA	377,062	263,614	169,022	360,265	6,000	1,175,962	1,086,703	2,262,665
CORONA	1,394,202	974,725	612,016	1,332,093	10,000	4,323,036	4,018,128	8,341,164
DESERT HOT SPRINGS	289,559	202,438	130,911	276,659	6,000	905,567	834,516	1,740,083
EASTVALE	619,308	432,975	274,527	591,719	7,500	1,926,029	1,784,862	3,710,891
HEMET	798,471	558,232	352,557	762,900	7,500	2,479,661	2,301,214	4,780,874
INDIAN WELLS	42,393	29,638	23,263	40,505	1,000	136,799	122,178	258,977
INDIO	806,631	563,938	356,111	770,697	7,500	2,504,878	2,324,733	4,829,611
JURUPA VALLEY	932,248	651,760	410,821	890,718	10,000	2,895,546	2,686,762	5,582,308
LAKE ELSINORE	639,119	446,826	283,155	610,648	7,500	1,987,248	1,841,959	3,829,206
LA QUINTA	337,253	235,783	151,684	322,229	6,000	1,052,948	971,972	2,024,920
MENIFEE	977,100	683,117	430,356	933,572	10,000	3,034,146	2,816,029	5,850,175
MORENO VALLEY	1,849,603	1,293,108	810,356	1,767,207	10,000	5,730,275	5,330,606	11,060,881
MURRIETA	983,032	687,265	432,939	939,240	10,000	3,052,476	2,833,125	5,885,601
NORCO	236,732	165,505	107,904	226,186	6,000	742,326	682,267	1,424,593
PALM DESERT	450,180	314,733	200,866	430,125	7,500	1,403,404	1,297,430	2,700,834
PALM SPRINGS	392,549	274,441	175,766	375,061	6,000	1,223,818	1,131,336	2,355,154
PERRIS	701,057	490,128	310,131	669,826	7,500	2,178,643	2,020,465	4,199,108
RANCHO MIRAGE	151,066	105,615	70,594	144,337	4,000	475,611	435,377	910,988
RIVERSIDE	2,808,802	1,963,710	1,228,115	2,683,675	10,000	8,694,302	8,095,042	16,789,343
SAN JACINTO	480,434	335,884	214,043	459,032	7,500	1,496,893	1,384,623	2,881,516
TEMECULA	975,200	681,789	429,528	931,757	10,000	3,028,274	2,810,553	5,838,827
WILDOMAR	326,073	227,967	146,814	311,547	6,000	1,018,401	939,751	1,958,153

Local Streets and Roads - Projected FY2024-25 Revenues

Based on State Dept of Finance statewide revenue projections

Estimated January 2024

Estimated January 2024	Highway Users Tax Acct (HUTA) ⁽¹⁾ Streets & Highways Code					TOTAL HUTA	Road Mntnc Rehab Acct	TOTAL
	Sec2103 ⁽⁵⁾	Sec2105 ⁽³⁾	Sec2106 ⁽³⁾	Sec2107 ⁽³⁾	Sec2107.5 ⁽⁴⁾			
SACRAMENTO COUNTY								
CITRUS HEIGHTS	778,908	544,556	358,388	744,209	7,500	2,433,561	2,244,834	4,678,395
ELK GROVE	1,571,802	1,098,889	718,326	1,501,781	10,000	4,900,799	4,529,975	9,430,774
FOLSOM	759,221	530,792	349,452	725,399	7,500	2,372,364	2,188,095	4,560,459
GALT	226,946	158,664	107,823	216,836	6,000	716,269	654,064	1,370,332
ISLETON	7,060	4,936	8,005	6,745	1,000	27,745	20,346	48,091
RANCHO CORDOVA	720,318	503,594	331,791	688,229	7,500	2,251,432	2,075,975	4,327,407
SACRAMENTO	4,619,937	3,229,924	2,102,040	4,414,128	20,000	14,386,028	13,314,782	27,700,810
SAN BENITO COUNTY								
HOLLISTER	380,871	266,278	161,359	363,904	6,000	1,178,412	1,097,682	2,276,094
SAN JUAN BAUTISTA	18,506	12,938	12,407	17,681	1,000	62,532	53,334	115,867
SAN BERNARDINO COUNTY								
ADELANTO	325,558	227,606	142,539	311,055	6,000	1,012,758	938,267	1,951,025
APPLE VALLEY	674,950	471,876	290,361	644,882	7,500	2,089,570	1,945,224	4,034,793
BARSTOW	226,733	158,515	100,727	216,632	6,000	708,607	653,450	1,362,057
BIG BEAR LAKE	44,817	31,333	23,762	418,347	2,000	520,259	129,165	649,423
CHINO	827,055	578,217	354,715	790,212	7,500	2,557,699	2,383,595	4,941,294
CHINO HILLS	696,830	487,173	299,619	665,788	7,500	2,156,910	2,008,283	4,165,193
COLTON	477,939	334,140	207,009	456,647	7,500	1,483,235	1,377,432	2,860,667
FONTANA	1,898,994	1,327,638	808,236	1,814,397	10,000	5,859,266	5,472,951	11,332,217
GRAND TERRACE	116,701	81,589	54,174	111,502	3,000	366,966	336,335	703,301
HESPERIA	888,363	621,078	380,653	848,788	10,000	2,748,882	2,560,285	5,309,167
HIGHLAND	505,573	353,460	218,701	483,051	7,500	1,568,284	1,457,075	3,025,360
LOMA LINDA	224,024	156,621	99,581	214,044	6,000	700,272	645,644	1,345,916
MONTCLAIR	337,999	236,304	147,802	322,942	6,000	1,051,047	974,122	2,025,169
NEEDLES	43,778	30,607	23,322	41,828	1,000	140,535	126,170	266,705
ONTARIO	1,604,764	1,121,934	683,752	1,533,275	10,000	4,953,726	4,624,974	9,578,700
RANCHO CUCAMONGA	1,549,202	1,083,089	660,245	1,480,188	10,000	4,782,725	4,464,843	9,247,568
REDLANDS	647,022	452,351	278,546	618,199	7,500	2,003,618	1,864,736	3,868,354
RIALTO	924,753	646,520	396,049	883,557	10,000	2,860,879	2,665,162	5,526,041
SAN BERNARDINO	1,984,189	1,387,200	844,281	1,895,797	10,000	6,121,466	5,718,484	11,839,951
TWENTYNINE PALMS	233,775	163,438	103,707	223,360	6,000	730,280	673,744	1,404,024
UPLAND	701,146	490,190	301,445	669,911	7,500	2,170,192	2,020,721	4,190,913
VICTORVILLE	1,218,272	851,727	520,233	1,164,000	10,000	3,764,232	3,511,092	7,275,324
YUCAIPA	486,357	340,025	210,570	464,691	7,500	1,509,143	1,401,693	2,910,837
YUCCA VALLEY	193,522	135,296	86,676	184,901	5,000	605,394	557,734	1,163,129

Local Streets and Roads - Projected FY2024-25 Revenues

Based on State Dept of Finance statewide revenue projections

Estimated January 2024

Estimated January 2024	Highway Users Tax Acct (HUTA) ⁽¹⁾ Streets & Highways Code					TOTAL HUTA	Road Mntnc Rehab Acct	TOTAL
	Sec2103 ⁽⁵⁾	Sec2105 ⁽³⁾	Sec2106 ⁽³⁾	Sec2107 ⁽³⁾	Sec2107.5 ⁽⁴⁾			
SAN DIEGO COUNTY								
CARLSBAD	1,018,605	712,135	472,674	973,229	10,000	3,186,642	2,935,648	6,122,291
CHULA VISTA	2,440,078	1,705,925	1,125,595	2,331,377	10,000	7,612,976	7,032,370	14,645,346
CORONADO	209,372	146,378	100,971	200,045	5,000	661,766	603,417	1,265,182
DEL MAR	34,996	24,467	20,875	33,437	1,000	114,774	100,859	215,634
EL CAJON	942,797	659,135	437,853	900,797	10,000	2,950,582	2,717,166	5,667,748
ENCINITAS	544,752	380,851	255,020	520,484	7,500	1,708,606	1,569,989	3,278,595
ESCONDIDO	1,339,644	936,581	620,135	1,279,965	10,000	4,186,325	3,860,889	8,047,214
IMPERIAL BEACH	235,391	164,568	112,921	224,904	6,000	743,785	678,402	1,422,187
LA MESA	537,070	375,481	251,491	513,145	7,500	1,684,687	1,547,851	3,232,539
LEMON GROVE	243,489	170,230	116,641	232,642	6,000	769,003	701,742	1,470,745
NATIONAL CITY	544,610	380,751	254,954	520,348	7,500	1,708,163	1,569,579	3,277,743
OCEANSIDE	1,534,737	1,072,976	709,747	1,466,367	10,000	4,793,828	4,423,153	9,216,980
POWAY	432,056	302,062	203,255	412,808	6,000	1,356,181	1,245,196	2,601,377
SAN DIEGO	12,258,359	8,570,152	5,635,404	11,712,273	20,000	38,196,188	35,328,918	73,525,106
SAN MARCOS	839,425	586,865	390,371	802,030	7,500	2,626,192	2,419,245	5,045,437
SANTEE	526,938	368,397	246,837	503,464	7,500	1,653,137	1,518,650	3,171,787
SOLANA BEACH	114,525	80,068	57,405	109,423	3,000	364,421	330,065	694,485
VISTA	886,533	619,800	412,009	847,040	7,500	2,772,882	2,555,013	5,327,895
SAN FRANCISCO COUNTY								
SAN FRANCISCO	7,760,797	5,425,784	2,028,523	7,415,069	20,000	22,650,173	22,366,824	45,016,997
SAN JOAQUIN COUNTY								
ESCALON	66,058	46,183	31,760	63,115	2,000	209,117	190,382	399,499
LATHROP	311,510	217,785	131,936	297,633	6,000	964,864	897,780	1,862,644
LODI	588,681	411,563	245,058	562,456	7,500	1,815,258	1,696,594	3,511,852
MANTECA	788,569	551,310	326,638	753,440	7,500	2,427,458	2,272,678	4,700,136
RIPON	141,876	99,189	62,704	135,555	4,000	443,323	408,889	852,212
STOCKTON	2,872,285	2,008,092	1,177,063	2,744,330	10,000	8,811,770	8,278,001	17,089,771
TRACY	849,060	593,601	351,326	811,236	7,500	2,612,723	2,447,013	5,059,736
SAN LUIS OBISPO COUNTY								
ARROYO GRANDE	162,815	113,828	86,683	155,561	4,000	522,887	469,236	992,123
ATASCADERO	273,335	191,096	142,266	261,158	6,000	873,855	787,758	1,661,614
EL PASO DE ROBLES	278,494	194,703	144,861	266,088	6,000	890,146	802,627	1,692,773
GROVER BEACH	113,264	79,186	61,763	108,219	3,000	365,432	326,431	691,863
MORRO BAY	93,684	65,497	51,916	89,510	3,000	303,607	269,999	573,606
PISMO BEACH	71,466	49,964	40,742	68,282	2,000	232,454	205,967	438,422
SAN LUIS OBISPO	424,357	296,679	218,219	405,453	6,000	1,350,707	1,223,008	2,573,715

Local Streets and Roads - Projected FY2024-25 Revenues

Based on State Dept of Finance statewide revenue projections

Estimated January 2024

Estimated January 2024	Highway Users Tax Acct (HUTA) ⁽¹⁾ Streets & Highways Code					TOTAL HUTA	Road Mntnc Rehab Acct	TOTAL
	Sec2103 ⁽⁵⁾	Sec2105 ⁽³⁾	Sec2106 ⁽³⁾	Sec2107 ⁽³⁾	Sec2107.5 ⁽⁴⁾			
SAN MATEO COUNTY								
ATHERTON	61,991	43,340	32,032	59,230	2,000	198,593	178,660	377,253
BELMONT	249,750	174,607	114,512	238,624	6,000	783,492	719,785	1,503,277
BRISBANE	43,095	30,129	23,731	41,175	1,000	139,129	124,200	263,329
BURLINGAME	277,526	194,026	126,714	265,163	6,000	869,430	799,838	1,669,267
COLMA	12,938	9,045	10,484	12,362	1,000	45,829	37,288	83,117
DALY CITY	931,218	651,039	413,874	889,734	10,000	2,895,864	2,683,794	5,579,658
EAST PALO ALTO	266,781	186,514	121,994	254,897	6,000	836,187	768,871	1,605,058
FOSTER CITY	299,229	209,199	136,248	285,899	6,000	936,575	862,386	1,798,960
HALF MOON BAY	104,384	72,978	50,655	99,734	3,000	330,751	300,838	631,589
HILLSBOROUGH	101,028	70,631	49,180	96,527	3,000	320,366	291,164	611,530
MENLO PARK	303,314	212,055	138,042	289,802	6,000	949,213	874,158	1,823,371
MILLBRAE	207,152	144,826	95,800	197,924	5,000	650,702	597,019	1,247,720
PACIFICA	343,496	240,147	155,694	328,194	6,000	1,073,530	989,964	2,063,494
PORTOLA VALLEY	39,418	27,558	22,116	37,662	1,000	127,755	113,604	241,359
REDWOOD CITY	741,310	518,270	330,449	708,286	7,500	2,305,816	2,136,476	4,442,291
SAN BRUNO	390,853	273,256	176,497	373,441	6,000	1,220,046	1,126,448	2,346,494
SAN CARLOS	273,042	190,891	124,744	260,878	6,000	855,555	786,914	1,642,469
SAN MATEO	939,067	656,528	417,322	897,234	10,000	2,920,151	2,706,417	5,626,568
SOUTH SAN FRANCISCO	588,557	411,476	263,347	562,338	7,500	1,833,217	1,696,236	3,529,452
WOODSIDE	47,144	32,960	25,510	45,044	2,000	152,657	135,870	288,527
SANTA BARBARA COUNTY								
BUELLTON	45,732	31,972	21,023	43,695	2,000	144,422	131,801	276,223
CARPINTERIA	116,816	81,669	46,239	111,612	3,000	359,337	336,667	696,005
GOLETA	290,331	202,978	107,792	277,397	6,000	884,499	836,742	1,721,241
GUADALUPE	75,613	52,863	31,623	72,245	2,000	234,344	217,919	452,263
LOMPOC	394,218	275,609	144,645	376,656	6,000	1,197,128	1,136,147	2,333,275
SANTA BARBARA	776,786	543,072	280,357	742,181	7,500	2,349,896	2,238,717	4,588,613
SANTA MARIA	973,779	680,796	350,238	930,399	10,000	2,945,213	2,806,458	5,751,670
SOLVANG	51,682	36,132	23,134	49,379	2,000	162,326	148,948	311,274

Local Streets and Roads - Projected FY2024-25 Revenues

Based on State Dept of Finance statewide revenue projections

Estimated January 2024

Estimated January 2024	Highway Users Tax Acct (HUTA) ⁽¹⁾ Streets & Highways Code					TOTAL HUTA	Road Mntnc Rehab Acct	TOTAL
	Sec2103 ⁽⁵⁾	Sec2105 ⁽³⁾	Sec2106 ⁽³⁾	Sec2107 ⁽³⁾	Sec2107.5 ⁽⁴⁾			
SANTA CLARA COUNTY								
CAMPBELL	389,707	272,455	164,363	372,346	6,000	1,204,872	1,123,146	2,328,018
CUPERTINO	537,745	375,952	224,977	513,790	7,500	1,659,964	1,549,796	3,209,761
GILROY	533,492	372,979	223,235	509,726	7,500	1,646,932	1,537,538	3,184,469
LOS ALTOS	281,203	196,596	119,937	268,676	6,000	872,411	810,433	1,682,844
LOS ALTOS HILLS	75,507	52,789	35,716	72,143	2,000	238,154	217,612	455,766
LOS GATOS	298,066	208,386	126,841	284,787	6,000	924,080	859,033	1,783,113
MILPITAS	728,283	509,163	302,992	695,840	7,500	2,243,777	2,098,932	4,342,709
MONTE SERENO	31,249	21,847	17,595	29,857	1,000	101,547	90,060	191,606
MORGAN HILL	407,520	284,909	171,657	389,366	6,000	1,259,452	1,174,484	2,433,936
MOUNTAIN VIEW	742,376	519,015	308,762	709,304	7,500	2,286,957	2,139,547	4,426,503
PALO ALTO	608,279	425,264	253,857	581,181	7,500	1,876,081	1,753,076	3,629,158
SAN JOSE	9,020,521	6,306,491	3,698,204	8,618,674	20,000	27,663,890	25,997,382	53,661,272
SANTA CLARA	1,176,385	822,443	486,465	1,123,979	10,000	3,619,272	3,390,373	7,009,645
SARATOGA	277,091	193,722	118,253	264,747	6,000	859,814	798,584	1,658,398
SUNNYVALE	1,388,093	970,453	573,147	1,326,256	10,000	4,267,949	4,000,520	8,268,470
SANTA CRUZ COUNTY								
CAPITOLA	87,495	61,170	38,398	83,597	2,000	272,659	252,161	524,820
SANTA CRUZ	574,810	401,866	225,525	549,204	7,500	1,758,905	1,656,619	3,415,523
SCOTTS VALLEY	109,117	76,287	46,701	104,256	3,000	339,361	314,479	653,840
WATSONVILLE	459,770	321,438	181,350	439,288	7,500	1,409,346	1,325,070	2,734,416
SHASTA COUNTY								
ANDERSON	99,136	69,309	57,240	94,720	3,000	323,405	285,713	609,118
REDDING	833,262	582,556	445,574	796,142	7,500	2,665,035	2,401,484	5,066,519
SHASTA LAKE	91,784	64,168	53,351	87,695	3,000	299,998	264,523	564,520
SIERRA COUNTY								
LOYALTON	6,607	4,619	6,382	22,567	1,000	41,175	19,041	60,216
SISKIYOU COUNTY								
DORRIS	7,628	5,333	8,731	7,288	1,000	29,980	21,984	51,963
DUNSMUIR	15,140	10,585	12,602	40,324	1,000	79,651	43,635	123,286
ETNA	6,074	4,246	7,930	5,803	1,000	25,054	17,505	42,559
FORT JONES	6,163	4,309	7,976	5,888	1,000	25,335	17,761	43,096
MONTAGUE	10,922	7,636	10,428	10,436	1,000	40,423	31,479	71,901
MOUNT SHASTA	28,807	20,140	19,644	95,959	1,000	165,550	83,022	248,571
TULELAKE	8,001	5,594	8,923	7,644	1,000	31,162	23,059	54,220
WEED	25,770	18,016	18,079	24,622	1,000	87,487	74,269	161,756
YREKA	69,486	48,579	40,606	67,056	2,000	227,727	200,260	427,988

Local Streets and Roads - Projected FY2024-25 Revenues

Based on State Dept of Finance statewide revenue projections

Estimated January 2024

Estimated January 2024	Highway Users Tax Acct (HUTA) ⁽¹⁾ Streets & Highways Code					TOTAL HUTA	Road Mntnc Rehab Acct	TOTAL
	Sec2103 ⁽⁵⁾	Sec2105 ⁽³⁾	Sec2106 ⁽³⁾	Sec2107 ⁽³⁾	Sec2107.5 ⁽⁴⁾			
SOLANO COUNTY								
BENICIA	240,532	168,163	109,757	229,817	6,000	754,269	693,220	1,447,489
DIXON	168,880	118,068	78,491	161,356	4,000	530,795	486,715	1,017,511
FAIRFIELD	1,070,092	748,130	471,737	1,022,421	10,000	3,322,380	3,084,033	6,406,412
RIO VISTA	88,711	62,020	43,509	84,759	2,000	281,000	255,668	536,667
SUISUN CITY	261,604	182,895	118,952	249,950	6,000	819,401	753,951	1,573,352
VACAVILLE	908,369	635,066	401,169	867,903	10,000	2,822,507	2,617,945	5,440,452
VALLEJO	1,117,022	780,941	492,215	1,067,261	10,000	3,467,440	3,219,288	6,686,728
SONOMA COUNTY								
CLOVERDALE	79,982	55,918	39,766	76,419	2,000	254,084	230,510	484,595
COTATI	67,310	47,058	34,226	64,312	2,000	214,906	193,990	408,897
HEALDSBURG	100,397	70,190	48,691	95,925	3,000	318,203	289,347	607,550
PETALUMA	531,165	371,352	237,009	507,503	7,500	1,654,529	1,530,832	3,185,362
ROHNERT PARK	391,279	273,554	175,855	373,848	6,000	1,220,536	1,127,676	2,348,212
SANTA ROSA	1,580,815	1,105,191	695,884	1,510,393	10,000	4,902,282	4,555,951	9,458,234
SEBASTOPOL	66,795	46,698	34,001	63,820	2,000	213,314	192,506	405,820
SONOMA	95,620	66,850	46,602	91,360	3,000	303,432	275,578	579,011
WINDSOR	232,753	162,724	106,553	222,385	6,000	730,415	670,801	1,401,216
STANISLAUS COUNTY								
CERES	435,102	304,191	180,860	415,719	6,000	1,341,872	1,253,974	2,595,846
HUGHSON	67,177	46,965	31,983	64,184	2,000	212,310	193,606	405,916
MODESTO	1,944,939	1,359,760	791,803	1,858,296	10,000	5,964,798	5,605,366	11,570,164
NEWMAN	109,721	76,709	49,198	104,833	3,000	343,461	316,219	659,680
OAKDALE	205,811	143,888	88,080	196,643	5,000	639,423	593,154	1,232,577
PATTERSON	215,935	150,966	92,176	206,315	5,000	670,392	622,329	1,292,721
RIVERBANK	220,304	154,020	93,944	210,489	5,000	683,757	634,921	1,318,678
TURLOCK	640,114	447,521	263,817	611,598	7,500	1,970,549	1,844,825	3,815,374
WATERFORD	80,799	56,489	37,495	77,200	2,000	253,982	232,865	486,847
SUTTER COUNTY								
LIVE OAK	84,493	59,071	37,719	80,729	2,000	264,012	243,511	507,523
YUBA CITY	623,206	435,700	247,602	595,444	7,500	1,909,452	1,796,097	3,705,550
TEHAMA COUNTY								
CORNING	73,091	51,100	32,999	69,835	2,000	229,025	210,651	439,676
RED BLUFF	131,628	92,025	55,582	125,764	3,000	407,999	379,356	787,355
TEHAMA	3,863	2,701	6,290	3,691	1,000	17,544	11,133	28,677
TRINITY COUNTY								

Local Streets and Roads - Projected FY2024-25 Revenues

Based on State Dept of Finance statewide revenue projections

Estimated January 2024

Estimated January 2024	Highway Users Tax Acct (HUTA) ⁽¹⁾ Streets & Highways Code					TOTAL HUTA	Road Mntnc Rehab Acct	TOTAL
	Sec2103 ⁽⁵⁾	Sec2105 ⁽³⁾	Sec2106 ⁽³⁾	Sec2107 ⁽³⁾	Sec2107.5 ⁽⁴⁾			
TULARE COUNTY								
DINUBA	226,164	158,118	90,294	216,089	6,000	696,665	651,812	1,348,477
EXETER	91,943	64,280	39,556	87,847	3,000	286,627	264,983	551,610
FARMERSVILLE	92,210	64,466	39,657	88,102	3,000	287,435	265,751	553,186
LINDSAY	112,749	78,826	47,421	107,726	3,000	349,723	324,946	674,669
PORTERVILLE	556,340	388,952	215,106	531,556	7,500	1,699,455	1,603,387	3,302,842
TULARE	618,731	432,572	238,691	591,168	7,500	1,888,661	1,783,199	3,671,860
VISALIA	1,270,113	887,971	484,925	1,213,532	10,000	3,866,542	3,660,500	7,527,042
WOODLAKE	68,474	47,872	30,684	65,423	2,000	214,453	197,343	411,795
TUOLUMNE COUNTY								
SONORA	46,167	32,277	32,560	44,110	2,000	157,114	133,055	290,168
VENTURA COUNTY								
CAMARILLO	628,303	439,264	281,244	600,314	7,500	1,956,625	1,810,787	3,767,412
FILLMORE	150,063	104,913	70,825	143,378	4,000	473,179	432,485	905,664
MOORPARK	321,553	224,807	146,278	307,229	6,000	1,005,867	926,725	1,932,592
OJAI	67,976	47,524	34,709	64,948	2,000	217,157	195,909	413,066
OXNARD	1,790,640	1,251,885	792,654	1,710,871	10,000	5,556,050	5,160,673	10,716,723
PORT HUENEME	197,100	137,798	91,521	188,320	5,000	619,739	568,048	1,187,787
SAN BUENAVENTURA	977,358	683,297	434,822	933,819	10,000	3,039,296	2,816,772	5,856,068
SANTA PAULA	279,036	195,082	127,571	266,605	6,000	874,294	804,189	1,678,483
SIMI VALLEY	1,120,219	783,176	497,679	1,070,316	10,000	3,481,389	3,228,501	6,709,891
THOUSAND OAKS	1,124,366	786,075	499,503	1,074,278	10,000	3,494,222	3,240,453	6,734,675
YOLO COUNTY								
DAVIS	574,420	401,592	265,297	548,830	7,500	1,797,640	1,655,493	3,453,132
WEST SACRAMENTO	481,180	336,406	223,013	459,744	7,500	1,507,843	1,386,773	2,894,616
WINTERS	66,902	46,773	35,140	63,921	2,000	214,736	192,813	407,549
WOODLAND	531,742	371,756	245,943	508,054	7,500	1,664,996	1,532,496	3,197,492
YUBA COUNTY								
MARYSVILLE	117,118	81,880	44,150	111,901	3,000	358,049	337,538	695,587
WHEATLAND	33,842	23,660	16,170	32,334	1,000	107,006	97,532	204,538
Statewide Total	\$ 294,096,000	\$ 205,610,500	\$ 122,223,336	\$ 286,218,500	\$ 2,709,500	\$ 910,857,836	\$ 847,592,500	\$ 1,758,450,336

Notes:

1. The Highway Users Tax is also known as the "Motor Vehicle Fuel Tax", the "Gasoline Excise Tax" and "Article XIX Revenues."
2. Rolling Hills has no public streets and is therefore not eligible for HUTA or RMRA allocations.
3. Str&HwysCode §§ 2103, 2105, 2106, 2107 and RMRA amounts are paid monthly. Includes special payments for snow removal.
4. Str&HwysCode § 2107.5 amounts are typically paid by the State Controller once per year in July.
5. Str&HwysCode § 2103 allocations replace the former Prop42 TCRF revenues. Previously adjusted annually by the BOE until July 2019.

County HUTA and RMRA Revenue Estimates - FY 2023-24						
COUNTY	HUTA 2103	HUTA 2104	HUTA 2105	HUTA 2106	RMRA	TOTAL
ALAMEDA	\$8,611,646	\$13,959,339	\$6,336,223	\$422,066	\$23,419,766	\$52,749,041
ALPINE	\$167,164	\$289,540	\$136,781	\$20,914	\$454,609	\$1,069,009
AMADOR	\$846,038	\$736,432	\$539,528	\$198,955	\$2,300,838	\$4,621,790
BUTTE	\$2,809,146	\$2,499,325	\$1,791,424	\$419,396	\$7,639,601	\$15,158,893
CALAVERAS	\$1,281,006	\$1,041,899	\$816,912	\$335,927	\$3,483,754	\$6,959,498
COLUSA	\$992,529	\$609,447	\$632,947	\$120,258	\$2,699,228	\$5,054,410
CONTRA COSTA	\$7,270,390	\$11,334,019	\$5,394,535	\$910,024	\$19,772,157	\$44,681,124
DEL NORTE	\$516,569	\$337,377	\$329,422	\$113,814	\$1,404,834	\$2,702,015
EL DORADO	\$2,700,780	\$3,689,913	\$1,998,300	\$845,654	\$7,344,895	\$16,579,543
FRESNO	\$9,468,693	\$9,862,354	\$6,038,294	\$1,230,317	\$25,750,544	\$52,350,203
GLENN	\$1,209,474	\$748,696	\$771,295	\$142,147	\$3,289,220	\$6,160,833
HUMBOLDT	\$2,283,963	\$1,722,396	\$1,456,509	\$392,806	\$6,211,341	\$12,067,015
IMPERIAL	\$4,268,998	\$2,430,210	\$2,722,388	\$434,254	\$11,609,734	\$21,465,585
INYO	\$1,415,245	\$964,362	\$902,518	\$126,724	\$3,848,825	\$7,257,674
KERN	\$8,723,202	\$8,821,808	\$5,562,886	\$1,983,448	\$23,723,148	\$48,814,492
KINGS	\$1,803,211	\$1,357,525	\$1,149,928	\$228,616	\$4,903,915	\$9,443,196
LAKE	\$1,261,354	\$1,011,408	\$804,380	\$333,393	\$3,430,310	\$6,840,844
LASSEN	\$1,215,310	\$932,126	\$775,017	\$126,912	\$3,305,090	\$6,354,454
LOS ANGELES	\$52,583,499	\$84,556,500	\$38,444,270	\$2,700,942	\$143,003,231	\$321,288,442
MADERA	\$2,672,996	\$1,776,060	\$1,704,600	\$510,593	\$7,269,335	\$13,933,584
MARIN	\$1,958,845	\$2,602,864	\$1,277,091	\$295,766	\$5,327,167	\$11,461,734
MARIPOSA	\$805,970	\$535,655	\$513,976	\$133,093	\$2,191,873	\$4,180,568
MENDOCINO	\$1,862,171	\$1,312,784	\$1,187,528	\$396,375	\$5,064,259	\$9,823,116
MERCED	\$3,583,684	\$2,819,968	\$2,285,356	\$593,683	\$9,745,993	\$19,028,684
MODOC	\$1,190,615	\$866,510	\$759,269	\$63,103	\$3,237,932	\$6,117,429
MONO	\$872,669	\$775,292	\$556,511	\$31,366	\$2,373,262	\$4,609,100
MONTEREY	\$3,983,507	\$4,472,949	\$2,540,328	\$902,108	\$10,833,329	\$22,732,220
NAPA	\$1,376,434	\$1,595,252	\$877,767	\$311,634	\$3,743,274	\$7,904,360
NEVADA	\$1,446,026	\$1,706,177	\$922,147	\$313,063	\$3,932,534	\$8,319,947
ORANGE	\$18,644,709	\$31,512,242	\$14,228,960	\$783,408	\$50,705,139	\$115,874,457
PLACER	\$4,127,386	\$6,267,657	\$3,145,804	\$872,414	\$11,224,616	\$25,637,876
PLUMAS	\$974,908	\$1,043,462	\$621,710	\$152,423	\$2,651,308	\$5,443,811
RIVERSIDE	\$16,210,993	\$23,805,564	\$11,222,236	\$1,665,685	\$44,086,537	\$96,991,016

CSAC Current Year Estimates - Based on January Budget revenue estimates - 1/11/24

County HUTA and RMRA Revenue Estimates - FY 2023-24						
COUNTY	HUTA 2103	HUTA 2104	HUTA 2105	HUTA 2106	RMRA	TOTAL
SACRAMENTO	\$11,289,791	\$15,211,674	\$7,663,950	\$2,183,291	\$30,703,103	\$67,051,809
SAN BENITO	\$965,436	\$824,686	\$615,670	\$166,375	\$2,625,549	\$5,197,716
SAN BERNARDINO	\$15,223,796	\$22,223,441	\$10,450,873	\$1,497,037	\$41,401,809	\$90,796,955
SAN DIEGO	\$21,023,004	\$32,611,430	\$15,162,849	\$1,803,880	\$57,173,021	\$127,774,184
SAN FRANCISCO*	\$3,950,747	\$5,016,065	\$2,519,436	\$9,600	\$10,744,237	\$22,240,084
SAN JOAQUIN	\$6,455,655	\$7,982,734	\$4,116,845	\$926,869	\$17,556,449	\$37,038,551
SAN LUIS OBISPO	\$3,487,962	\$3,464,726	\$2,224,313	\$668,041	\$9,485,671	\$19,330,713
SAN MATEO	\$4,668,327	\$7,454,773	\$3,410,329	\$285,693	\$12,695,728	\$28,514,850
SANTA BARBARA	\$3,512,842	\$4,510,649	\$2,353,733	\$831,648	\$9,553,334	\$20,762,206
SANTA CLARA	\$10,795,896	\$17,424,162	\$7,811,703	\$306,158	\$29,359,932	\$65,697,850
SANTA CRUZ	\$2,273,375	\$2,853,212	\$1,542,606	\$648,061	\$6,182,547	\$13,499,800
SHASTA	\$2,684,222	\$2,555,508	\$1,711,759	\$415,138	\$7,299,864	\$14,666,491
SIERRA	\$477,811	\$433,692	\$304,706	\$35,209	\$1,299,430	\$2,550,849
SISKIYOU	\$1,930,018	\$1,549,147	\$1,230,794	\$206,176	\$5,248,771	\$10,164,905
SOLANO	\$3,330,603	\$4,650,212	\$2,137,342	\$200,940	\$9,057,727	\$19,376,825
SONOMA	\$4,865,940	\$5,822,134	\$3,103,065	\$947,131	\$13,233,146	\$27,971,415
STANISLAUS	\$5,008,307	\$5,746,363	\$3,193,855	\$730,768	\$13,620,321	\$28,299,613
SUTTER	\$1,534,627	\$1,214,782	\$978,649	\$214,198	\$4,173,489	\$8,115,745
TEHAMA	\$1,699,431	\$1,013,481	\$1,083,747	\$264,278	\$4,621,681	\$8,682,618
TRINITY	\$894,865	\$694,485	\$570,666	\$92,838	\$2,433,626	\$4,686,479
TULARE	\$6,047,509	\$4,826,647	\$3,856,565	\$759,342	\$16,446,477	\$31,936,541
TUOLUMNE	\$1,187,427	\$1,069,298	\$757,236	\$330,179	\$3,229,263	\$6,573,403
VENTURA	\$5,712,404	\$8,879,949	\$4,192,319	\$635,410	\$15,535,144	\$34,955,227
YOLO	\$2,167,334	\$2,308,376	\$1,382,134	\$183,766	\$5,894,164	\$11,935,773
YUBA	\$1,238,044	\$922,264	\$789,515	\$302,444	\$3,366,918	\$6,619,184
TOTALS	\$291,564,500	\$389,261,000	\$201,611,500	\$32,755,750	\$792,923,000	\$1,708,115,750

* county share only

C:\Users\mneuburger\OneDrive - California Counties Foundation\Desktop\[HUTA and RMRA 2023-24 Worksheet 1.11.24.xlsx]Allocations 2103-2106

County HUTA and RMRA Revenue Estimates - FY 2024-25						
COUNTY	HUTA 2103	HUTA 2104	HUTA 2105	HUTA 2106	RMRA	TOTAL
ALAMEDA	\$8,686,417	\$14,247,249	\$6,464,581	\$430,405	\$25,034,484	\$54,863,136
ALPINE	\$168,615	\$289,691	\$136,903	\$21,143	\$485,953	\$1,102,305
AMADOR	\$853,383	\$750,259	\$550,047	\$202,783	\$2,459,473	\$4,815,945
BUTTE	\$2,833,536	\$2,548,797	\$1,826,351	\$427,680	\$8,166,327	\$15,802,691
CALAVERAS	\$1,292,128	\$1,060,109	\$832,839	\$342,523	\$3,723,947	\$7,251,547
COLUSA	\$1,001,147	\$611,312	\$645,287	\$122,495	\$2,885,331	\$5,265,572
CONTRA COSTA	\$7,333,515	\$11,566,831	\$5,503,286	\$928,227	\$21,135,384	\$46,467,242
DEL NORTE	\$521,054	\$343,843	\$335,845	\$115,921	\$1,501,692	\$2,818,356
EL DORADO	\$2,724,230	\$3,743,014	\$2,028,463	\$862,555	\$7,851,302	\$17,209,564
FRESNO	\$9,550,905	\$10,061,324	\$6,156,020	\$1,254,995	\$27,525,962	\$54,549,205
GLENN	\$1,219,975	\$750,992	\$786,333	\$144,827	\$3,516,001	\$6,418,128
HUMBOLDT	\$2,303,793	\$1,755,995	\$1,484,906	\$400,552	\$6,639,594	\$12,584,840
IMPERIAL	\$4,306,063	\$2,480,039	\$2,775,466	\$442,839	\$12,410,188	\$22,414,595
INYO	\$1,427,533	\$966,119	\$920,114	\$129,091	\$4,114,189	\$7,557,047
KERN	\$8,798,941	\$9,000,615	\$5,671,343	\$2,023,350	\$25,358,783	\$50,853,032
KINGS	\$1,818,867	\$1,385,177	\$1,172,348	\$233,044	\$5,242,024	\$9,851,461
LAKE	\$1,272,306	\$1,031,861	\$820,062	\$339,938	\$3,666,818	\$7,130,986
LASSEN	\$1,225,861	\$934,265	\$790,127	\$129,283	\$3,532,965	\$6,612,502
LOS ANGELES	\$53,040,053	\$86,298,713	\$39,222,703	\$2,755,349	\$152,862,846	\$334,179,664
MADERA	\$2,696,204	\$1,811,801	\$1,737,834	\$520,721	\$7,770,532	\$14,537,093
MARIN	\$1,975,852	\$2,655,872	\$1,302,558	\$301,551	\$5,694,458	\$11,930,291
MARIPOSA	\$812,968	\$537,303	\$523,997	\$135,590	\$2,342,996	\$4,352,854
MENDOCINO	\$1,878,339	\$1,338,678	\$1,210,680	\$404,193	\$5,413,423	\$10,245,314
MERCED	\$3,614,799	\$2,877,854	\$2,329,913	\$605,491	\$10,417,948	\$19,846,005
MODOC	\$1,200,953	\$867,364	\$774,072	\$64,185	\$3,461,177	\$6,367,751
MONO	\$880,246	\$776,336	\$567,361	\$31,806	\$2,536,891	\$4,792,640
MONTEREY	\$4,018,093	\$4,564,626	\$2,589,855	\$920,150	\$11,580,252	\$23,672,977
NAPA	\$1,388,384	\$1,627,617	\$894,881	\$317,739	\$4,001,361	\$8,229,982
NEVADA	\$1,458,581	\$1,735,436	\$940,126	\$319,197	\$4,203,670	\$8,657,010
ORANGE	\$18,806,591	\$32,163,306	\$14,517,841	\$799,051	\$54,201,095	\$120,487,885
PLACER	\$4,163,222	\$6,372,636	\$3,198,670	\$889,856	\$11,998,517	\$26,622,901
PLUMAS	\$983,373	\$1,045,422	\$633,831	\$155,310	\$2,834,107	\$5,652,043
RIVERSIDE	\$16,351,744	\$24,295,098	\$11,448,834	\$1,699,164	\$47,126,163	\$100,921,004

County HUTA and RMRA Revenue Estimates - FY 2024-25						
COUNTY	HUTA 2103	HUTA 2104	HUTA 2105	HUTA 2106	RMRA	TOTAL
SACRAMENTO	\$11,387,814	\$15,525,746	\$7,819,069	\$2,227,233	\$32,819,984	\$69,779,845
SAN BENITO	\$973,819	\$841,211	\$627,673	\$169,544	\$2,806,572	\$5,418,819
SAN BERNARDINO	\$15,355,976	\$22,663,918	\$10,654,621	\$1,527,106	\$44,256,331	\$94,457,952
SAN DIEGO	\$21,205,535	\$33,282,842	\$15,469,465	\$1,840,152	\$61,114,917	\$132,912,912
SAN FRANCISCO*	\$3,985,049	\$5,119,248	\$2,568,557	\$9,600	\$11,485,017	\$23,167,471
SAN JOAQUIN	\$6,511,706	\$8,147,355	\$4,197,109	\$945,412	\$18,766,910	\$38,568,492
SAN LUIS OBISPO	\$3,518,246	\$3,535,323	\$2,267,679	\$681,352	\$10,139,678	\$20,142,278
SAN MATEO	\$4,708,859	\$7,608,479	\$3,479,344	\$291,275	\$13,571,058	\$29,659,015
SANTA BARBARA	\$3,543,342	\$4,602,697	\$2,400,806	\$848,266	\$10,212,006	\$21,607,116
SANTA CLARA	\$10,889,631	\$17,783,954	\$7,970,195	\$312,153	\$31,384,205	\$68,340,137
SANTA CRUZ	\$2,293,113	\$2,910,528	\$1,573,019	\$660,968	\$6,608,813	\$14,046,442
SHASTA	\$2,707,527	\$2,604,226	\$1,745,132	\$423,336	\$7,803,166	\$15,283,388
SIERRA	\$481,960	\$434,055	\$310,647	\$35,727	\$1,389,022	\$2,651,410
SISKIYOU	\$1,946,775	\$1,552,970	\$1,254,790	\$210,150	\$5,610,657	\$10,575,342
SOLANO	\$3,359,521	\$4,745,937	\$2,180,491	\$204,808	\$9,682,229	\$20,172,986
SONOMA	\$4,908,188	\$5,941,029	\$3,163,564	\$966,083	\$14,145,529	\$29,124,393
STANISLAUS	\$5,051,792	\$5,864,749	\$3,256,124	\$745,346	\$14,559,398	\$29,477,410
SUTTER	\$1,547,951	\$1,239,483	\$997,730	\$218,334	\$4,461,237	\$8,464,735
TEHAMA	\$1,714,187	\$1,017,933	\$1,104,876	\$269,427	\$4,940,331	\$9,046,753
TRINITY	\$902,635	\$695,596	\$581,792	\$94,520	\$2,601,417	\$4,875,959
TULARE	\$6,100,016	\$4,924,176	\$3,931,755	\$774,499	\$17,580,409	\$33,310,856
TUOLUMNE	\$1,197,737	\$1,087,389	\$771,999	\$336,659	\$3,451,910	\$6,845,695
VENTURA	\$5,762,002	\$9,061,833	\$4,276,596	\$648,061	\$16,606,243	\$36,354,735
YOLO	\$2,186,152	\$2,355,685	\$1,409,080	\$187,286	\$6,300,548	\$12,438,752
YUBA	\$1,248,793	\$940,083	\$804,908	\$308,364	\$3,599,056	\$6,901,204
TOTALS	\$294,096,000	\$396,982,000	\$205,610,500	\$33,406,664	\$847,592,500	\$1,777,687,664

* county share only

C:\Users\mneuburger\OneDrive - California Counties Foundation\Desktop\[HUTA and RMRA 2023-24 Worksheet 1.11.24.xlsx]Allocations 2103-2106