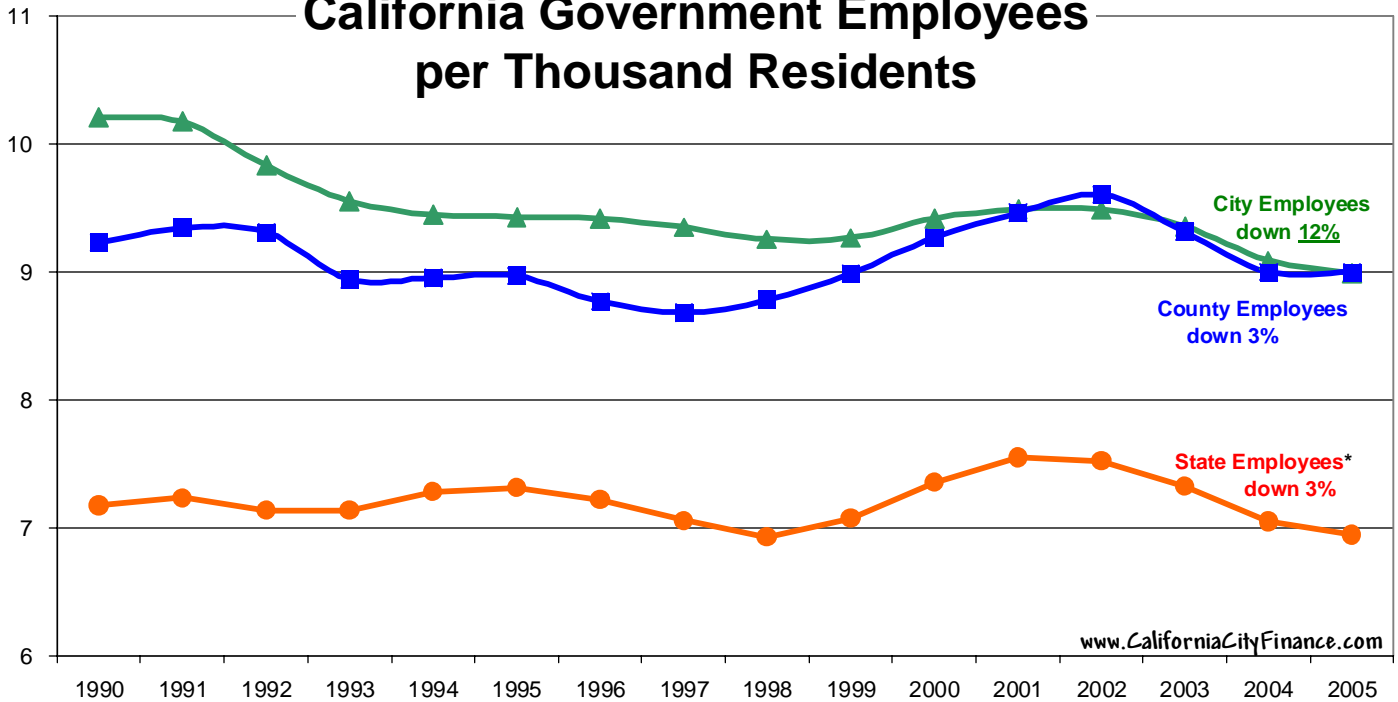


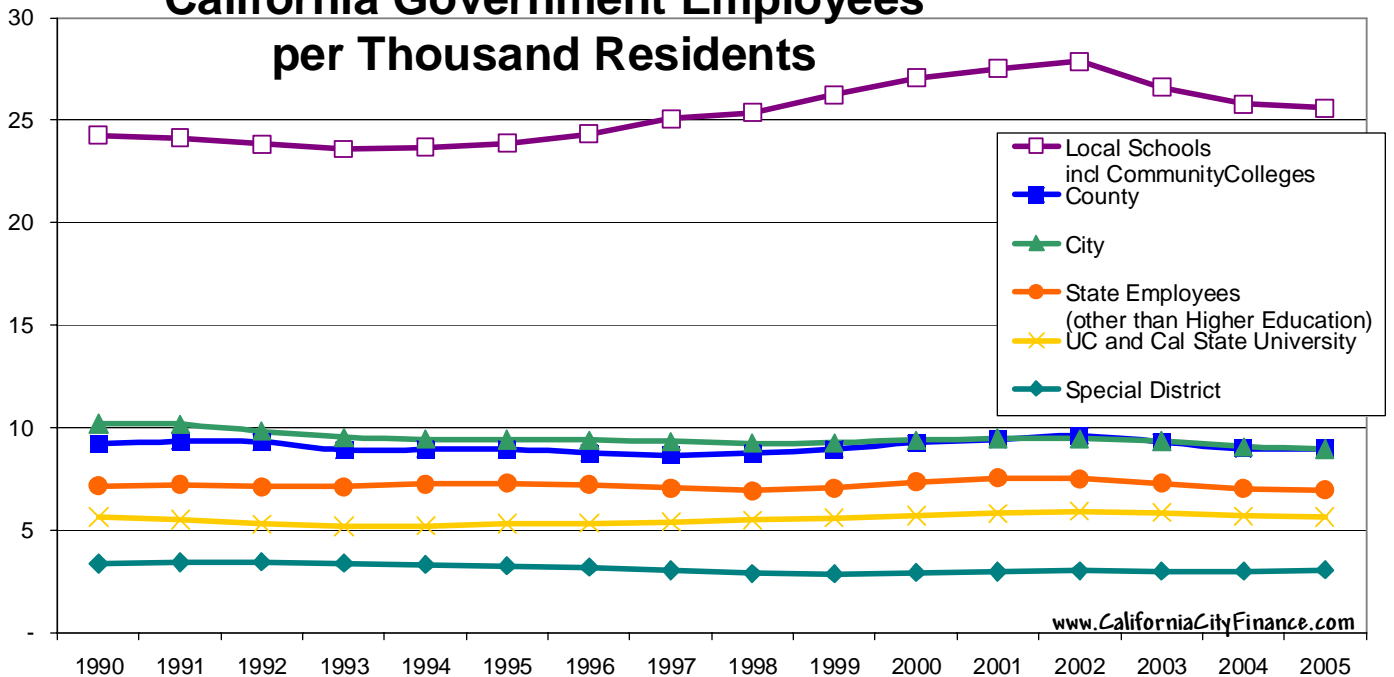
California Government Employees per Thousand Residents



Source: Calif Empl Devpt Dept Labor Market Information Division
City employees per city residents, state employees per state residents, county residents per state residents (all are in counties).

*State Employees not including higher education

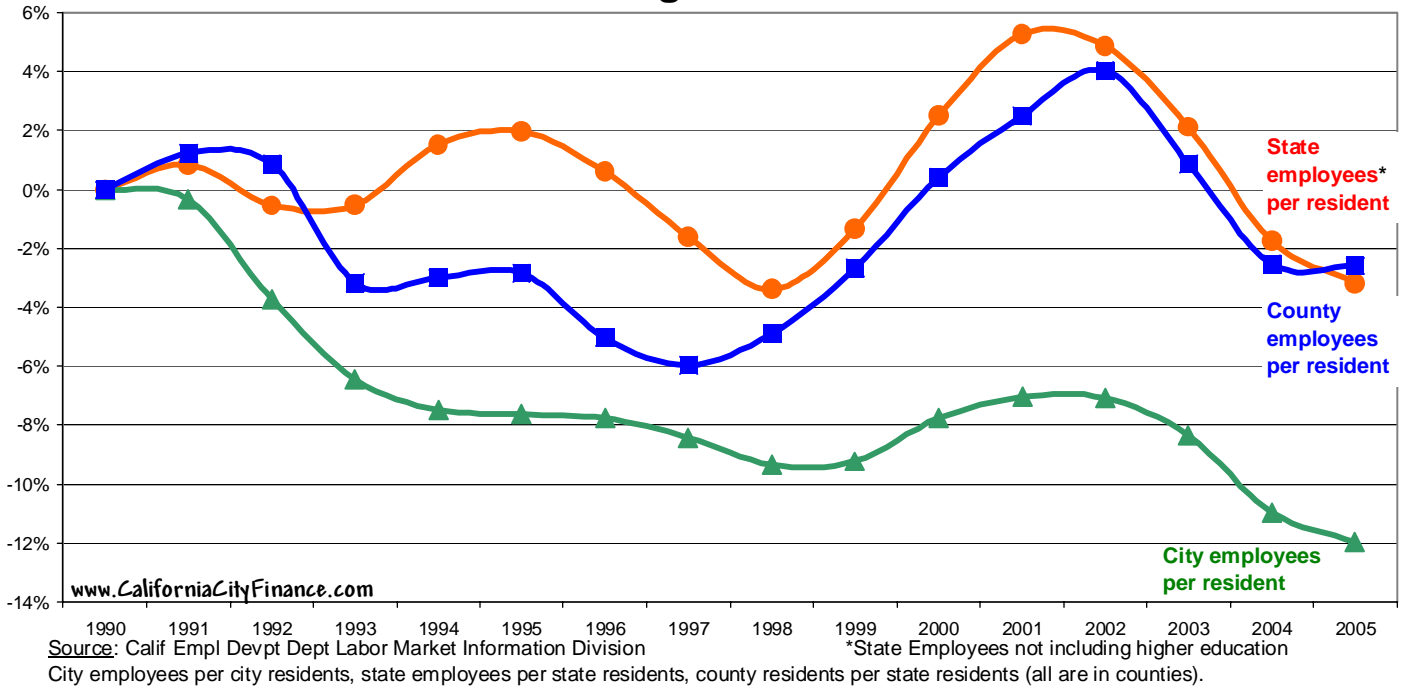
California Government Employees per Thousand Residents



Source: Calif Empl Devpt Dept Labor Market Information Division
City employees per city residents, other employees per total state residents.

*State Employees not including higher education

Growth(Decline) of Calif Gov't Employees per resident % change since 1990



Growth(Decline) of Calif Gov't Employees per resident % change since 1990

