

Shared Revenue Estimates: State Revenue Allocations to Cities and Counties
Local Streets and Roads Estimates: 2025-26, 2026-27
Including Highway Users Tax Account (HUTA) and
Road Maintenance and Rehabilitation Account (RMRA)

The state of California imposes per-gallon excise taxes on gasoline and diesel fuel, sales taxes on gasoline and diesel fuel and registration taxes on motor vehicles with allocations dedicated to transportation purposes.¹ The local (city and county) portions of these allocations flow through the Highway Users Tax Account (HUTA), the familiar gasoline tax revenues that have been in place for decades, and the Road Maintenance and Rehabilitation Account (RMRA) which allocates much of the revenue from the Road Repair and Accountability Act of 2017 (SB1 Beall).

State taxes transferred to and allocated through the state Highway Users Tax Account (HUTA) include:

- The per gallon “gasoline tax” and “diesel fuel tax” imposed on the use of vehicle fuels.
- The “use fuel tax,” imposed on vendors and users of motor vehicle fuels that are not taxed under either the gasoline or diesel fuel tax, such as liquefied petroleum gas, ethanol, methanol and natural gas (both liquid and gaseous) for use on state highways. Use Fuel Tax rates vary depending on the type of fuel.
- Variable rate per gallon gasoline diesel fuel excise taxes imposed in 2010-11 in a complicated arrangement known as the “fuel tax swap.” This rate replaced the previous Proposition 42 sales tax on gasoline.

Transportation taxes allocated to cities and counties through the Road Maintenance and Rehabilitation Account (RMRA) established by the Road Repair and Accountability Act of 2017 (SB1 Beall) include:

- An additional 12 cent per gallon increase to the gasoline excise tax effective November 1, 2017 with annual inflation adjustments beginning July 1, 2020.
- An additional 20 cent per gallon increase to the diesel fuel excise tax effective November 1, 2017 with half of the revenues going to the state Trade Corridor Enhancement Account (TCEA) and half to the RMRA. Annual inflation adjustments beginning July 1, 2020.
- An additional vehicle registration tax called the “Transportation Improvement Fee” with rates based on the value of the motor vehicle effective January 1, 2018 with annual inflation adjustments beginning July 1, 2020.
- An additional \$100 vehicle registration tax on zero emissions vehicles of model year 2020 or later effective July 1, 2020 with annual inflation adjustments beginning July 1, 2021.

The Road Repair and Accountability Act of 2017 (SB1 Beall) also adopted annual inflationary adjustments beginning July 1, 2020 to all per-gallon motor vehicle fuel excise taxes including the rates allocated through the Highway Users Tax Account (HUTA).

¹ Taxes on aircraft jet fuel are transferred to the state Aeronautics Account.

Highway Users Tax Account (HUTA)

Revenue Allocations – Streets & Highways Code Sec 2103-2108 “HUTA”

Cities and counties receive revenue from the motor vehicle fuel taxes imposed pursuant to Revenue and Taxation Code Section 7360(a) and (b) through the Highway User Tax Account under the following formulas outlined in the Streets and Highways code and illustrated in Figure 1.

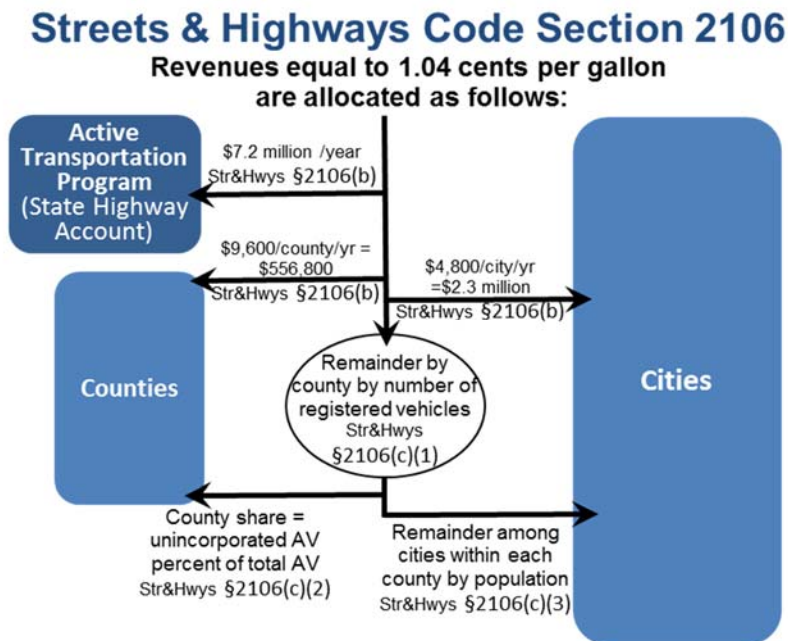
Section 2104. Section 2104 allocates funds to counties with designated allotments for engineering and administration, snow removal, heavy rainfall / storm damage as well as county streets, roads and public mass transit guideways and facilities.

Section 2105. Section 2105(a) allocates 11.5 percent of the tax revenues in excess of 9 cents per gallon (i.e. the Proposition 111 rate) monthly among counties based on population.

Section 2105(b) allocates 11.5 percent of the tax revenues in excess of 9 cents per gallon (i.e. the Proposition 111 rate) monthly among cities based on population.

Section 2106. Revenues equal to 1.04 cents per gallon are allocated as follows:

- \$7.2 million per year to the State Bicycle Transportation Account.
- \$400 per month to each city (\$2,313,600 per year among the 482 eligible cities²)
- \$800 per month to each county (\$556,800 per year among the 58 counties)
- The residual amount to each county and the cities in that county based on registered vehicles. In each county, from this amount, the county receives an allotment based on the share of assessed value of the county which is in the unincorporated area. The remainder is allocated to the cities within the county based on population.



² The city of Rolling Hills has only private streets and is therefore not eligible to receive these allocations.

Section 2107. This section provides monthly allocations to cities of 1.315 cents per gallon of gasoline, 1.8 cents per gallon of diesel, and 2.59 cents per liquefied petroleum gas (LPG), as follows.

- a. Each city with snow removal costs in excess of \$5,000 is allocated 50 percent of the cost exceeding \$5,000.
- b. The remainder is allocated to cities based on population.

Section 2107.5. These funds (about \$2.7 million per year) are allocated to cities annually in July based on population as follows:

Streets & Highway Code §2107.5	
City Population	Annual Allocation
over 500,000	\$ 20,000
100,000 to 500,000	\$ 10,000
50,000 to 99,999	\$ 7,500
25,000 to 49,999	\$ 6,000
20,000 to 24,999	\$ 5,000
15,000 to 19,999	\$ 4,000
10,000 to 14,999	\$ 3,000
5,000 to 9,999	\$ 2,000
less than 5,000	\$ 1,000

Section 2107.5 funds must be used for engineering costs and administrative expenses related to city streets. Cities with populations under 10,000 may also expend the moneys for street construction or acquisition of street rights-of-way.

Section 2103 HUTA and the 2010 Gasoline Sales Tax – Excise Tax Swap

In March 2010 as a part of a special budget session called by Governor Schwarzenegger, the Legislature enacted a swap of state sales taxes on gasoline for a gasoline excise tax. Intended to be “revenue neutral,” the fuel tax swap provided the Legislature with greater flexibility in the use of funds, in particular relieving the general fund from the cost of state transportation debt service payments. The fuel tax swap:

1. Repealed the state sales tax on gasoline (local rates including the Bradley Burns are NOT affected);
2. Increased the excise tax on gasoline by 17.322 cents and added an annual adjustment mechanism intended to ensure the new excise tax provides, over time, the same amount of revenues expected from the sales tax on gas (no more, no less);
3. Increased the sales tax on diesel by 1.75 percent and allocated 75 percent to local transit agencies and 25 percent to state transit programs. The excise tax on diesel was reduced from 18 cents to 13.6 cents. Sales tax revenues from diesel must go to transit funding.
4. Provided for a specific allocation of the funds among state and local transportation needs.

Revenues from the new Section 2103 excise tax rate are now allocated as follows:

1. State transportation debt service;
2. Remainder allocated:
 - a. 44 percent to the State Transportation Improvement Program (STIP);
 - b. 12 percent State Highway Operation and Protection Program (SHOPP);
 - c. 44 percent evenly split between cities and counties using current HUTA formulas.

Section 2103 funds are allocated to cities on a per capita basis and to counties 75 percent based on the proportion of registered vehicles and 25 percent based on the proportion of maintained county road miles.

The law included expressed legislative intent to fully replace the local streets and road funds cities and counties would have received under Proposition 42 state sales tax on gasoline with allocations from the new higher motor vehicle excise tax (HUTA) rate.

However, the swap created certain revenue effects related to the timing and receipt of revenues. In particular, the law provided that the new excise tax rate be adjusted annually by the BOE to garner an amount of revenues equal to what Prop42 would have provided in the prior year. Thus, the annual Sec 2103 funds were always “looking backward.” If the Section 2103 amounts generated less than Prop42 would have, the difference was made up until the following year.

In the years following the swap, there were a number of snafus and changes in interpretation of the Section 2103 allocation. In FY2011-12 SCO allocated more money to cities and counties and did not fully backfill state transportation programs for weight fees that were used for debt service and loans that those funds would have otherwise received. This was contrary to the Legislature’s intention, but the statute was not clear. The statute was clarified in the 2013 budget to clarify the original intent of the weight fee swap to fully backfill state transportation funds. [Streets & Highways Code 2103 (a)(1)(D)].

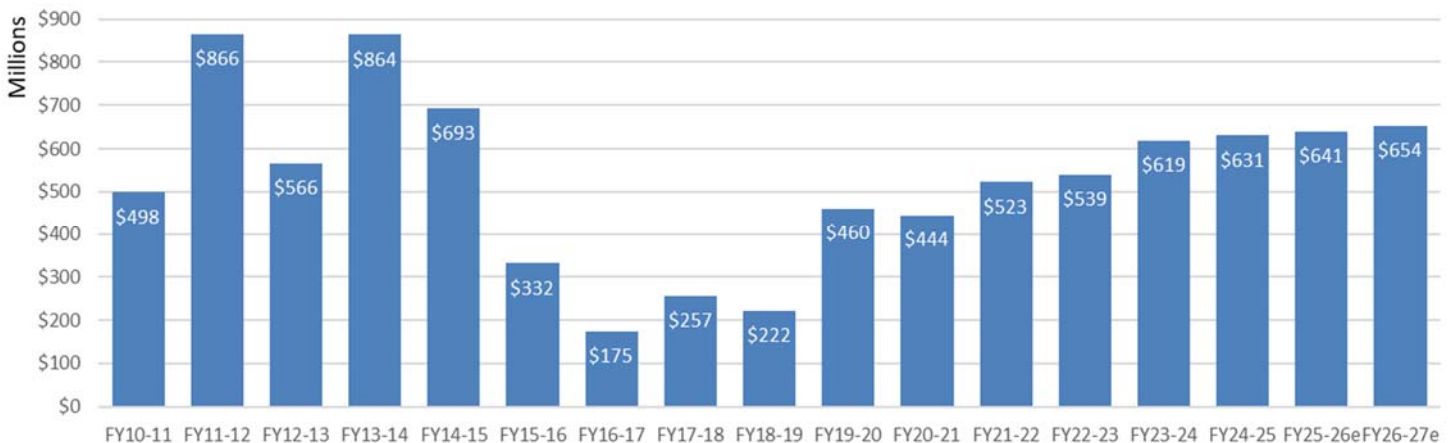
Changes to HUTA Allocated Rates, Including the Variable Rate by the Road Repair and Accountability Act of 2017 (SB1 Beall)

In addition to increasing various fuel and motor vehicle registration taxes, the Road Repair and Accountability Act of 2017 (SB1 Beall) removed BOE’s discretionary rate setting role over the Section 2103 variable rate and reset the variable rate at 17.3 cents per gallon on July 1, 2019, up from the current 11.7 cents. This adjustment more than doubled Section 2103 revenue allocations for FY2019-20 over the prior year.

With regard to diesel fuel taxes, SB1 also eliminated the price-based adjustment mechanism applied to the diesel fuel tax rate.

Since 2020, gasoline and diesel fuel excise tax rates are increased on July 1 by the change in the California Consumer Price Index from the prior year. These include the 18 cent per gallon base rate, the 17.3 percent per gallon rate, the diesel fuel excise tax rate and vehicle registration taxes.

Streets & Highways Code Section 2103 Variable Gas Tax Allocations to Cities and Counties



California Gasoline Excise Tax Rates - Per Gallon				
Effective Date	Base Rate	Sec2103	SB1 Rate	Total
July 1, 2015	\$ 0.180	\$ 0.120		\$ 0.300
July 1, 2016	\$ 0.180	\$ 0.098		\$ 0.278
July 1, 2017	\$ 0.180	\$ 0.117		\$ 0.297
Nov 1, 2017*	\$ 0.180	\$ 0.117	\$ 0.120	\$ 0.417
July 1, 2019	\$ 0.180	\$ 0.173	\$ 0.120	\$ 0.473
July 1, 2020	\$ 0.192	\$ 0.185	\$ 0.128	\$ 0.505
July 1, 2021	\$ 0.194	\$ 0.187	\$ 0.130	\$ 0.511
July 1, 2022	\$ 0.205	\$ 0.197	\$ 0.137	\$ 0.539
July 1, 2023	\$ 0.220	\$ 0.212	\$ 0.147	\$ 0.579
July 1, 2024	\$ 0.227	\$ 0.218	\$ 0.151	\$ 0.596
July 1, 2025	\$ 0.233	\$ 0.224	\$ 0.155	\$ 0.612
July 1, 2026e	\$ 0.241	\$ 0.232	\$ 0.161	\$ 0.634

California Diesel Excise Tax Rates			
Effective Date	Base Rate	SB1 Rate	Total
July 1, 2017	\$ 0.160		\$ 0.160
Nov 1, 2017*	\$ 0.160	\$ 0.200	\$ 0.360
July 1, 2019	\$ 0.160	\$ 0.200	\$ 0.360
July 1, 2020	\$ 0.171	\$ 0.214	\$ 0.385
July 1, 2021	\$ 0.173	\$ 0.216	\$ 0.389
July 1, 2022	\$ 0.182	\$ 0.228	\$ 0.410
July 1, 2023	\$ 0.196	\$ 0.245	\$ 0.441
July 1, 2024	\$ 0.202	\$ 0.252	\$ 0.454
July 1, 2025	\$ 0.207	\$ 0.258	\$ 0.465
July 1, 2026e	\$ 0.214	\$ 0.268	\$ 0.482

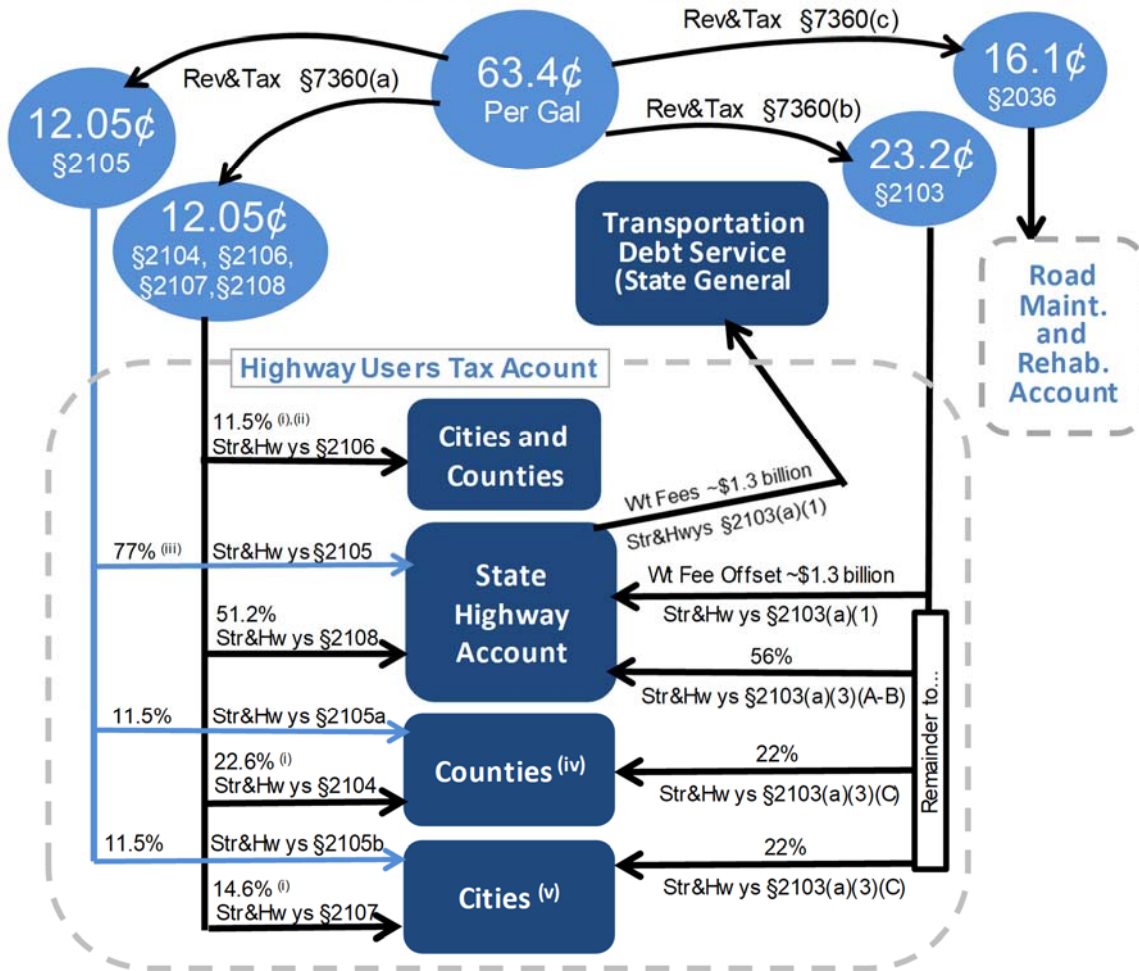
Use of Funds: HUTA

The use of local Motor Vehicle Fuel Tax funds is restricted by Article XIX of the California State Constitution and by Streets and Highways Code Section 2101. All Motor Vehicle Fuel Tax funds allocated from the Highway Users Tax Account must be expended for the following:

- (a) The research, planning, construction, improvement, maintenance, and operation of public streets and highways (and their related public facilities for nonmotorized traffic), including the mitigation of their environmental effects, the payment for property taken or damaged for such purposes, and the administrative costs necessarily incurred in the foregoing purposes.
- (b) The research and planning for exclusive public mass transit guideways (and their related fixed facilities), the payment for property taken or damaged for such purposes, and the administrative costs necessarily incurred in the foregoing purposes.
- (c) The construction and improvement of exclusive public mass transit guideways (and their related fixed facilities), including the mitigation of their environmental effects, the payment for property taken or damaged for such purposes, the administrative costs necessarily incurred in the foregoing purposes, and the maintenance of the structures and the immediate right-of-way for the public mass transit guideways.
- (d) The payment of principal and interest on voter-approved bonds issued for the purposes specified above.

Allocation of Gasoline Excise Tax Revenues

rates effective July 1, 2026



(i) The 4.39¢ local share of diesel fuel tax is allocated 1.8¢ to counties and 2.59¢ to cities.
 (ii) Str&Hwy Code §2106 funds are distributed based on registered vehicles, assessed property valuation, and population.
 (iii) A portion of funds in State Highway Account is allocated among counties and cities for Regional Transportation Improvement Programs.
 (iv) County apportionments are based on numbers of registered vehicles and county road mileage.
 (v) City apportionments are based on population.
 (vi) Beginning July 1, 2020 and annually thereafter, these rates are subject to an annual cost-of-living adjustment.

Three Year State General Fund TCRF Loan Repayment Funds

SB1 stipulated the repayment of \$706 million by the state General Fund to transportation funds over three fiscal years: 2017-18, 2018-19, and 2019-20. Under SB1, \$75 million was allocated to local streets and roads from repayments of Transportation Congestion Relief Funds (TCRF) in each of these three years. These funds were allocated half to cities and half to counties with the city funds allocated among cities on a per capita basis, the county funds allocated among counties based on numbers of registered vehicles and county road mileage.

These TCRF revenues may be deposited in local HUTA funds.³ However, these TCRF funds carried slightly different use requirements than HUTA funds. TCRF funds could be expended only for street and highway maintenance, rehabilitation, reconstruction or storm damage repair. For these purposes,

- “Maintenance” means patching and/or overlay and sealing.
- “Reconstruction” includes any overlay, sealing or widening of the roadway, if the widening is necessary to bring the roadway width to the state minimum standards, but does not include widening for the purpose of traffic capacity.
- “Storm damage repair” is repair or reconstruction of local streets and highways and related drainage improvements that have been damaged due to winter storms and flooding, and construction of drainage improvements to mitigate future roadway flooding and damage problems, in those jurisdictions that have been declared disaster areas by the President of the United States.

Road Maintenance and Rehabilitation Account (RMRA)

Revenue Allocations – Streets & Highways Code Sec 2031 “RMRA”

The Road Repair and Accountability Act of 2017 (SB1 Beall) represented a significant additional investment in California’s transportation systems of over \$5 billion per year. The Act increased per gallon fuel excise taxes, diesel fuel sales taxes and vehicle registration taxes, stabilized the problematic price-based fuel tax rates and provided for inflationary adjustments to rates in future years. The Act is more than doubling local streets and road funds allocated through the Highway Users Tax Account (HUTA) and through the Road Maintenance and Rehabilitation Account (RMRA) which it established.

The RMRA receives funds⁴ from the following new taxes imposed under the Road Repair and Accountability Act of 2017:

- A 12 cent per gallon increase to the gasoline excise tax effective November 1, 2017.
- A 20 cent per gallon increase to the diesel fuel excise tax effective November 1, 2017, half of which will be allocated to Trade Corridors Enhancement Account (TCEA) with the remaining half to the RMRA.
- A new vehicle registration tax called the “transportation improvement fee,” effective January 1, 2018, based on the market value of the vehicle.
- An additional new \$100 vehicle registration tax on zero emission vehicles model year 2020 and later effective July 1, 2020.

³ Note that the “loan repayment” is between the state general fund and state transportation funds. From an accounting standpoint this is NOT a debt repayment to local agencies, it is simply revenue.

⁴ In addition, funds from a 4 percent increase in the diesel sales tax to 5.75 percent from the prior 1.75 percent effective November 1, 2017 are allocated to the Public Transportation Account.

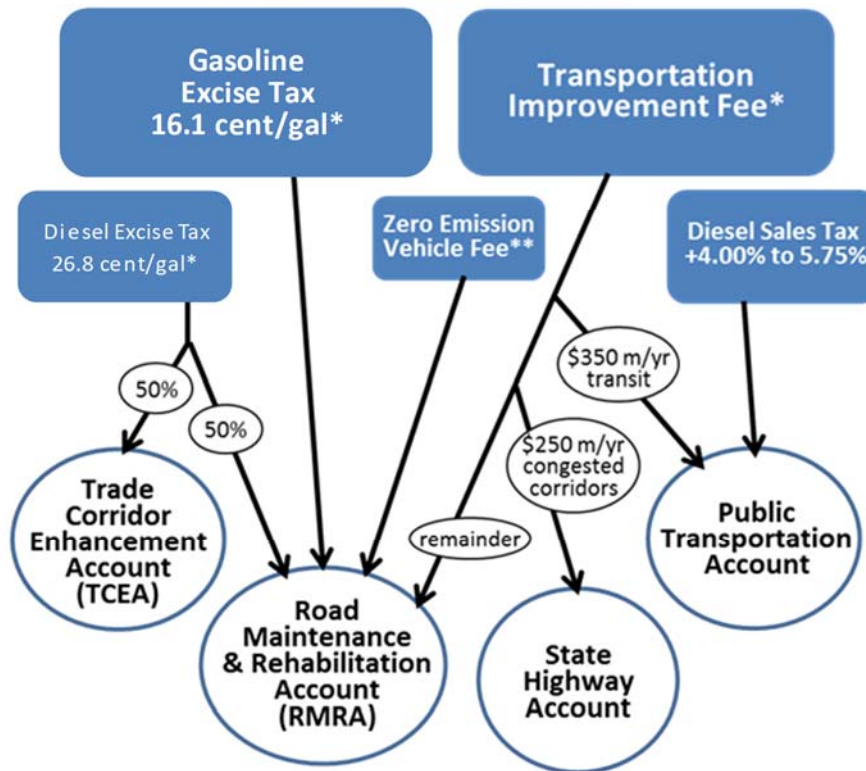
- Annual rate increases to these taxes every July 1 (January 1 for the registration fees) for the change in the California Consumer Price Index. The first adjustment made on July 1, 2020 covered CPI change for two years: November 1, 2017 through November 12, 2019.

SB1 Transportation Improvement Fee								
Vehicle Value	Jan 2018	Jan 2020	Jan 2021	Jan 2022	Jan 2023	Jan 2024	Jan 2025	Jan 2026
0 - \$4,999	\$ 25	\$ 27	\$ 27	\$ 28	\$ 29	\$ 32	\$ 32	\$ 33
\$5,000 - \$24,999	\$ 52	\$ 54	\$ 55	\$ 56	\$ 59	\$ 65	\$ 65	\$ 66
\$25,000 - \$34,999	\$ 105	\$ 107	\$ 110	\$ 112	\$ 118	\$ 129	\$ 129	\$ 132
\$35,000 - \$59,999	\$ 157	\$ 161	\$ 165	\$ 168	\$ 177	\$ 194	\$ 194	\$ 198
\$60,000 & over	\$ 183	\$ 188	\$ 192	\$ 196	\$ 206	\$ 227	\$ 227	\$ 231

SB1 Road Improvement Fee (RIF)								
	Jan 2020	Jan 2021	Jan 2022	Jan 2023	Jan 2024	Jan 2025	Jan 2026	
ZEV vehicle*	\$ 100	\$ 101	\$ 103	\$ 108	\$ 118	\$ 118	\$ 121	

*Zero Emission Vehicles, 2020 or later models.

Road Maintenance and Rehabilitation Account Revenues

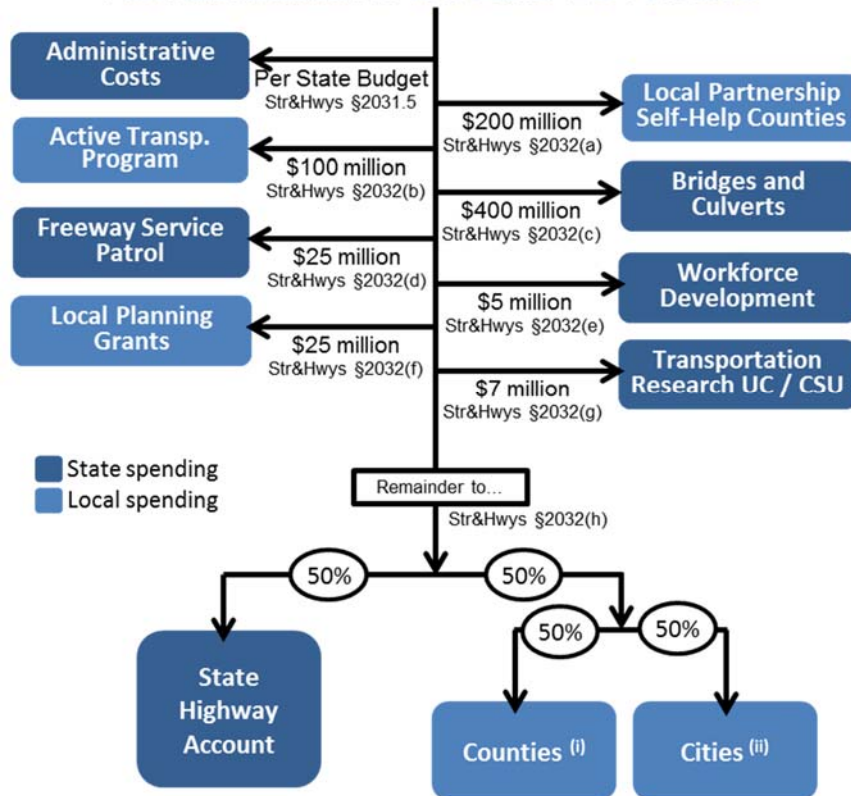


* adjusted for inflation annually beginning 7/1/2020
 ** effective 7/1/2020 adjusted for inflation annually beginning 7/1/2021

The Road Repair and Accountability Act directs the State Controller to allocate, on a monthly basis, fifty percent of the revenues in the RMRA to the State Highway Operation and Protection Program (SHOP) in the State Highway Account and half to cities and counties. But there are a series of specific program allocations, subject to appropriation in the annual state budget, to be taken out first:

1. Administrative costs.
2. \$200 million for the State-Local-Partnership Program for existing and aspiring self-help jurisdictions.
3. \$100 million annually for the Active Transportation Program for the purpose of encouraging increased use of active modes of transportation, such as biking and walking.
4. \$400 million for state bridge and culvert maintenance and rehabilitation.
5. \$25 million for the state’s Freeway Service Patrol program.
6. \$5 million for five years through FY 2021-22 for pre-apprenticeship training programs of the California Workforce Development Board.
7. \$25 million for local planning grants to encourage local and regional planning.
8. \$7 million for transportation research and transportation-related workforce education, training, and development including \$5 million to the University of California and \$2 million to the California State University.

Allocation of Road Maintenance and Rehabilitation Account Revenues



(i) County apportionments are based on numbers of registered vehicles and county road mileage.
 (ii) City apportionments are based on population.

Use of Funds: RMRA [Streets and Highways Code Section 2030]

The use of RMRA local streets and roads funds is similar but, not identical, to HUTA use rules. Pursuant to Streets and Highways Code Section 2030, RMRA local streets and roads allocations must be used for projects “that include, but are not limited to,” the following

- Road maintenance and rehabilitation
- Safety projects
- Railroad grade separations
- Traffic control devices
- Complete street components, “including active transportation purposes, pedestrian and bicycle safety projects, transit facilities, and drainage and storm-water capture projects in conjunction with any other allowable project.”

RMRA funds may also be used to satisfy a match requirement for projects eligible for state or federal funds.

SB1 also contains non-obligatory intent language regarding the use of funds. “To the extent possible and cost effective,” cities and counties are to use a use:

- advanced recycling techniques that reduce greenhouse gas emissions;
- automotive technologies, ZEV fueling, infrastructure-to-vehicle;
- communications autonomous vehicle systems;
- resiliency re climate change, fires, floods, sea level rise; and
- complete street elements, access for bicycles, pedestrians.

If a city or county has an average Pavement Condition Index that meets or exceeds 80, the city or county may spend its RMRA funds on transportation priorities other than these. [Streets and Highways Code Sec 2037]

Maintenance of Effort: RMRA [Streets and Highways Code Sec 2036]

The Road Repair and Accountability Act contains a local agency maintenance of effort (MOE) requirement that applies to funds allocated through the RMRA. The Act states that the MOE requirement is to ensure that these new roads funds do not supplant existing levels of city and county general revenue spending on streets and roads. The MOE for the receipt of RMRA funds state that a city or county must maintain general fund spending for street, road, and highway purposes at no less than average of 2009–10, 2010–11, and 2011–12 years. In making this calculation an agency may exclude one-time funds. A city or county that fails to comply in a particular year may make it up with in additional expenditures in the following year.

The Act provides that the State Controller may perform audits to ensure compliance with these MOE rules. If the State Controller determines that a city or county has not met its MOE, the agency will be required to reimburse the state for the funds it received during that fiscal year. However, a city or county that fails to comply in a particular fiscal year may expend during that fiscal year and the following fiscal year a total amount that is sufficient to comply. Any funds withheld or returned as a result of a failure to comply will be reapportioned to the other counties and cities whose expenditures are in compliance.

For further guidance, see the State Controller’s “*Guidelines Relating to Gas Tax Expenditures for Cities and Counties.*”

Spending Plans and Reports: RMRA [Streets and Highways Code Sec 2034]

The Road Repair and Accountability Act stipulates that, prior to receiving RMRA funds in a fiscal year, a city or county must submit to the California Transportation Commission (CTC) a project list pursuant to an adopted budget. The list must include for each project: description, location, schedule, useful life. [Streets and Highways Code Sec 2034(a)]

The Road Repair and Accountability Act also requires that a city or county submit to the CTC an annual report of project completion in order to receive RMRA funds. The report must include descriptions of all projects for which RMRA funds were expended including: description, location, funds expended, completion date, estimated useful life of the project.

Budgeting and Accounting for RMRA Funds: The ~60 Day Delay

The allocation of Road Maintenance and Rehabilitation Account (RMRA) revenues to cities and counties takes many weeks. It takes the State Controller's Office roughly 30 to 60 days from the time of revenue collection by the state, through the various statutory set asides to distribute the funds to cities and counties in monthly allocations. Consequently, the estimates shown in this report are for revenues collected for July through June are not received on a cash basis by local agencies until September through August. That is, for example, the FY2022-23 figure for your agency is revenues collected in and for July 2022 through June 2023 but distributed in monthly allocations September 2022 through August 2023. Cities and counties thus have two choices in the budgeting and accounting of RMRA revenues:

- 1) apply a 60 day accrual policy to RMRA funds (*recommended*); or
- 2) adjust RMRA budgets (especially in FY2017-18) to reflect a distributed cash basis.

Local Streets and Roads (HUTA and RMRA) Revenue Estimates for FY2025-26 and FY2026-27

We have computed revenue estimates for each city and county using a model reflecting the local allocation formulas, latest population figures used by the State Controller for allocations and estimates by the state Department of Finance (DOF) of statewide HUTA and RMRA tax revenues provided with the **Governor's May Revision of his Proposed 2026-27 Budget (released May 14, 2026)** and analyses of SB1(Beall), The Road Repair and Accountability Act of 2017. Compared to their January 2026 projections for 2025-26, DOF statewide revenue estimates show a slight (0.5 percent) downward revision in their RMRA estimate and a slight (0.8 percent) downward revision in HUTA estimate for a 0.7 percent lower total LSR estimate for this current 2025-26 fiscal year.

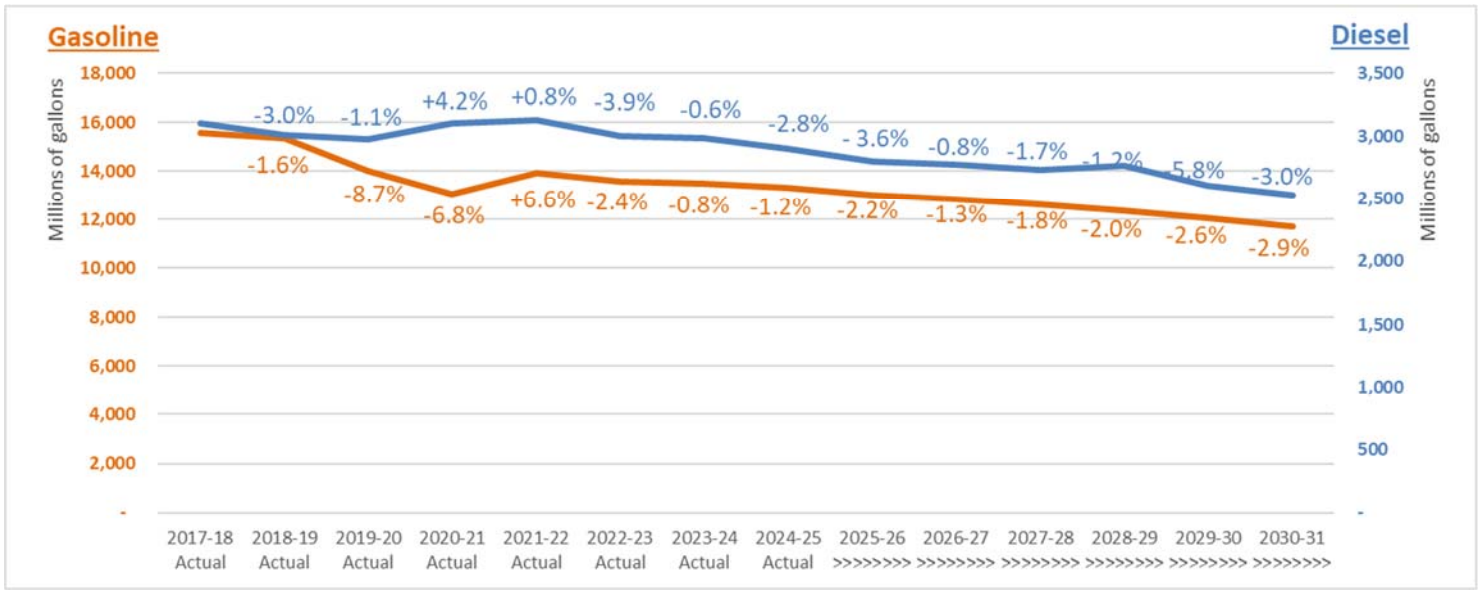
DOF's May 2026 revised 2026—27 budget year local RMRA estimate is 0.3 percent higher than in January, it's HUTA estimate 0.3 percent lower for an insignificant total LSR change.

DOF now estimates overall LSR allocations to cities and counties for the current 2025-26 year will increase 1.2 percent from prior year. For budget year FY2026-27, DOF estimates total statewide local streets and roads allocations will grow by 2.0 percent.

Fuel consumption was sharply down during the height of the COVID-19 pandemic but has largely recovered to its prior, slightly declining trajectory. Recently, fuel prices have increased steeply but the price of fuel no longer has a direct effect on local streets and roads revenues because all rates are per gallon, regardless of price.

Despite lower fuel consumption, scheduled rate increases stipulated in SB1 have kept local allocations of revenue growing at a modest pace but this growth is expected to continue to flatten. Gas tax revenue collections are forecast to increase 2 percent in 2025-26 and again in 2026-27 but to zero growth by FY 2030-31.

On the other hand, vehicle registration tax revenues from the SB1 vehicle registration tax (“Transportation Improvement Fee”) and the zero emission vehicle registration tax (“Road Improvement Fee”) are forecast to increase by about 6 percent in 2025-26 and again in 2026-27 and sustain this pace of growth over the five year forecast period.



HUTA (Highway Users Tax Account)

HUTA revenues are allocated to cities and counties pursuant to Sections 2103-2107 of the Streets and Highways Code. The per gallon excise tax rates that provide HUTA revenues are adjusted annually on July 1 as described above. Revenue changes depend on the combined effects of 1) these rate adjustments, 2) taxable gallonage, and 3) the relative change of statutory transfers including the “weight fee offset” that pays state transportation bond debt.

Sec2103-2108 HUTA allocations (not including RMRA) grew 5.5 percent in FY2024-25. But HUTA revenue growth is now flattening and will continue to decline. DOF estimates 1.1 percent HUTA growth in current year 2025-26 and 2.4 percent growth in budget year 2026-27.

RMRA (Road Maintenance and Rehabilitation Account)⁵

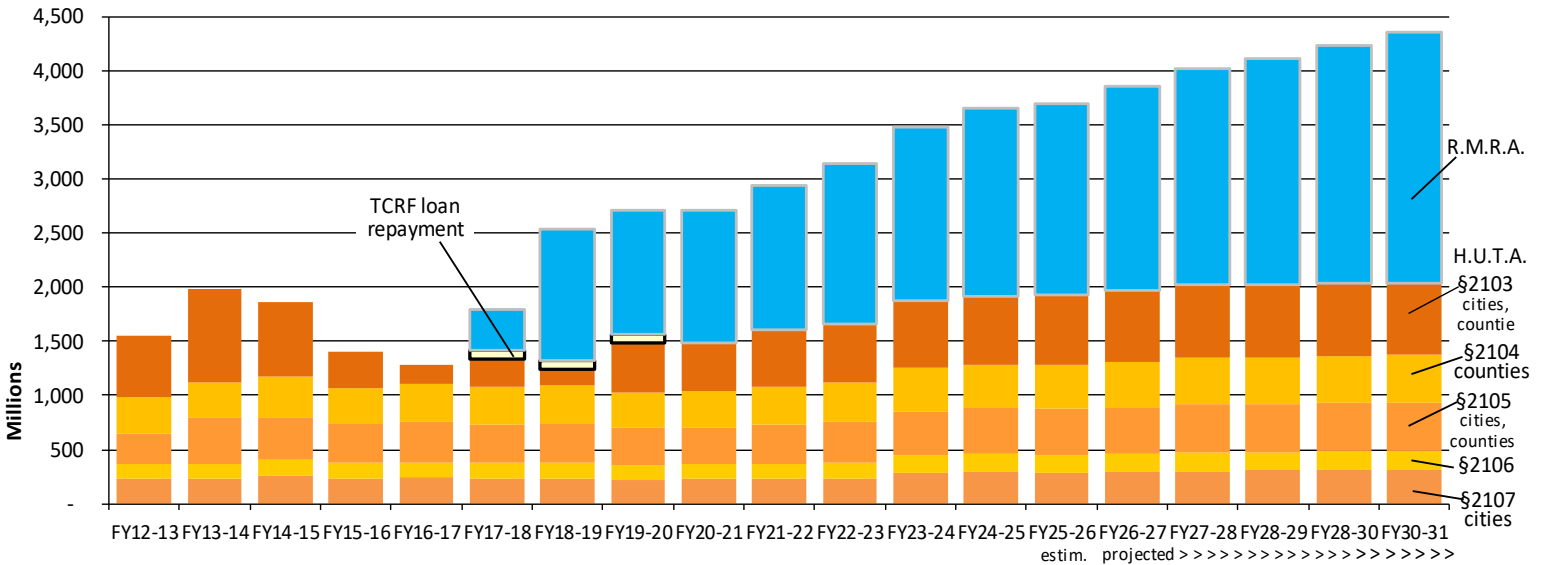
The Road Repair and Accountability Act (SB1) taxes that provide funding to cities and counties through the RMRA began on November 1, 2017 when the new per-gallon fuel excise taxes took effect. It also includes allocations from the SB1 vehicle registration tax (“Transportation Improvement Fee”) and the zero emission vehicle registration tax (“Road Improvement Fee”) which are expected to grow more robustly and are not

⁵ Note that RMRA revenues are delayed 60 days from collection to allocation. That is, the revenues for a July 1 to June 30 fiscal year are allocated September 1 through August 31. These are spendable in the fiscal year because your accounting staff “accrues” them back into your fiscal year.

included in the HUTA allocations. Additionally, various fixed-amount statutory allocations are made from the SB1 tax rates prior to the city and county allocations.

Because of this, city and county RMRA revenues are expected to grow more robustly. DOF estimates 2025-26 revenue will be 1.4 percent higher than 2024-25 actuals and that 2026-27 revenues will grow by 6.9 percent over the current year.

California Local Streets and Roads Program - State Funds to Cities and Counties



Looking Ahead: Long Term Estimates of Local Streets and Roads Funding

Since the recovery following the COVID-19 pandemic of 2020, we have seen modest year over year growth in local streets and roads revenues. In future years, as alternative fuel vehicles come more into use, fuel consumption will continue to decline. The SB1 annual cost of living adjustments will help to maintain revenues but we will see decline in revenue growth to below the rate of inflation.

Due to complicated statutory transfers from these revenues before the city and county allocations are made (including the \$1.31 billion transfer for state transportation debt service), actual growth in funding allocated to cities and counties varies somewhat among the various categories of local streets and roads allocations and will not exactly mirror total tax collections. Taking all these factors into account, for the purposes of long-term transportation program planning, we estimate transportation allocations to cities and counties will increase in outyears at the following growth rates:

	<u>2025-26</u>	<u>2026-27</u>	<u>2027-28</u>	<u>2028-29</u>	<u>2029-30</u>	<u>2030-31</u>
HUTA 2103	2.1%	2.8%	1.7%	-0.6%	-0.4%	-0.9%
HUTA 2104	2.0%	2.2%	2.3%	0.9%	0.8%	0.4%
HUTA 2105	-0.7%	2.2%	2.3%	0.9%	0.8%	0.4%
HUTA 2106	-0.1%	2.2%	2.3%	0.9%	0.8%	0.4%
HUTA 2107	-2.6%	2.2%	2.3%	0.9%	0.8%	0.4%
RMRA	1.4%	6.9%	5.9%	4.7%	5.3%	5.3%

- A) Local Streets and Roads - Projected Individual City Revenues – FY2025-26
- B) Local Streets and Roads - Projected Individual City Revenues – FY2026-27
- C) Local Streets and Roads - Projected Individual County Revenues – FY2025-26 (from CSAC)
- D) Local Streets and Roads - Projected Individual County Revenues – FY2026-27 (from CSAC)

Local Streets and Roads - Projected FY2025-26 Revenues

Based on State Dept of Finance statewide revenue projections

Estimated May 2026

	Highway Users Tax Acct (HUTA) ⁽¹⁾ Streets & Highways Code					TOTAL HUTA	Road Mntnc Rehab Acct	TOTAL
	Sec2103 ⁽³⁾	Sec2105 ⁽³⁾	Sec2106 ⁽³⁾	Sec2107 ⁽³⁾	Sec2107.5 ⁽⁴⁾			
ALAMEDA COUNTY								
ALAMEDA	761,190	500,283	281,652	668,187	7,500	2,218,811	2,080,576	4,299,387
ALBANY	203,938	134,036	78,974	179,020	5,000	600,967	557,427	1,158,394
BERKELEY	1,236,360	812,583	454,476	1,085,300	10,000	3,598,719	3,379,369	6,978,088
DUBLIN	719,489	472,876	266,485	631,581	7,500	2,097,931	1,966,594	4,064,525
EMERYVILLE	129,764	85,286	51,997	113,910	3,000	383,957	354,688	738,645
FREMONT	2,240,789	1,472,733	819,796	1,967,008	10,000	6,510,326	6,124,797	12,635,122
HAYWARD	1,580,071	1,038,483	579,486	1,387,016	10,000	4,595,056	4,318,840	8,913,896
LIVERMORE	845,410	555,636	312,283	742,117	7,500	2,462,946	2,310,777	4,773,722
NEWARK	470,913	309,502	176,075	413,376	6,000	1,375,866	1,287,155	2,663,021
OAKLAND	4,172,460	2,742,300	1,522,363	3,662,665	10,000	12,109,788	11,404,672	23,514,460
PIEDMONT	108,543	71,339	44,278	95,281	3,000	322,441	296,683	619,125
PLEASANTON	768,742	505,247	284,399	674,816	7,500	2,240,703	2,101,218	4,341,921
SAN LEANDRO	875,859	575,648	323,358	768,846	7,500	2,551,212	2,394,005	4,945,217
UNION CITY	675,187	443,759	250,372	592,692	7,500	1,969,511	1,845,504	3,815,014
ALPINE COUNTY								
AMADOR COUNTY								
AMADOR	1,927	1,266	5,721	1,691	1,000	11,605	5,266	16,871
IONE	87,052	57,214	46,421	76,416	2,000	269,103	237,942	507,045
JACKSON	48,463	31,852	27,971	42,542	2,000	152,827	132,465	285,292
PLYMOUTH	10,808	7,103	9,967	9,488	1,000	38,367	29,542	67,909
SUTTER CREEK	25,469	16,739	16,977	22,357	1,000	82,543	69,616	152,159
BUTTE COUNTY								
BIGGS	19,006	12,491	12,250	16,684	1,000	61,430	51,949	113,379
CHICO	1,096,674	720,776	434,682	962,681	10,000	3,224,812	2,997,561	6,222,374
GRIDLEY	70,570	46,382	32,463	61,948	2,000	213,363	192,892	406,254
OROVILLE	192,744	126,679	80,353	169,194	4,000	572,971	526,832	1,099,802
PARADISE	106,809	70,199	46,668	93,759	3,000	320,436	291,944	612,380
CALAVERAS COUNTY								
ANGELS CAMP	35,179	23,121	29,717	30,881	1,000	119,899	96,156	216,055
COLUSA COUNTY								
COLUSA	62,960	41,380	21,563	55,268	2,000	183,171	172,091	355,263
WILLIAMS	53,838	35,384	19,134	47,260	2,000	157,617	147,157	304,774

Local Streets and Roads - Projected FY2025-26 Revenues

Based on State Dept of Finance statewide revenue projections

Estimated May 2026

	Highway Users Tax Acct (HUTA) ⁽¹⁾ Streets & Highways Code					TOTAL HUTA	Road Mntnc Rehab Acct	TOTAL
	Sec2103 ⁽³⁾	Sec2105 ⁽³⁾	Sec2106 ⁽³⁾	Sec2107 ⁽³⁾	Sec2107.5 ⁽⁴⁾			
CONTRA COSTA COUNTY								
ANTIOCH	1,124,937	739,351	442,065	987,491	10,000	3,303,844	3,074,813	6,378,657
BRENTWOOD	633,333	416,250	250,978	555,951	7,500	1,864,012	1,731,101	3,595,113
CLAYTON	106,578	70,047	46,227	93,556	3,000	319,409	291,312	610,721
CONCORD	1,209,118	794,679	474,787	1,061,387	10,000	3,549,971	3,304,908	6,854,879
DANVILLE	420,639	276,460	168,303	369,245	6,000	1,240,646	1,149,741	2,390,387
EL CERRITO	250,252	164,475	102,074	219,676	6,000	742,478	684,020	1,426,498
HERCULES	252,622	166,033	102,995	221,756	6,000	749,406	690,497	1,439,904
LAFAYETTE	244,916	160,968	99,999	214,992	6,000	726,875	669,434	1,396,308
MARTINEZ	361,608	237,663	145,358	317,427	6,000	1,068,056	988,392	2,056,448
MORAGA	166,678	109,547	69,588	146,313	4,000	496,125	455,583	951,709
OAKLEY	451,069	296,460	180,131	395,957	6,000	1,329,617	1,232,916	2,562,533
ORINDA	188,043	123,589	77,893	165,068	4,000	558,593	513,983	1,072,576
PINOLE	182,398	119,879	75,699	160,113	4,000	542,089	498,554	1,040,643
PITTSBURG	735,701	483,531	290,768	645,812	7,500	2,163,313	2,010,907	4,174,220
PLEASANT HILL	332,450	218,499	134,024	291,831	6,000	982,803	908,692	1,891,495
RICHMOND	1,116,450	733,774	438,766	980,041	10,000	3,279,031	3,051,616	6,330,647
SAN PABLO	310,227	203,893	125,386	272,323	6,000	917,828	847,949	1,765,777
SAN RAMON	814,931	535,604	321,565	715,362	7,500	2,394,963	2,227,469	4,622,433
WALNUT CREEK	677,249	445,114	268,048	594,502	7,500	1,992,412	1,851,138	3,843,551
DEL NORTE COUNTY								
CRESCENT CITY	64,849	42,621	24,402	56,925	2,000	190,796	177,252	368,048
EL DORADO COUNTY								
PLACERVILLE	104,228	68,502	70,632	91,493	3,000	337,855	284,888	622,743
SOUTH LAKE TAHOE	206,375	135,637	135,149	1,981,445	5,000	2,463,606	564,088	3,027,694

Local Streets and Roads - Projected FY2025-26 Revenues

Based on State Dept of Finance statewide revenue projections

Estimated May 2026

	Highway Users Tax Acct (HUTA) ⁽¹⁾ Streets & Highways Code					TOTAL HUTA	Road Mntnc Rehab Acct	TOTAL
	Sec2103 ⁽³⁾	Sec2105 ⁽³⁾	Sec2106 ⁽³⁾	Sec2107 ⁽³⁾	Sec2107.5 ⁽⁴⁾			
FRESNO COUNTY								
CLOVIS	1,243,806	817,477	417,633	1,091,837	10,000	3,580,753	3,399,722	6,980,475
COALINGA	173,758	114,200	62,472	152,528	4,000	506,958	474,936	981,894
FIREBAUGH	83,941	55,169	32,661	73,685	2,000	247,456	229,437	476,893
FOWLER	73,855	48,540	29,313	64,832	2,000	218,541	201,870	420,411
FRESNO	5,365,819	3,526,622	1,785,773	4,710,218	20,000	15,408,432	14,666,505	30,074,936
HURON	66,775	43,887	26,963	58,616	2,000	198,242	182,518	380,760
KERMAN	168,912	111,016	60,864	148,275	4,000	493,067	461,692	954,758
KINGSBURG	127,973	84,109	47,276	112,337	3,000	374,694	349,791	724,484
MENDOTA	122,434	80,468	45,437	107,475	3,000	358,814	334,651	693,465
ORANGE COVE	93,603	61,519	35,868	82,166	2,000	275,156	255,846	531,002
PARLIER	141,112	92,744	51,637	123,871	3,000	412,364	385,704	798,068
REEDLEY	256,263	168,426	89,857	224,953	6,000	745,499	700,450	1,445,949
SANGER	260,444	171,174	91,244	228,623	6,000	757,485	711,877	1,469,362
SAN JOAQUIN	35,622	23,412	16,623	31,270	1,000	107,928	97,367	205,296
SELMA	238,057	156,460	83,814	208,971	5,000	692,302	650,687	1,342,989
GLENN COUNTY								
ORLAND	83,845	55,106	30,780	73,600	2,000	245,330	229,174	474,504
WILLOWS	62,373	40,994	24,127	54,752	2,000	184,245	170,485	354,730
HUMBOLDT COUNTY								
ARCATA	183,034	120,297	81,112	160,671	4,000	549,115	500,291	1,049,406
BLUE LAKE	11,608	7,629	9,640	10,189	1,000	40,066	31,727	71,793
EUREKA	259,818	170,762	113,126	228,073	6,000	777,779	710,166	1,487,945
FERNDALE	13,428	8,826	10,399	11,788	1,000	45,440	36,704	82,144
FORTUNA	120,700	79,329	55,123	105,953	3,000	364,105	329,912	694,016
RIO DELL	32,655	21,462	18,415	28,666	1,000	102,198	89,258	191,456
TRINIDAD	2,957	1,944	6,033	2,596	1,000	14,530	8,083	22,613
IMPERIAL COUNTY								
BRAWLEY	278,891	183,298	109,754	244,816	6,000	822,758	762,298	1,585,057
CALEXICO	386,018	253,706	150,068	338,854	6,000	1,134,646	1,055,111	2,189,758
CALIPATRIA	62,941	41,367	28,486	55,251	2,000	190,046	172,038	362,084
EL CENTRO	443,180	291,275	171,580	389,032	6,000	1,301,065	1,211,352	2,512,417
HOLTVILLE	54,763	35,992	25,409	48,072	2,000	166,236	149,685	315,920
IMPERIAL	220,265	144,767	87,691	193,353	5,000	651,077	602,056	1,253,132
WESTMORLAND	20,075	13,194	12,355	17,622	1,000	64,246	54,871	119,117
INYO COUNTY								
BISHOP	37,135	24,406	19,966	32,598	1,000	115,104	101,501	216,605

Local Streets and Roads - Projected FY2025-26 Revenues

Based on State Dept of Finance statewide revenue projections

Estimated May 2026

	Highway Users Tax Acct (HUTA) ⁽¹⁾ Streets & Highways Code					TOTAL HUTA	Road Mntnc Rehab Acct	TOTAL
	Sec2103 ⁽³⁾	Sec2105 ⁽³⁾	Sec2106 ⁽³⁾	Sec2107 ⁽³⁾	Sec2107.5 ⁽⁴⁾			
KERN COUNTY								
ARVIN	192,571	126,565	58,310	169,042	4,000	550,488	526,358	1,076,846
BAKERSFIELD	4,038,466	2,654,235	1,126,979	3,545,043	10,000	11,374,723	11,038,425	22,413,149
CALIFORNIA CITY	144,666	95,080	44,999	126,991	4,000	415,737	395,420	811,157
DELANO	508,914	334,478	146,213	446,735	7,500	1,443,840	1,391,026	2,834,867
MARICOPA	9,883	6,496	7,546	8,676	1,000	33,601	27,014	60,615
MCFARLAND	136,912	89,984	42,844	120,184	3,000	392,924	374,225	767,148
RIDGECREST	273,439	179,714	80,781	240,030	6,000	779,964	747,396	1,527,360
SHAFTER	225,939	148,496	67,582	198,334	5,000	645,351	617,564	1,262,915
TAFT	82,563	54,264	27,742	72,476	2,000	239,045	225,672	464,717
TEHACHAPI	125,622	82,564	39,707	110,274	3,000	361,167	343,366	704,533
WASCO	261,176	171,655	77,374	229,265	6,000	745,470	713,878	1,459,348
KINGS COUNTY								
AVENAL	131,913	86,698	47,287	115,795	3,000	384,693	360,559	745,252
CORCORAN	208,321	136,916	71,897	182,868	5,000	605,001	569,407	1,174,408
HANFORD	589,898	387,704	194,797	517,824	7,500	1,697,722	1,612,380	3,310,103
LEMOORE	266,754	175,321	90,717	234,161	6,000	772,953	729,123	1,502,076
LAKE COUNTY								
CLEARLAKE	162,507	106,806	61,369	142,651	4,000	477,333	444,183	921,515
LAKEPORT	48,415	31,820	21,653	42,499	2,000	146,388	132,333	278,721
LASSEN COUNTY								
SUSANVILLE	156,370	102,773	48,989	161,990	4,000	474,122	427,411	901,533
LOS ANGELES COUNTY								
AGOURA HILLS	194,892	128,091	76,554	171,080	5,000	575,617	532,703	1,108,320
ALHAMBRA	795,878	523,081	297,820	698,637	7,500	2,322,916	2,175,389	4,498,305
ARCADIA	547,889	360,094	206,518	480,947	7,500	1,602,947	1,497,556	3,100,504
ARTESIA	157,950	103,811	62,953	138,652	4,000	467,366	431,729	899,094
AVALON	33,166	21,798	17,011	29,114	1,000	102,088	90,653	192,742
AZUSA	484,042	318,131	183,011	424,902	7,500	1,417,586	1,323,043	2,740,629
BALDWIN PARK	693,914	456,067	260,280	609,131	7,500	2,026,891	1,896,689	3,923,580
BELL	328,808	216,106	125,858	288,634	6,000	965,407	898,739	1,864,146
BELLFLOWER	759,610	499,245	284,467	666,800	7,500	2,217,622	2,076,258	4,293,879
BELL GARDENS	380,412	250,021	144,857	333,933	6,000	1,115,223	1,039,788	2,155,010
BEVERLY HILLS	314,985	207,020	120,769	276,500	6,000	925,275	860,956	1,786,231
BRADBURY	8,862	5,825	8,063	7,779	1,000	31,529	24,223	55,752
BURBANK	1,032,365	678,510	384,888	906,229	10,000	3,011,992	2,821,784	5,833,776
CALABASAS	223,723	147,040	87,169	196,389	5,000	659,321	611,508	1,270,829
CARSON	903,708	593,952	337,520	793,292	7,500	2,635,972	2,470,124	5,106,096
CERRITOS	475,488	312,509	179,862	417,393	6,000	1,391,252	1,299,662	2,690,914
CLAREMONT	369,267	242,696	140,754	324,149	6,000	1,082,866	1,009,324	2,092,190
COMMERCE	119,207	78,347	48,689	104,642	3,000	353,885	325,830	679,715
COMPTON	925,632	608,361	345,592	812,538	7,500	2,699,624	2,530,051	5,229,674

Local Streets and Roads - Projected FY2025-26 Revenues

Based on State Dept of Finance statewide revenue projections

Estimated May 2026

	Highway Users Tax Acct (HUTA) ⁽¹⁾ Streets & Highways Code					TOTAL HUTA	Road Mntnc Rehab Acct	TOTAL
	Sec2103 ⁽³⁾	Sec2105 ⁽³⁾	Sec2106 ⁽³⁾	Sec2107 ⁽³⁾	Sec2107.5 ⁽⁴⁾			
COVINA	494,166	324,785	186,738	433,789	7,500	1,446,979	1,350,715	2,797,694
CUDAHY	219,369	144,178	85,566	192,567	5,000	646,680	599,607	1,246,287
CULVER CITY	389,505	255,998	148,205	341,915	6,000	1,141,623	1,064,643	2,206,266
DIAMOND BAR	529,375	347,925	199,701	464,695	7,500	1,549,196	1,446,951	2,996,147
DOWNEY	1,097,358	721,226	408,817	963,281	10,000	3,200,681	2,999,431	6,200,112
DUARTE	228,742	150,338	89,017	200,794	5,000	673,891	625,226	1,299,117
EL MONTE	1,051,409	691,026	391,900	922,947	10,000	3,067,281	2,873,838	5,941,119
EL SEGUNDO	166,774	109,610	66,202	146,397	4,000	492,983	455,847	948,830
GARDENA	586,690	385,595	220,803	515,008	7,500	1,715,596	1,603,612	3,319,209
GLENDALE	1,887,061	1,240,249	699,564	1,656,498	10,000	5,493,370	5,157,942	10,651,313
GLENDORA	505,764	332,408	191,008	443,970	7,500	1,480,650	1,382,416	2,863,067
HAWAIIAN GARDENS	134,340	88,293	54,260	117,926	3,000	397,820	367,194	765,015
HAWTHORNE	847,606	557,079	316,865	744,045	7,500	2,473,095	2,316,780	4,789,875
HERMOSA BEACH	189,864	124,786	74,703	166,666	4,000	560,019	518,959	1,078,978
HIDDEN HILLS	16,819	11,054	10,992	14,764	1,000	54,629	45,972	100,601
HUNTINGTON PARK	527,053	346,399	198,846	462,657	7,500	1,542,456	1,440,605	2,983,061
INDUSTRY	4,152	2,729	6,329	3,645	1,000	17,854	11,348	29,202
INGLEWOOD	1,045,273	686,993	389,641	917,560	10,000	3,049,467	2,857,066	5,906,533
IRWINDALE	14,536	9,554	10,152	12,760	1,000	48,001	39,732	87,733
LA CANADA FLINTRIDGE	197,869	130,047	77,650	173,693	5,000	584,259	540,839	1,125,098
LA HABRA HEIGHTS	54,464	35,796	24,852	47,810	2,000	164,922	148,868	313,791
LAKEWOOD	792,718	521,005	296,657	695,863	7,500	2,313,743	2,166,753	4,480,495
LA MIRADA	474,987	312,180	179,677	416,953	6,000	1,389,797	1,298,293	2,688,090
LANCASTER	1,712,417	1,125,466	635,264	1,503,192	10,000	4,986,339	4,680,584	9,666,923
LA PUENTE	366,126	240,632	139,598	321,393	6,000	1,073,749	1,000,741	2,074,489
LA VERNE	312,394	205,317	119,815	274,225	6,000	917,752	853,873	1,771,625
LAWNDALE	306,113	201,189	117,503	268,712	6,000	899,518	836,706	1,736,224
LOMITA	201,626	132,516	79,033	176,991	5,000	595,166	551,108	1,146,273
LONG BEACH	4,472,389	2,939,425	1,651,410	3,925,948	10,000	12,999,173	12,224,475	25,223,647
LOS ANGELES	37,554,103	24,681,996	13,831,183	32,965,708	20,000	109,052,989	102,647,419	211,700,408
LYNWOOD	660,353	434,009	247,924	579,670	7,500	1,929,456	1,804,956	3,734,412
MALIBU	103,419	67,971	42,876	90,783	3,000	308,048	282,676	590,724
MANHATTAN BEACH	341,601	224,513	130,568	299,864	6,000	1,002,546	933,705	1,936,251
MAYWOOD	242,055	159,088	93,918	212,480	6,000	713,541	661,614	1,375,154
MONROVIA	374,911	246,406	142,832	329,104	6,000	1,099,254	1,024,753	2,124,007
MONTEBELLO	604,289	397,162	227,283	530,457	7,500	1,766,691	1,651,717	3,418,408
MONTEREY PARK	588,443	386,748	221,449	516,547	7,500	1,720,686	1,608,405	3,329,091
NORWALK	996,174	654,724	371,564	874,460	10,000	2,906,922	2,722,863	5,629,785
PALMDALE	1,630,662	1,071,734	605,165	1,431,427	10,000	4,748,988	4,457,124	9,206,111
PALOS VERDES ESTATES	128,618	84,533	52,154	112,903	3,000	381,208	351,555	732,763
PARAMOUNT	515,041	338,505	194,424	452,113	7,500	1,507,582	1,407,772	2,915,354
PASADENA	1,354,681	890,348	503,556	1,189,164	10,000	3,947,749	3,702,777	7,650,526
PICO RIVERA	598,510	393,364	225,155	525,383	7,500	1,749,911	1,635,919	3,385,830

Local Streets and Roads - Projected FY2025-26 Revenues

Based on State Dept of Finance statewide revenue projections

Estimated May 2026

	Highway Users Tax Acct (HUTA) ⁽¹⁾ Streets & Highways Code					TOTAL HUTA	Road Mntnc Rehab Acct	TOTAL
	Sec2103 ⁽³⁾	Sec2105 ⁽³⁾	Sec2106 ⁽³⁾	Sec2107 ⁽³⁾	Sec2107.5 ⁽⁴⁾			
POMONA	1,474,234	968,923	547,572	1,294,111	10,000	4,294,841	4,029,555	8,324,396
RANCHO PALOS VERDES	406,594	267,229	154,497	356,916	6,000	1,191,236	1,111,352	2,302,587
REDONDO BEACH	676,430	444,576	253,843	593,783	7,500	1,976,132	1,848,900	3,825,032
ROLLING HILLS ⁽²⁾								
ROLLING HILLS ESTATES	82,313	54,099	35,105	72,256	2,000	245,773	224,988	470,761
ROSEMEAD	492,134	323,449	185,990	432,004	7,500	1,441,078	1,345,160	2,786,237
SAN DIMAS	335,243	220,335	128,227	294,283	6,000	984,088	916,327	1,900,416
SAN FERNANDO	228,222	149,996	88,825	200,338	5,000	672,381	623,804	1,296,185
SAN GABRIEL	380,036	249,774	144,719	333,603	6,000	1,114,132	1,038,761	2,152,893
SAN MARINO	120,873	79,443	49,302	106,105	3,000	358,723	330,386	689,108
SANTA CLARITA	2,238,458	1,471,201	828,938	1,964,961	10,000	6,513,558	6,118,425	12,631,983
SANTA FE SPRINGS	180,790	118,822	71,362	158,701	4,000	533,674	494,156	1,027,831
SANTA MONICA	898,506	590,533	335,605	788,726	7,500	2,620,870	2,455,906	5,076,776
SIERRA MADRE	107,657	70,756	44,436	94,503	3,000	320,353	294,261	614,614
SIGNAL HILL	113,273	74,447	46,504	99,433	3,000	336,657	309,611	646,269
SOUTH EL MONTE	188,188	123,684	74,086	165,195	4,000	555,152	514,378	1,069,530
SOUTH GATE	895,424	588,507	334,470	786,020	7,500	2,611,921	2,447,480	5,059,401
SOUTH PASADENA	259,664	170,661	100,401	227,938	6,000	764,663	709,744	1,474,408
TEMPLE CITY	352,004	231,351	134,398	308,996	6,000	1,032,750	962,141	1,994,891
TORRANCE	1,414,298	929,531	525,506	1,241,498	10,000	4,120,833	3,865,732	7,986,565
VERNON	2,033	1,336	5,548	1,784	1,000	11,701	5,556	17,256
WALNUT	273,863	179,993	105,629	240,402	6,000	805,886	748,554	1,554,440
WEST COVINA	1,055,522	693,730	393,414	926,557	10,000	3,079,223	2,885,081	5,964,304
WEST HOLLYWOOD	343,768	225,938	131,366	301,766	6,000	1,008,838	939,629	1,948,468
WESTLAKE VILLAGE	78,460	51,567	33,687	68,873	2,000	234,587	214,456	449,042
WHITTIER	846,248	556,187	316,365	742,853	7,500	2,469,152	2,313,067	4,782,219

Local Streets and Roads - Projected FY2025-26 Revenues

Based on State Dept of Finance statewide revenue projections

Estimated May 2026

	Highway Users Tax Acct (HUTA) ⁽¹⁾ Streets & Highways Code					TOTAL HUTA	Road Mntnc Rehab Acct	TOTAL
	Sec2103 ⁽³⁾	Sec2105 ⁽³⁾	Sec2106 ⁽³⁾	Sec2107 ⁽³⁾	Sec2107.5 ⁽⁴⁾			
MADERA COUNTY								
CHOWCHILLA	185,625	122,000	51,743	162,946	4,000	526,314	507,374	1,033,688
MADERA	640,037	420,657	166,660	561,837	7,500	1,796,690	1,749,427	3,546,117
MARIN COUNTY								
BELVEDERE	20,460	13,447	13,240	17,960	1,000	66,108	55,924	122,032
CORTE MADERA	98,361	64,647	45,375	86,343	3,000	297,726	268,853	566,579
FAIRFAX	73,162	48,085	34,980	64,223	2,000	222,449	199,974	422,423
LARKSPUR	125,998	82,811	56,775	110,603	3,000	379,187	344,393	723,580
MILL VALLEY	136,122	89,465	60,951	119,491	3,000	409,029	372,065	781,094
NOVATO	512,141	336,599	216,062	449,567	7,500	1,521,870	1,399,847	2,921,717
ROSS	22,502	14,789	14,082	19,753	1,000	72,127	61,506	133,634
SAN ANSELMO	123,156	80,943	55,603	108,109	3,000	370,811	336,626	707,437
SAN RAFAEL	593,356	389,976	249,564	520,859	7,500	1,761,256	1,621,833	3,383,089
SAUSALITO	68,576	45,071	33,088	60,198	2,000	208,934	187,441	396,375
TIBURON	87,977	57,822	41,091	77,228	2,000	266,118	240,469	506,588
MARIPOSA COUNTY								
MENDOCINO COUNTY								
FORT BRAGG	69,231	45,502	33,012	60,773	2,000	210,517	189,232	399,749
POINT ARENA	4,431	2,912	6,606	3,890	1,000	18,839	12,112	30,950
UKIAH	159,925	105,109	69,969	140,385	4,000	479,388	437,126	916,514
WILLITS	47,654	31,320	24,219	41,831	1,000	146,024	130,253	276,277
MERGED COUNTY								
ATWATER	306,923	201,721	94,290	269,423	6,000	878,357	838,918	1,717,275
DOS PALOS	55,823	36,689	21,076	49,002	2,000	164,590	152,581	317,170
GUSTINE	58,558	38,487	21,874	51,404	2,000	172,323	160,058	332,381
LIVINGSTON	139,108	91,427	45,360	122,112	3,000	401,008	380,228	781,236
LOS BANOS	471,009	309,565	142,134	413,461	6,000	1,342,168	1,287,419	2,629,587
MERCED	944,397	620,694	280,161	829,010	7,500	2,681,762	2,581,341	5,263,103
MODOC COUNTY								
ALTURAS	26,201	17,221	14,155	26,735	1,000	85,312	71,617	156,929
MONO COUNTY								
MAMMOTH LAKES	69,549	45,710	64,734	1,677,985	2,000	1,859,979	190,101	2,050,079

Local Streets and Roads - Projected FY2025-26 Revenues

Based on State Dept of Finance statewide revenue projections

Estimated May 2026

	Highway Users Tax Acct (HUTA) ⁽¹⁾ Streets & Highways Code					TOTAL HUTA	Road Mntnc Rehab Acct	TOTAL
	Sec2103 ⁽³⁾	Sec2105 ⁽³⁾	Sec2106 ⁽³⁾	Sec2107 ⁽³⁾	Sec2107.5 ⁽⁴⁾			
MONTEREY COUNTY								
CARMEL-BY-THE-SEA	30,517	20,057	13,536	26,788	1,000	91,898	83,413	175,311
DEL REY OAKS	15,210	9,997	9,154	13,352	1,000	48,713	41,575	90,288
GONZALES	82,342	54,118	28,372	72,281	2,000	239,113	225,067	464,180
GREENFIELD	200,219	131,592	62,117	175,756	5,000	574,685	547,264	1,121,948
KING CITY	138,174	90,813	44,355	121,292	3,000	397,634	377,674	775,308
MARINA	222,385	146,160	68,463	195,213	5,000	637,220	607,848	1,245,068
MONTEREY	274,286	180,272	83,321	240,774	6,000	784,652	749,713	1,534,365
PACIFIC GROVE	144,281	94,827	46,104	126,653	3,000	414,865	394,367	809,232
SALINAS	1,558,368	1,024,219	450,918	1,367,965	10,000	4,411,469	4,259,519	8,670,988
SAND CITY	3,593	2,361	5,829	3,154	1,000	15,937	9,821	25,758
SEASIDE	315,294	207,223	95,060	276,771	6,000	900,347	861,799	1,762,146
SOLEDAD	265,386	174,422	80,773	232,961	6,000	759,540	725,384	1,484,925
NAPA COUNTY								
AMERICAN CANYON	215,738	141,791	69,801	189,379	5,000	621,709	589,681	1,211,390
CALISTOGA	50,447	33,156	20,000	44,284	2,000	149,887	137,889	287,775
NAPA	750,593	493,319	230,951	658,885	7,500	2,141,249	2,051,613	4,192,862
SAINT HELENA	51,979	34,163	20,461	45,628	2,000	154,231	142,075	296,306
YOUNTVILLE	28,754	18,898	13,464	25,241	1,000	87,357	78,594	165,951
NEVADA COUNTY								
GRASS VALLEY	131,103	86,166	117,731	115,085	3,000	453,085	358,348	811,433
NEVADA CITY	32,251	21,197	32,580	42,310	1,000	129,338	88,152	217,490
TRUCKEE	163,065	107,173	145,262	2,489,212	4,000	2,908,712	445,710	3,354,422

Local Streets and Roads - Projected FY2025-26 Revenues

Based on State Dept of Finance statewide revenue projections

Estimated May 2026

	Highway Users Tax Acct (HUTA) ⁽¹⁾ Streets & Highways Code					TOTAL HUTA	Road Mntnc Rehab Acct	TOTAL
	Sec2103 ⁽³⁾	Sec2105 ⁽³⁾	Sec2106 ⁽³⁾	Sec2107 ⁽³⁾	Sec2107.5 ⁽⁴⁾			
ORANGE COUNTY								
ALISO VIEJO	498,925	327,913	213,933	437,966	7,500	1,486,236	1,363,722	2,849,959
ANAHEIM	3,336,432	2,192,831	1,403,322	2,928,784	10,000	9,871,369	9,119,541	18,990,910
BREA	461,415	303,259	198,210	405,039	6,000	1,373,922	1,261,194	2,635,117
BUENA PARK	811,194	533,148	344,826	712,081	7,500	2,408,749	2,217,253	4,626,002
COSTA MESA	1,083,689	712,242	459,046	951,283	10,000	3,216,259	2,962,069	6,178,328
CYPRESS	485,063	318,802	208,122	425,798	7,500	1,445,286	1,325,834	2,771,120
DANA POINT	319,224	209,806	138,608	280,221	6,000	953,859	872,541	1,826,400
FOUNTAIN VALLEY	550,288	361,670	235,462	483,053	7,500	1,637,973	1,504,112	3,142,085
FULLERTON	1,385,939	910,892	585,740	1,216,604	10,000	4,109,175	3,788,217	7,897,392
GARDEN GROVE	1,656,344	1,088,613	699,084	1,453,970	10,000	4,908,011	4,527,319	9,435,330
HUNTINGTON BEACH	1,910,440	1,255,614	805,593	1,677,020	10,000	5,658,667	5,221,845	10,880,512
IRVINE	3,069,313	2,017,270	1,291,354	2,694,301	10,000	9,082,238	8,389,417	17,471,655
LAGUNA BEACH	221,440	145,539	97,621	194,385	5,000	663,985	605,268	1,269,253
LAGUNA HILLS	302,174	198,600	131,461	265,254	6,000	903,489	825,937	1,729,426
LAGUNA NIGUEL	628,612	413,148	268,294	551,808	7,500	1,869,362	1,718,200	3,587,562
LAGUNA WOODS	170,926	112,339	76,446	150,042	4,000	513,753	467,195	980,948
LA HABRA	604,338	397,194	258,118	530,499	7,500	1,797,649	1,651,849	3,449,497
LAKE FOREST	844,215	554,851	358,667	741,068	7,500	2,506,302	2,307,512	4,813,813
LA PALMA	150,013	98,594	67,680	131,684	4,000	451,971	410,033	862,004
LOS ALAMITOS	115,652	76,011	53,278	101,522	3,000	349,463	316,115	665,578
MISSION VIEJO	901,637	592,590	382,736	791,474	7,500	2,675,938	2,464,463	5,140,401
NEWPORT BEACH	819,719	538,751	348,399	719,565	7,500	2,433,934	2,240,555	4,674,489
ORANGE	1,355,278	890,741	572,888	1,189,689	10,000	4,018,595	3,704,409	7,723,004
PLACENTIA	520,002	341,765	222,768	456,467	7,500	1,548,502	1,421,332	2,969,834
RANCHO SANTA MARGARITA	461,559	303,354	198,270	405,165	6,000	1,374,349	1,261,589	2,635,938
SAN CLEMENTE	617,496	405,842	263,634	542,050	7,500	1,836,522	1,687,815	3,524,337
SAN JUAN CAPISTRANO	340,320	223,671	147,451	298,739	6,000	1,016,181	930,203	1,946,384
SANTA ANA	3,037,486	1,996,352	1,278,013	2,666,363	10,000	8,988,214	8,302,424	17,290,638
SEAL BEACH	243,692	160,164	106,948	213,918	6,000	730,722	666,090	1,396,812
STANTON	390,632	256,739	168,540	342,904	6,000	1,164,815	1,067,723	2,232,539
TUSTIN	773,924	508,653	329,203	679,366	7,500	2,298,646	2,115,384	4,414,030
VILLA PARK	56,439	37,094	28,457	49,543	2,000	173,533	154,266	327,799
WESTMINSTER	875,956	575,712	371,972	768,931	7,500	2,600,070	2,394,268	4,994,338
YORBA LINDA	655,488	430,812	279,559	575,400	7,500	1,948,759	1,791,659	3,740,418

Local Streets and Roads - Projected FY2025-26 Revenues

Based on State Dept of Finance statewide revenue projections

Estimated May 2026

	Highway Users Tax Acct (HUTA) ⁽¹⁾ Streets & Highways Code					TOTAL HUTA	Road Mntnc Rehab Acct	TOTAL
	Sec2103 ⁽³⁾	Sec2105 ⁽³⁾	Sec2106 ⁽³⁾	Sec2107 ⁽³⁾	Sec2107.5 ⁽⁴⁾			
PLACER COUNTY								
AUBURN	132,616	87,160	58,997	116,413	3,000	398,185	362,481	760,667
COLFAX	19,256	12,656	12,669	16,903	1,000	62,485	52,633	115,118
LINCOLN	525,184	345,171	219,429	461,017	7,500	1,558,301	1,435,497	2,993,799
LOOMIS	65,571	43,096	31,597	57,559	2,000	199,823	179,227	379,050
ROCKLIN	704,857	463,259	292,857	618,737	7,500	2,087,209	1,926,599	4,013,808
ROSEVILLE	1,526,753	1,003,440	628,744	1,340,213	10,000	4,509,150	4,173,105	8,682,255
PLUMAS COUNTY								
PORTOLA	20,335	13,365	9,157	119,657	1,000	163,515	55,582	219,097
RIVERSIDE COUNTY								
BANNING	307,761	202,272	131,600	270,158	6,000	917,791	841,209	1,759,000
BEAUMONT	575,160	378,017	241,771	504,886	7,500	1,707,333	1,572,096	3,279,429
BLYTHE	180,886	118,885	79,327	158,785	4,000	541,883	494,420	1,036,303
CALIMESA	105,904	69,604	48,433	92,964	3,000	319,906	289,469	609,375
CANYON LAKE	106,540	70,022	48,695	93,522	3,000	321,779	291,207	612,986
CATHEDRAL CITY	497,548	327,007	209,794	436,757	7,500	1,478,605	1,359,957	2,838,562
COACHELLA	427,545	280,999	180,952	375,308	6,000	1,270,805	1,168,619	2,439,424
CORONA	1,533,139	1,007,638	636,466	1,345,819	10,000	4,533,062	4,190,562	8,723,624
DESERT HOT SPRINGS	320,409	210,585	136,811	281,261	6,000	955,065	875,780	1,830,845
EASTVALE	672,365	441,904	281,820	590,215	7,500	1,993,804	1,837,789	3,831,593
HEMET	885,589	582,043	369,670	777,387	7,500	2,622,188	2,420,598	5,042,786
INDIAN WELLS	46,835	30,782	24,096	41,113	1,000	143,826	128,015	271,841
INDIO	891,416	585,873	372,071	782,502	7,500	2,639,363	2,436,527	5,075,890
JURUPA VALLEY	1,020,391	670,640	425,210	895,719	10,000	3,021,959	2,789,056	5,811,016
LAKE ELSINORE	710,742	467,127	297,632	623,903	7,500	2,106,904	1,942,687	4,049,591
LA QUINTA	373,717	245,621	158,775	328,056	6,000	1,112,168	1,021,488	2,133,657
MENIFEE	1,110,824	730,076	462,469	975,103	10,000	3,288,473	3,036,240	6,324,712
MORENO VALLEY	2,030,831	1,334,740	841,520	1,782,702	10,000	5,999,793	5,550,914	11,550,707
MURRIETA	1,076,849	707,747	448,471	945,279	10,000	3,188,346	2,943,375	6,131,720
NORCO	256,504	168,584	110,482	225,164	6,000	766,735	701,108	1,467,843
PALM DESERT	500,717	329,090	211,100	439,539	7,500	1,487,945	1,368,620	2,856,565
PALM SPRINGS	428,432	281,582	181,317	376,085	6,000	1,273,416	1,171,041	2,444,458
PERRIS	782,575	514,338	327,227	686,959	7,500	2,318,599	2,139,028	4,457,627
RANCHO MIRAGE	164,915	108,388	72,746	144,765	4,000	494,815	450,765	945,580
RIVERSIDE	3,085,766	2,028,083	1,276,162	2,708,744	10,000	9,108,755	8,434,388	17,543,143
SAN JACINTO	529,712	348,147	223,046	464,991	7,500	1,573,395	1,447,872	3,021,267
TEMECULA	1,081,001	710,475	450,182	948,923	10,000	3,200,581	2,954,723	6,155,304
WILDOMAR	357,158	234,738	151,952	313,520	6,000	1,063,368	976,228	2,039,596

Local Streets and Roads - Projected FY2025-26 Revenues

Based on State Dept of Finance statewide revenue projections

Estimated May 2026

	Highway Users Tax Acct (HUTA) ⁽¹⁾ Streets & Highways Code					TOTAL HUTA	Road Mntnc Rehab Acct	TOTAL
	Sec2103 ⁽³⁾	Sec2105 ⁽³⁾	Sec2106 ⁽³⁾	Sec2107 ⁽³⁾	Sec2107.5 ⁽⁴⁾			
SACRAMENTO COUNTY								
CITRUS HEIGHTS	845,005	555,370	366,982	741,762	7,500	2,516,619	2,309,671	4,826,289
ELK GROVE	1,761,294	1,157,590	759,717	1,546,097	10,000	5,234,697	4,814,181	10,048,879
FOLSOM	891,783	586,114	387,031	782,824	7,500	2,655,251	2,437,528	5,092,779
GALT	251,341	165,191	112,528	220,632	6,000	755,692	686,995	1,442,688
ISLETON	7,658	5,033	8,082	6,722	1,000	28,496	20,932	49,428
RANCHO CORDOVA	823,139	540,998	357,609	722,567	7,500	2,451,813	2,249,902	4,701,715
SACRAMENTO	5,085,955	3,342,684	2,184,716	4,464,548	20,000	15,097,903	13,901,547	28,999,450
SAN BENITO COUNTY								
HOLLISTER	418,953	275,352	174,709	367,765	6,000	1,242,779	1,145,133	2,387,912
SAN JUAN BAUTISTA	20,075	13,194	12,942	17,622	1,000	64,833	54,871	119,704
SAN BERNARDINO COUNTY								
ADELANTO	357,861	235,200	147,636	314,137	6,000	1,060,834	978,150	2,038,984
APPLE VALLEY	731,299	480,638	296,688	641,948	7,500	2,158,073	1,998,874	4,156,947
BARSTOW	245,966	161,658	102,974	215,913	6,000	732,511	672,303	1,404,815
BIG BEAR LAKE	48,559	31,915	24,182	691,969	2,000	798,625	132,728	931,354
CHINO	917,107	602,758	370,852	805,054	7,500	2,703,271	2,506,749	5,210,020
CHINO HILLS	755,005	496,218	306,151	662,758	7,500	2,227,632	2,063,672	4,291,304
COLTON	517,834	340,341	211,487	454,565	7,500	1,531,727	1,415,408	2,947,134
FONTANA	2,111,256	1,387,598	847,481	1,853,301	10,000	6,209,636	5,770,741	11,980,377
GRAND TERRACE	126,441	83,102	55,267	110,992	3,000	378,803	345,604	724,407
HESPERIA	980,549	644,455	396,174	860,745	10,000	2,891,923	2,680,156	5,572,079
HIGHLAND	549,921	361,429	224,294	482,732	7,500	1,625,877	1,503,112	3,128,988
LOMA LINDA	243,924	160,316	102,159	214,121	6,000	726,519	666,722	1,393,241
MONTCLAIR	366,213	240,689	150,969	321,469	6,000	1,085,340	1,000,978	2,086,318
NEEDLES	47,432	31,174	23,732	41,637	1,000	144,975	129,648	274,623
ONTARIO	1,776,340	1,167,479	713,803	1,559,305	10,000	5,226,928	4,855,308	10,082,236
RANCHO CUCAMONGA	1,695,309	1,114,222	681,460	1,488,174	10,000	4,989,165	4,633,823	9,622,988
REDLANDS	707,901	465,259	287,349	621,409	7,500	2,089,418	1,934,920	4,024,338
RIALTO	1,016,894	668,342	410,680	892,649	10,000	2,998,565	2,779,498	5,778,064
SAN BERNARDINO	2,149,287	1,412,594	862,660	1,886,685	10,000	6,321,225	5,874,690	12,195,915
TWENTYNINE PALMS	272,389	179,024	113,520	239,108	6,000	810,042	744,526	1,554,567
UPLAND	762,346	501,043	309,080	669,201	7,500	2,249,170	2,083,735	4,332,905
VICTORVILLE	1,358,360	892,766	546,972	1,192,395	10,000	4,000,493	3,712,835	7,713,328
YUCAIPA	528,247	347,185	215,643	463,706	7,500	1,562,281	1,443,870	3,006,151
YUCCA VALLEY	212,183	139,455	89,490	186,259	5,000	632,387	579,965	1,212,352

Local Streets and Roads - Projected FY2025-26 Revenues

Based on State Dept of Finance statewide revenue projections

Estimated May 2026

	Highway Users Tax Acct (HUTA) ⁽¹⁾ Streets & Highways Code					TOTAL HUTA	Road Mntnc Rehab Acct	TOTAL
	Sec2103 ⁽³⁾	Sec2105 ⁽³⁾	Sec2106 ⁽³⁾	Sec2107 ⁽³⁾	Sec2107.5 ⁽⁴⁾			
SAN DIEGO COUNTY								
CARLSBAD	1,120,958	736,737	477,568	983,998	10,000	3,329,262	3,063,939	6,393,200
CHULA VISTA	2,710,700	1,781,576	1,148,048	2,379,504	10,000	8,029,828	7,409,214	15,439,042
CORONADO	226,411	148,806	100,290	198,748	5,000	679,255	618,854	1,298,109
DEL MAR	38,059	25,014	20,852	33,409	1,000	118,335	104,029	222,363
EL CAJON	1,024,177	673,128	436,750	899,042	10,000	3,043,097	2,799,404	5,842,501
ENCINITAS	596,814	392,249	256,509	523,895	7,500	1,776,967	1,631,285	3,408,252
ESCONDIDO	1,457,348	957,825	619,442	1,279,288	10,000	4,323,902	3,983,399	8,307,301
IMPERIAL BEACH	256,013	168,261	112,774	224,733	6,000	767,782	699,765	1,467,547
LA MESA	586,719	385,614	252,251	515,033	7,500	1,747,117	1,603,691	3,350,809
LEMON GROVE	271,291	178,303	119,218	238,144	6,000	812,955	741,524	1,554,479
NATIONAL CITY	568,002	373,313	244,357	498,603	7,500	1,691,776	1,552,533	3,244,308
OCEANSIDE	1,679,395	1,103,763	713,031	1,474,205	10,000	4,980,454	4,590,326	9,570,780
POWAY	485,295	318,954	209,475	426,001	7,500	1,447,224	1,326,466	2,773,690
SAN DIEGO	13,572,111	8,920,112	5,728,888	11,913,858	20,000	40,154,969	37,096,938	77,251,907
SAN MARCOS	935,574	614,895	399,382	821,264	7,500	2,778,614	2,557,223	5,335,837
SANTEE	574,639	377,675	247,156	504,429	7,500	1,711,400	1,570,674	3,282,074
SOLANA BEACH	125,092	82,216	57,558	109,809	3,000	377,675	341,918	719,593
VISTA	978,690	643,233	417,566	859,113	7,500	2,906,102	2,675,075	5,581,177
SAN FRANCISCO COUNTY								
SAN FRANCISCO	8,418,794	5,533,154	2,091,748	7,390,178	20,000	23,453,874	23,011,267	46,465,141
SAN JOAQUIN COUNTY								
ESCALON	71,707	47,129	33,569	62,946	2,000	217,350	195,999	413,349
LATHROP	371,790	244,355	153,960	326,365	6,000	1,102,470	1,016,222	2,118,693
LODI	646,298	424,772	264,032	567,333	7,500	1,909,995	1,766,541	3,676,536
MANTECA	902,918	593,432	367,046	792,599	7,500	2,663,495	2,467,965	5,131,460
MOUNTAIN HOUSE	277,379	182,304	118,564	243,488	5,000	826,735	758,165	1,584,899
RIPON	154,010	101,222	66,588	135,193	4,000	461,013	420,960	881,973
STOCKTON	3,090,967	2,031,502	1,244,880	2,713,310	10,000	9,090,660	8,448,606	17,539,267
TRACY	946,093	621,808	384,368	830,498	7,500	2,790,267	2,585,975	5,376,242
SAN LUIS OBISPO COUNTY								
ARROYO GRANDE	176,734	116,157	91,206	155,141	4,000	543,238	483,072	1,026,309
ATASCADERO	296,692	194,998	149,854	260,442	6,000	907,986	810,956	1,718,942
EL PASO DE ROBLES	302,308	198,689	152,600	265,372	6,000	924,969	826,306	1,751,275
GROVER BEACH	123,195	80,968	65,030	108,143	3,000	380,336	336,731	717,067
MORRO BAY	101,694	66,837	54,519	89,269	3,000	315,319	277,963	593,282
PISMO BEACH	77,583	50,991	42,731	68,104	2,000	241,408	212,060	453,468
SAN LUIS OBISPO	477,155	313,604	238,083	418,856	6,000	1,453,697	1,304,217	2,757,914

Local Streets and Roads - Projected FY2025-26 Revenues

Based on State Dept of Finance statewide revenue projections

Estimated May 2026

	Highway Users Tax Acct (HUTA) ⁽¹⁾ Streets & Highways Code					TOTAL HUTA	Road Mntnc Rehab Acct	TOTAL
	Sec2103 ⁽³⁾	Sec2105 ⁽³⁾	Sec2106 ⁽³⁾	Sec2107 ⁽³⁾	Sec2107.5 ⁽⁴⁾			
SAN MATEO COUNTY								
ATHERTON	69,183	45,470	33,867	60,730	2,000	211,251	189,100	400,351
BELMONT	271,705	178,575	118,957	238,508	6,000	813,744	742,656	1,556,401
BRISBANE	46,729	30,712	24,433	41,020	1,000	143,894	127,726	271,620
BURLINGAME	303,936	199,759	132,499	266,801	6,000	908,995	830,756	1,739,751
COLMA	14,276	9,383	10,798	12,532	1,000	47,988	39,021	87,009
DALY CITY	1,009,872	663,727	429,098	886,485	10,000	2,999,181	2,760,304	5,759,485
EAST PALO ALTO	289,314	190,148	126,355	253,965	6,000	865,782	790,787	1,656,569
FOSTER CITY	324,493	213,269	141,136	284,846	6,000	969,744	886,943	1,856,688
HALF MOON BAY	113,196	74,397	52,359	99,366	3,000	342,317	309,401	651,718
HILLSBOROUGH	109,555	72,004	50,829	96,169	3,000	331,557	299,448	631,005
MENLO PARK	328,914	216,175	142,994	288,727	6,000	982,811	899,029	1,881,839
MILLBRAE	224,648	147,647	99,186	197,201	6,000	673,682	614,036	1,287,718
PACIFICA	372,551	244,855	161,328	327,033	6,000	1,111,767	1,018,302	2,130,069
PORTOLA VALLEY	42,741	28,091	22,758	37,519	1,000	132,109	116,825	248,934
REDWOOD CITY	803,902	528,355	342,560	705,680	7,500	2,387,997	2,197,322	4,585,318
SAN BRUNO	423,856	278,574	182,883	372,069	6,000	1,263,383	1,158,535	2,421,917
SAN CARLOS	296,095	194,605	129,205	259,918	6,000	885,823	809,323	1,695,146
SAN MATEO	1,018,358	669,304	432,664	893,934	10,000	3,024,261	2,783,501	5,807,761
SOUTH SAN FRANCISCO	638,255	419,486	272,963	560,272	7,500	1,898,476	1,744,556	3,643,031
WOODSIDE	51,122	33,599	26,279	44,876	2,000	157,875	139,732	297,607
SANTA BARBARA COUNTY								
BUELLTON	49,551	32,567	21,398	43,497	2,000	149,014	135,440	284,454
CARPINTERIA	126,586	83,197	47,202	111,119	3,000	371,104	345,999	717,103
GOLETA	315,448	207,324	110,465	276,906	6,000	916,143	862,220	1,778,362
GUADALUPE	85,261	56,037	33,359	74,843	2,000	251,500	233,044	484,544
LOMPOC	429,096	282,019	148,533	376,669	6,000	1,242,317	1,172,858	2,415,175
SANTA BARBARA	841,990	553,388	286,839	739,115	7,500	2,428,832	2,301,429	4,730,262
SANTA MARIA	1,080,885	710,399	366,861	948,822	10,000	3,116,968	2,954,407	6,071,375
SOLVANG	56,006	36,809	23,560	49,163	2,000	167,537	153,081	320,618

Local Streets and Roads - Projected FY2025-26 Revenues

Based on State Dept of Finance statewide revenue projections

Estimated May 2026

	Highway Users Tax Acct (HUTA) ⁽¹⁾ Streets & Highways Code					TOTAL HUTA	Road Mntnc Rehab Acct	TOTAL
	Sec2103 ⁽³⁾	Sec2105 ⁽³⁾	Sec2106 ⁽³⁾	Sec2107 ⁽³⁾	Sec2107.5 ⁽⁴⁾			
SANTA CLARA COUNTY								
CAMPBELL	421,217	276,840	169,953	369,752	6,000	1,243,761	1,151,320	2,395,082
CUPERTINO	581,228	382,006	232,691	510,213	7,500	1,713,638	1,588,684	3,302,322
GILROY	599,213	393,826	239,743	526,000	7,500	1,766,282	1,637,841	3,404,123
LOS ALTOS	305,555	200,822	124,604	268,222	6,000	905,202	835,179	1,740,382
LOS ALTOS HILLS	82,342	54,118	37,085	72,281	2,000	247,826	225,067	472,893
LOS GATOS	322,171	211,743	131,119	282,808	6,000	953,842	880,598	1,834,440
MILPITAS	789,077	518,612	314,186	692,667	7,500	2,322,041	2,156,800	4,478,841
MONTE SERENO	35,035	23,026	18,537	30,754	1,000	108,352	95,761	204,113
MORGAN HILL	448,882	295,023	180,800	394,037	6,000	1,324,743	1,226,939	2,551,682
MOUNTAIN VIEW	833,369	547,722	331,552	731,547	7,500	2,451,690	2,277,864	4,729,554
PALO ALTO	662,684	435,541	264,629	581,717	7,500	1,952,071	1,811,328	3,763,398
SAN JOSE	9,752,822	6,409,928	3,828,743	8,561,213	20,000	28,572,706	26,657,593	55,230,298
SANTA CLARA	1,296,460	852,083	513,123	1,138,057	10,000	3,809,723	3,543,640	7,353,363
SARATOGA	299,679	196,960	122,300	263,064	6,000	888,002	819,118	1,707,120
SUNNYVALE	1,538,110	1,010,905	607,871	1,350,182	10,000	4,517,068	4,204,148	8,721,215
SANTA CRUZ COUNTY								
CAPITOLA	94,970	62,418	39,316	83,367	2,000	282,072	259,585	541,657
SANTA CRUZ	623,199	409,590	231,296	547,056	7,500	1,818,640	1,703,402	3,522,042
SCOTTS VALLEY	116,259	76,410	47,053	102,054	3,000	344,777	317,774	662,550
WATSONVILLE	499,070	328,008	186,182	438,093	7,500	1,458,852	1,364,117	2,822,969
SHASTA COUNTY								
ANDERSON	107,609	70,725	59,314	94,461	3,000	335,109	294,129	629,238
REDDING	903,043	593,515	462,279	792,709	7,500	2,759,046	2,468,307	5,227,353
SHASTA LAKE	99,623	65,476	55,269	87,451	3,000	310,819	272,302	583,121
SIERRA COUNTY								
LOYALTON	7,109	4,672	6,416	6,240	1,000	25,438	19,431	44,870
SISKIYOU COUNTY								
DORRIS	8,265	5,432	8,778	7,255	1,000	30,730	22,591	53,321
DUNSMUIR	16,405	10,782	12,695	50,220	1,000	91,102	44,840	135,942
ETNA	6,589	4,330	7,971	5,784	1,000	25,674	18,010	43,684
FORT JONES	6,685	4,394	8,017	5,868	1,000	25,965	18,273	44,238
MONTAGUE	11,839	7,781	10,498	10,892	1,000	42,010	32,359	74,369
MOUNT SHASTA	31,220	20,519	19,826	69,209	1,000	141,773	85,335	227,108
TULELAKE	8,670	5,698	8,972	7,610	1,000	31,950	23,697	55,647
WEED	28,118	18,480	18,333	79,068	1,000	144,999	76,856	221,856
YREKA	75,897	49,883	41,328	81,835	2,000	250,943	207,452	458,395

Local Streets and Roads - Projected FY2025-26 Revenues

Based on State Dept of Finance statewide revenue projections

Estimated May 2026

	Highway Users Tax Acct (HUTA) ⁽¹⁾ Streets & Highways Code					TOTAL HUTA	Road Mntnc Rehab Acct	TOTAL
	Sec2103 ⁽³⁾	Sec2105 ⁽³⁾	Sec2106 ⁽³⁾	Sec2107 ⁽³⁾	Sec2107.5 ⁽⁴⁾			
SOLANO COUNTY								
BENICIA	260,877	171,459	111,830	229,003	6,000	779,169	713,062	1,492,231
DIXON	194,334	127,723	84,529	170,590	4,000	581,176	531,176	1,112,352
FAIRFIELD	1,162,880	764,290	481,892	1,020,799	10,000	3,439,861	3,178,526	6,618,387
RIO VISTA	99,585	65,451	45,656	87,417	3,000	301,109	272,197	573,306
SUISUN CITY	283,727	186,476	121,204	249,061	6,000	846,467	775,516	1,621,983
VACAVILLE	993,929	653,249	412,577	872,490	10,000	2,942,246	2,716,728	5,658,974
VALLEJO	1,213,126	797,313	502,506	1,064,905	10,000	3,587,849	3,315,861	6,903,711
SONOMA COUNTY								
CLOVERDALE	86,783	57,037	40,911	76,179	2,000	262,910	237,205	500,114
COTATI	73,027	47,996	35,187	64,104	2,000	222,314	199,606	421,920
HEALDSBURG	108,929	71,592	50,126	95,620	3,000	329,266	297,737	627,003
PETALUMA	576,316	378,777	244,610	505,901	7,500	1,713,103	1,575,255	3,288,359
ROHNERT PARK	424,540	279,024	181,455	372,669	6,000	1,263,688	1,160,404	2,424,092
SANTA ROSA	1,719,005	1,129,796	720,094	1,508,976	10,000	5,087,872	4,698,594	9,786,466
SEBASTOPOL	72,468	47,629	34,955	63,614	2,000	220,665	198,079	418,744
SONOMA	103,746	68,186	47,970	91,070	3,000	313,972	283,571	597,543
WINDSOR	252,545	165,982	109,886	221,689	6,000	756,103	690,287	1,446,389
STANISLAUS COUNTY								
CERES	483,859	318,011	191,431	424,741	7,500	1,425,542	1,322,543	2,748,085
HUGHSON	76,841	50,503	34,439	67,453	2,000	231,236	210,032	441,269
MODESTO	2,116,968	1,391,353	821,344	1,858,315	10,000	6,197,980	5,786,354	11,984,335
NEWMAN	119,342	78,436	50,832	104,760	3,000	356,370	326,199	682,569
OAKDALE	223,781	147,078	91,116	196,439	5,000	663,414	611,666	1,275,080
PATTERSON	249,183	163,773	100,913	218,738	6,000	738,607	681,098	1,419,705
RIVERBANK	251,322	165,178	101,738	220,615	6,000	744,853	686,943	1,431,796
TURLOCK	695,676	457,225	273,132	610,678	7,500	2,044,212	1,901,507	3,945,719
WATERFORD	88,324	58,050	38,868	77,532	2,000	264,774	241,417	506,191
SUTTER COUNTY								
LIVE OAK	93,034	61,146	38,992	81,667	2,000	276,839	254,293	531,132
YUBA CITY	678,665	446,045	254,223	595,745	7,500	1,982,177	1,855,009	3,837,186
TEHAMA COUNTY								
CORNING	79,645	52,345	34,111	69,914	2,000	238,015	217,694	455,709
RED BLUFF	142,644	93,751	57,296	125,215	3,000	421,906	389,891	811,797
TEHAMA	4,181	2,748	6,339	3,670	1,000	17,937	11,427	29,364
TRINITY COUNTY								

Local Streets and Roads - Projected FY2025-26 Revenues

Based on State Dept of Finance statewide revenue projections

Estimated May 2026

	Highway Users Tax Acct (HUTA) ⁽¹⁾ Streets & Highways Code					TOTAL HUTA	Road Mntnc Rehab Acct	TOTAL
	Sec2103 ⁽³⁾	Sec2105 ⁽³⁾	Sec2106 ⁽³⁾	Sec2107 ⁽³⁾	Sec2107.5 ⁽⁴⁾			
TULARE COUNTY								
DINUBA	250,696	164,767	94,256	220,065	6,000	735,784	685,231	1,421,015
EXETER	99,700	65,527	40,376	87,519	3,000	296,122	272,513	568,635
FARMERSVILLE	100,105	65,793	40,521	87,874	3,000	297,292	273,619	570,911
LINDSAY	122,578	80,563	48,540	107,602	3,000	362,283	335,046	697,329
PORTERVILLE	612,863	402,797	223,489	537,983	7,500	1,784,631	1,675,150	3,459,782
TULARE	703,219	462,182	255,732	617,299	7,500	2,045,932	1,922,123	3,968,055
VISALIA	1,415,820	930,531	510,011	1,242,834	10,000	4,109,197	3,869,892	7,979,089
WOODLAKE	77,111	50,680	32,316	67,690	2,000	229,797	210,770	440,566
TUOLUMNE COUNTY								
SONORA	50,120	32,941	32,706	43,996	2,000	161,763	136,994	298,757
VENTURA COUNTY								
CAMARILLO	681,747	448,070	290,295	598,451	7,500	2,026,064	1,863,434	3,889,498
FILLMORE	164,096	107,850	73,518	144,047	4,000	493,511	448,527	942,038
MOORPARK	348,903	229,312	150,910	306,273	6,000	1,041,398	953,663	1,995,061
OJAI	74,058	48,673	35,813	65,009	2,000	225,553	202,423	427,976
OXNARD	1,942,941	1,276,975	818,445	1,705,551	10,000	5,753,912	5,310,681	11,064,593
PORT HUENEME	212,549	139,696	93,809	186,580	5,000	637,634	580,966	1,218,600
SAN BUENAVENTURA	1,060,387	696,927	448,858	930,828	10,000	3,146,999	2,898,377	6,045,376
SANTA PAULA	304,957	200,430	132,507	267,698	6,000	911,592	833,547	1,745,139
SIMI VALLEY	1,215,659	798,978	513,882	1,067,129	10,000	3,605,647	3,322,786	6,928,433
THOUSAND OAKS	1,221,699	802,947	516,411	1,072,430	10,000	3,623,487	3,339,295	6,962,782
YOLO COUNTY								
DAVIS	630,211	414,199	279,556	553,212	7,500	1,884,678	1,722,570	3,607,248
WEST SACRAMENTO	533,690	350,762	237,475	468,483	7,500	1,597,910	1,458,746	3,056,656
WINTERS	77,265	50,782	38,486	67,825	2,000	236,358	211,191	447,548
WOODLAND	593,607	390,141	263,597	521,079	7,500	1,775,924	1,622,517	3,398,441
YUBA COUNTY								
MARYSVILLE	126,778	83,324	44,515	111,288	3,000	368,905	346,526	715,430
WHEATLAND	38,647	25,400	16,907	33,925	1,000	115,879	105,635	221,514
Statewide Total	\$ 322,149,500	\$ 211,729,000	\$ 126,248,226	\$ 289,493,592	\$ 2,724,000	\$ 952,344,318	\$ 880,538,000	\$ 1,832,882,318

Notes:

1. The Highway Users Tax is also known as the "Motor Vehicle Fuel Tax", the "Gasoline Excise Tax" and "Article XIX Revenues."
2. Rolling Hills has no public streets and is therefore not eligible for HUTA or RMRA allocations.
3. Str&HwysCode §§ 2103, 2105, 2106, 2107 and RMRA amounts are paid monthly. Includes special payments for snow removal.
4. Str&HwysCode § 2107.5 amounts are typically paid by the State Controller once per year in July.

Local Streets and Roads - Projected FY2026-27 Revenues

Based on State Dept of Finance statewide revenue projections

Estimated May 2026

	Highway Users Tax Acct (HUTA) ⁽¹⁾ Streets & Highways Code					TOTAL HUTA	Road Mntnc Rehab Acct	TOTAL
	Sec2103 ⁽³⁾	Sec2105 ⁽³⁾	Sec2106 ⁽³⁾	Sec2107 ⁽³⁾	Sec2107.5 ⁽⁴⁾			
ALAMEDA COUNTY								
ALAMEDA	782,182	511,240	287,824	683,295	7,500	2,272,041	2,223,327	4,495,368
ALBANY	209,562	136,971	80,628	183,068	5,000	615,229	595,673	1,210,901
BERKELEY	1,270,457	830,379	464,501	1,109,840	10,000	3,685,177	3,611,232	7,296,410
DUBLIN	739,332	483,232	272,319	645,861	7,500	2,148,244	2,101,525	4,249,769
EMERYVILLE	133,343	87,154	53,049	116,485	3,000	393,031	379,024	772,055
FREMONT	2,302,588	1,504,986	837,966	2,011,483	10,000	6,667,023	6,545,028	13,212,051
HAYWARD	1,623,647	1,061,226	592,299	1,418,377	10,000	4,705,550	4,615,162	9,320,712
LIVERMORE	868,725	567,805	319,139	758,897	7,500	2,522,065	2,469,322	4,991,387
NEWARK	483,900	316,280	179,894	422,723	6,000	1,408,797	1,375,469	2,784,266
OAKLAND	4,287,531	2,802,359	1,556,197	3,745,479	10,000	12,401,566	12,187,163	24,588,729
PIEDMONT	111,537	72,901	45,158	97,436	3,000	330,032	317,039	647,071
PLEASANTON	789,943	516,312	290,632	690,074	7,500	2,294,461	2,245,386	4,539,847
SAN LEANDRO	900,015	588,255	330,461	786,230	7,500	2,612,460	2,558,261	5,170,721
UNION CITY	693,808	453,478	255,847	606,093	7,500	2,016,726	1,972,126	3,988,853
ALPINE COUNTY								
AMADOR COUNTY								
AMADOR	1,980	1,294	5,742	1,729	1,000	11,745	5,627	17,372
IONE	89,453	58,467	47,349	78,144	2,000	275,413	254,267	529,680
JACKSON	49,800	32,549	28,487	43,504	2,000	156,340	141,554	297,893
PLYMOUTH	11,106	7,259	10,083	9,702	1,000	39,150	31,569	70,719
SUTTER CREEK	26,172	17,106	17,249	22,863	1,000	84,389	74,392	158,782
BUTTE COUNTY								
BIGGS	19,530	12,765	12,416	17,061	1,000	62,771	55,513	118,284
CHICO	1,126,919	736,561	444,266	984,448	10,000	3,302,194	3,203,228	6,505,422
GRIDLEY	72,517	47,397	33,079	63,349	2,000	218,342	206,126	424,468
OROVILLE	198,060	129,453	82,038	173,020	4,000	586,571	562,978	1,149,549
PARADISE	109,755	71,737	47,601	95,879	3,000	327,972	311,975	639,947
CALAVERAS COUNTY								
ANGELS CAMP	36,149	23,628	30,273	31,579	1,000	122,629	102,754	225,383
COLUSA COUNTY								
COLUSA	64,697	42,286	21,937	56,518	2,000	187,437	183,899	371,336
WILLIAMS	55,323	36,159	19,454	48,329	2,000	161,265	157,254	318,519

Local Streets and Roads - Projected FY2026-27 Revenues

Based on State Dept of Finance statewide revenue projections

Estimated May 2026

	Highway Users Tax Acct (HUTA) ⁽¹⁾ Streets & Highways Code					TOTAL HUTA	Road Mntnc Rehab Acct	TOTAL
	Sec2103 ⁽³⁾	Sec2105 ⁽³⁾	Sec2106 ⁽³⁾	Sec2107 ⁽³⁾	Sec2107.5 ⁽⁴⁾			
CONTRA COSTA COUNTY								
ANTIOCH	1,155,961	755,544	451,814	1,009,818	10,000	3,383,137	3,285,780	6,668,917
BRENTWOOD	650,799	425,367	256,466	568,522	7,500	1,908,653	1,849,874	3,758,528
CLAYTON	109,517	71,581	47,151	95,672	3,000	326,921	311,300	638,221
CONCORD	1,242,464	812,083	485,265	1,085,386	10,000	3,635,198	3,531,663	7,166,861
DANVILLE	432,239	282,515	171,948	377,593	6,000	1,270,296	1,228,626	2,498,922
EL CERRITO	257,154	168,078	104,242	224,643	6,000	760,117	730,952	1,491,069
HERCULES	259,589	169,669	105,184	226,771	6,000	767,213	737,873	1,505,086
LAFAYETTE	251,670	164,493	102,122	219,853	6,000	744,138	715,364	1,459,503
MARTINEZ	371,581	242,868	148,492	324,604	6,000	1,093,545	1,056,207	2,149,752
MORAGA	171,274	111,946	71,032	149,621	4,000	507,874	486,842	994,715
OAKLEY	463,509	302,952	184,040	404,910	6,000	1,361,411	1,317,508	2,678,920
ORINDA	193,229	126,296	79,522	168,800	4,000	571,848	549,248	1,121,096
PINOLE	187,429	122,505	77,279	163,733	4,000	554,946	532,760	1,087,706
PITTSBURG	755,991	494,121	297,144	660,415	7,500	2,215,170	2,148,878	4,364,049
PLEASANT HILL	341,618	223,284	136,905	298,429	6,000	1,006,236	971,038	1,977,275
RICHMOND	1,147,240	749,844	448,442	1,002,200	10,000	3,357,726	3,260,992	6,618,718
SAN PABLO	318,782	208,358	128,074	278,480	6,000	939,695	906,128	1,845,823
SAN RAMON	837,406	547,334	328,628	731,537	7,500	2,452,405	2,380,299	4,832,704
WALNUT CREEK	695,926	454,862	273,917	607,944	7,500	2,040,150	1,978,148	4,018,297
DEL NORTE COUNTY								
CRESCENT CITY	66,637	43,554	24,839	58,212	2,000	195,242	189,413	384,656
EL DORADO COUNTY								
PLACERVILLE	107,102	70,003	72,099	93,562	3,000	345,766	304,434	650,200
SOUTH LAKE TAHOE	212,066	138,608	138,055	1,985,541	5,000	2,479,270	602,791	3,082,061

Local Streets and Roads - Projected FY2026-27 Revenues

Based on State Dept of Finance statewide revenue projections

Estimated May 2026

	Highway Users Tax Acct (HUTA) ⁽¹⁾ Streets & Highways Code					TOTAL HUTA	Road Mntnc Rehab Acct	TOTAL
	Sec2103 ⁽³⁾	Sec2105 ⁽³⁾	Sec2106 ⁽³⁾	Sec2107 ⁽³⁾	Sec2107.5 ⁽⁴⁾			
FRESNO COUNTY								
CLOVIS	1,278,109	835,380	426,837	1,116,524	10,000	3,666,850	3,632,982	7,299,832
COALINGA	178,550	116,701	63,758	155,977	4,000	518,986	507,522	1,026,507
FIREBAUGH	86,256	56,377	33,282	75,351	2,000	253,266	245,179	498,446
FOWLER	75,892	49,604	29,860	66,297	2,000	223,653	215,721	439,374
FRESNO	5,513,802	3,603,857	1,825,480	4,816,718	20,000	15,779,857	15,672,795	31,452,652
HURON	68,617	44,848	27,458	59,942	2,000	202,864	195,041	397,905
KERMAN	173,571	113,447	62,114	151,627	4,000	504,759	493,369	998,128
KINGSBURG	131,502	85,951	48,223	114,877	3,000	383,552	373,790	757,342
MENDOTA	125,810	82,231	46,343	109,905	3,000	367,289	357,612	724,901
ORANGE COVE	96,184	62,867	36,560	84,024	2,000	281,635	273,400	555,035
PARLIER	145,004	94,775	52,681	126,672	3,000	422,131	412,168	834,299
REEDLEY	263,331	172,115	91,753	230,039	6,000	763,238	748,509	1,511,746
SANGER	267,627	174,923	93,171	233,792	6,000	775,513	760,720	1,536,233
SAN JOAQUIN	36,605	23,925	16,887	31,977	1,000	110,394	104,048	214,442
SELMA	244,623	159,887	85,575	213,696	5,000	708,781	695,331	1,404,112
GLENN COUNTY								
ORLAND	86,157	56,313	31,359	75,264	2,000	251,093	244,898	495,991
WILLOWS	64,093	41,892	24,557	55,990	2,000	188,532	182,182	370,714
HUMBOLDT COUNTY								
ARCATA	188,082	122,932	82,814	164,304	4,000	562,131	534,617	1,096,748
BLUE LAKE	11,928	7,796	9,747	10,420	1,000	40,891	33,904	74,795
EUREKA	266,983	174,502	115,541	233,230	6,000	796,256	758,891	1,555,147
FERNDALE	13,799	9,019	10,523	12,054	1,000	46,395	39,222	85,617
FORTUNA	124,029	81,066	56,245	108,348	3,000	372,688	352,547	725,236
RIO DELL	33,556	21,932	18,719	29,314	1,000	104,521	95,382	199,903
TRINIDAD	3,039	1,986	6,060	2,655	1,000	14,740	8,638	23,378
IMPERIAL COUNTY								
BRAWLEY	286,582	187,312	112,094	250,351	6,000	842,339	814,601	1,656,940
CALEXICO	396,664	259,262	153,307	346,516	6,000	1,161,749	1,127,504	2,289,253
CALIPATRIA	64,677	42,273	29,014	56,500	2,000	194,465	183,842	378,307
EL CENTRO	455,402	297,654	175,298	397,828	6,000	1,332,181	1,294,465	2,626,646
HOLTVILLE	56,273	36,781	25,868	49,159	2,000	170,081	159,955	330,035
IMPERIAL	226,340	147,937	89,539	197,725	5,000	666,542	643,364	1,309,905
WESTMORLAND	20,629	13,483	12,523	18,021	1,000	65,655	58,636	124,291
INYO COUNTY								
BISHOP	38,159	24,941	20,304	33,335	1,000	117,738	108,465	226,203

Local Streets and Roads - Projected FY2026-27 Revenues

Based on State Dept of Finance statewide revenue projections

Estimated May 2026

	Highway Users Tax Acct (HUTA) ⁽¹⁾ Streets & Highways Code					TOTAL HUTA	Road Mntnc Rehab Acct	TOTAL
	Sec2103 ⁽³⁾	Sec2105 ⁽³⁾	Sec2106 ⁽³⁾	Sec2107 ⁽³⁾	Sec2107.5 ⁽⁴⁾			
KERN COUNTY								
ARVIN	197,882	129,337	59,503	172,864	4,000	563,586	562,472	1,126,058
BAKERSFIELD	4,149,843	2,712,364	1,151,998	3,625,198	10,000	11,649,403	11,795,788	23,445,191
CALIFORNIA CITY	148,656	97,163	45,895	129,862	4,000	425,576	422,550	848,127
DELANO	522,950	341,803	149,366	456,836	7,500	1,478,455	1,486,467	2,964,921
MARICOPA	10,156	6,638	7,608	8,872	1,000	34,273	28,868	63,141
MCFARLAND	140,688	91,955	43,692	122,901	3,000	402,236	399,901	802,137
RIDGECREST	280,980	183,650	82,475	245,457	6,000	798,562	798,676	1,597,238
SHAFTER	232,170	151,748	68,982	202,818	5,000	660,718	659,936	1,320,654
TAFT	84,840	55,452	28,254	74,114	2,000	244,661	241,156	485,816
TEHACHAPI	129,087	84,372	40,485	112,767	3,000	369,711	366,925	736,636
WASCO	268,379	175,414	78,992	234,449	6,000	763,234	762,858	1,526,092
KINGS COUNTY								
AVENAL	135,551	88,597	48,234	118,414	3,000	393,795	385,298	779,093
CORCORAN	214,066	139,915	73,393	187,002	5,000	619,376	608,475	1,227,851
HANFORD	606,167	396,194	199,033	529,532	7,500	1,738,426	1,723,008	3,461,434
LEMOORE	274,110	179,160	92,633	239,456	6,000	791,359	779,149	1,570,508
LAKE COUNTY								
CLEARLAKE	166,988	109,145	62,630	145,877	4,000	488,640	474,659	963,299
LAKEPORT	49,750	32,517	22,029	43,460	2,000	149,756	141,413	291,169
LASSEN COUNTY								
SUSANVILLE	160,683	105,023	49,974	165,094	4,000	484,774	456,736	941,510
LOS ANGELES COUNTY								
AGOURA HILLS	200,267	130,896	78,154	174,948	5,000	589,265	569,253	1,158,518
ALHAMBRA	817,827	534,537	304,353	714,433	7,500	2,378,650	2,324,646	4,703,296
ARCADIA	562,999	367,980	211,015	491,822	7,500	1,641,316	1,600,306	3,241,621
ARTESIA	162,306	106,084	64,249	141,787	4,000	478,427	461,350	939,777
AVALON	34,081	22,275	17,283	29,772	1,000	104,411	96,873	201,284
AZUSA	497,392	325,098	186,984	434,509	7,500	1,451,483	1,413,819	2,865,302
BALDWIN PARK	713,051	466,055	265,976	622,903	7,500	2,075,485	2,026,823	4,102,308
BELL	337,877	220,838	128,557	295,161	6,000	988,433	960,403	1,948,836
BELLFLOWER	780,559	510,178	290,703	681,877	7,500	2,270,817	2,218,713	4,489,529
BELL GARDENS	390,903	255,497	147,980	341,483	6,000	1,141,863	1,111,129	2,252,992
BEVERLY HILLS	323,672	211,554	123,354	282,752	6,000	947,333	920,027	1,867,360
BRADBURY	9,107	5,952	8,136	7,955	1,000	32,150	25,885	58,035
BURBANK	1,060,836	693,369	393,362	926,720	10,000	3,084,287	3,015,391	6,099,678
CALABASAS	229,894	150,260	89,005	200,829	5,000	674,988	653,465	1,328,452
CARSON	928,631	606,959	344,938	811,229	7,500	2,699,258	2,639,603	5,338,861
CERRITOS	488,602	319,353	183,765	426,830	6,000	1,424,550	1,388,834	2,813,383

Local Streets and Roads - Projected FY2026-27 Revenues

Based on State Dept of Finance statewide revenue projections

Estimated May 2026

	Highway Users Tax Acct (HUTA) ⁽¹⁾ Streets & Highways Code					TOTAL HUTA	Road Mntnc Rehab Acct	TOTAL
	Sec2103 ⁽³⁾	Sec2105 ⁽³⁾	Sec2106 ⁽³⁾	Sec2107 ⁽³⁾	Sec2107.5 ⁽⁴⁾			
CLAREMONT	379,450	248,011	143,785	331,478	6,000	1,108,725	1,078,575	2,187,300
COMMERCE	122,494	80,063	49,667	107,008	3,000	362,233	348,186	710,419
COMPTON	951,160	621,685	353,190	830,910	7,500	2,764,445	2,703,641	5,468,086
COVINA	507,795	331,898	190,795	443,597	7,500	1,481,585	1,443,390	2,924,975
CUDAHY	225,419	147,336	87,366	196,921	5,000	662,042	640,747	1,302,789
CULVER CITY	400,247	261,604	151,402	349,646	6,000	1,168,900	1,137,690	2,306,589
DIAMOND BAR	543,974	355,545	204,046	475,202	7,500	1,586,268	1,546,228	3,132,496
DOWNEY	1,127,621	737,021	417,824	985,062	10,000	3,277,528	3,205,226	6,482,754
DUARTE	235,051	153,631	90,894	205,334	5,000	689,910	668,124	1,358,033
EL MONTE	1,080,405	706,160	400,530	943,815	10,000	3,140,911	3,071,016	6,211,927
EL SEGUNDO	171,373	112,011	67,571	149,707	4,000	504,662	487,123	991,785
GARDENA	602,870	394,040	225,619	526,652	7,500	1,756,682	1,713,639	3,470,320
GLENDALE	1,939,103	1,267,411	715,053	1,693,952	10,000	5,625,520	5,511,836	11,137,356
GLEN DORA	519,713	339,688	195,160	454,008	7,500	1,516,068	1,477,266	2,993,334
HAWAIIAN GARDENS	138,045	90,227	55,363	120,593	3,000	407,228	392,388	799,616
HAWTHORNE	870,982	569,280	323,823	760,868	7,500	2,532,452	2,475,737	5,008,190
HERMOSA BEACH	195,100	127,519	76,261	170,435	4,000	573,315	554,566	1,127,880
HIDDEN HILLS	17,283	11,296	11,130	15,098	1,000	55,807	49,126	104,933
HUNTINGTON PARK	541,589	353,986	203,173	473,118	7,500	1,579,365	1,539,447	3,118,812
INDUSTRY	4,266	2,788	6,363	3,727	1,000	18,144	12,127	30,271
INGLEWOOD	1,074,100	702,039	398,221	938,307	10,000	3,122,666	3,053,093	6,175,760
IRVINDALE	14,937	9,763	10,271	13,048	1,000	49,019	42,458	91,477
LA CANADA FLINTRIDGE	203,326	132,895	79,274	177,620	5,000	598,115	577,947	1,176,062
LA HABRA HEIGHTS	55,966	36,580	25,299	48,891	2,000	168,736	159,082	327,819
LAKEWOOD	814,580	532,415	303,164	711,597	7,500	2,369,256	2,315,417	4,684,673
LA MIRADA	488,087	319,017	183,576	426,380	6,000	1,423,060	1,387,371	2,810,431
LANCASTER	1,759,643	1,150,114	649,321	1,537,180	10,000	5,106,258	5,001,726	10,107,984
LA PUENTE	376,224	245,902	142,603	328,659	6,000	1,099,388	1,069,403	2,168,791
LA VERNE	321,010	209,814	122,379	280,426	6,000	939,628	912,459	1,852,087
LAWNDALE	314,556	205,596	120,015	274,788	6,000	920,955	894,114	1,815,068
LOMITA	207,186	135,418	80,688	180,993	5,000	609,285	588,920	1,198,205
LONG BEACH	4,595,732	3,003,801	1,688,121	4,014,716	10,000	13,312,370	13,063,214	26,375,583
LOS ANGELES	38,589,800	25,222,547	14,139,442	33,711,079	20,000	111,682,868	109,690,208	221,373,077
LYNWOOD	678,564	443,514	253,344	592,777	7,500	1,975,700	1,928,797	3,904,496
MALIBU	106,271	69,459	43,725	92,835	3,000	315,290	302,071	617,361
MANHATTAN BEACH	351,022	229,430	133,372	306,644	6,000	1,026,468	997,768	2,024,236
MAYWOOD	248,730	162,572	95,905	217,285	6,000	730,492	707,008	1,437,500
MONROVIA	385,251	251,803	145,909	336,546	6,000	1,125,509	1,095,063	2,220,572
MONTEBELLO	620,955	405,860	232,243	542,451	7,500	1,809,009	1,765,044	3,574,052

Local Streets and Roads - Projected FY2026-27 Revenues

Based on State Dept of Finance statewide revenue projections

Estimated May 2026

	Highway Users Tax Acct (HUTA) ⁽¹⁾ Streets & Highways Code					TOTAL HUTA	Road Mntnc Rehab Acct	TOTAL
	Sec2103 ⁽³⁾	Sec2105 ⁽³⁾	Sec2106 ⁽³⁾	Sec2107 ⁽³⁾	Sec2107.5 ⁽⁴⁾			
MONTEREY PARK	604,672	395,218	226,279	528,226	7,500	1,761,894	1,718,759	3,480,654
NORWALK	1,023,647	669,063	379,741	894,232	10,000	2,976,683	2,909,683	5,886,366
PALMDALE	1,675,634	1,095,205	618,550	1,463,792	10,000	4,863,181	4,762,934	9,626,115
PALOS VERDES ESTATES	132,165	86,384	53,209	115,456	3,000	390,215	375,675	765,890
PARAMOUNT	529,245	345,918	198,651	462,335	7,500	1,543,650	1,504,361	3,048,011
PASADENA	1,392,041	909,847	514,676	1,216,052	10,000	4,042,616	3,956,830	7,999,446
PICO RIVERA	615,016	401,978	230,068	537,262	7,500	1,791,824	1,748,162	3,539,986
POMONA	1,514,892	990,143	559,673	1,323,371	10,000	4,398,080	4,306,029	8,704,109
RANCHO PALOS VERDES	417,807	273,082	157,834	364,986	6,000	1,219,709	1,187,603	2,407,312
REDONDO BEACH	695,085	454,312	259,395	607,209	7,500	2,023,501	1,975,756	3,999,258
ROLLING HILLS ⁽²⁾								
ROLLING HILLS ESTATES	84,583	55,284	35,781	73,890	2,000	251,538	240,424	491,962
ROSEMEAD	505,706	330,533	190,030	441,772	7,500	1,475,541	1,437,453	2,912,995
SAN DIMAS	344,489	225,160	130,979	300,937	6,000	1,007,565	979,198	1,986,763
SAN FERNANDO	234,516	153,281	90,698	204,867	5,000	688,363	666,604	1,354,967
SAN GABRIEL	390,517	255,245	147,838	341,146	6,000	1,140,746	1,110,032	2,250,777
SAN MARINO	124,207	81,182	50,294	108,504	3,000	367,188	353,054	720,241
SANTA CLARITA	2,300,192	1,503,421	847,313	2,009,390	10,000	6,670,316	6,538,219	13,208,534
SANTA FE SPRINGS	185,776	121,424	72,846	162,289	4,000	546,335	528,061	1,074,396
SANTA MONICA	923,286	603,466	342,980	806,559	7,500	2,683,792	2,624,409	5,308,201
SIERRA MADRE	110,626	72,306	45,320	96,640	3,000	327,892	314,451	642,343
SIGNAL HILL	116,397	76,078	47,434	101,681	3,000	344,590	330,854	675,444
SOUTH EL MONTE	193,378	126,393	75,630	168,930	4,000	568,331	549,670	1,118,001
SOUTH GATE	920,118	601,395	341,820	803,792	7,500	2,674,627	2,615,406	5,290,032
SOUTH PASADENA	266,825	174,399	102,532	233,092	6,000	782,847	758,441	1,541,288
TEMPLE CITY	361,712	236,418	137,288	315,983	6,000	1,057,400	1,028,155	2,085,555
TORRANCE	1,453,303	949,888	537,115	1,269,569	10,000	4,219,875	4,130,965	8,350,841
VERNON	2,089	1,365	5,565	1,825	1,000	11,843	5,937	17,780
WALNUT	281,415	183,935	107,877	245,837	6,000	825,064	799,914	1,624,978
WEST COVINA	1,084,632	708,923	402,078	947,507	10,000	3,153,140	3,083,030	6,236,171
WEST HOLLYWOOD	353,249	230,886	134,188	308,589	6,000	1,032,912	1,004,099	2,037,011
WESTLAKE VILLAGE	80,624	52,696	34,331	70,431	2,000	240,081	229,170	469,251
WHITTIER	869,586	568,367	323,311	759,649	7,500	2,528,414	2,471,770	5,000,184

Local Streets and Roads - Projected FY2026-27 Revenues

Based on State Dept of Finance statewide revenue projections

Estimated May 2026

	Highway Users Tax Acct (HUTA) ⁽¹⁾ Streets & Highways Code					TOTAL HUTA	Road Mntnc Rehab Acct	TOTAL
	Sec2103 ⁽³⁾	Sec2105 ⁽³⁾	Sec2106 ⁽³⁾	Sec2107 ⁽³⁾	Sec2107.5 ⁽⁴⁾			
MADERA COUNTY								
CHOWCHILLA	190,745	124,672	52,790	166,630	4,000	538,836	542,186	1,081,022
MADERA	657,688	429,869	170,269	574,540	7,500	1,839,867	1,869,457	3,709,324
MARIN COUNTY								
BELVEDERE	21,024	13,742	13,428	18,366	1,000	67,561	59,761	127,322
CORTE MADERA	101,074	66,063	46,279	88,296	3,000	304,712	287,299	592,011
FAIRFAX	75,179	49,138	35,653	65,675	2,000	227,645	213,695	441,339
LARKSPUR	129,473	84,624	57,934	113,104	3,000	388,135	368,022	756,158
MILL VALLEY	139,876	91,424	62,203	122,192	3,000	418,696	397,593	816,289
NOVATO	526,266	343,971	220,773	459,732	7,500	1,558,241	1,495,892	3,054,133
ROSS	23,123	15,113	14,289	20,200	1,000	73,725	65,726	139,452
SAN ANSELMO	126,553	82,716	56,736	110,553	3,000	379,557	359,722	739,280
SAN RAFAEL	609,720	398,517	255,021	532,636	7,500	1,803,395	1,733,109	3,536,504
SAUSALITO	70,468	46,058	33,719	61,559	2,000	213,804	200,302	414,106
TIBURON	90,403	59,088	41,900	78,974	2,000	272,366	256,968	529,334
MARIPOSA COUNTY								
MENDOCINO COUNTY								
FORT BRAGG	71,141	46,498	33,641	62,147	2,000	215,426	202,215	417,642
POINT ARENA	4,553	2,976	6,646	3,978	1,000	19,153	12,943	32,096
UKIAH	164,336	107,411	71,422	143,559	4,000	490,728	467,118	957,846
WILLITS	48,968	32,006	24,652	42,777	1,000	149,403	139,190	288,593
MERCED COUNTY								
ATWATER	315,387	206,139	96,286	275,514	6,000	899,326	896,477	1,795,804
DOS PALOS	57,362	37,492	21,439	50,110	2,000	168,403	163,050	331,453
GUSTINE	60,173	39,330	22,255	52,566	2,000	176,323	171,040	347,364
LIVINGSTON	142,945	93,430	46,265	124,873	3,000	410,512	406,316	816,828
LOS BANOS	483,999	316,345	145,196	422,809	6,000	1,374,348	1,375,750	2,750,099
MERCED	970,443	634,288	286,300	847,754	7,500	2,746,285	2,758,450	5,504,735
MODOC COUNTY								
ALTURAS	26,924	17,598	14,363	27,255	1,000	87,140	76,531	163,671
MONO COUNTY								
MAMMOTH LAKES	71,467	46,712	66,070	1,679,365	2,000	1,865,614	203,144	2,068,758

Local Streets and Roads - Projected FY2026-27 Revenues

Based on State Dept of Finance statewide revenue projections

Estimated May 2026

	Highway Users Tax Acct (HUTA) ⁽¹⁾ Streets & Highways Code					TOTAL HUTA	Road Mntnc Rehab Acct	TOTAL
	Sec2103 ⁽³⁾	Sec2105 ⁽³⁾	Sec2106 ⁽³⁾	Sec2107 ⁽³⁾	Sec2107.5 ⁽⁴⁾			
MONTEREY COUNTY								
CARMEL-BY-THE-SEA	31,359	20,496	13,731	27,394	1,000	93,980	89,136	183,115
DEL REY OAKS	15,630	10,216	9,251	13,654	1,000	49,751	44,427	94,178
GONZALES	84,613	55,303	28,898	73,916	2,000	244,729	240,509	485,238
GREENFIELD	205,741	134,474	63,395	179,730	5,000	588,340	584,812	1,173,152
KING CITY	141,985	92,802	45,237	124,034	3,000	407,058	403,586	810,645
MARINA	228,518	149,361	69,882	199,627	5,000	652,387	649,554	1,301,941
MONTEREY	281,851	184,220	85,071	246,218	6,000	803,360	801,152	1,604,511
PACIFIC GROVE	148,260	96,904	47,025	129,516	3,000	424,705	421,425	846,130
SALINAS	1,601,346	1,046,650	460,864	1,398,895	10,000	4,517,755	4,551,771	9,069,526
SAND CITY	3,692	2,413	5,852	3,225	1,000	16,182	10,495	26,677
SEASIDE	323,989	211,761	97,072	283,029	6,000	921,851	920,928	1,842,779
SOLEDAD	272,705	178,242	82,466	238,228	6,000	777,641	775,154	1,552,794
NAPA COUNTY								
AMERICAN CANYON	221,688	144,896	71,250	193,661	5,000	636,495	630,140	1,266,635
CALISTOGA	51,839	33,882	20,338	45,285	2,000	153,344	147,350	300,694
NAPA	771,294	504,123	235,993	673,783	7,500	2,192,693	2,192,377	4,385,070
SAINT HELENA	53,413	34,911	20,810	46,660	2,000	157,793	151,823	309,617
YOUNTVILLE	29,547	19,312	13,657	25,812	1,000	89,328	83,987	173,314
NEVADA COUNTY								
GRASS VALLEY	134,719	88,053	120,249	117,687	3,000	463,708	382,934	846,643
NEVADA CITY	33,140	21,661	33,200	42,951	1,000	131,951	94,200	226,152
TRUCKEE	167,562	109,520	148,394	2,492,448	4,000	2,921,925	476,291	3,398,215

Local Streets and Roads - Projected FY2026-27 Revenues

Based on State Dept of Finance statewide revenue projections

Estimated May 2026

	Highway Users Tax Acct (HUTA) ⁽¹⁾ Streets & Highways Code					TOTAL HUTA	Road Mntnc Rehab Acct	TOTAL
	Sec2103 ⁽³⁾	Sec2105 ⁽³⁾	Sec2106 ⁽³⁾	Sec2107 ⁽³⁾	Sec2107.5 ⁽⁴⁾			
ORANGE COUNTY								
ALISO VIEJO	512,685	335,094	218,595	447,869	7,500	1,521,743	1,457,289	2,979,032
ANAHEIM	3,428,447	2,240,856	1,434,502	2,995,005	10,000	10,108,810	9,745,246	19,854,056
BREA	474,140	309,901	202,522	414,197	6,000	1,406,759	1,347,727	2,754,486
BUENA PARK	833,566	544,824	352,406	728,182	7,500	2,466,478	2,369,382	4,835,860
COSTA MESA	1,113,575	727,840	469,174	972,791	10,000	3,293,381	3,165,301	6,458,682
CYPRESS	498,441	325,784	212,656	435,425	7,500	1,479,806	1,416,801	2,896,607
DANA POINT	328,028	214,401	141,591	286,557	6,000	976,577	932,407	1,908,984
FOUNTAIN VALLEY	565,464	369,591	240,605	493,975	7,500	1,677,134	1,607,312	3,284,446
FULLERTON	1,424,162	930,842	598,692	1,244,112	10,000	4,207,807	4,048,132	8,255,939
GARDEN GROVE	1,702,024	1,112,454	714,563	1,486,845	10,000	5,025,886	4,837,945	9,863,831
HUNTINGTON BEACH	1,963,127	1,283,113	823,447	1,714,939	10,000	5,794,625	5,580,123	11,374,748
IRVINE	3,153,961	2,061,449	1,320,038	2,755,221	10,000	9,300,669	8,965,027	18,265,696
LAGUNA BEACH	227,548	148,727	99,690	198,780	5,000	679,744	646,796	1,326,540
LAGUNA HILLS	310,507	202,950	134,285	271,251	6,000	924,993	882,606	1,807,599
LAGUNA NIGUEL	645,949	422,196	274,168	564,285	7,500	1,914,098	1,836,088	3,750,186
LAGUNA WOODS	175,640	114,799	78,044	153,434	4,000	525,917	499,250	1,025,167
LA HABRA	621,004	405,893	263,766	542,494	7,500	1,840,657	1,765,184	3,605,841
LAKE FOREST	867,498	567,002	366,557	757,824	7,500	2,566,381	2,465,833	5,032,214
LA PALMA	154,150	100,753	69,082	134,661	4,000	462,647	438,166	900,813
LOS ALAMITOS	118,842	77,676	54,358	103,817	3,000	357,693	337,804	695,497
MISSION VIEJO	926,503	605,568	391,162	809,370	7,500	2,740,104	2,633,554	5,373,657
NEWPORT BEACH	842,326	550,550	356,060	735,835	7,500	2,492,270	2,394,283	4,886,553
ORANGE	1,392,655	910,248	585,553	1,216,588	10,000	4,115,044	3,958,574	8,073,619
PLACENTIA	534,343	349,250	227,627	466,788	7,500	1,585,508	1,518,851	3,104,360
RANCHO SANTA MARGARITA	474,288	309,998	202,584	414,326	6,000	1,407,196	1,348,149	2,755,345
SAN CLEMENTE	634,526	414,730	269,405	554,306	7,500	1,880,467	1,803,618	3,684,085
SAN JUAN CAPISTRANO	349,705	228,570	150,631	305,494	6,000	1,040,400	994,026	2,034,426
SANTA ANA	3,121,256	2,040,073	1,306,400	2,726,651	10,000	9,204,380	8,872,065	18,076,445
SEAL BEACH	250,413	163,672	109,225	218,755	6,000	748,065	711,791	1,459,856
STANTON	401,405	262,361	172,191	350,658	6,000	1,192,615	1,140,981	2,333,597
TUSTIN	795,268	519,793	336,436	694,726	7,500	2,353,723	2,260,523	4,614,246
VILLA PARK	57,996	37,906	28,985	50,663	2,000	177,550	164,850	342,400
WESTMINSTER	900,114	588,320	380,158	786,317	7,500	2,662,408	2,558,542	5,220,950
YORBA LINDA	673,566	440,247	285,685	588,410	7,500	1,995,407	1,914,588	3,909,995

Local Streets and Roads - Projected FY2026-27 Revenues

Based on State Dept of Finance statewide revenue projections

Estimated May 2026

	Highway Users Tax Acct (HUTA) ⁽¹⁾ Streets & Highways Code					TOTAL HUTA	Road Mntnc Rehab Acct	TOTAL
	Sec2103 ⁽³⁾	Sec2105 ⁽³⁾	Sec2106 ⁽³⁾	Sec2107 ⁽³⁾	Sec2107.5 ⁽⁴⁾			
PLACER COUNTY								
AUBURN	136,273	89,069	60,205	119,045	3,000	407,592	387,352	794,944
COLFAX	19,787	12,933	12,845	17,286	1,000	63,851	56,244	120,095
LINCOLN	539,668	352,731	224,214	471,441	7,500	1,595,554	1,533,989	3,129,543
LOOMIS	67,379	44,040	32,195	58,861	2,000	204,474	191,523	395,998
ROCKLIN	724,296	473,404	299,279	632,727	7,500	2,137,206	2,058,786	4,195,992
ROSEVILLE	1,568,859	1,025,416	642,655	1,370,515	10,000	4,617,446	4,459,428	9,076,873
PLUMAS COUNTY								
PORTOLA	20,896	13,658	9,254	120,061	1,000	164,869	59,396	224,265
RIVERSIDE COUNTY								
BANNING	316,248	206,702	134,427	276,267	6,000	939,644	898,925	1,838,569
BEAUMONT	591,022	386,296	247,054	516,302	7,500	1,748,173	1,679,960	3,428,133
BLYTHE	185,875	121,489	80,988	162,375	4,000	554,727	528,343	1,083,070
CALIMESA	108,825	71,128	49,406	95,066	3,000	327,425	309,330	636,755
CANYON LAKE	109,478	71,555	49,674	95,637	3,000	329,344	311,187	640,531
CATHEDRAL CITY	511,269	334,169	214,364	446,632	7,500	1,513,934	1,453,266	2,967,200
COACHELLA	439,337	287,153	184,880	383,793	6,000	1,301,163	1,248,800	2,549,963
CORONA	1,575,421	1,029,706	650,549	1,376,248	10,000	4,641,925	4,478,082	9,120,007
DESERT HOT SPRINGS	329,245	215,197	139,754	287,620	6,000	977,816	935,868	1,913,685
EASTVALE	690,908	451,582	287,996	603,560	7,500	2,041,546	1,963,883	4,005,428
HEMET	910,012	594,790	377,805	794,964	7,500	2,685,070	2,586,679	5,271,749
INDIAN WELLS	48,127	31,456	24,527	42,042	1,000	147,152	136,798	283,950
INDIO	916,001	598,704	380,259	800,195	7,500	2,702,659	2,603,701	5,306,360
JURUPA VALLEY	1,048,532	685,328	434,583	915,971	10,000	3,094,414	2,980,417	6,074,831
LAKE ELSINORE	730,344	477,357	304,161	638,010	7,500	2,157,372	2,075,977	4,233,349
LA QUINTA	384,024	251,000	162,207	335,473	6,000	1,138,705	1,091,574	2,230,279
MENIFEE	1,141,460	746,066	472,673	997,150	10,000	3,367,348	3,244,561	6,611,909
MORENO VALLEY	2,086,839	1,363,972	860,174	1,823,010	10,000	6,143,995	5,931,770	12,075,765
MURRIETA	1,106,547	723,247	458,363	966,652	10,000	3,264,809	3,145,324	6,410,133
NORCO	263,578	172,276	112,838	230,255	6,000	784,948	749,212	1,534,160
PALM DESERT	514,526	336,298	215,699	449,477	7,500	1,523,499	1,462,523	2,986,022
PALM SPRINGS	440,247	287,749	185,253	384,589	6,000	1,303,838	1,251,388	2,555,226
PERRIS	804,157	525,602	334,416	702,491	7,500	2,374,167	2,285,789	4,659,956
RANCHO MIRAGE	169,463	110,762	74,261	148,039	4,000	506,525	481,693	988,217
RIVERSIDE	3,170,867	2,072,500	1,304,507	2,769,990	10,000	9,327,864	9,013,084	18,340,948
SAN JACINTO	544,321	355,771	227,912	475,505	7,500	1,611,008	1,547,213	3,158,221
TEMECULA	1,110,814	726,035	460,111	970,379	10,000	3,277,339	3,157,451	6,434,790
WILDOMAR	367,008	239,879	155,233	320,609	6,000	1,088,729	1,043,208	2,131,937

Local Streets and Roads - Projected FY2026-27 Revenues

Based on State Dept of Finance statewide revenue projections

Estimated May 2026

	Highway Users Tax Acct (HUTA) ⁽¹⁾ Streets & Highways Code					TOTAL HUTA	Road Mntnc Rehab Acct	TOTAL
	Sec2103 ⁽³⁾	Sec2105 ⁽³⁾	Sec2106 ⁽³⁾	Sec2107 ⁽³⁾	Sec2107.5 ⁽⁴⁾			
SACRAMENTO COUNTY								
CITRUS HEIGHTS	868,310	567,533	375,057	758,533	7,500	2,576,932	2,468,141	5,045,073
ELK GROVE	1,809,868	1,182,942	776,547	1,581,055	10,000	5,360,413	5,144,489	10,504,902
FOLSOM	916,377	598,950	395,553	800,524	7,500	2,718,903	2,604,770	5,323,674
GALT	258,273	168,809	114,930	225,620	6,000	773,632	734,131	1,507,763
ISLETON	7,869	5,143	8,156	6,874	1,000	29,043	22,368	51,411
RANCHO CORDOVA	845,840	552,846	365,475	738,904	7,500	2,510,566	2,404,271	4,914,837
SACRAMENTO	5,226,219	3,415,891	2,233,317	4,565,494	20,000	15,460,921	14,855,353	30,316,274
SAN BENITO COUNTY								
HOLLISTER	430,507	281,382	178,497	376,080	6,000	1,272,467	1,223,702	2,496,169
SAN JUAN BAUTISTA	20,629	13,483	13,123	18,021	1,000	66,255	58,636	124,891
SAN BERNARDINO COUNTY								
ADELANTO	367,731	240,351	150,820	321,240	6,000	1,086,142	1,045,262	2,131,404
APPLE VALLEY	751,467	491,164	303,196	656,463	7,500	2,209,790	2,136,020	4,345,810
BARSTOW	252,749	165,199	105,163	220,795	6,000	749,906	718,431	1,468,337
BIG BEAR LAKE	49,899	32,614	24,614	692,933	2,000	802,060	141,835	943,894
CHINO	942,400	615,959	379,013	823,257	7,500	2,768,129	2,678,740	5,446,869
CHINO HILLS	775,827	507,086	312,869	677,743	7,500	2,281,026	2,205,264	4,486,290
COLTON	532,116	347,794	216,095	464,843	7,500	1,568,348	1,512,521	3,080,868
FONTANA	2,169,482	1,417,988	866,268	1,895,205	10,000	6,358,943	6,166,680	12,525,622
GRAND TERRACE	129,928	84,922	56,392	113,502	3,000	387,745	369,317	757,061
HESPERIA	1,007,592	658,569	404,899	880,207	10,000	2,961,267	2,864,046	5,825,312
HIGHLAND	565,088	369,345	229,188	493,646	7,500	1,664,767	1,606,243	3,271,009
LOMA LINDA	250,651	163,827	104,330	218,962	6,000	743,769	712,466	1,456,236
MONTCLAIR	376,313	245,960	154,228	328,737	6,000	1,111,238	1,069,656	2,180,894
NEEDLES	48,740	31,857	24,154	42,578	1,000	148,330	138,543	286,873
ONTARIO	1,825,330	1,193,047	729,610	1,594,562	10,000	5,352,550	5,188,438	10,540,988
RANCHO CUCAMONGA	1,742,063	1,138,624	696,547	1,521,823	10,000	5,109,056	4,951,756	10,060,812
REDLANDS	727,424	475,449	293,649	635,459	7,500	2,139,480	2,067,677	4,207,158
RIALTO	1,044,939	682,979	419,729	912,832	10,000	3,070,480	2,970,204	6,040,684
SAN BERNARDINO	2,208,561	1,443,530	881,786	1,929,344	10,000	6,473,221	6,277,762	12,750,983
TWENTYNINE PALMS	279,901	182,945	115,944	244,514	6,000	829,305	795,609	1,624,914
UPLAND	783,370	512,016	315,864	684,332	7,500	2,303,083	2,226,703	4,529,786
VICTORVILLE	1,395,822	912,319	559,060	1,219,355	10,000	4,096,556	3,967,578	8,064,134
YUCAIPA	542,816	354,788	220,344	474,190	7,500	1,599,638	1,542,936	3,142,574
YUCCA VALLEY	218,035	142,509	91,378	190,470	5,000	647,393	619,757	1,267,150

Local Streets and Roads - Projected FY2026-27 Revenues

Based on State Dept of Finance statewide revenue projections

Estimated May 2026

	Highway Users Tax Acct (HUTA) ⁽¹⁾ Streets & Highways Code					TOTAL HUTA	Road Mntnc Rehab Acct	TOTAL
	Sec2103 ⁽³⁾	Sec2105 ⁽³⁾	Sec2106 ⁽³⁾	Sec2107 ⁽³⁾	Sec2107.5 ⁽⁴⁾			
SAN DIEGO COUNTY								
CARLSBAD	1,151,873	752,872	488,109	1,006,247	10,000	3,409,100	3,274,160	6,683,260
CHULA VISTA	2,785,458	1,820,594	1,173,536	2,433,306	10,000	8,222,894	7,917,571	16,140,465
CORONADO	232,655	152,065	102,419	203,242	5,000	695,381	661,315	1,356,695
DEL MAR	39,109	25,562	21,210	34,165	1,000	121,045	111,166	232,212
EL CAJON	1,052,422	687,870	446,381	919,370	10,000	3,116,043	2,991,475	6,107,518
ENCINITAS	613,274	400,840	262,120	535,740	7,500	1,819,474	1,743,210	3,562,684
ESCONDIDO	1,497,540	978,802	633,145	1,308,213	10,000	4,427,700	4,256,706	8,684,406
IMPERIAL BEACH	263,073	171,947	115,182	229,814	6,000	786,016	747,777	1,533,793
LA MESA	602,900	394,059	257,768	526,678	7,500	1,788,906	1,713,723	3,502,629
LEMON GROVE	278,772	182,208	121,769	243,529	6,000	832,277	792,401	1,624,679
NATIONAL CITY	583,667	381,489	249,698	509,877	7,500	1,732,231	1,659,054	3,391,285
OCEANSIDE	1,725,711	1,127,936	728,882	1,507,538	10,000	5,100,067	4,905,275	10,005,342
POWAY	498,678	325,939	214,038	435,633	7,500	1,481,789	1,417,476	2,899,265
SAN DIEGO	13,946,414	9,115,468	5,856,506	12,183,237	20,000	41,121,625	39,642,213	80,763,838
SAN MARCOS	961,376	628,361	408,179	839,833	7,500	2,845,249	2,732,678	5,577,927
SANTEE	590,487	385,946	252,560	515,835	7,500	1,752,328	1,678,440	3,430,768
SOLANA BEACH	128,542	84,016	58,734	112,291	3,000	386,584	365,377	751,962
VISTA	1,005,681	657,320	426,769	878,538	7,500	2,975,808	2,858,616	5,834,424
SAN FRANCISCO COUNTY								
SAN FRANCISCO	8,650,974	5,654,334	2,138,277	7,557,274	20,000	24,020,858	24,590,103	48,610,962
SAN JOAQUIN COUNTY								
ESCALON	73,685	48,161	34,210	64,369	2,000	222,425	209,446	431,871
LATHROP	382,044	249,706	157,286	333,744	6,000	1,128,780	1,085,947	2,214,727
LODI	664,123	434,075	269,873	580,161	7,500	1,955,731	1,887,746	3,843,476
MANTECA	927,820	606,429	375,122	810,520	7,500	2,727,391	2,637,296	5,364,686
MOUNTAIN HOUSE	285,028	186,296	118,564	248,994	5,000	843,882	810,184	1,654,066
RIPON	158,258	103,438	67,966	138,250	4,000	471,912	449,842	921,754
STOCKTON	3,176,213	2,075,993	1,272,528	2,774,659	10,000	9,309,394	9,028,278	18,337,671
TRACY	972,185	635,426	392,830	849,276	7,500	2,857,217	2,763,402	5,620,620
SAN LUIS OBISPO COUNTY								
ARROYO GRANDE	181,608	118,700	93,132	158,649	4,000	556,090	516,216	1,072,306
ATASCADERO	304,875	199,268	153,088	266,331	6,000	929,562	866,597	1,796,159
EL PASO DE ROBLES	310,646	203,040	155,895	271,372	6,000	946,953	883,000	1,829,953
GROVER BEACH	126,592	82,742	66,373	110,588	3,000	389,295	359,835	749,130
MORRO BAY	104,499	68,301	55,627	91,288	3,000	322,715	297,034	619,749
PISMO BEACH	79,723	52,107	43,576	69,644	2,000	247,050	226,609	473,660
SAN LUIS OBISPO	490,314	320,473	243,284	428,326	6,000	1,488,396	1,393,701	2,882,098

Local Streets and Roads - Projected FY2026-27 Revenues

Based on State Dept of Finance statewide revenue projections

Estimated May 2026

	Highway Users Tax Acct (HUTA) ⁽¹⁾ Streets & Highways Code					TOTAL HUTA	Road Mntnc Rehab Acct	TOTAL
	Sec2103 ⁽³⁾	Sec2105 ⁽³⁾	Sec2106 ⁽³⁾	Sec2107 ⁽³⁾	Sec2107.5 ⁽⁴⁾			
SAN MATEO COUNTY								
ATHERTON	71,091	46,466	34,515	62,104	2,000	216,176	202,075	418,251
BELMONT	279,198	182,486	121,502	243,900	6,000	833,086	793,611	1,626,698
BRISBANE	48,018	31,385	24,871	41,947	1,000	147,221	136,489	283,710
BURLINGAME	312,319	204,134	135,346	272,834	6,000	930,632	887,755	1,818,387
COLMA	14,670	9,588	10,932	12,815	1,000	49,005	41,698	90,703
DALY CITY	1,037,723	678,263	438,558	906,529	10,000	3,071,072	2,949,693	6,020,764
EAST PALO ALTO	297,293	194,312	129,065	259,707	6,000	886,378	845,044	1,731,422
FOSTER CITY	333,442	217,940	144,175	291,287	6,000	992,844	947,798	1,940,642
HALF MOON BAY	116,318	76,026	53,420	101,612	3,000	350,376	330,629	681,005
HILLSBOROUGH	112,576	73,580	51,856	98,344	3,000	339,356	319,994	659,349
MENLO PARK	337,986	220,910	146,075	295,256	6,000	1,006,225	960,712	1,966,938
MILLBRAE	230,844	150,881	101,290	201,659	5,000	689,674	656,166	1,345,840
PACIFICA	382,826	250,218	164,817	334,427	6,000	1,138,288	1,088,170	2,226,458
PORTOLA VALLEY	43,920	28,706	23,158	38,367	1,000	135,151	124,841	259,992
REDWOOD CITY	826,072	539,926	350,090	721,636	7,500	2,445,225	2,348,083	4,793,308
SAN BRUNO	435,545	284,675	186,854	380,482	6,000	1,293,556	1,238,023	2,531,580
SAN CARLOS	304,261	198,867	131,978	265,795	6,000	906,901	864,852	1,771,754
SAN MATEO	1,046,444	683,962	442,203	914,147	10,000	3,096,756	2,974,481	6,071,236
SOUTH SAN FRANCISCO	655,857	428,673	278,942	572,940	7,500	1,943,912	1,864,252	3,808,164
WOODSIDE	52,532	34,335	26,758	45,890	2,000	161,514	149,319	310,833
SANTA BARBARA COUNTY								
BUELLTON	50,918	33,280	21,768	44,481	2,000	152,447	144,733	297,180
CARPINTERIA	130,077	85,019	48,147	113,632	3,000	379,875	369,739	749,613
GOLETA	324,147	211,865	112,820	283,167	6,000	938,000	921,378	1,859,378
GUADALUPE	87,612	57,264	33,996	76,536	2,000	257,408	249,034	506,442
LOMPOC	440,930	288,195	151,738	385,186	6,000	1,272,049	1,253,330	2,525,378
SANTA BARBARA	865,211	565,508	293,127	755,827	7,500	2,487,173	2,459,334	4,946,507
SANTA MARIA	1,110,695	725,958	374,933	970,275	10,000	3,191,861	3,157,113	6,348,974
SOLVANG	57,550	37,615	23,978	50,274	2,000	171,418	163,584	335,002

Local Streets and Roads - Projected FY2026-27 Revenues

Based on State Dept of Finance statewide revenue projections

Estimated May 2026

	Highway Users Tax Acct (HUTA) ⁽¹⁾ Streets & Highways Code					TOTAL HUTA	Road Mntnc Rehab Acct	TOTAL
	Sec2103 ⁽³⁾	Sec2105 ⁽³⁾	Sec2106 ⁽³⁾	Sec2107 ⁽³⁾	Sec2107.5 ⁽⁴⁾			
SANTA CLARA COUNTY								
CAMPBELL	432,833	282,903	173,635	378,112	6,000	1,273,483	1,230,314	2,503,798
CUPERTINO	597,258	390,372	237,772	521,749	7,500	1,754,651	1,697,685	3,452,337
GILROY	615,738	402,451	244,981	537,894	7,500	1,808,564	1,750,216	3,558,780
LOS ALTOS	313,982	205,220	127,275	274,286	6,000	926,763	892,482	1,819,245
LOS ALTOS HILLS	84,613	55,303	37,805	73,916	2,000	253,636	240,509	494,145
LOS GATOS	331,057	216,381	133,935	289,203	6,000	976,575	941,017	1,917,592
MILPITAS	810,839	529,969	321,084	708,328	7,500	2,377,720	2,304,781	4,682,501
MONTE SERENO	36,001	23,530	18,843	31,450	1,000	110,824	102,332	213,155
MORGAN HILL	461,262	301,484	184,724	402,947	6,000	1,356,417	1,311,121	2,667,538
MOUNTAIN VIEW	856,352	559,717	338,837	748,088	7,500	2,510,494	2,434,152	4,944,646
PALO ALTO	680,960	445,080	270,422	594,869	7,500	1,998,831	1,935,606	3,934,437
SAN JOSE	10,021,793	6,550,310	3,913,998	8,754,786	20,000	29,260,887	28,486,609	57,747,496
SANTA CLARA	1,332,214	870,744	524,456	1,163,789	10,000	3,901,204	3,786,774	7,687,978
SARATOGA	307,943	201,274	124,919	269,012	6,000	909,148	875,319	1,784,467
SUNNYVALE	1,580,529	1,033,044	621,316	1,380,710	10,000	4,625,600	4,492,600	9,118,200
SANTA CRUZ COUNTY								
CAPITOLA	97,590	63,785	40,086	85,252	2,000	288,712	277,395	566,108
SANTA CRUZ	640,386	418,560	236,345	559,425	7,500	1,862,216	1,820,275	3,682,491
SCOTTS VALLEY	119,465	78,083	47,995	104,362	3,000	352,906	339,576	692,483
WATSONVILLE	512,833	335,191	190,226	447,998	7,500	1,493,749	1,457,711	2,951,460
SHASTA COUNTY								
ANDERSON	110,577	72,274	60,530	96,597	3,000	342,977	314,310	657,287
REDDING	927,948	606,513	472,479	810,632	7,500	2,825,072	2,637,661	5,462,733
SHASTA LAKE	102,371	66,910	56,394	89,428	3,000	318,103	290,985	609,088
SIERRA COUNTY								
LOYALTON	7,305	4,775	6,452	6,382	1,000	25,914	20,765	46,678
SISKIYOU COUNTY								
DORRIS	8,493	5,551	8,866	7,419	1,000	31,330	24,141	55,471
DUNSMUIR	16,857	11,018	12,871	50,546	1,000	92,292	47,916	140,209
ETNA	6,771	4,425	8,042	5,915	1,000	26,152	19,245	45,398
FORT JONES	6,870	4,490	8,089	6,001	1,000	26,450	19,527	45,976
MONTAGUE	12,165	7,951	10,625	11,127	1,000	42,869	34,579	77,448
MOUNT SHASTA	32,081	20,968	20,161	69,828	1,000	144,038	91,190	235,228
TULELAKE	8,909	5,823	9,065	7,782	1,000	32,579	25,323	57,902
WEED	28,894	18,885	18,634	79,626	1,000	147,039	82,130	229,169
YREKA	77,991	50,975	42,142	83,342	2,000	256,449	221,686	478,135

Local Streets and Roads - Projected FY2026-27 Revenues

Based on State Dept of Finance statewide revenue projections

Estimated May 2026

	Highway Users Tax Acct (HUTA) ⁽¹⁾ Streets & Highways Code					TOTAL HUTA	Road Mntnc Rehab Acct	TOTAL
	Sec2103 ⁽³⁾	Sec2105 ⁽³⁾	Sec2106 ⁽³⁾	Sec2107 ⁽³⁾	Sec2107.5 ⁽⁴⁾			
SOLANO COUNTY								
BENICIA	268,072	175,214	114,216	234,181	6,000	797,683	761,986	1,559,669
DIXON	199,693	130,521	86,306	174,447	4,000	594,967	567,621	1,162,588
FAIRFIELD	1,194,951	781,028	492,529	1,043,879	10,000	3,522,388	3,396,609	6,918,997
RIO VISTA	102,331	66,884	46,567	89,394	3,000	308,176	290,873	599,049
SUISUN CITY	291,551	190,560	123,799	254,692	6,000	866,603	828,725	1,695,328
VACAVILLE	1,021,341	667,555	421,669	892,218	10,000	3,012,782	2,903,127	5,915,910
VALLEJO	1,246,582	814,774	513,603	1,088,983	10,000	3,673,942	3,543,368	7,217,309
SONOMA COUNTY								
CLOVERDALE	89,176	58,286	41,716	77,902	2,000	269,080	253,480	522,559
COTATI	75,041	49,047	35,865	65,554	2,000	227,506	213,301	440,807
HEALDSBURG	111,933	73,160	51,137	97,782	3,000	337,011	318,165	655,176
PETALUMA	592,210	387,072	249,957	517,339	7,500	1,754,078	1,683,336	3,437,414
ROHNERT PARK	436,248	285,135	185,394	381,096	6,000	1,293,872	1,240,021	2,533,893
SANTA ROSA	1,766,414	1,154,540	736,042	1,543,094	10,000	5,210,089	5,020,971	10,231,061
SEBASTOPOL	74,467	48,672	35,627	65,052	2,000	225,818	211,669	437,487
SONOMA	106,607	69,679	48,932	93,129	3,000	321,348	303,027	624,375
WINDSOR	259,510	169,617	112,229	226,701	6,000	774,058	737,648	1,511,706
STANISLAUS COUNTY								
CERES	497,203	324,975	195,592	434,344	7,500	1,459,616	1,413,284	2,872,900
HUGHSON	78,961	51,609	35,100	68,978	2,000	236,647	224,443	461,090
MODESTO	2,175,352	1,421,824	839,549	1,900,333	10,000	6,347,058	6,183,364	12,530,422
NEWMAN	122,633	80,154	51,858	107,129	3,000	364,774	348,580	713,354
OAKDALE	229,953	150,299	93,040	200,881	5,000	679,173	653,633	1,332,806
PATTERSON	256,055	167,359	103,056	223,684	6,000	756,155	727,829	1,483,983
RIVERBANK	258,253	168,796	103,899	225,603	6,000	762,551	734,075	1,496,626
TURLOCK	714,862	467,239	279,115	624,486	7,500	2,093,201	2,031,972	4,125,174
WATERFORD	90,760	59,321	39,627	79,285	2,000	270,993	257,981	528,975
SUTTER COUNTY								
LIVE OAK	95,600	62,485	39,754	83,514	2,000	283,353	271,740	555,093
YUBA CITY	697,382	455,813	259,783	609,215	7,500	2,029,693	1,982,284	4,011,977
TEHAMA COUNTY								
CORNING	81,841	53,492	34,765	71,494	2,000	243,592	232,631	476,223
RED BLUFF	146,578	95,804	58,467	128,046	3,000	431,895	416,642	848,537
TEHAMA	4,296	2,808	6,373	3,753	1,000	18,230	12,211	30,441
TRINITY COUNTY								

Local Streets and Roads - Projected FY2026-27 Revenues

Based on State Dept of Finance statewide revenue projections

Estimated May 2026

	Highway Users Tax Acct (HUTA) ⁽¹⁾ Streets & Highways Code					TOTAL HUTA	Road Mntnc Rehab Acct	TOTAL
	Sec2103 ⁽³⁾	Sec2105 ⁽³⁾	Sec2106 ⁽³⁾	Sec2107 ⁽³⁾	Sec2107.5 ⁽⁴⁾			
TULARE COUNTY								
DINUBA	257,609	168,375	96,251	225,041	6,000	753,276	732,246	1,485,523
EXETER	102,450	66,962	41,169	89,498	3,000	303,079	291,210	594,289
FARMERSVILLE	102,866	67,234	41,317	89,861	3,000	304,277	292,392	596,669
LINDSAY	125,959	82,328	49,515	110,035	3,000	370,836	358,034	728,870
PORTERVILLE	629,765	411,618	228,365	550,147	7,500	1,827,395	1,790,085	3,617,480
TULARE	722,613	472,305	261,326	631,256	7,500	2,095,000	2,054,003	4,149,003
VISALIA	1,454,867	950,911	521,275	1,270,935	10,000	4,207,988	4,135,411	8,343,398
WOODLAKE	79,238	51,790	32,929	69,220	2,000	235,177	225,231	460,408
TUOLUMNE COUNTY								
SONORA	51,502	33,662	33,328	44,991	2,000	165,484	146,393	311,877
VENTURA COUNTY								
CAMARILLO	700,549	457,884	296,660	611,982	7,500	2,074,575	1,991,287	4,065,862
FILLMORE	168,622	110,212	75,051	147,304	4,000	505,188	479,301	984,489
MOORPARK	358,525	234,334	154,167	313,198	6,000	1,066,225	1,019,095	2,085,320
OJAI	76,100	49,739	36,505	66,479	2,000	230,823	216,312	447,134
OXNARD	1,996,525	1,304,942	836,586	1,744,114	10,000	5,892,166	5,675,055	11,567,221
PORT HUENEME	218,411	142,755	95,794	190,799	5,000	652,758	620,826	1,273,585
SAN BUENAVENTURA	1,089,631	712,190	458,758	951,874	10,000	3,222,453	3,097,239	6,319,692
SANTA PAULA	313,368	204,819	135,354	273,750	6,000	933,292	890,738	1,824,029
SIMI VALLEY	1,249,185	816,476	525,231	1,091,257	10,000	3,692,150	3,550,767	7,242,917
THOUSAND OAKS	1,255,392	820,532	527,817	1,096,679	10,000	3,710,420	3,568,409	7,278,829
YOLO COUNTY								
DAVIS	647,592	423,270	285,682	565,720	7,500	1,929,764	1,840,758	3,770,522
WEST SACRAMENTO	548,409	358,443	242,663	479,076	7,500	1,636,091	1,558,833	3,194,924
WINTERS	79,396	51,894	39,237	69,358	2,000	241,885	225,681	467,566
WOODLAND	609,978	398,685	269,367	532,861	7,500	1,818,391	1,733,841	3,552,231
YUBA COUNTY								
MARYSVILLE	130,275	85,148	45,400	113,805	3,000	377,628	370,301	747,929
WHEATLAND	39,713	25,957	17,177	34,692	1,000	118,538	112,883	231,421
Statewide Total	\$ 331,034,000	\$ 216,366,000	\$ 129,008,813	\$ 295,887,592	\$ 2,724,000	\$ 975,020,405	\$ 940,953,000	\$ 1,915,973,405

Notes:

1. The Highway Users Tax is also known as the "Motor Vehicle Fuel Tax", the "Gasoline Excise Tax" and "Article XIX Revenues."
2. Rolling Hills has no public streets and is therefore not eligible for HUTA or RMRA allocations.
3. Str&HwysCode §§ 2103, 2105, 2106, 2107 and RMRA amounts are paid monthly. Includes special payments for snow removal.
4. Str&HwysCode § 2107.5 amounts are typically paid by the State Controller once per year in July.

Local Streets and Roads - Projected FY2025-26 Revenues

Based on State Dept of Finance statewide revenue projections
 Estimated May 2026

	Highway Users Tax Acct ⁽¹⁾				TOTAL HUTA	Road Maintnc Rehab Acct	TOTAL Annual
	Sec2103 ⁽²⁾	Sec2104	Sec2105	Sec2106			
ALAMEDA COUNTY	9,498,813	14,630,148	6,640,673	451,504	31,221,138	25,963,305	57,184,443
ALPINE COUNTY	183,597	289,524	136,638	20,796	630,555	501,830	1,132,385
AMADOR COUNTY	936,191	774,799	567,077	208,356	2,486,424	2,558,911	5,045,335
BUTTE COUNTY	3,082,824	2,612,735	1,867,352	427,498	7,990,409	8,426,347	16,416,755
CALAVERAS COUNTY	1,418,553	1,093,804	859,257	356,020	3,727,635	3,877,362	7,604,997
COLUSA COUNTY	1,091,531	611,576	661,171	122,255	2,486,533	2,983,506	5,470,038
CONTRA COSTA COUNTY	8,024,684	11,888,478	5,674,308	998,460	26,585,930	21,934,036	48,519,966
DEL NORTE COUNTY	558,490	343,922	338,293	117,935	1,358,641	1,526,534	2,885,175
EL DORADO COUNTY	2,992,531	3,828,217	2,079,097	893,626	9,793,471	8,179,547	17,973,018
FRESNO COUNTY	10,503,560	10,467,377	6,362,299	1,280,681	28,613,917	28,709,602	57,323,520
GLENN COUNTY	1,334,597	752,881	808,403	144,311	3,040,193	3,647,883	6,688,076
HUMBOLDT COUNTY	2,503,868	1,766,452	1,516,663	416,498	6,203,480	6,843,875	13,047,356
IMPERIAL COUNTY	4,731,252	2,558,122	2,865,851	472,592	10,627,817	12,932,031	23,559,848
INYO COUNTY	1,563,466	968,774	947,035	133,113	3,612,388	4,273,455	7,885,844
KERN COUNTY	9,632,107	9,275,360	5,834,436	1,969,503	26,711,406	26,327,642	53,039,048
KINGS COUNTY	2,031,287	1,641,078	1,230,407	248,102	5,150,873	5,552,158	10,703,031
LAKE COUNTY	1,389,882	1,055,384	841,890	348,533	3,635,689	3,798,993	7,434,683
LASSEN COUNTY	1,341,183	936,853	812,392	133,344	3,223,772	3,665,883	6,889,655
LOS ANGELES COUNTY	57,295,957	87,392,340	39,722,480	2,821,501	187,232,278	156,608,243	343,840,521
MADERA COUNTY	2,974,238	1,910,923	1,801,579	541,431	7,228,171	8,129,547	15,357,718
MARIN COUNTY	2,168,972	2,732,055	1,342,360	316,583	6,559,971	5,928,497	12,488,468
MARIPOSA COUNTY	890,159	539,195	539,194	139,570	2,108,118	2,433,090	4,541,208
MENDOCINO COUNTY	2,047,102	1,353,732	1,239,987	412,601	5,053,422	5,595,386	10,648,808
MERCED COUNTY	3,971,804	2,990,894	2,405,832	616,591	9,985,121	10,856,216	20,841,337
MODOC COUNTY	1,314,238	867,917	796,071	66,812	3,045,038	3,592,235	6,637,273
MONO COUNTY	963,752	777,715	583,771	31,899	2,357,137	2,634,244	4,991,381
MONTEREY COUNTY	4,410,789	4,706,683	2,671,738	942,503	12,731,712	12,056,102	24,787,815
NAPA COUNTY	1,513,120	1,660,240	916,539	330,890	4,420,788	4,135,843	8,556,631
NEVADA COUNTY	1,594,761	1,770,519	965,991	319,203	4,650,475	4,358,995	9,009,470
ORANGE COUNTY	20,686,199	33,272,904	15,019,158	837,150	69,815,412	56,542,022	126,357,434
PLACER COUNTY	4,533,539	6,535,859	3,283,626	921,595	15,274,619	12,391,617	27,666,236
PLUMAS COUNTY	1,076,524	1,048,190	652,081	159,663	2,936,458	2,942,487	5,878,945
RIVERSIDE COUNTY	18,242,978	25,529,879	12,063,028	1,866,500	57,702,385	49,863,915	107,566,300
SACRAMENTO COUNTY	12,600,595	16,181,501	8,142,445	2,310,830	39,235,371	34,441,471	73,676,842
SAN BENITO COUNTY	1,079,168	889,089	653,682	175,381	2,797,319	2,949,711	5,747,030
SAN BERNARDINO COUNTY	16,844,978	23,346,212	10,973,417	1,575,547	52,740,154	46,042,734	98,782,888
SAN DIEGO COUNTY	23,233,069	34,281,229	16,040,795	2,149,067	75,704,160	63,503,437	139,207,597
SAN FRANCISCO COUNTY	4,356,539	5,259,262	2,638,877	9,600	12,264,277	11,907,818	24,172,096
SAN JOAQUIN COUNTY	7,140,768	8,521,275	4,325,362	804,786	20,792,192	19,518,012	40,310,204
SAN LUIS OBISPO COUNTY	3,871,655	3,676,279	2,345,169	694,396	10,587,499	10,582,476	21,169,975
SAN MATEO COUNTY	5,188,058	7,898,049	3,615,516	313,160	17,014,783	14,180,627	31,195,410
SANTA BARBARA COUNTY	3,896,690	4,763,530	2,487,679	886,244	12,034,143	10,650,905	22,685,048
SANTA CLARA COUNTY	12,028,767	18,487,902	8,284,804	327,740	39,129,213	32,878,482	72,007,695
SANTA CRUZ COUNTY	2,494,500	2,963,462	1,602,282	675,486	7,735,731	6,818,270	14,554,001
SHASTA COUNTY	2,966,700	2,677,761	1,797,013	435,531	7,877,005	8,108,943	15,985,948
SIERRA COUNTY	527,392	434,367	319,456	36,226	1,317,441	1,441,531	2,758,972
SISKIYOU COUNTY	2,125,142	1,554,962	1,287,258	213,785	5,181,147	5,808,695	10,989,842
SOLANO COUNTY	3,661,429	4,847,765	2,226,273	208,331	10,943,798	10,007,860	20,951,659
SONOMA COUNTY	5,392,372	6,130,461	3,266,310	1,005,734	15,794,877	14,739,083	30,533,960
STANISLAUS COUNTY	5,546,714	6,078,002	3,359,799	763,472	15,747,987	15,160,949	30,908,936
SUTTER COUNTY	1,692,278	1,269,088	1,025,060	224,321	4,210,747	4,625,540	8,836,287
TEHAMA COUNTY	1,869,438	1,020,931	1,132,371	272,413	4,295,153	5,109,774	9,404,927
TRINITY COUNTY	985,519	695,802	596,956	95,212	2,373,489	2,693,739	5,067,228
TULARE COUNTY	6,705,210	5,122,094	4,061,533	800,591	16,689,428	18,327,492	35,016,920
TUOLUMNE COUNTY	1,312,354	1,112,507	794,930	348,690	3,568,480	3,587,085	7,155,566
VENTURA COUNTY	6,311,064	9,313,126	4,393,544	665,066	20,682,800	17,250,163	37,932,963
YOLO COUNTY	2,422,269	2,480,255	1,467,236	190,025	6,559,785	6,620,839	13,180,624
YUBA COUNTY	1,394,283	1,001,555	844,556	331,255	3,571,649	3,811,023	7,382,672
Total	\$ 322,149,500	\$ 408,591,000	\$ 211,729,000	\$ 34,580,508	\$ 977,050,007	\$ 880,538,000	\$ 1,857,588,007

Notes:

1. The Highway Users Tax is also known as the "Motor Vehicle Fuel Tax", the "Gasoline Excise Tax" and "Article XIX Revenues."

Local Streets and Roads - Projected FY2026-27 Revenues

Based on State Dept of Finance statewide revenue projections
 Estimated May 2026

	Highway Users Tax Acct ⁽¹⁾				TOTAL HUTA	Road Maintnc Rehab Acct	TOTAL Annual
	Sec2103 ⁽²⁾	Sec2104	Sec2105	Sec2106			
ALAMEDA COUNTY	9,760,779	14,962,673	6,789,056	461,357	31,973,865	27,744,685	59,718,550
ALPINE COUNTY	188,661	289,688	136,773	21,046	636,168	536,261	1,172,429
AMADOR COUNTY	962,010	790,909	579,295	212,787	2,545,002	2,734,482	5,279,483
BUTTE COUNTY	3,167,844	2,669,831	1,907,586	436,815	8,182,075	9,004,491	17,186,566
CALAVERAS COUNTY	1,457,675	1,115,052	877,771	363,744	3,814,242	4,143,393	7,957,635
COLUSA COUNTY	1,121,634	613,671	675,416	124,767	2,535,489	3,188,208	5,723,697
CONTRA COSTA COUNTY	8,245,995	12,157,642	5,800,507	1,020,507	27,224,650	23,438,963	50,663,613
DEL NORTE COUNTY	573,893	351,197	345,582	120,350	1,391,023	1,631,271	3,022,294
EL DORADO COUNTY	3,075,061	3,889,879	2,114,188	913,336	9,992,463	8,740,758	18,733,221
FRESNO COUNTY	10,793,236	10,700,402	6,499,379	1,309,020	29,302,037	30,679,410	59,981,446
GLENN COUNTY	1,371,404	755,505	825,820	147,314	3,100,044	3,898,170	6,998,214
HUMBOLDT COUNTY	2,572,922	1,804,478	1,549,340	425,570	6,352,310	7,313,444	13,665,753
IMPERIAL COUNTY	4,861,734	2,615,941	2,927,598	482,915	10,888,188	13,819,316	24,707,504
INYO COUNTY	1,606,585	970,812	967,440	135,867	3,680,703	4,566,663	8,247,366
KERN COUNTY	9,897,750	9,482,717	5,960,143	2,013,199	27,353,808	28,134,020	55,487,828
KINGS COUNTY	2,087,307	1,678,007	1,256,917	253,419	5,275,650	5,933,100	11,208,750
LAKE COUNTY	1,428,213	1,078,923	860,029	356,089	3,723,255	4,059,648	7,782,903
LASSEN COUNTY	1,378,171	939,316	829,895	136,103	3,283,485	3,917,404	7,200,890
LOS ANGELES COUNTY	58,876,111	89,376,668	40,609,627	2,884,192	191,746,598	167,353,364	359,099,962
MADERA COUNTY	3,056,264	1,953,378	1,840,395	553,289	7,403,326	8,687,327	16,090,653
MARIN COUNTY	2,228,790	2,793,406	1,371,908	323,427	6,717,532	6,335,260	13,052,792
MARIPOSA COUNTY	914,708	541,090	550,811	142,468	2,149,077	2,600,028	4,749,105
MENDOCINO COUNTY	2,103,558	1,383,197	1,266,703	421,586	5,175,044	5,979,294	11,154,338
MERCED COUNTY	4,081,342	3,058,572	2,457,668	630,123	10,227,705	11,601,077	21,828,782
MODOC COUNTY	1,350,483	868,889	813,223	68,087	3,100,682	3,838,704	6,939,386
MONO COUNTY	990,331	778,920	596,349	32,396	2,397,996	2,814,983	5,212,979
MONTEREY COUNTY	4,532,433	4,813,026	2,729,302	963,302	13,038,063	12,883,289	25,921,353
NAPA COUNTY	1,554,850	1,697,383	936,286	338,053	4,526,572	4,419,609	8,946,181
NEVADA COUNTY	1,638,743	1,804,225	986,804	326,106	4,755,878	4,658,072	9,413,950
ORANGE COUNTY	21,256,700	34,030,414	15,355,461	855,601	71,498,175	60,421,453	131,919,628
PLACER COUNTY	4,658,569	6,657,645	3,345,035	941,927	15,603,176	13,241,824	28,845,000
PLUMAS COUNTY	1,106,214	1,050,456	666,130	163,009	2,985,809	3,144,375	6,130,184
RIVERSIDE COUNTY	18,746,097	26,108,572	12,331,757	1,907,900	59,094,326	53,285,151	112,379,476
SACRAMENTO COUNTY	12,948,104	16,549,667	8,324,237	2,362,136	40,184,144	36,804,551	76,988,695
SAN BENITO COUNTY	1,108,930	908,765	667,766	179,077	2,864,537	3,152,095	6,016,633
SAN BERNARDINO COUNTY	17,309,543	23,857,146	11,209,845	1,610,460	53,986,994	49,201,793	103,188,787
SAN DIEGO COUNTY	23,873,810	35,059,089	16,398,572	2,196,766	77,528,238	67,860,500	145,388,738
SAN FRANCISCO COUNTY	4,476,687	5,378,499	2,695,733	9,600	12,560,519	12,724,831	25,285,350
SAN JOAQUIN COUNTY	7,337,702	8,714,938	4,418,555	822,515	21,293,710	20,857,171	42,150,881
SAN LUIS OBISPO COUNTY	3,978,431	3,758,888	2,395,698	709,663	10,842,679	11,308,555	22,151,235
SAN MATEO COUNTY	5,331,138	8,077,514	3,696,226	319,928	17,424,806	15,153,581	32,578,387
SANTA BARBARA COUNTY	4,004,156	4,870,717	2,542,592	905,789	12,323,254	11,381,680	23,704,934
SANTA CLARA COUNTY	12,360,506	18,908,585	8,470,201	334,833	40,074,126	35,134,323	75,208,449
SANTA CRUZ COUNTY	2,563,296	3,029,130	1,637,162	690,332	7,919,920	7,286,081	15,206,001
SHASTA COUNTY	3,048,518	2,734,228	1,835,731	445,027	8,063,504	8,665,310	16,728,813
SIERRA COUNTY	541,936	434,781	326,339	36,820	1,339,876	1,540,436	2,880,312
SISKIYOU COUNTY	2,183,751	1,559,308	1,314,993	218,337	5,276,389	6,207,238	11,483,627
SOLANO COUNTY	3,762,407	4,957,743	2,275,854	212,762	11,208,766	10,694,514	21,903,281
SONOMA COUNTY	5,541,087	6,268,494	3,336,685	1,027,943	16,174,209	15,750,353	31,924,562
STANISLAUS COUNTY	5,699,685	6,216,006	3,432,188	780,280	16,128,159	16,201,164	32,329,323
SUTTER COUNTY	1,738,949	1,297,543	1,047,146	229,108	4,312,746	4,942,905	9,255,651
TEHAMA COUNTY	1,920,995	1,025,995	1,156,768	278,273	4,382,031	5,460,363	9,842,394
TRINITY COUNTY	1,012,698	697,052	609,818	97,120	2,416,688	2,878,561	5,295,249
TULARE COUNTY	6,890,132	5,236,292	4,149,041	818,227	17,093,691	19,584,968	36,678,658
TUOLUMNE COUNTY	1,348,547	1,133,426	812,057	356,250	3,650,280	3,833,201	7,483,480
VENTURA COUNTY	6,485,115	9,523,410	4,491,001	679,679	21,179,206	18,433,722	39,612,928
YOLO COUNTY	2,489,072	2,536,301	1,498,848	194,048	6,718,269	7,075,104	13,793,373
YUBA COUNTY	1,432,736	1,022,996	862,753	338,426	3,656,910	4,072,503	7,729,413
Total	\$ 331,034,000	\$ 417,539,000	\$ 216,366,000	\$ 35,339,066	\$ 1,000,278,066	\$ 940,953,000	\$ 1,941,231,066

Notes:

1. The Highway Users Tax is also known as the "Motor Vehicle Fuel Tax", the "Gasoline Excise Tax" and "Article XIX Revenues."